

- NE cor. GLO 17
 (A) Set a 5/8" x 30" Iron Rod with an alum. cap. Set a 5" steel post 4' above grd. along side cor.
 A 9" D. Fir Bears S 12° W 25.4' scribed N.E. GL 17 BT
 An 8" Pine Bears S 26 1/2° E 30.2' scribed N.E. GL 17 BT
- SE cor. GLO 17
 (B) Set a 5/8" x 30" Iron Rod with a 2 1/2" alum. cap. Set a 5" steel fence post 4' above grd. along side cap
 A 7" D. Fir Bears S 23° E. 39.8' scribed S.W. GL 17 BT
 An 11" D. Fir Bears N 89 1/2° E 57.00' scribed S.W. GL 17 BT
- SW 1/4 cor. Sec 13
 (C) Set a 5/8" x 30" Iron Rod with 2 1/2" alum. cap.
 A 13" D. Fir Bears N 75° E 23.5' scribed S.W. 1/4 513 BT
 A 14" D. Fir Bears S 52 1/4° W 27.5' scribed S.W. 1/4 513 BT
- W. 1/4 cor. S 13-24
 (D) Set a 5/8" x 30" Iron Rod with an alum. cap.
 A 12" Maple Bears S 69° E 9.0' scribed E 1/4 524 BT
 A 12" D. Fir Bears N 40° E 21.6' scribed E 1/4 513 BT
- S.E. 1/4 cor. S 13-24
 (E) Set a 5/8" x 30" Iron Rod with an alum. cap.
 A 10" Cedar Bears N 36 1/5° E 30' scribed S.E. 1/4 513 BT
 A 14" Mem. Bears S 88 1/5° W 33.5' scribed S.E. 1/4 513 BT

LEGEND

- o - Corners Fd. as shown hereon
- - Corners Set
- () - Record Calls

NARRATIVE

PURPOSE: To Survey and set the corners of government Lots 14, 15 & 17.

A history of prior surveys which pertain to this survey, are as follows:

The North East boundary of Section 13 was surveyed by Addison Flint, Deputy U.S. Surveyor, March 1855. A resurvey of the East Boundary was done by Elmer Strickler, Deputy U.S. Surveyor in 1917, at which time the 1/4 corner for sec. 18 only was set. No mention of setting the 1/4 cor. for sec. 13 only. He also surveyed the remainder of the section. A dependent resurvey was done by Harold D. Corbins, U.S. Cadastral Surveyor, in 1958, of the East line and the S 1/4 corner for sec. 18 only was set. Still no mention of the 1/4 corner for Section 13 only.

The section was lotted by Strickler in 1917, into 16 lots. In 1954 Lot 13 was made to be two lots, Lots 17 & 18.

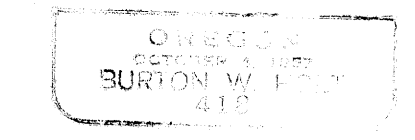
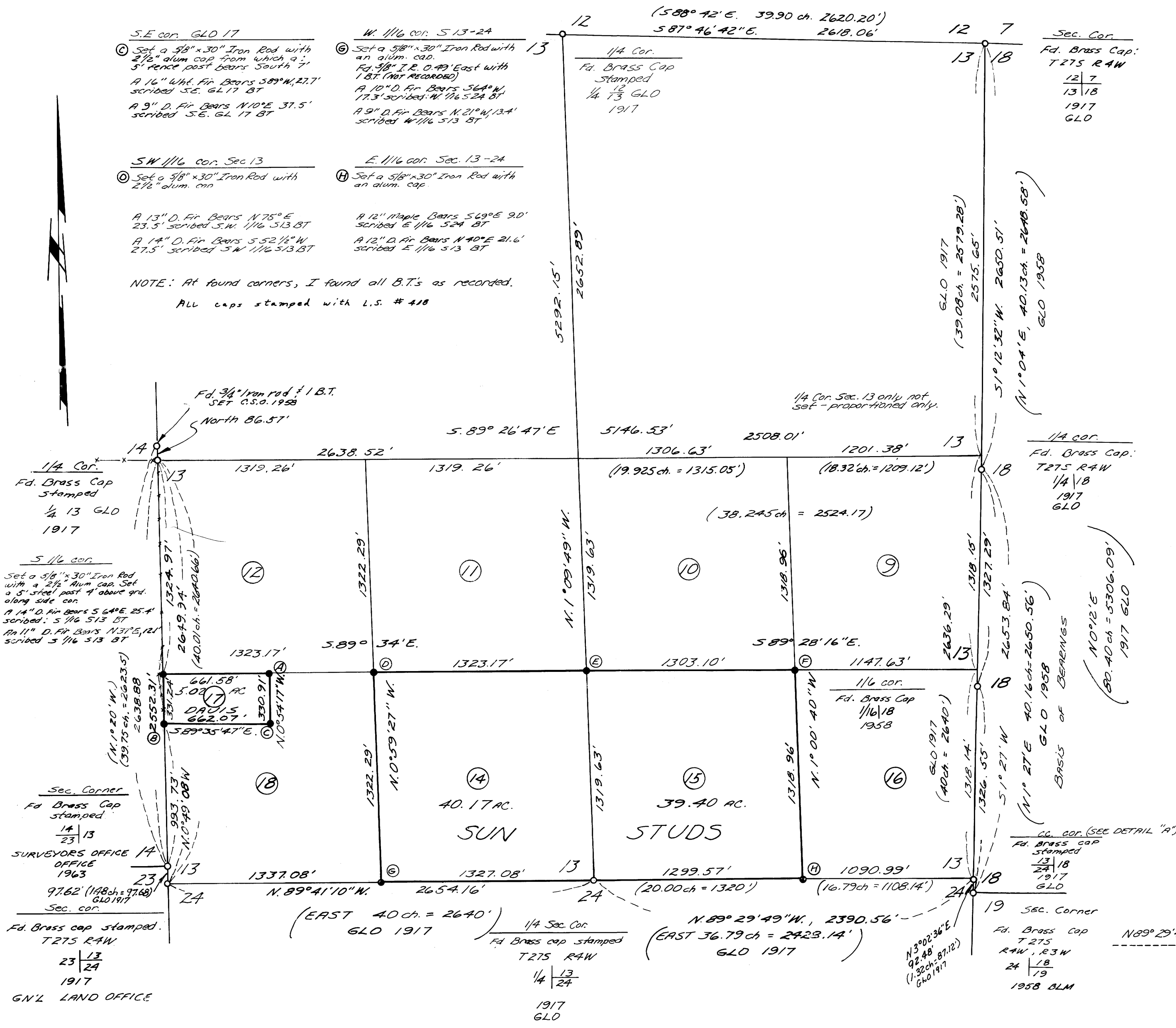
PROCEDURE:

This survey was accomplished by a closed random traverse. The basis of bearings used was the S 1/2 of the East line, GLO Survey 1958. I located and tied all the exterior corners needed for subdividing section 13 and setting the corners of government Lots 14, 15 and 17.

I proportioned the East 1/4 corner of Section 13 only (but did not set it) using the original calls which were used to subdivide the section into lots. (being the 1917 survey by Elmer Strickler.) The E 1/4 corner on the South line of the Section was proportioned using the C.C. being the South East corner of the Section. This was done according to B.L.M. procedures per Dan Barry, U.S. Cadastral Surveyor, Portland, Ore. Office.) The remainder of the section was subdivided and the corners set according to the Manual of Surveying Instructions of 1973.

The instruments used on this survey were a Lietz TM-6 and a Lietz Red-I S.D.M.

The error of closure was:
 Angular: 01.7 Seconds per angle
 Distance: 1/22031



REMAIN SURVEYORS FILE DATA DO NOT REMOVE FROM OFFICE

SUBDIVISION OF SECTION 13, T275, RAW, W.M.		
FOR SUN STUDS INC.	SCALE 1"=500'	DRAWN BY M.L.H.
BY: BURTON W. HOLT P.O. BOX 1127, ROSEBURG, OR. 97470		
DATE March, 1982	APPROVED BY	DRAWING

DETAIL "A" SCALE 1"=5'