

RECORD OF SURVEY  
for the  
U.S. FOREST SERVICE  
SEC. 8, T. 20S., R. 11W. W.M.  
DOUGLAS COUNTY, ORE.

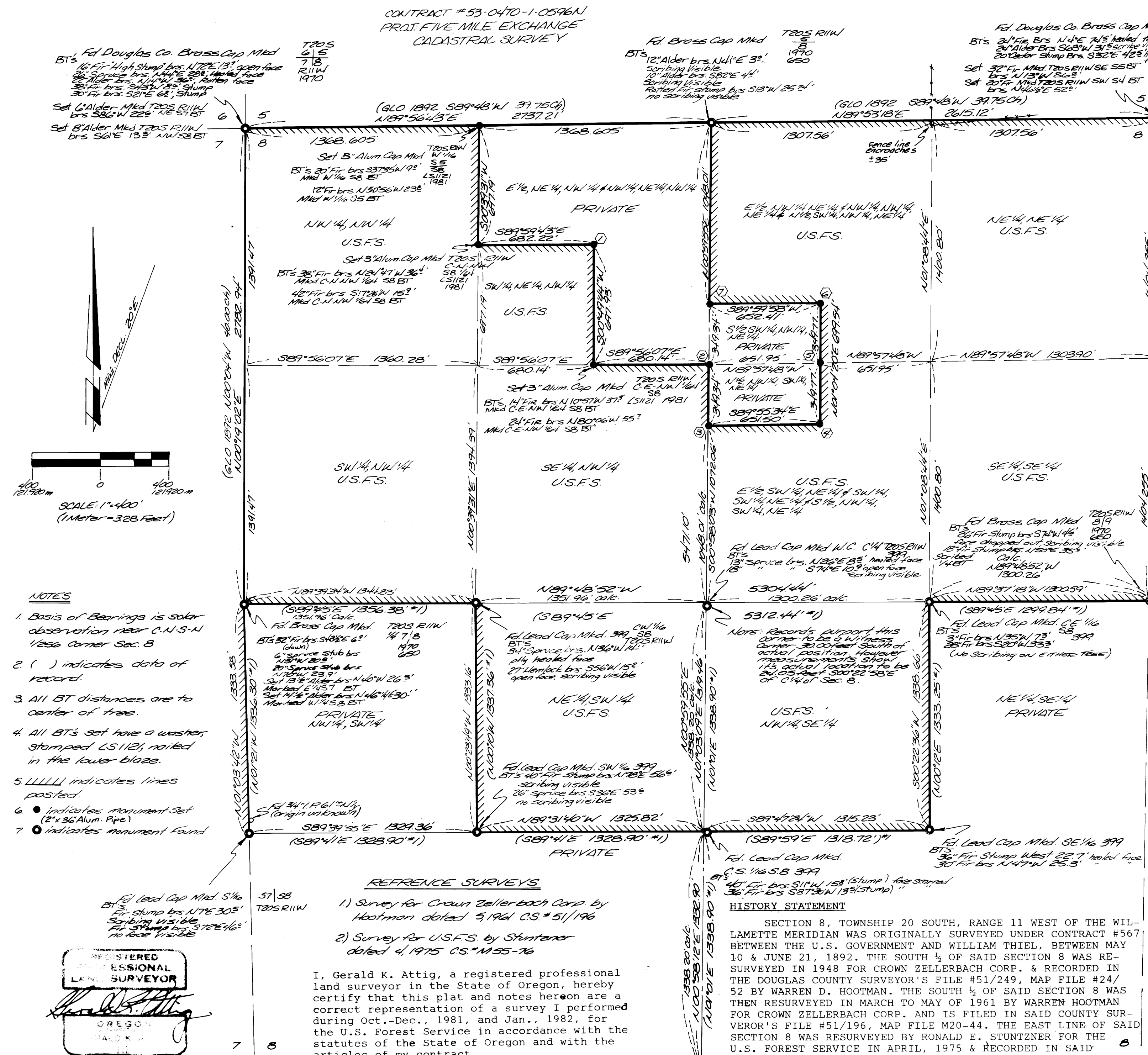
COUNTY SURVEYOR  
DOUGLAS COUNTY, ORE.  
28

NOV., 1981 - JAN., 1982

BY: ATTIG & ASSOC. INC.  
440 MADISON ST  
EUGENE, ORE.

- ① Set 3" Alum. Cap Mkd. T20S R11W 58 NE-NW 1/4 1981
- BT's 6" Alder Mkd. NE-NW 1/4 SB BT
- 4" Alder Mkd. X BT
- brs. 337'±0E 135'
- ② Set 3" Alum. Cap Mkd. T20S R11W 58 N 1/4 E 1981
- BT's 8" Alder Mkd. ON 1/4 SB BT
- brs. 368'±0E 49'
- ③ Set 3" Alum. Cap Mkd. T20S R11W 58 C.N.S.W. 1/4 1981
- BT's 24" Fir brs. N84°02'W 95'
- Mkd. C.N.S.W. 1/4 1981
- 17" Fir Mkd. ON 1/4 SB BT
- brs. N24°3' W 44'
- ④ Set 3" Alum. Cap Mkd. T20S R11W 58 C.N.S.W. 1/4 1981
- BT's 6" Alder brs. N84°02'W 95'
- Mkd. C.N.S.W. 1/4 1981
- 5" Fir brs. S2°35'W 65'
- Mkd. C.N.S.W. 1/4 1981
- ⑤ Set 3" Alum. Cap Mkd. T20S R11W 58 C.S.N.W. 1/4 1981
- BT's 6" Alder brs. N84°02'W 95'
- Mkd. C.S.N.W. 1/4 1981
- 7" Alder brs. S 1/4 E 302'
- Mkd. C.S.N.W. 1/4 1981
- ⑥ Set 3" Alum. Cap Mkd. T20S R11W 58 C.S.N.W. 1/4 1981
- BT's 6" Alder brs. N84°02'W 95'
- Mkd. C.S.N.W. 1/4 1981
- 20" Fir brs. N84°02'W 95'
- Mkd. C.S.N.W. 1/4 1981

NARRATIVE: This survey was performed between Oct., 1981, and Jan., 1982. The purpose of this survey is to delineate the ownership boundary of the property in Sec. 8, Twp. 20 South, Rng. 11 West, W.M., Douglas County, Oregon, that is a part of the Siuslaw Nat'l Forest. The survey was performed by Attig and Associates, Inc., under contract with the U.S. Forest Service. The method used to survey this tract was a random traverse run along existing roadways, where possible, tying to monuments shown hereon. The equipment utilized included a Tellurometer CD6 distance meter, a MAC-1H distance meter, a LIETZ T60D theodolite, a 300 foot and a 100 foot steel chain, plumb bobs, and assorted small tools commonly used for this type of project. Of the two larger loop traverses run on this proj., the larger loop closed at a rate of 1:12,000+, and the smaller 1:90,000+. The monuments held for subdividing the Northern portion of Sect. 8 are the N., S., E., & W. 1/4 corners, and the N.W. and the N.E. Section corners. All other corners were posted between as shown hereon, even though they are located in their correct position on the ground. The explanation for this being that the South 1/2 of Sec. 8 was surveyed and subdivided in May of 1961 by W.D. Hootman for Crown Zellerbach Corp., and while bearings and distances shown on that record of survey map do not match those found in the field, it was determined that said survey was performed using correct methods. Bearings hereon used are based on solar observation. The original field notes for this project are in the office of Attig and Associates, Inc., and a copy has been furnished to the Forest Service. For additional copies of these notes, contact Attig and Associates.



- NOTES
1. Basis of Bearings is solar observation near C.N.S.W. 1/4 corner Sec. 8
  2. ( ) indicates data of record.
  3. All BT distances are to center of tree.
  4. All BT's set have a washer, stamped LS1121, nailed in the lower blaze.
  5. LLLL indicates lines posted.
  6. ● indicates monument set (2" x 3/8" Alum. Pipe)
  7. ○ indicates monument found

REGISTERED PROFESSIONAL LAND SURVEYOR

Gerald K. Attig

OREGON

MAJOR

MAP FILE M-21-22

- REFERENCE SURVEYS
- 1) Survey for Crown Zellerbach Corp by Hootman dated 5/1961 C.S. # 51/196
  - 2) Survey for U.S.F.S. by Stuntzner dated 4/1975 C.S. # M55-76

I, Gerald K. Attig, a registered professional land surveyor in the State of Oregon, hereby certify that this plat and notes hereon are a correct representation of a survey I performed during Oct.-Dec., 1981, and Jan., 1982, for the U.S. Forest Service in accordance with the statutes of the State of Oregon and with the articles of my contract.

Gerald K. Attig (S) GERALD K. ATTIG  
REGISTERED LAND SURVEYOR  
OREGON LICENSE 1121  
WITNESSES: MONTE P. MONTEITH (SIT #553)  
LARRY D. MADDOX, TECH.

HISTORY STATEMENT

SECTION 8, TOWNSHIP 20 SOUTH, RANGE 11 WEST OF THE WILLAMETTE MERIDIAN WAS ORIGINALLY SURVEYED UNDER CONTRACT #567 BETWEEN THE U.S. GOVERNMENT AND WILLIAM THIEL, BETWEEN MAY 10 & JUNE 21, 1892. THE SOUTH 1/2 OF SAID SECTION 8 WAS RE-SURVEYED IN 1948 FOR CROWN ZELLERBACH CORP. & RECORDED IN THE DOUGLAS COUNTY SURVEYOR'S FILE #51/249, MAP FILE #24/52 BY WARREN D. HOOTMAN. THE SOUTH 1/2 OF SAID SECTION 8 WAS THEN RESURVEYED IN MARCH TO MAY OF 1961 BY WARREN HOOTMAN FOR CROWN ZELLERBACH CORP. AND IS FILED IN SAID COUNTY SURVEYOR'S FILE #51/196, MAP FILE M20-44. THE EAST LINE OF SAID SECTION 8 WAS RESURVEYED BY RONALD E. STUNTZNER FOR THE U.S. FOREST SERVICE IN APRIL, 1975 & RECORDED IN SAID

COUNTY SURVEYOR'S MAP FILE M55-76. THE N 1/4 CORNER, E 1/4 CORNER, & W 1/4 CORNER WERE RE-SET W/BASS CAPS IN 1970 BY TOM D. McCULLOUGH & THE NW, THE NE, & THE SOUTH 1/2 CORNERS WERE RE-SET IN 1969 & 1970 BY THE DOUGLAS COUNTY SURVEYOR.