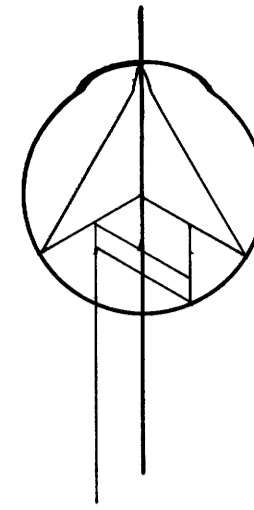


FILED *BS*
 RECEIVED *BS*
 FEB 18 1982
 COUNTY SURVEYOR
 DOUGLAS COUNTY, ORE.
BS



C.S. File No. 63/90
 MAP FILE M-91-18

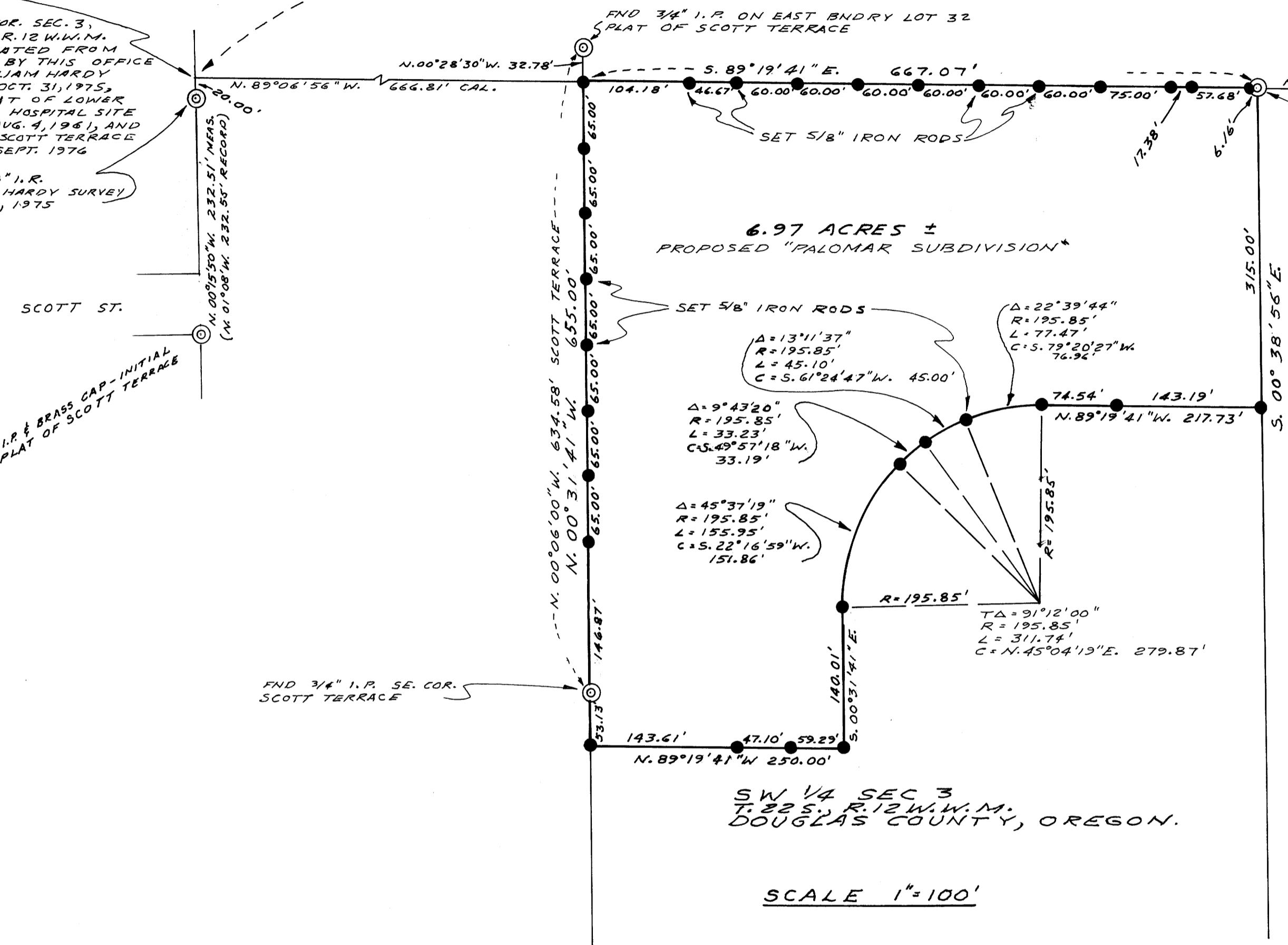
W. 1/4 MONUMENT
 PLAT OF LOWER UMPQUA HOSPITAL SITE
 "IRON PIPE SET IN CONCRETE" 1/2" x 3/8" GAL. IRON PIPE
 WARREN WAGGONER SURVEY, M-1-17
 "3/4" IRON PIPE SET IN CONCRETE
 WILLIAM HARDY SURVEY, OCT. 31, 1975
 "FND I.R. SET IN CONCRETE
 PLAT OF SCOTT TERRACE, FEB, 1976 - SEPT. 1976
 "FND 2" I.R. IN CONCRETE
 MONUMENT NOT FND. THIS SURVEY

W. 1/4 COR. SEC. 3,
 T. 22 S., R. 12 W. W.M.
 CALCULATED FROM
 SURVEY BY THIS OFFICE
 FOR WILLIAM HARDY
 DATED OCT. 31, 1975,
 AND PLAT OF LOWER
 UMPQUA HOSPITAL SITE
 DATED AUG. 4, 1961, AND
 PLAT OF SCOTT TERRACE
 DATED SEPT. 1976

FND 5/8" I.R.
 WILLIAM HARDY SURVEY
 OCT. 31, 1975

FND 2" I.R. & BRASS CAP - INITIAL
 POINT, PLAT OF SCOTT TERRACE

BASIS OF BEARING S. 89°16'30"E. 2669.30' MEAS. (2671.01' CS#M1-17)



LEGEND

- ⊙ MONUMENTS FOUND AS INDICATED
- MONUMENTS SET 5/8" x 30" I.R. IN Nov. 1979

REFERENCE

CS # M 1-17
 PLAT OF LOWER HOSPITAL SITE, VOL. 12, P. 9, PLAT RECORDS OF DOUGLAS COUNTY
 WILLIAM HARDY PROPERTY SURVEY, OCTOBER 31, 1975
 PLAT OF SCOTT TERRACE, SEPTEMBER 1976

INSTRUMENTS

JENA 020A ONE MINUTE THEODOLITE
 MCHENRY MAC I-H E.D.M.

NARRATIVE

THE PURPOSE OF THIS SURVEY WAS TO ESTABLISH THE BOUNDARIES OF THE PROPOSED "PALOMAR SUBDIVISION" AND SET ALL LOT CORNERS. ORIGINALLY THE BASIS OF BEARING WAS BETWEEN THE 2" I.P. AT THE CENTER OF SEC. 3 AND THE 2" I.R. LABELED "1/8 COR." AND THE NORTH BOUNDARY OF "PALOMAR" WAS AN EXTENSION OF THIS LINE. NO INTERIOR MONUMENTS WERE SET. THE WEST LINE OF "PALOMAR" WAS ESTABLISHED FROM TWO 3/4" I.R. ON THE EAST BOUNDARY OF SCOTT TERRACE. THE EAST LINE OF "PALOMAR" WAS CALCULATED FROM THE SURVEY NO. M-1-17. NO RECORD COULD BE FOUND TO SUBSTANTIATE THE 2" I.P. AT THE NE CORNER OF "PALOMAR" AS A 1/8 CORNER. A TRAVERSE WAS THEN RUN TO TIE THE W. 1/4 COR. OF SEC. 3. THIS CORNER COULD NOT BE LOCATED, SO THE POSITION OF THE 1/4 CORNER WAS CALCULATED FROM TIES TO A 5/8" I.R. SET IN OCT. 31, 1975 (WILLIAM HARDY SURVEY) AND A 2" I.P. & CAP SET AS THE "INITIAL POINT" FOR THE PLAT OF SCOTT TERRACE. THE BEARINGS WERE THEN ADJUSTED ON THIS SURVEY TO COINCIDE WITH THE BEARING BETWEEN THE CENTER OF SEC. 3 AND THE W. 1/4 CORNER OF SEC. 3 AS SHOWN ON CS # M-1-17. THE PLAT OF "PALOMAR" HAS, AS OF THIS DATE, NEVER BEEN FILED NOR HAVE ANY IMPROVEMENTS BEEN CONSTRUCTED. ALL TRAVERSES WERE BALANCED BY THE COMPASS RULE AS PROGRAMED FOR THE HP-97.

FEBRUARY 16, 1982

SCALE 1"=100'

SW 1/4 SEC 3
 T. 22 S., R. 12 W. W.M.
 DOUGLAS COUNTY, OREGON.

REGISTERED
 PROFESSIONAL
 LAND SURVEYOR

Edward W. Riley

OREGON
 EDWARD W. RILEY
 #1312

COUNTY SURVEYORS FILE DATA
 DO NOT REMOVE FROM OFFICE

PLAT SURVEY FOR:
 PALOMAR INC.
 EUGENE, OREGON
 A PORTION OF THE SW 1/4
 SEC. 3, T. 22 S., R. 12 W. W.M.
 CITY OF REEDSPORT OREGON

edward w. riley
 ARCHITECT-ENGINEER
 AIRPORT TERMINAL BLDG.
 NORTH BEND, OREGON 97459

C.S. File No. 63/90
 MAP FILE M-91-18