

COUNTY SURVEYORS FILE DATA
DO NOT REMOVE FROM OFFICE

South Line, Sections 22 and 23,
Township 31 South, Range 8 West, Willamette Meridian, Oregon
United States Department of the Interior

Bureau of Land Management

Surveyed by Don E. Garrett RPLS 544 State of Oregon
Nov. 1972 Contract No. 53500-CT2-334(N) Scale 1" = 660'

FILED *BS*
RECEIVED *BS*

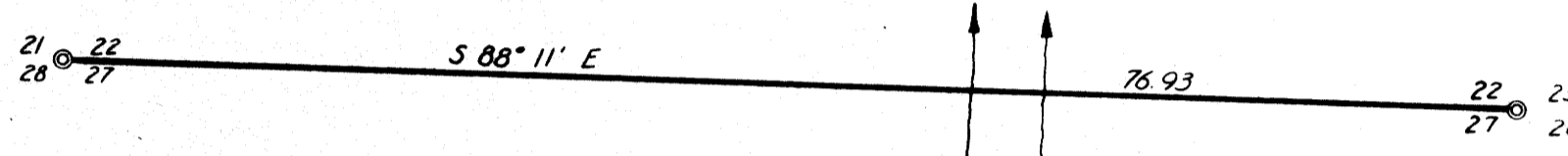
FEB 10 1982

COUNTY SURVEYOR
CLATSOP COUNTY, ORE.

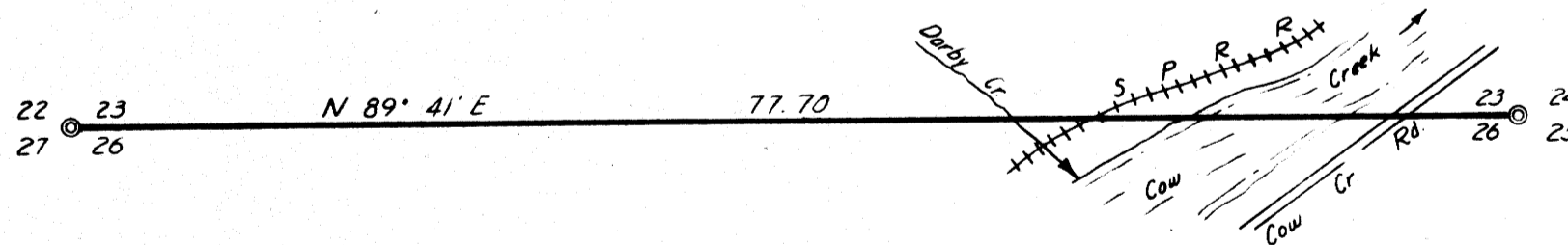
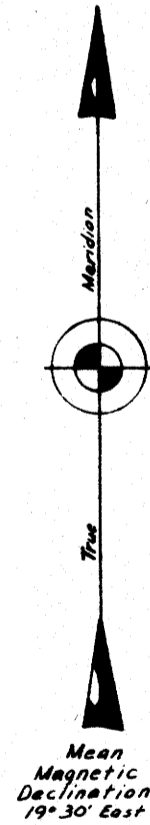
Don E. Garrett

COUNTY SURVEYORS FILE DATA
DO NOT REMOVE FROM OFFICE

Fd.	Brass Cap	Marked	County Surveyor's
Office	S 21, S 22, S 27, S 28, T 31 S, R 8 W, 1970		
45"	Fir Bears	N 67° W 9 Lks.	(Chopped 'X')
10"	"	N 27° W 52 "	(Scribing)
11"	"	N 64° E 24 "	"
36"	"	S 7° E 46 "	"
20"	"	S 8° W 57 "	"



Fd.	Brass Cap	Marked	County Surveyor's
Office	S 22, S 23, S 26, S 27, T 31 S, R 8 W, 1970		
21"	Fir Bears	S 32° W 65 Lks.	(Scribing)
19"	"	S 51° E 22 "	"
16"	"	N 65° E 32 "	"
27"	"	N 9° W 18 "	"



Fd.	Brass Cap	Marked	County Surveyor's
Office	S 23, S 24, S 25, S 26, T 31 S, R 8 W, 1967		
43"	Fir Bears	S 53° W 27 Lks.	(Scribing)
12"	Maple "	S 61° E 30 "	(Scar)
8"	Live In "	N 20° E 37 "	(Scribing)
24"	Fir "	N 23° W 39 "	"

COUNTY SURVEYORS FILE DATA
DO NOT REMOVE FROM OFFICE

MAP FILE *M 21-15*

MAP FILE *M 21-15*