

COUNTY SURVEYORS FILE DATA  
DO NOT REMOVE FROM OFFICE

Section 21, Township 31 South, Range 8 West, Willamette Meridian, Oregon  
 United States Department of the Interior  
 Bureau of Land Management  
 Surveyed by Don E. Garrett RPLS 544 State of Oregon  
 November 1972 Contract No. 53500-CT2-334(N) Scale 1" = 660'

FILED *BS*  
 RECEIVED *BS*  
 FEB 10 1982  
 COUNTY SURVEYOR  
 CLATSOP COUNTY, ORE.

*Don E. Garrett*

COUNTY SURVEYORS FILE DATA  
DO NOT REMOVE FROM OFFICE

MAP FILE *M 91-14*

Fd Brass Cap Marked County Surveyor's  
 Office, S16, S17, S20, S21, T31S, R8W, 1958  
 26" Fir Bears N 84° E 55 Lks. (Scar)  
 7" " " N 34° E 86 " "  
 37" " " N 32° W 18 " "  
 23" " " S 44 1/2° W 56 " "  
 34" " " S 13° E 24 " (Scribed)  
 16" " " S 73° E 9 " (Scar)

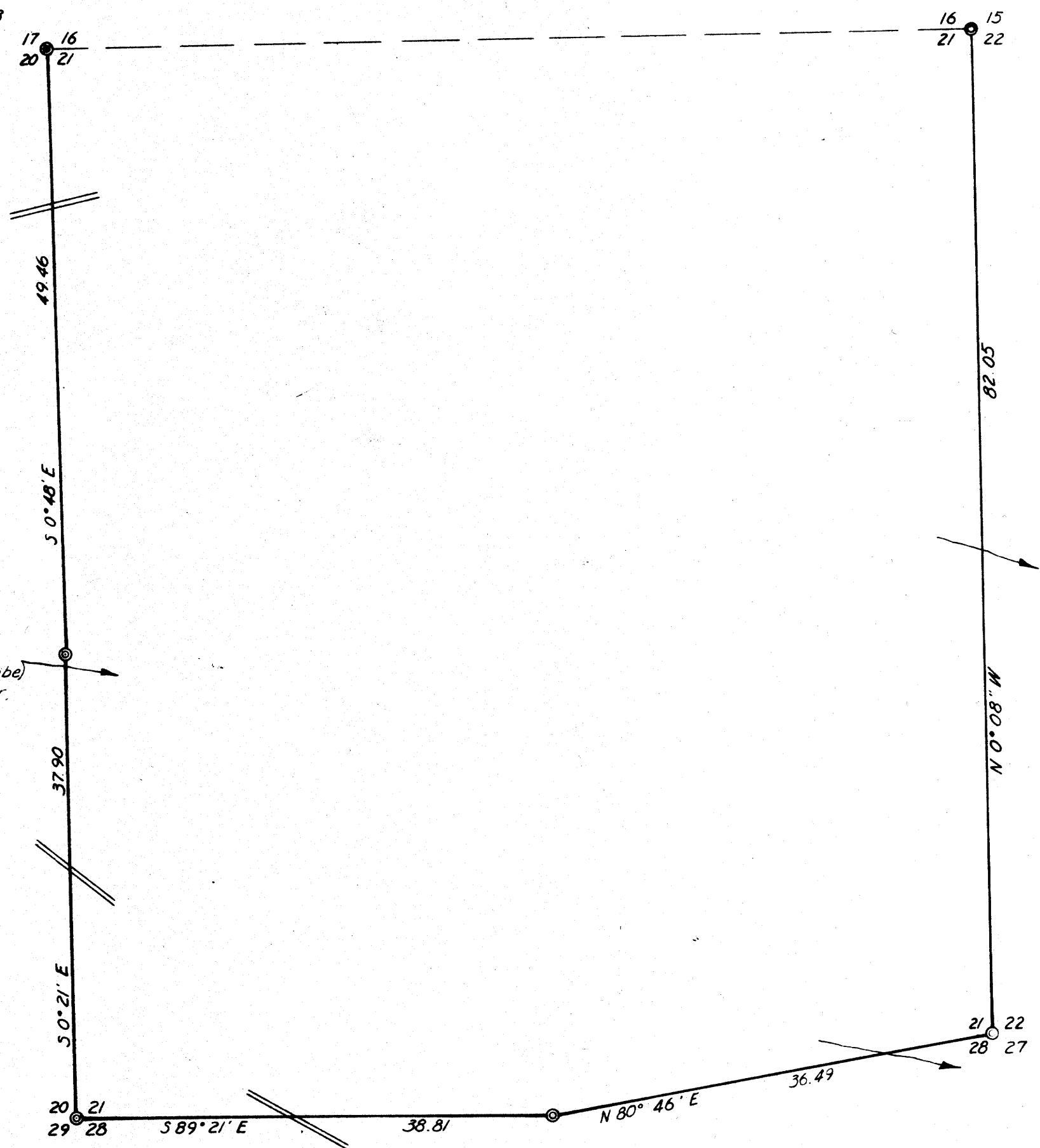
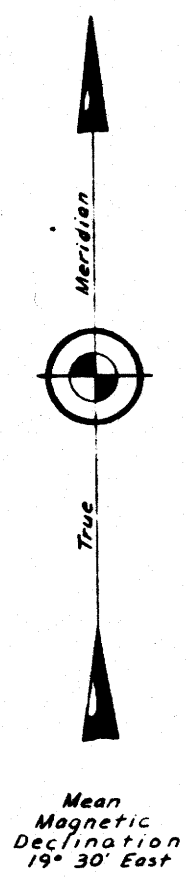
Fd Brass Cap Marked, S 15, S16, S21, S22,  
 T31S, R8W, 1961  
 16" Cedar Bears N 45° E 29 Lks. (axe marks on bark)  
 26" Fir " S 83° E 30 " (Scribing)  
 36" " " S 85° W 35 " "  
 25" " " N 56° E 66 " (Scar)  
 30" " " N 59 1/2° W 110 " "

Fd Brass Cap Marked County Surveyor's  
 Office, 1/4 S20, S21, T31S, R8W  
 20" Snag Bears N 88° W 22 Lks. (Scribe)  
 9" Cedar " S 11° E 67 " (Scar)

Fd 1 1/2" Galv. Iron Pipe  
 S 20, S21, S28, S29, T31S, R8W  
 7" Madrone Bear. N 38° W 10 Lks.  
 6" " " N 15° E 38 "  
 6" " " S 68° E 13 "  
 30" Fir BT (Down)

Fd Brass Cap Marked County Surveyor's  
 Office, 1/4 S21, S28, T31S, R8W, 1958  
 16" Fir Bears S 19° E 12 Lks. (Scar)  
 12" " " S 80° E 16 " "  
 16" " " N 38° E 16 " "

Fd Brass Cap Marked County Surveyor's  
 Office, S21, S22, S27, S28, T31S, R8W, 1970  
 45" Fir Bears N 67° W 9 Lks. (Chopped 'X')  
 10" Fir Bears N 27° W 52 Lks. (Scribing)  
 11" " " N 64° E 24 " "  
 36" " " S 7° E 46 " "  
 20" " " S 8° W 51 " "



COUNTY SURVEYORS FILE DATA  
DO NOT REMOVE FROM OFFICE

MAP FILE *M 91-14*