

COUNTY SURVEYORS FILE DATA
DO NOT REMOVE FROM OFFICE

Section 1, Township 31 South, Range 8 West, Willamette Meridian, Oregon
United States Department of the Interior
Bureau of Land Management
Surveyed by Don E. Garrett RPLS 544 State of Oregon
August 1972 Contract No. 53500-CT2-334(N) Scale 1" = 660'

FILED *BS*
RECEIVED *BS*
FEB 10 1982
COUNTY SURVEYOR
DOUGLAS COUNTY, ORE.

T30S R8W
Sec. 36

COUNTY SURVEYORS FILE DATA
DO NOT REMOVE FROM OFFICE

MAP FILE *M. 91-12*

FD. BRASS CAP MARKED CS OFFICE 1967
S35, S36, T30S, R8W, S1, S2, T31S, R8W
10" Madrone Bears N9 1/2°W 26 Lks. (Shows Scribe)
9" Fir " N79 3/4°W 9 Lks. (" Scar)
6" Fir " S19°W 30 Lks. (" Scribe)
14" Madrone " S77 3/4°E 20 Lks. " "
7" Fir " S81 1/2°E 35 Lks. " "
10" Madrone " N47 1/2°E 26 Lks. " "
7" Fir " N20 1/2°E 26 Lks. " "

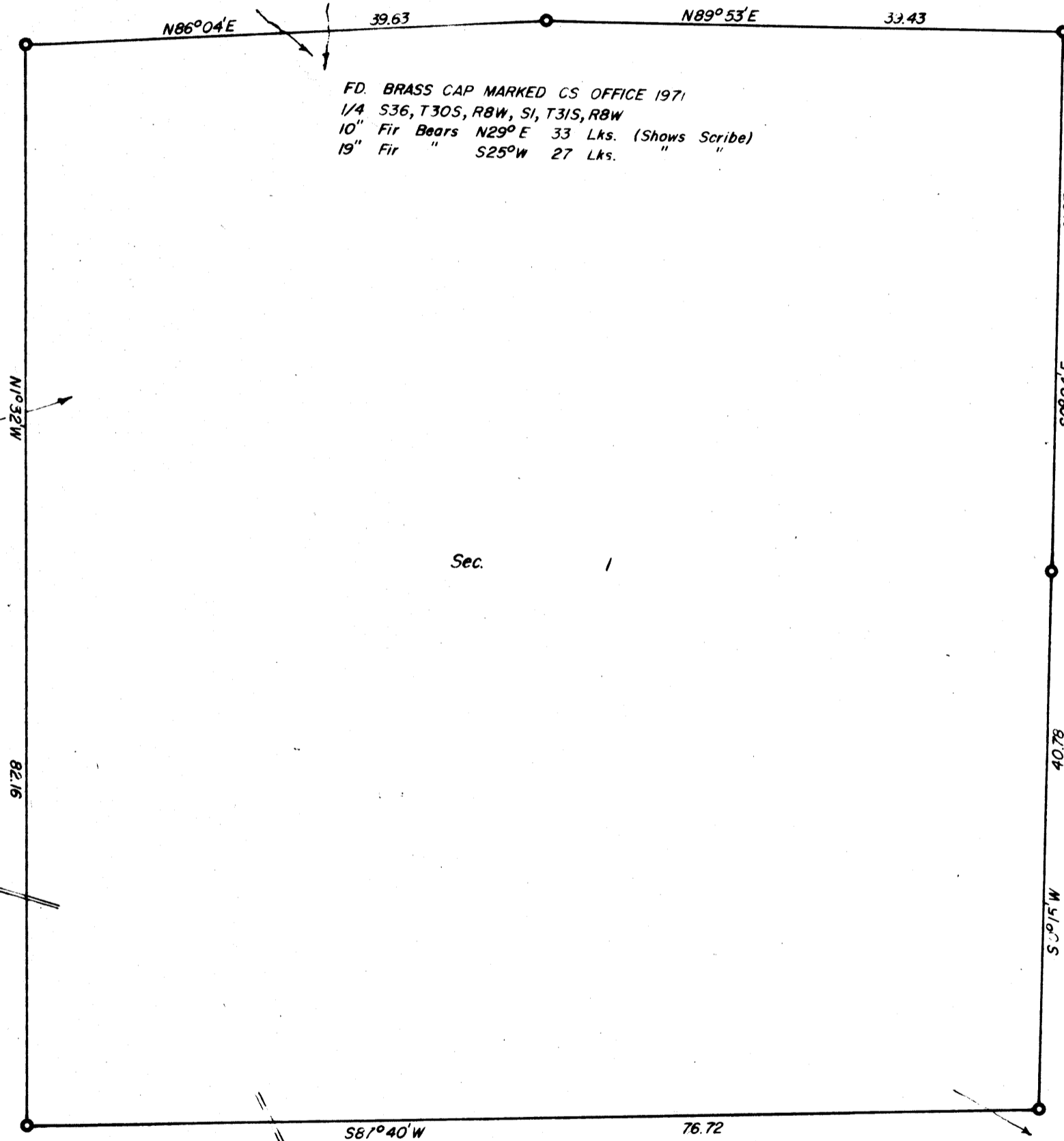
FD. BRASS CAP MARKED CS OFFICE 1971
1/4 S36, T30S, R8W, S1, T31S, R8W
10" Fir Bears N29°E 33 Lks. (Shows Scribe)
19" Fir " S25°W 27 Lks. " "

FD. BRASS CAP MARKED GLO SURVEY 1916
9" Live Oak Bears N22°W 31 Lks.
7" Fir " S26°W 7 Lks.
9" Madrone " N36 1/2°E 33 Lks.
9" Live Oak " S74 1/2°E 41 Lks.

FD. BRASS CAP UNDER LARGE FIR WIND
54" Pine Bears S52°E 39 Lks. Shows T31S
44" Fir " N73°W 49 Lks. Shows S36 R7W
6

FD. BRASS CAP MARKED CS OFFICE 1967
39" Fir Bears S40°E 6 Lks. (Shows Scribe)
19" Cedar " S53°W 12 Lks. " "
19" " " N28 1/2°W 25 Lks. " "
18" Fir " N30°E 71 Lks. (" Scar)

FD. BRASS CAP MARKED GLO SURVEY 1918
S1, S12, T31S, R8W, S6, S7, T31S, R7W
16" Fir Bears N1°E 34 Lks. (Shows Scar)
25" Fir " N19°W 26 Lks. " "
17" Fir " S46°W 21 Lks. " "
14" Fir " S20°E 50 Lks. " "



Sec. 2

Sec. 1

Sec. 12

COUNTY SURVEYORS FILE DATA
DO NOT REMOVE FROM OFFICE

RECEIVED
DON E. GARRETT
AUG 10 1972
544

MAP FILE *M. 91-12*