

COUNTY SURVEYORS FILE DATA
DO NOT REMOVE FROM OFFICE

Section 23, Township 30 South, Range 9 West, Willamette Meridian, Oregon
United States Department of the Interior
Bureau of Land Management

Surveyed by Don E. Garrett RPLS 544 State of Oregon
September 1972 Contract No. 53500-CT2-334(N) Scale 1" = 660'

FILED *BS*
RECEIVED *BS*

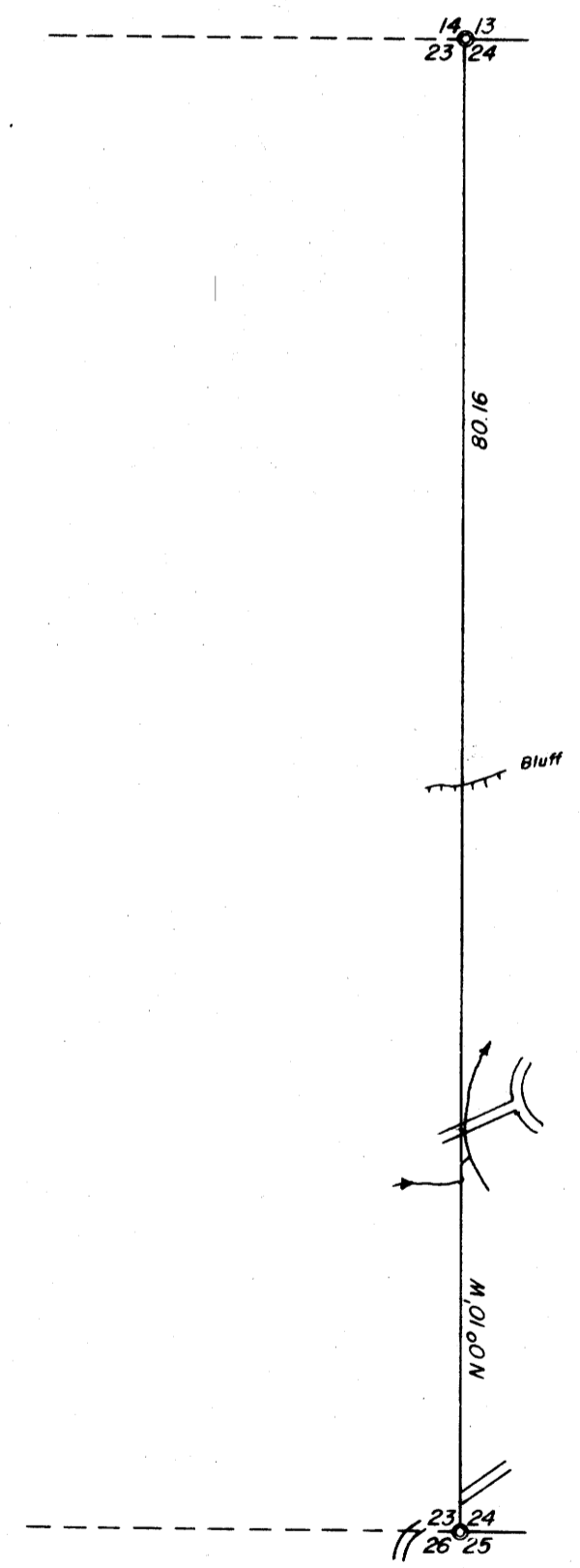
FEB 10 1982

COUNTY SURVEYOR
DOUGLAS COUNTY, ORE.

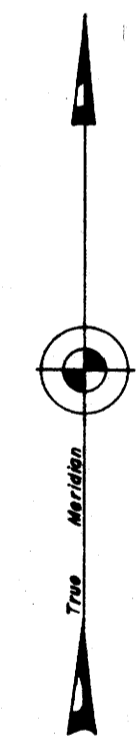
BS

COUNTY SURVEYORS FILE DATA
DO NOT REMOVE FROM OFFICE

Fd. Brass Cap Marked S13, S14, S23, S24, T30S,
R9W, W.M., Co. Surveyor, 1970
23" Cedar Bears N74°E 24 Lks. (Scar)
8" W. Fir " S74 1/2°E 18 Lks. (Scribing)
16" W. Fir Snag " S73 1/4°E 71 Lks. "
11" Fir " N42 3/4°W 80 Lks. "
7" W. Fir " S15 3/4°W 71 Lks. "



Fd. Brass Cap Marked S23, S24, S25, S26, T30S,
R9W, W.M., Co. Surveyor, 1964
15" W. Fir Bears N71 1/4°E 133 Lks. (Scribing)
15" Fir Stump " S61 1/2°W 211 Lks. "
15" Fir Stump " S47°W 16 Lks. "
22" Fir Stump " N27 1/2°W 24 Lks. "
24" Fir Stump " S64°E 11 Lks. "



Mean
Magnetic
Declination
19° 30' East

REG. SURVEYOR
PROFESSIONAL
LAND SURVEYOR
Don E. Garrett
OREGON
JUL 14, 1961
DON E. GARRETT
544

COUNTY SURVEYORS FILE DATA
DO NOT REMOVE FROM OFFICE

MAP FILE M91-11

MAP FILE M91-11