

Section 31, Township 30 South, Range 8 West, Willamette Meridian, Oregon  
 United States Department of the Interior  
 Bureau of Land Management  
 Surveyed by Don E. Garrett RPLS 544 State of Oregon  
 September 1972 Contract No. 53500-CT2-334(N) Scale 1" = 660'

FILED *BL*  
 RECEIVED *BL*  
 FEB 10 1982  
 COUNTY SURVEYOR  
 DOUGLAS COUNTY, ORE.  
*BL*

COUNTY SURVEYORS FILE DATA  
 DO NOT REMOVE FROM OFFICE

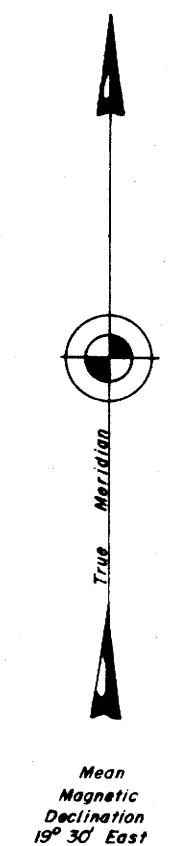
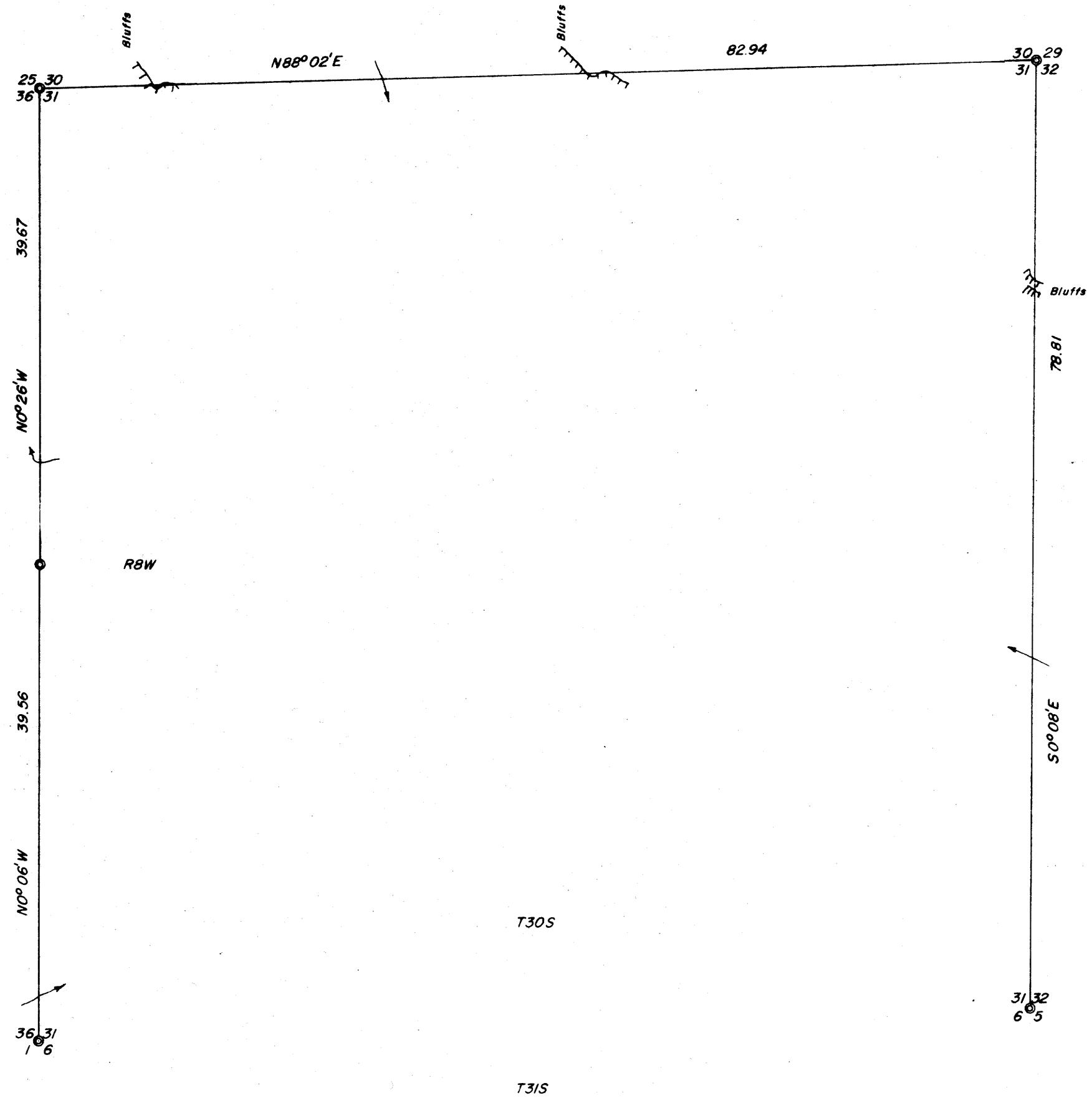
Fd. Brass Cap Marked CS Office 1968  
 S25, S36, R9W & S30, S31, T30S, R8W  
 30" Fir Bears N44°W 37 Lks. (Shows Scribing)  
 10" Fir " S81°W 39 Lks. (Shows Scar)  
 8" Fir " S53°E 24 Lks. (Shows Scribing)  
 11" W Oak " N63°E 51 Lks. " "  
 30" Pine " N27°E 87 Lks. " "  
 9" W Oak " N10°W 45 Lks. " "  
 54" Fir " S1 V2°W 540 Lks. " "

Fd. Brass Cap Marked CS Office 1968  
 T30S, 1/4 S31, R8W & S36, R9W  
 8" Hemlock Bears S4°W 21 Lks. (Shows Scribing) R9W  
 8" Hemlock Bears N36°E 24 Lks. " "  
 33" Fir Bears N52°W 33 Lks. (Bark Scribe)

Fd. Brass Cap Marked US Cadastral Survey BLM 1962  
 T30S, S31 R8W, S36 R9W, T31S, S6 R8W, S1 R9W  
 27" Fir Bears N73°W 25 Lks. (Shows Scar)  
 34" Fir " S68°W 38 Lks. (Shows Scribing)  
 16" Fir " S23°E 26 Lks. (Shows Scar)  
 33" Fir " N54 V4°E 53 Lks. " "

Fd. Brass Cap Marked C.S. Office 1965  
 S29, S30, S31, S32, T30S, R8W, W.M.  
 23" Laurel Bears N5°W 56 Lks. (Shows Scribing)  
 13" B Oak " S28°W 45 Lks. " "  
 7" D. Fir " S60°E 9 Lks. " "  
 11" Laurel " N17°E 97 Lks. " "

Fd. Brass Cap Marked US Cadastral Survey  
 BLM 1962, S5, S6, T31S & S31, S32, T30S, R8W  
 62" Fir Bears S17 V2°E 40 Lks. (Bark Scribe)  
 18" Fir " S42°E 25 Lks. (Shows Scar)  
 47" Fir " N21°W 42 Lks. (Bark Scribe)  
 26" Fir " N85°E 66 Lks. (Shows Scribing)  
 8" Cedar " S89°W 42 Lks. " "



COUNTY SURVEYORS FILE DATA  
 DO NOT REMOVE FROM OFFICE

*Don E. Garrett*

COUNTY SURVEYORS FILE DATA  
 DO NOT REMOVE FROM OFFICE

MAP FILE *M 91-10*

MAP FILE *M 91-10*