

SURVEY IN NE1/4, SECTION 35, T24S, R6W, W.M.,  
 NE1/4, NW1/4, SW1/4, SE1/4, SECTION 36, T24S, R6W, W.M.,  
 SW1/4, SECTION 30, T24S, R5W, W.M.,  
 NE1/4, NW1/4, SW1/4, SE1/4, SECTION 31, T24S, R5W, W.M.,  
 N1/2, SECTION 6, T25S, R5W, W.M.,  
 NW1/4, SECTION 5, T25S, R5W, W.M.

FOR: ALLYN FORD  
 BY: BHW ENGINEERING & SURVEYING, INC.  
 1205 SE COURT  
 ROSELBURG, ORE.  
 NOVEMBER 1981

REGISTERED PROFESSIONAL LAND SURVEYOR  
 ROMANSO E. WARE  
 OREGON  
 NO. 18  
 ROMANSO E. WARE  
 1005

NARRATIVE: SURVEY TO PARTITION THE BAIMBRIDGE RANCH INTO THREE PARCELS, TWO 200 ACRES PARCELS AND ONE BEING THE REMAINING OF 600 ACRES. INSTRUCTIONS TO THIS SURVEYOR WERE TO MEASURE THE EXISTING FENCELINES AROUND THE PERIMETER AND WRITE DESCRIPTIONS FOR QUITCLAIM DEEDS WHICH WILL BE PREPARED AND ADMINISTERED BY JERRY THOMASSON. THE TWO AREAS OF EXCEPTION ARE THE EASTERLY LINE OF THE RANCH (WHICH IS WELL MONUMENTED BY EARLIER SURVEY) AND THE EAST LINE OF THE THOMAS & COLVIN D.L.C. #40. NO CORNER EVIDENCE WAS FOUND AT N.E. AND S.E. CORNERS OF D.L.C. #40. THE EAST BOUNDARY LINE OF D.L.C. #40 WAS ESTABLISHED BY BROKEN LINE COMPUTATION BASED ON THE NORTH LINE OF SECTION 36 AS CONTROL AND THE N.E. CORNER OF D.L.C. #40 PROPORTIONED THEREON (POINT OF BEGINNING AT THE N.W. CORNER OF SECTION 36, PROCEEDING CLOCKWISE AROUND THE D.L.C. TO THE PROPORTIONED N.E. CORNER). IT IS THIS SURVEYOR'S OPINION THAT A QUITCLAIM DEED BE PREPARED ON THIS LINE TO PREVENT ANY QUESTIONS IN THE FUTURE. ALL INTERIOR LINES POSTED WITH STEEL FENCE, 20" DIA. 6 FEET IN LENGTH.  
 FIELD CREW: E. QUIMBY, M. RADCLIFFE AND R. WARE.  
 EQUIPMENT: WILD T1 THEODOLITE MOUNTED WITH A LEITZ RED-1 E.D.M.  
 OFFICE COMPUTATIONS AND DRAFTING: R. WARE AND D. HOPKINS.

NOTE: IF, FOR SOME REASON, QUITCLAIM AGREEMENTS ARE NOT EXECUTED BETWEEN ADJACENT PROPERTY OWNERS ALONG THE MONUMENTED FENCELINES, THE SET MONUMENTS SHOULD BE RECOGNIZED AS FENCELINE LOCATION ONLY AND NOT NECESSARILY THE PROPERTY LINE.

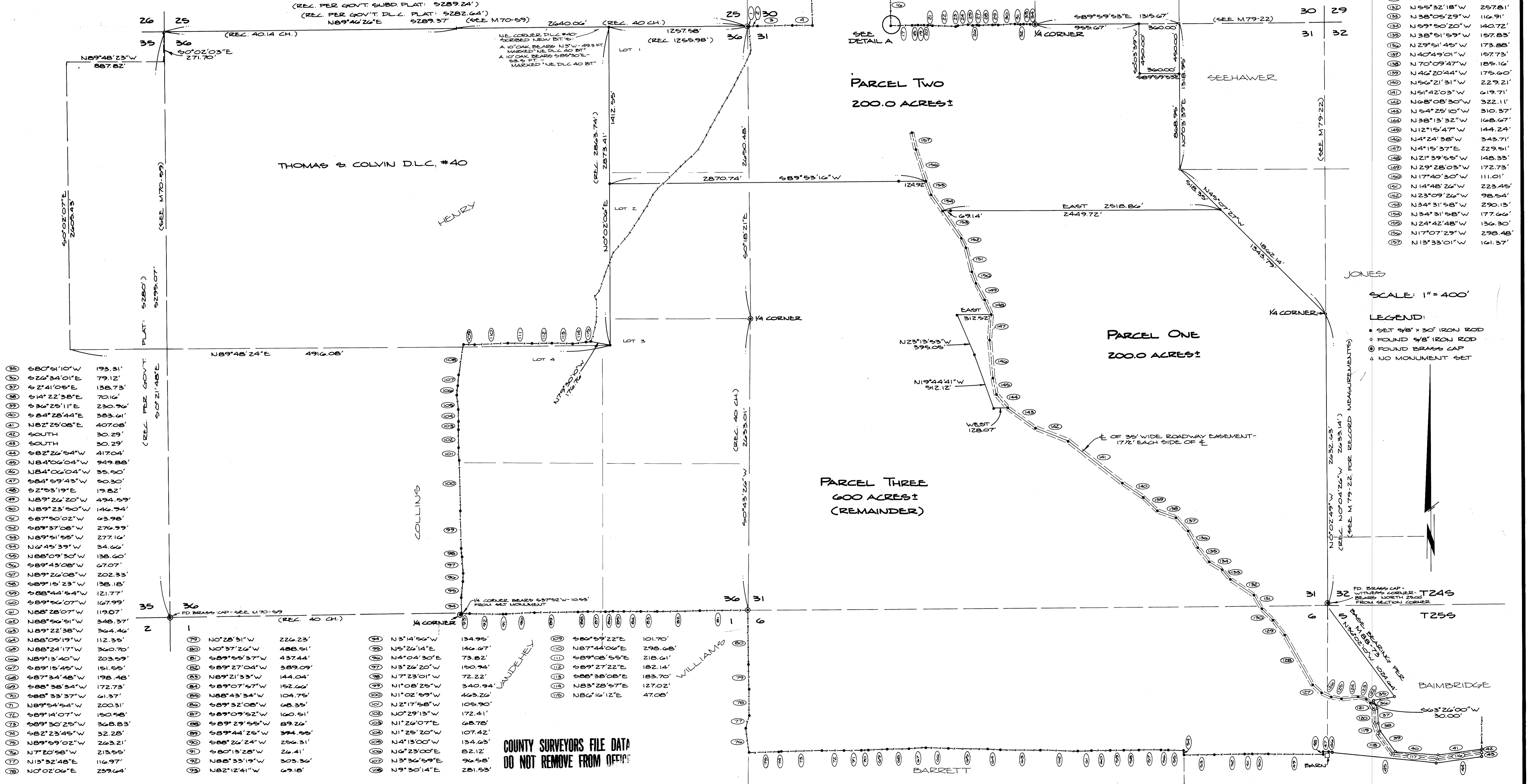
- 1 548°29'25"E 7.34'
- 2 N86°09'48"E 81.48'
- 3 N89°25'59"E 317.38'
- 4 N89°29'51"E 180.59'
- 5 N1°24'57"W 549.40'
- 6 N0°04'22"E 271.83'
- 7 N0°44'32"E 233.54'
- 8 N1°03'02"E 264.31'
- 9 N89°41'04"E 261.63'
- 10 N89°31'18"E 447.08'
- 11 S0°26'04"E 332.58'
- 12 S0°32'00"E 220.89'
- 13 S0°06'08"E 106.66'
- 14 S0°44'52"E 136.25'
- 15 S0°03'00"W 193.02'
- 16 S0°45'40"E 302.42'
- 17 S88°11'11"E 193.28'

- 18 N88°46'08"E 49.51'
- 19 S88°01'31"E 54.53'
- 20 N86°31'57"E 34.26'
- 21 S84°10'29"E 47.03'
- 22 S87°05'46"E 211.98'
- 23 N59°53'11"E 17.50'
- 24 N85°11'59"E 93.89'
- 25 S84°03'30"E 43.53'
- 26 N80°26'13"E 37.23'
- 27 S73°48'03"E 23.13'
- 28 N87°42'51"E 121.75'
- 29 S86°33'52"E 50.20'
- 30 N86°40'40"E 154.34'
- 31 S82°40'30"E 52.96'
- 32 N79°49'47"E 26.38'
- 33 N89°06'03"E 59.27'
- 34 S84°21'52"E 44.37'

FILED  
 RECEIVED  
 DEC 24 1981  
 COUNTY SURVEYOR  
 DOUGLAS COUNTY, ORE.

COUNTY SURVEYORS FILE DATA  
 DO NOT REMOVE FROM OFFICE

- E EASEMENT:
- 18 S82°25'08"W 406.65'
  - 17 N84°28'45"W 400.41'
  - 18 N56°25'10"W 250.18'
  - 19 N14°22'37"W 79.08'
  - 20 N2°41'06"W 135.45'
  - 21 N24°34'02"W 72.77'
  - 22 N46°20'52"W 55.47'
  - 23 N77°09'38"W 72.44'
  - 24 S82°17'27"W 155.00'
  - 25 N80°24'32"W 97.56'
  - 26 N66°12'30"W 89.66'
  - 27 N48°36'04"W 106.89'
  - 28 N29°18'59"W 523.64'
  - 29 N38°30'50"W 163.15'
  - 30 N42°13'38"W 147.82'
  - 31 N32°04'51"W 141.38'
  - 32 N55°32'18"W 257.81'
  - 33 N38°05'29"W 116.91'
  - 34 N59°50'20"W 140.72'
  - 35 N38°51'59"W 157.83'
  - 36 N29°51'45"W 173.88'
  - 37 N40°49'01"W 157.73'
  - 38 N70°09'47"W 185.16'
  - 39 N46°20'44"W 175.60'
  - 40 N56°21'31"W 229.21'
  - 41 N51°42'03"W 619.71'
  - 42 N68°08'30"W 322.11'
  - 43 N54°25'10"W 310.37'
  - 44 N38°13'32"W 168.67'
  - 45 N12°15'47"W 144.24'
  - 46 N4°24'38"W 343.71'
  - 47 N4°15'37"E 229.51'
  - 48 N21°39'55"W 148.33'
  - 49 N29°28'03"W 172.73'
  - 50 N17°40'30"W 111.01'
  - 51 N14°48'26"W 223.45'
  - 52 N23°09'26"W 98.54'
  - 53 N34°31'58"W 290.13'
  - 54 N24°42'48"W 136.30'
  - 55 N17°07'29"W 298.48'
  - 56 N13°33'01"W 161.37'



- 35 S80°51'10"W 193.31'
- 36 S26°34'01"E 79.12'
- 37 S2°41'05"E 138.73'
- 38 S14°22'38"E 70.16'
- 39 S36°25'11"E 230.36'
- 40 S84°28'44"E 383.61'
- 41 N82°25'08"E 407.08'
- 42 SOUTH 30.29'
- 43 SOUTH 50.29'
- 44 S82°26'54"W 417.04'
- 45 N84°06'04"W 949.88'
- 46 N84°06'04"W 35.50'
- 47 S84°59'43"W 50.30'
- 48 S2°53'19"E 19.82'
- 49 N89°26'20"W 494.59'
- 50 N89°23'50"W 146.34'
- 51 S87°50'02"W 63.98'
- 52 S89°37'08"W 276.99'
- 53 N89°51'55"W 277.16'
- 54 N6°45'39"W 34.66'
- 55 N88°09'30"W 138.60'
- 56 S89°43'08"W 67.07'
- 57 N89°26'08"W 202.33'
- 58 S89°15'23"W 138.18'
- 59 S88°44'54"W 121.77'
- 60 S89°56'07"W 167.99'
- 61 N88°28'07"W 119.07'
- 62 N88°56'51"W 348.37'
- 63 N89°22'38"W 364.46'
- 64 N88°05'19"W 112.35'
- 65 N88°24'17"W 360.70'
- 66 N89°13'40"W 203.59'
- 67 S89°15'45"W 151.55'
- 68 S87°34'48"W 198.48'
- 69 S88°38'34"W 172.73'
- 70 S88°33'37"W 61.37'
- 71 N89°54'54"W 200.31'
- 72 S89°14'07"W 150.58'
- 73 S89°30'25"W 368.83'
- 74 S82°23'45"W 32.28'
- 75 N89°59'02"W 263.21'
- 76 N7°02'58"W 213.55'
- 77 N13°32'48"E 116.97'
- 78 N0°02'06"E 239.64'

- 79 N0°28'31"W 226.23'
- 80 N0°37'26"W 488.51'
- 81 S89°55'37"W 437.44'
- 82 S89°27'04"W 389.09'
- 83 N89°21'33"W 144.04'
- 84 S89°07'57"W 152.66'
- 85 N88°43'34"W 104.75'
- 86 S89°32'08"W 68.35'
- 87 S89°09'52"W 160.51'
- 88 S89°29'55"W 89.26'
- 89 S89°44'25"W 394.55'
- 90 S88°26'24"W 256.31'
- 91 S80°13'28"W 26.41'
- 92 N88°33'19"W 303.36'
- 93 N82°12'41"W 69.18'

- 94 N3°14'56"W 134.95'
- 95 N5°26'14"E 146.67'
- 96 N4°04'30"E 73.82'
- 97 N3°26'20"W 150.34'
- 98 N7°23'01"W 72.22'
- 99 N1°08'25"W 340.94'
- 100 N1°02'59"W 463.26'
- 101 N2°17'58"W 105.90'
- 102 N0°29'13"W 172.41'
- 103 S89°29'55"W 89.26'
- 104 N1°25'20"W 107.42'
- 105 N4°13'00"W 134.63'
- 106 N6°23'00"E 82.12'
- 107 N3°36'59"E 96.55'
- 108 N9°30'14"E 281.53'

- 99 S86°59'22"E 101.70'
- 100 N87°44'06"E 298.68'
- 101 S89°08'55"E 218.61'
- 102 S89°27'22"E 182.14'
- 103 S88°38'08"E 183.70'
- 104 N83°28'57"E 127.02'
- 105 N86°16'12"E 47.08'

SCALE: 1" = 400'  
 LEGEND:  
 • SET 5/8" x 30" IRON ROD  
 ○ FOUND 5/8" IRON ROD  
 ○ FOUND BRASS CAP  
 △ NO MONUMENT SET

COUNTY SURVEYORS FILE DATA  
 DO NOT REMOVE FROM OFFICE