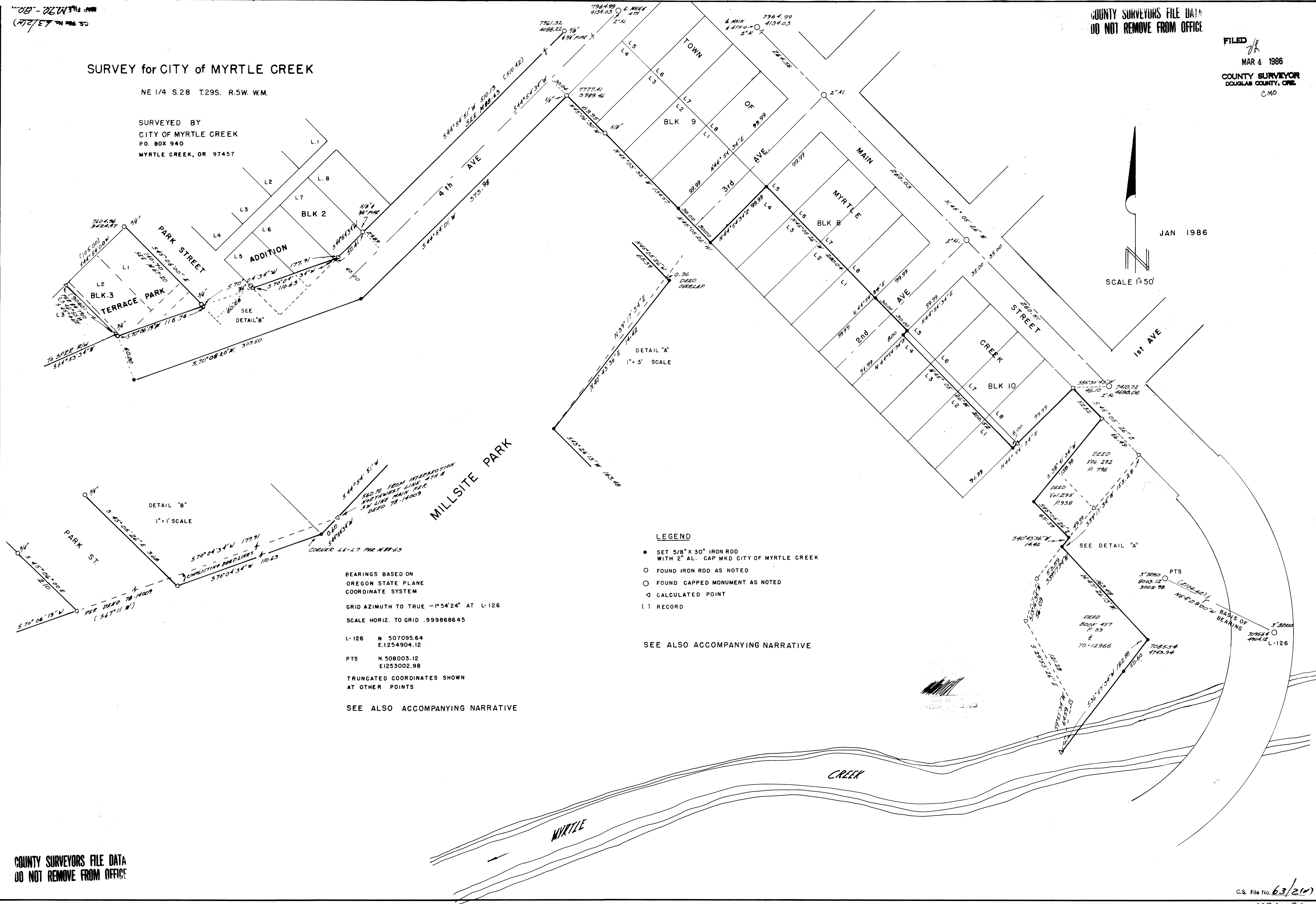


SURVEY for CITY of MYRTLE CREEK

NE 1/4 S.28 T.29S. R.5W. W.M.

SURVEYED BY
CITY OF MYRTLE CREEK
P.O. BOX 940
MYRTLE CREEK, OR 97457

JAN 1986
SCALE 1"=50'



- LEGEND**
- SET 5/8" X 30" IRON ROD WITH 2" AL. CAP MKD CITY OF MYRTLE CREEK
 - FOUND IRON ROD AS NOTED
 - FOUND CAPPED MONUMENT AS NOTED
 - ◊ CALCULATED POINT
 - () RECORD

SEE ALSO ACCOMPANYING NARRATIVE

BEARINGS BASED ON OREGON STATE PLANE COORDINATE SYSTEM

GRID AZIMUTH TO TRUE -1°54'24" AT L-126

SCALE HORIZ. TO GRID .999868645

L-126 N 507095.64
E.1254904.12

PTS N 508003.12
E1253002.98

TRUNCATED COORDINATES SHOWN AT OTHER POINTS

SEE ALSO ACCOMPANYING NARRATIVE