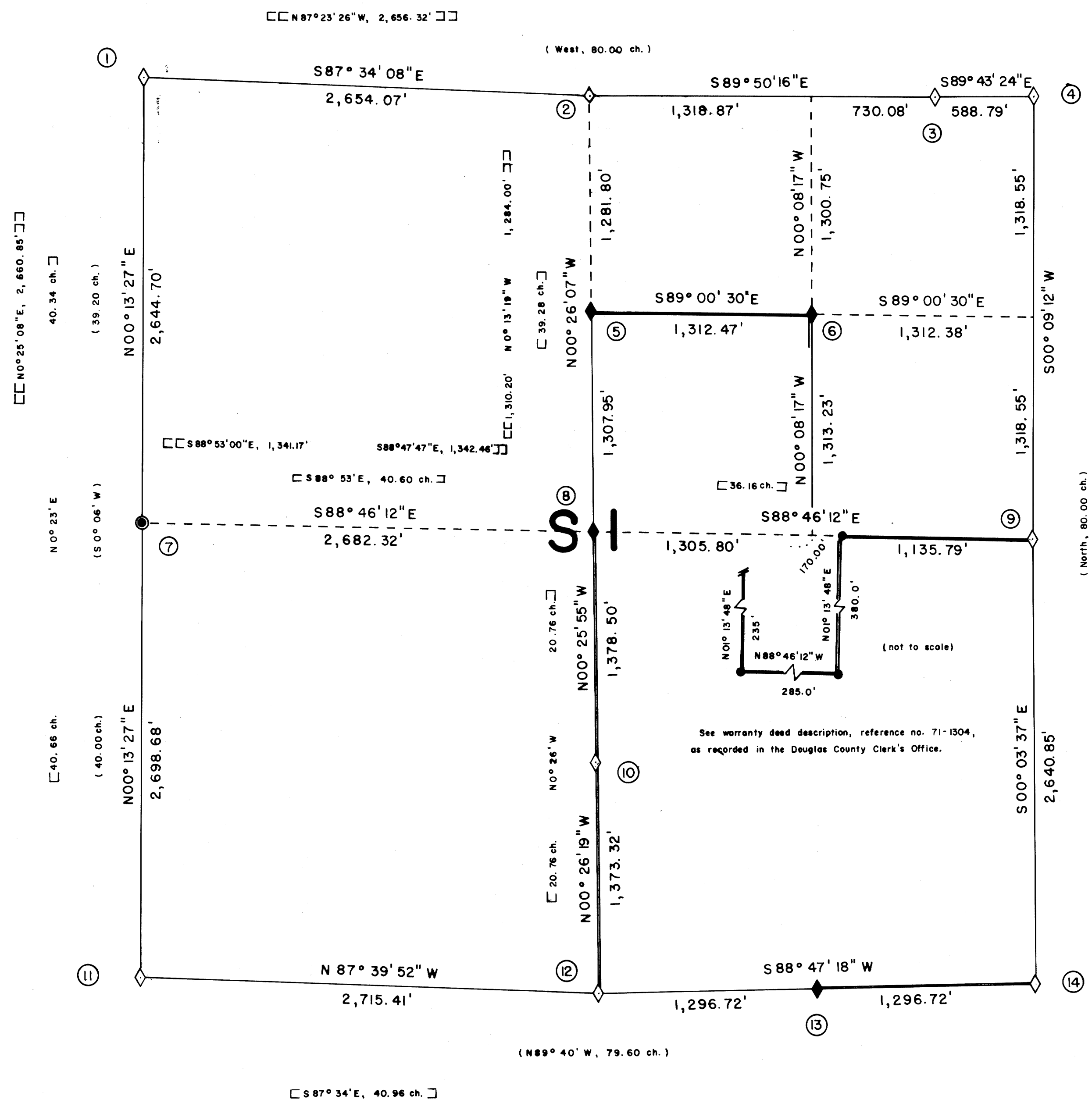
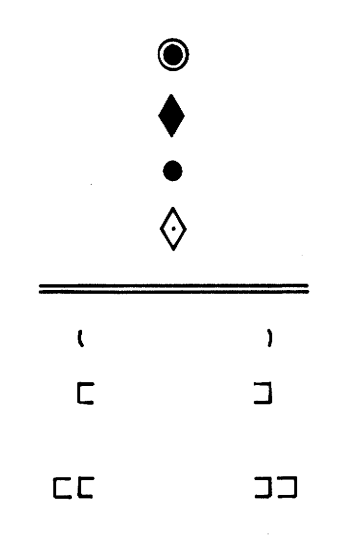


SCALE: 1" = 500'



- ⑧ C1/4 CORNER S1
 Set on ACIP in B.R.A. R.O.W. Ramsey's 1960 1-1/2" iron pipe bears S00°57'15"E, 4.29' from corner. Also set the following accessories:
 9" fir bears N45°W, 59.9'
 5" fir bears N19°E, 69.0'
 Both BT's scribed: C1/4 S1 BT
 An unrecorded 1" iron pipe bears S60°26'40"W, 29.92' from corner.
- ⑨ 1/4 CORNER S1/S6, T28S, R7-1/2 W
 Found a 1924 G.L.O. 2-1/2" brass cap on a 1" iron pipe, and the following accessories:
 A rotted stump bears N78°W, 49.5'
 Rotted face (1924)
 19" chinquapin bears N87°E, 17.7' (rec. = 17.2')
 Closed face (1924)
 23" fir bears N70°W, 37.0'
 Closed face (1961)
- ⑩ CS 1/16 CORNER S1
 Found a 1960 1" iron pipe set by Ramsey, and the following 1960 accessories:
 25" fir bears S53°W, 16.5'
 25" fir bears S42-1/2°E, 13.9'
 Both BT's have closed faces
- ⑪ SECTION CORNER S1/S2/S11/S12
 Found a 1956 Douglas County 2-1/2" brass cap on a 1" iron pipe, and the following accessories:
 30" badly rotted, original fir stump bears S78°W, 18.5'
 Fragmentary scribing visible on loose piece of wood.
 18" fir stump bears S76°E, 13.3'
 No scribing visible (1956)
 21" fir stump, 4' tall, bears N24°W, 6.8'
 Healed face (1956)
 32" hemlock stump, 5' tall, bears S17-1/2°W, 23.5'
 Scribing partially visible (1956)
 21" fir bears N21°E, 29.6' (rec. = N22-1/2°E, 29.0')
 Closed face (1956)
 8" fir bears N50°W, 24.7'
 Scribing visible (1984)
 10" fir bears S05-1/2°E, 64.0'
 Scribing visible (1984)
 New BT: 7" fir bears S63°W, 81.65'
 Scribed: T28S R8W S11 BT
 An unrecorded 1" iron pipe bears S34°13'36"W, 3.25' from corner.
- ⑫ 1/4 CORNER S1/S12
 Found a 1960, 1-1/2" iron pipe set by Ramsey, and the following accessories:
 36" decomposed chinquapin snag bears S27°W, 15.2'
 No scribing (original)
 16" fir bears S57°E, 11.9'
 Closed face (1960)
 14" hemlock (rec. = fir) bears N69°W, 9.8'
 Scribing partially visible (1966)
- ⑬ EAST 1/16 CORNER S1/S12
 Set on ACIP, and the following accessories:
 9" fir bears S40°W, 19.9'
 Scribed: E1/16 S12 BT
 11" fir bears N15°W, 6.0'
 Scribed: E1/16 S1 BT
- ⑭ SECTION CORNER S1/S6/S7/S12
 Found a 1924 G.L.O. 2-1/2" brass cap on a 2" iron pipe, and the following accessories:
 14" fir, uprooted and down, bears S19°W, 12.5'
 No scribing (original)
 18" fir, now badly splintered stump and downed tree, bears N37°E, 23.8' Scribed: T28SR7-1/2 W (1924)
 13" incense cedar bears S49°E, 28.5'
 Closed face (1957)
 New BT's: 10" cedar bears N42°W, 16.4'
 Scribed: T28S R8W S1 BT
 4" fir bears N17°E, 10.3'
 Scribed: X BT
 8" fir bears S26°W, 27.4'
 Scribed: T28S R8W S12 BT

LEGEND



ACAP corner set this survey
 ACIP Government corner set this survey
 ACIP property corner set this survey
 Corner found and used for control
 Property line posted
 1855 original G.L.O. record course
 1960 record course per survey filed C.S. 51/65 in the Douglas County Surveyor's Office, by Marvin C. Ramsey, P.L.S. 404.
 1975 record course per survey filed M55-57 in the Douglas County Surveyor's Office, by Victor McLind, P.L.S. 934.

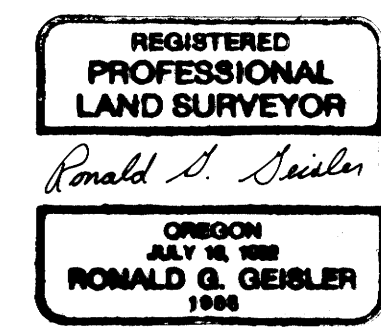
NOTES

- 1) ACAP refers to a 2-1/2" aluminum cap, set on a 2-1/2" x 30" aluminum, flared pipe.
- 2) ACIP refers to a 2-1/2" aluminum cap, set on a 1" x 30" iron pipe.
- 3) BCIP refers to a 2-1/2" brass cap, set on a 2-1/2" iron pipe.
- 4) All monuments set for government corners, are stamped according to the descriptions given in the 1973 B.L.M. Manual of Surveying Instructions, Chapter IV. Property corners are stamped, "PROP. COR., 1986". In addition, each monument set, is stamped "PLS 1988".
- 5) Ramsey's 1960 iron pipes have washers within, marked "RS 404".
- 6) All bearings to corner accessories were taken with a hand compass. Mean magnetic variation = 19°30'E. Distances to bearing trees are measured to the side and center of the tree, one foot above the root crown.
- 7) This survey was conducted with a Topcon GTS-2, and an AGA 76 geodimeter.

SURVEY NARRATIVE

This survey was conducted to establish property lines for Champion International Corporation, in Section 1, T28S, R8W, W.M. Basis of bearing was obtained from a sunshot taken in one leg of the control traverse.
 The West boundary of T28S, R7W was originally surveyed by Nathaniel Ford, in 1854. It was remeasured, and new corners set, by Hathorn in 1855. Hathorn also subdivided the remainder of Section 1, in 1855. In 1896, Heydon retraced the North line of Section 1. In 1924, Mensch executed a resurvey of the East boundary of T28S, R8W, Marvin Ramsey, PLS 404, subdivided the SW1/4 of Section 1, in 1960. (See C.S. 51/65 on file in the Douglas County Surveyor's Office) Victor McLind, PLS 934, subdivided the NW1/4 of Section 1, in 1975. (See M55-57 on file in the Douglas County Surveyor's Office)
 The section corner of Section 1, T27S, R8W and Section 31, T27S, R7W was set by the Douglas County Surveyor by traverse from the North line of R7-1/2 W. The E1/4 corner of Section 1 was proportioned by the G.L.O. Other exterior controlling corners used, were restored by the G.L.O., the Douglas County Surveyor, and Ramsey, based on original accessories found. Ramsey's 1960 proportioned position for the W1/4 corner of Section 1, was determined to be incorrect. I set a new corner at the correct proportional distance. In addition, I disregard Ramsey's 1960 position for the C1/4 corner, and McLind's 1975 position for the CN1/16 corner because they were based on Ramsey's incorrectly proportioned W1/4 corner. A new C1/4 corner was set at the intersection of lines connecting opposite 1/4 corners. Ramsey's 1960 position for the CS1/16 corner was accepted, since it had little effect on Champion's proportionate line. The section was then subdivided according to the 1973 B.L.M. Manual of Surveying Instructions. The CN1/16 corner was positioned at 20 chains proportionate measure.
 A private parcel of property in the SE1/4 of Section 1 was surveyed according to a description given in a warranty deed, reference no. 71-1504, as recorded in the Douglas County Clerk's Office. The West property line of the parcel was posted and flagged for approximately 235' to a driveway.
 All traverses run were closed loops, with a minimum acceptable error of closure of one part in 5,000. Property lines were posted with 5" steel fence posts, with attached "Champion" tags. Lines were also blazed and flagged.

RONALD G. GEISLER, Oregon P.L.S. 1988
 P.O. Box 1328
 Roseburg, Oregon 97470



- ① SECTION CORNER S1/S2 ONLY
 Found a 1961 Douglas County BCIP, and the following accessories:
 20" fir bears S2-1/2°W, 73.5'
 Closed face (1961)
 38" fir stump bears S40-1/2°E, 57.42'
 Chop marks visible on badly rotten stump (1960)
 36" laurel bears N14°E, 117.0' (rec. = 114.6')
 No scribing visible on double face (1961)
 New BT: 9" fir bears S29°E, 72.6'
 Scribed: T28S R8W S1 BT
- ② N1/4 CORNER S1
 Found a 1960 1-1/2" iron pipe set by Ramsey, and the following accessories:
 31" white oak bears N87°E, 218.5'
 Rotted face (original)
 44" black oak down and decaying (original)
 50" cedar bears S36°W, 63.3' (rec. = 57.4')
 Closed face (1960)
 New BT: 14" black oak bears S24°E, 101.6'
 Scribed: N1/4 S1 BT
- ③ SECTION CORNER S36, T27S, R8W / S31, T27S, R7W
 Found a 1961 Douglas County BCIP, and the following accessories:
 Scribe marks on a fir stump which has been destroyed and dragged out of position.
 New BT's: 4" fir bears N46°E, 34.4'
 Scribed: X BT
 8" fir bears N78°W, 47.9'
 Scribed: T27S R8W S36 BT

- ④ SECTION CORNER S1/S6, T28S, R7-1/2 W
 Found a 1924 G.L.O. 3-1/4" brass cap on a 3" iron pipe, and the following accessories:
 23" rotted fir stump, 3' tall, bears S12°W, 30.3' (rec. = 31.0') No scribing. (1924)
 25" rotted fir stump bears S29°E, 34.3'
 No scribing (1924)
 New BT's: 8" fir bears S6-1/2°E, 136.0'
 Scribed: T28S R7-1/2 W S6 BT
 8" fir bears S31°W, 198.3'
 Scribed: T28S R8W S1 BT
- ⑤ CN 1/16 CORNER S1
 Set on ACIP. McLind's 1975 5/8" iron rod bears S27°34'58"E, 2.06' from corner. Changed tags on 1975 BT's to correspond to new position, such that:
 18" black oak now bears S54°W, 93.1'
 Closed face
 21" sugar pine now bears S51°E, 153.5'
 Closed face
- ⑥ NE 1/16 CORNER S1
 Set on ACIP, and the following accessories:
 12" fir bears S24°W, 22.2'
 13" fir bears N51°W, 47.0'
 Both scribed: NE 1/16 S1 BT
- ⑦ 1/4 CORNER S2/S1
 Set on ACAP in a cultivated field. Ramsey's 1960 1-1/2" iron pipe bears S04°23'09"W, 15.88'. Set two new BT's:
 11" fir bears S74°W, 188.0'
 Scribed: 1/4 S2 BT
 9" oak bears S63°E, 143.4'
 Scribed: 1/4 S1 BT
 An unrecorded 1" iron pipe bears N87°47'28"E, 12.76' from corner.

SURVEY OF
 SEC. 1, T28S, R8W, W.M.
 DOUGLAS COUNTY, OREGON
 BY
 CHAMPION INTERNATIONAL CORPORATION

NOVEMBER 1985 - JANUARY 1986

R.G.G. COUNTY SURVEYORS FILE DATA
 DO NOT REMOVE FROM OFFICE