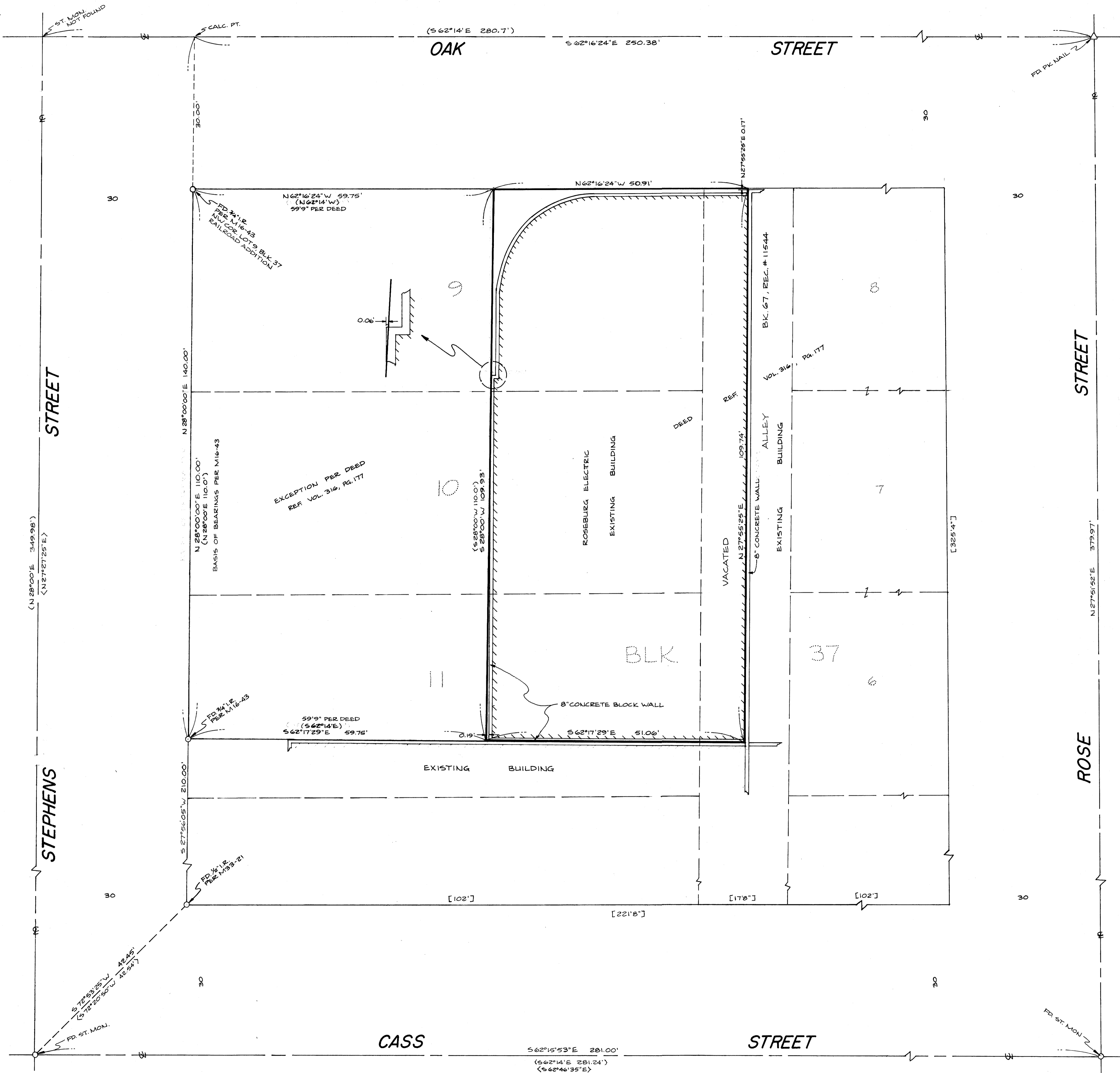


COUNTY SURVEYORS FILE DATA
DO NOT REMOVE FROM OFFICE

FILED CMO
RECEIVED
DEC 30 1985
COUNTY SURVEYOR
DOUGLAS COUNTY, ORE.
CMO



NARRATIVE:

PURPOSE: TO PROVIDE A LEGAL DESCRIPTION FOR THE BUILDING SHOWN ON THE ANNEXED MAP USING THE WESTERLY SIDE OF A CONCRETE WALL AS THE EASTERLY BOUNDARY AND THE REMAINING BOUNDARIES AS DESCRIBED IN BOOK 316 RECORDS VOL. 2, P. 10.

PROCEDURE: I FOUND AND TIED THE EXISTING MONUMENTS AS SHOWN ON THE ANNEXED MAP. I USED THE MONUMENTS SHOWN ON M16-43 AND M33-21 TO ESTABLISH THE EASTERLY R/W LINE OF STEPHENS STREET. I THEN PROJECTED THIS LINE THE RECORD DISTANCE TO ESTABLISH THE CENTER-LINE OF OAK STREET. I THEN ESTABLISHED THE SOUTHERLY R/W LINE OF OAK STREET TO ESTABLISH THE WESTERLY LINE OF THIS TRACT. I USED THE RECORD DISTANCES OF THE EXCEPTION DESCRIBED IN RECORDS NO. 31094 TO ESTABLISH THE EASTERLY LINE. I USED THE WESTERLY SIDE OF AN 8" CONCRETE WALL.

INSTRUMENTS USED WERE: LIETZ TM-20C AND DM-C2 EDM.

LEGEND

- OO FOUND MON. AS NOTED HEREON
- () RECORD DATA PER M16-43
- < > RECORD DATA PER M33-21
- [] RECORD DATA PER PLAT OF RAILROAD ADDITION VOL. 2, P. 10

REGISTERED
PROFESSIONAL
LAND SURVEYOR

OREGON
MAY 13, 1900
EUGENE A. BLOOM
492

COUNTY SURVEYORS FILE DATA
DO NOT REMOVE FROM OFFICE

SURVEY FOR DESCRIPTION IN THE NW 1/4 SEC. 19, T. 27 S., R. 5 W., W.M.	
FOR: ROSEBURG ELECTRIC RICK & PAM SKOPIK	SCALE: 1" = 10' DRAWN BY: DEL REVISED:
BY: AA SURVEYING SERVICE, INC. P.O. BOX 130 ROSEBURG, OR 97470	
DATE: DEC. 1985	DRAWING NUMBER: 605-85