

"A" EAST 1/16 CORNER SECTION 12  
 SET 2 1/2" x 30" ALUMINUM PIPE AND CAP. (PURPLE M.M. BURIED UNDER PIPE)  
 5" HEMLOCK, N75°E, 23.8' (SCRIBED/PAINTED RED)  
 6" FIR, N32°E, 14.0' (SCRIBED/PAINTED RED)

"B" C.N. 1/16 CORNER SECTION 12  
 SET 2 1/2" x 30" ALUMINUM PIPE AND CAP (PURPLE M.M. BURIED UNDER PIPE)  
 10" FIR, S08°W, 22.2' (SCRIBED/PAINTED RED)  
 12" FIR, N75°W, 23.1' (SCRIBED/PAINTED RED)

"C" N.E. 1/16 CORNER SECTION 12  
 SET 2 1/2" x 30" ALUMINUM PIPE AND CAP (PURPLE M.M. BURIED UNDER PIPE)  
 8" FIR, S69°E, 6.0' (SCRIBED/PAINTED RED)  
 10" FIR, S11°W, 9.9' (SCRIBED/PAINTED RED)

"D" C.E. 1/16 CORNER SECTION 12  
 SET 2 1/2" x 30" ALUMINUM PIPE AND CAP (PURPLE M.M. BURIED UNDER PIPE)  
 24" FIR, S15°E, 25.7' (SCRIBED/PAINTED RED)  
 28" FIR, S72°W, 18.7' (SCRIBED/PAINTED RED)

"E" CENTER 1/4 CORNER SECTION 12  
 SET 2 1/2" x 30" ALUMINUM PIPE AND CAP (PURPLE M.M. BURIED UNDER PIPE)  
 9" FIR, S59°W, 16.7' (SCRIBED/PAINTED RED)  
 20" FIR, N40°W, 19.9' (SCRIBED/PAINTED RED)

WEST 1/4 CORNER SECTION 12  
 FD. 1967 B.L.M. BRASS CAP  
 9" FIR, N24°W, 22.5' (SCAR VIS.), 1967 B.T.  
 12" FIR, S49°E, 48.3' (SCAR VIS.), 1967 B.T.

NORTH 1/4 CORNER SECTION 12  
 FD. 29" HEMLOCK, N32°E, 58.1' (SCAR VIS.), 1929 C.S.B.T.  
 48" DOWNED FIR, S05°W, 11.9' (BARK SCRIBED), 1929 C.S.B.T.  
 SET 2 1/2" x 30" ALUMINUM PIPE AND CAP (PURPLE M.M. BURIED UNDER PIPE)  
 6" HEMLOCK, S83°E, 9.5' (SCRIBED/PAINTED RED)

N.E. CORNER SECTION 12  
 FD. 1968 B.L.M. BRASS CAP  
 35" FIR, N06°W, 15.7' (SCAR VIS.), 1856 B.T.  
 44" FIR, S48°E, 29.4' (BARK SCRIBED), 1856 B.T.  
 58" FIR SNAG, S43°W, 19.4' (BARK SCRIBED), 1856 B.T.  
 22" HEMLOCK, N40°E, 49.4' (SCAR VIS.), 1962 C.S.B.T.  
 10" HEMLOCK, S21°E, 13.5' (SCAR VIS.), 1968 B.T.

COUNTY SURVEYORS FILE DATA  
 DO NOT REMOVE FROM OFFICE

FILED CM0  
 RECEIVED B  
 NOV 5 1985  
 COUNTY SURVEYOR  
 DOUGLAS COUNTY, OREGON  
 CM0

SURVEY OF  
 SECTION 12, T22S, R8W, W.M.  
 DOUGLAS COUNTY, OREGON  
 FOR  
 INTERNATIONAL PAPER COMPANY  
 BY

ROBERTS SURVEYING INC.  
 29 WEST 29TH STREET  
 EUGENE, OREGON 97405  
 SEPTEMBER 10, 1985

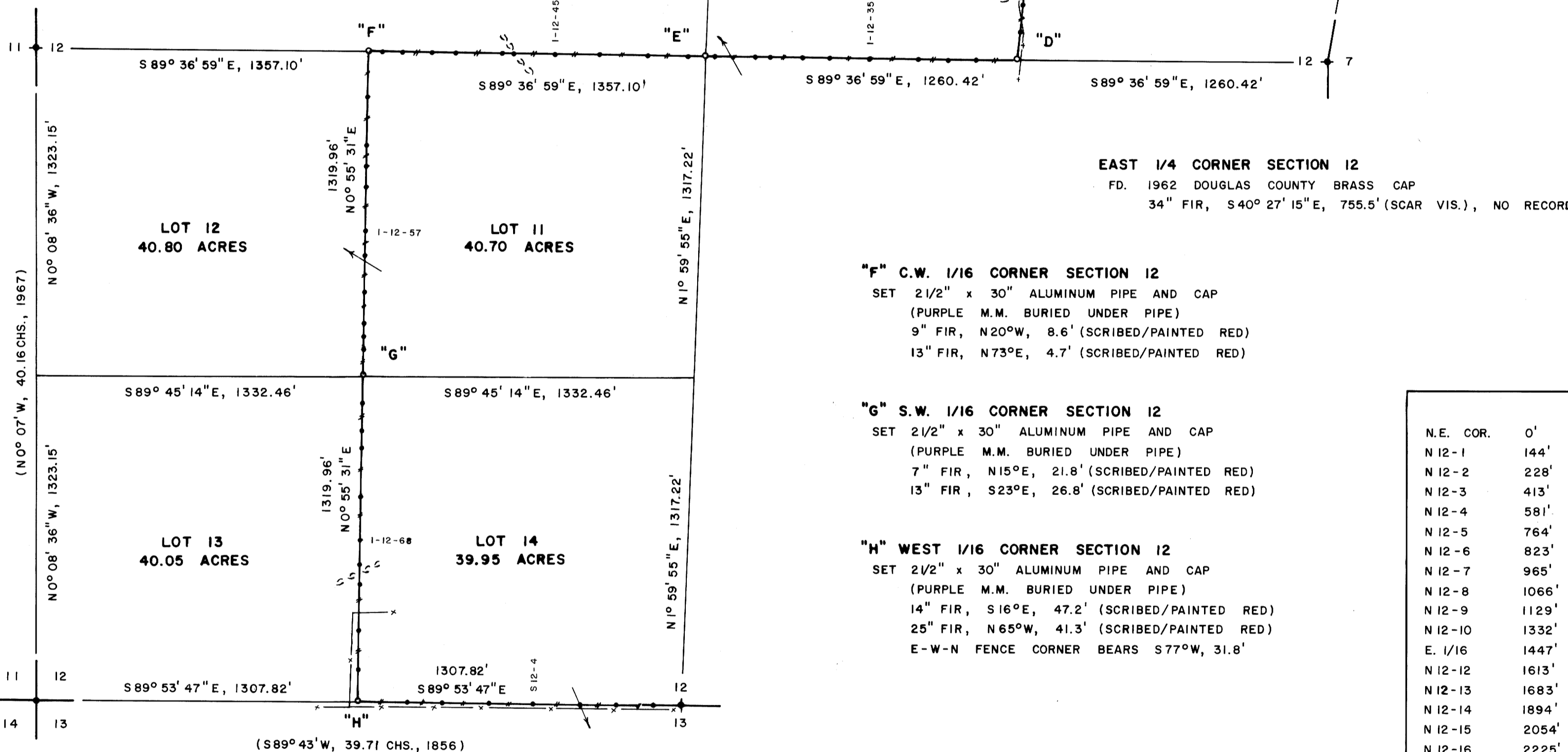
REGISTERED  
 PROFESSIONAL  
 LAND SURVEYOR

Les Roberts

OREGON  
 AUGUST 22, 1975  
 L. D. ROBERTS  
 1039

LEGEND

- CORNERS FOUND AND USED FOR CONTROL.
- o CORNERS SET, 2 1/2" x 30" ALUMINUM PIPE AND CAP. CAPS STAMPED S-T-R, DATE AND P.L.S. NO. 1039.
- LINES MARKED AND BLAZED THIS SURVEY.
- ( ) DATA OF RECORD, 1856 AND 1881 G.L.O. SURVEY. 1929 C.S. NO. M6-7 AND 1967-1968 B.L.M. SURVEY.
- (M.M.) INDICATES LOCATION OF BURIED MAGNETIC MARKERS. MARKERS ARE FLUORESCENT ORANGE IN COLOR AND ARE BURIED, 12" TO 18" DEEP, ALONG LINE AS SHOWN.
- BASIS OF BEARING, SOLAR OBSERVATION.
- ALL NEW B.T.'S ARE SCRIBED AND HAVE AN ALUMINUM WASHER STAMPED "P.L.S. 1039" NAILED TO LOWER BLAZE. SCRIBED BLAZES ARE PAINTED RED.
- DISTANCES TO B.T.'S ARE CENTER MEASURE.
- ALL NEW B.T.'S HAVE A 6" STEEL SPIKE DRIVEN INTO THE CENTER OF THE TREE TO SERVE AS A CHAINING POINT FOR MEASURED DISTANCES.
- SCALE 1" = 400'



"F" C.W. 1/16 CORNER SECTION 12  
 SET 2 1/2" x 30" ALUMINUM PIPE AND CAP (PURPLE M.M. BURIED UNDER PIPE)  
 9" FIR, N20°W, 8.6' (SCRIBED/PAINTED RED)  
 13" FIR, N73°E, 4.7' (SCRIBED/PAINTED RED)

"G" S.W. 1/16 CORNER SECTION 12  
 SET 2 1/2" x 30" ALUMINUM PIPE AND CAP (PURPLE M.M. BURIED UNDER PIPE)  
 7" FIR, N15°E, 21.8' (SCRIBED/PAINTED RED)  
 13" FIR, S23°E, 26.8' (SCRIBED/PAINTED RED)

"H" WEST 1/16 CORNER SECTION 12  
 SET 2 1/2" x 30" ALUMINUM PIPE AND CAP (PURPLE M.M. BURIED UNDER PIPE)  
 14" FIR, S16°E, 47.2' (SCRIBED/PAINTED RED)  
 25" FIR, N65°W, 41.3' (SCRIBED/PAINTED RED)  
 E-W-N FENCE CORNER BEARS S77°W, 31.8'

S.W. CORNER SECTION 12  
 FD. 1962 DOUGLAS COUNTY BRASS CAP  
 48" FIR SNAG, N70°W, 17.4' (FACE VIS.), 1856 B.T.  
 7" MAPLE, N80°W, 30.9' (SCAR VIS.), 1962 C.S.B.T.  
 12" MAPLE, S85°W, 45.2' (SCAR VIS.), 1962 C.S.B.T.  
 18" ALDER, S62°E, 34.7' (SCAR VIS.), 1962 C.S.B.T.  
 18" FIR, N53°E, 14.8' (SCAR VIS.), 1962 C.S.B.T.

SOUTH 1/4 CORNER SECTION 12  
 FD. 1962 DOUGLAS COUNTY BRASS CAP  
 15" OAK, S18°W, 43.4' (SCAR VIS.), 1962 C.S.B.T.  
 16" FIR, N09°W, 38.1' (SCAR VIS.), 1962 C.S.B.T.  
 E-W-N FENCE CORNER BEARS S60°W, 13.7'

NARRATIVE

I, LES ROBERTS, REGISTERED PROFESSIONAL LAND SURVEYOR DO CERTIFY THAT I HAVE CORRECTLY SURVEYED SECTION 12 IN ACCORDANCE TO THE MANUAL OF INSTRUCTION FOR THE SURVEY OF THE PUBLIC LANDS OF THE UNITED STATES. THE CENTER 1/4 CORNER WAS SET AT THE INTERSECTION OF THE N-S AND E-W CENTERLINES OF SECTION 12. THE EAST 1/16 CORNER BETWEEN SECTIONS 1 AND 12 WAS SET HALFWAY BETWEEN THE NORTH 1/4 CORNER AND THE N.E. SECTION CORNER AS SHOWN. THE WEST 1/16 CORNER BETWEEN SECTIONS 12 AND 13 WAS SET HALFWAY BETWEEN THE SOUTH 1/4 CORNER AND THE S.W. SECTION CORNER AS SHOWN. THE C.N. 1/16 CORNER WAS SET HALFWAY BETWEEN THE CENTER 1/4 CORNER AND THE NORTH 1/4 CORNER AS SHOWN. THE N.E. 1/16 CORNER AND THE S.W. 1/16 CORNER WERE SET AT THE INTERSECTION OF THE N-S AND E-W CENTERLINES OF THE N.E. 1/4 AND OF THE S.W. 1/4 RESPECTIVELY AS SHOWN. THE C.E. 1/16 CORNER AND THE C.W. 1/16 CORNER WERE SET HALFWAY BETWEEN THE CENTER 1/4 CORNER AND THE EAST 1/4 CORNER AND THE WEST 1/4 CORNER RESPECTIVELY AS SHOWN. A CLOSED MEANDER TRANSIT AND E.D.M. TRAVERSE WAS RUN BETWEEN ALL FOUND CORNERS AND USED FOR CONTROL. A CLOSED MEANDER TRANSIT AND E.D.M. TRAVERSE WAS RUN ALONG ALL BLAZED AND POSTED PROPERTY LINES. OFFSETS WERE COMPUTED FROM THIS MEANDER TRAVERSE TO THE TRUE PROPERTY LINE. PROPERTY LINES WERE MARKED WITH RED PAINTED BLAZES, RED RIBBON, YELLOW INTERNATIONAL PAPER PROPERTY LINE SIGNS, FLUORESCENT ORANGE MAGNETIC MARKERS AND 1/2" x 60" IRON REBAR WITH ALUMINUM CAPS, LOCATED AS SHOWN. IRON REBAR AND BURIED MAGNETIC MARKERS ARE REFERENCED BY A 3" x 3" ALUMINUM TAG NAILED TO A NEARBY TREE. TAG NOTES BEARING AND DISTANCE FROM TREE TO IRON ROD OR BURIED MAGNETIC MARKER.

LOCATION OF FENCE

1-12-26	WEST	7.6'	TO FC.
1-12-27	EAST	1.0'	TO FC.
1-12-28	WEST	2.1'	TO FC.
1-12-29	EAST	0.0'	TO FC.
1-12-30	EAST	7.0'	TO FC.
1-12-31	EAST	14.0'	TO FC.
1-12-71	WEST	17.4'	TO FC.
1-12-72	WEST	24.5'	TO FC.
W. 1/16	S77°W	31.8'	TO COR.
S12-1	SOUTH	7.0'	TO FC.
S12-2	SOUTH	8.0'	TO FC.
S12-3	SOUTH	9.7'	TO FC.
S12-4	SOUTH	10.7'	TO FC.
S12-5	SOUTH	10.0'	TO FC.
S12-6	SOUTH	9.3'	TO FC.
S12-7	SOUTH	8.8'	TO FC.
S. 1/4 COR	S60°W	13.7'	TO COR.

LOCATION OF MAGNETIC MARKERS

N.E. COR.	0'	WEST (FC. POST)	C.E. 1/16	0'	WEST (M.M. & FC. POST)
N 12-1	144'	WEST (M.M.)	1-12-32	164'	WEST (M.M.)
N 12-2	228'	WEST (M.M. & REBAR)	1-12-33	273'	WEST (M.M. & REBAR)
N 12-3	413'	WEST (M.M.)	1-12-34	393'	WEST (M.M.)
N 12-4	581'	WEST (M.M. & REBAR)	1-12-35	596'	WEST (M.M. & REBAR)
N 12-5	764'	WEST (M.M.)	1-12-36	753'	WEST (M.M.)
N 12-6	823'	WEST (M.M. & REBAR)	1-12-37	862'	WEST (M.M. & REBAR)
N 12-7	965'	WEST (M.M.)	1-12-38	1000'	WEST (M.M.)
N 12-8	1066'	WEST (M.M. & REBAR)	1-12-39	1052'	WEST (M.M.)
N 12-9	1129'	WEST (M.M.)	1-12-40	1226'	WEST (M.M.)
N 12-10	1332'	WEST (M.M.)	C. 1/4	1260'	WEST (M.M. & FC. POST)
E. 1/16	1447'	WEST (M.M. & FC. POST)	1-12-42	67'	WEST (M.M.)
N 12-12	1613'	WEST (M.M.)	1-12-43	223'	WEST (M.M. & REBAR)
N 12-13	1683'	WEST (M.M. & REBAR)	1-12-44	424'	WEST (M.M. & REBAR)
N 12-14	1894'	WEST (M.M. & REBAR)	1-12-45	605'	WEST (M.M.)
N 12-15	2054'	WEST (M.M.)	1-12-46	770'	WEST (M.M. & REBAR)
N 12-16	2225'	WEST (M.M. & REBAR)	1-12-47	818'	WEST (M.M.)
N 12-17	2386'	WEST (M.M.)	1-12-48	1005'	WEST (M.M.)
N 12-18	2565'	WEST (M.M. & REBAR)	1-12-49	1098'	WEST (M.M. & REBAR)
N 12-19	2729'	WEST (M.M.)	1-12-50	1219'	WEST (M.M.)
N 12-20	2799'	WEST (M.M.)	1-12-51	1297'	WEST (M.M.)
N. 1/4	2894'	WEST (M.M. & FC. POST)	C.W. 1/16	1357'	WEST (M.M. & FC. POST)
1-12-1	188'	SOUTH (M.M.)	1-12-53	192'	SOUTH (M.M.)
1-12-2	273'	SOUTH (M.M. & REBAR)	1-12-54	388'	SOUTH (M.M. & REBAR)
1-12-3	358'	SOUTH (M.M.)	1-12-55	473'	SOUTH (M.M.)
1-12-4	558'	SOUTH (M.M. & REBAR)	1-12-56	555'	SOUTH (M.M.)
1-12-5	742'	SOUTH (M.M.)	1-12-57	734'	SOUTH (M.M. & REBAR)
1-12-6	944'	SOUTH (M.M. & REBAR)	1-12-58	832'	SOUTH (M.M.)
1-12-7	1051'	SOUTH (M.M.)	1-12-59	987'	SOUTH (M.M.)
1-12-8	1135'	SOUTH (M.M.)	1-12-60	1107'	SOUTH (M.M. & REBAR)
1-12-9	1233'	SOUTH (M.M.)	1-12-61	1153'	SOUTH (M.M.)
C.N. 1/16	1295'	SOUTH (M.M. & FC. POST)	1-12-62	1206'	SOUTH (M.M.)
1-12-11	205'	EAST (M.M.)	S.W. 1/16	1320'	SOUTH (M.M. & FC. POST)
1-12-12	405'	EAST (M.M. & REBAR)	1-12-64	110'	SOUTH (M.M.)
1-12-13	601'	EAST (M.M.)	1-12-65	221'	SOUTH (M.M. & REBAR)
1-12-14	662'	EAST (M.M. & REBAR)	1-12-66	289'	SOUTH (M.M.)
1-12-15	859'	EAST (M.M. & REBAR)	1-12-67	489'	SOUTH (M.M. & REBAR)
1-12-16	1009'	EAST (M.M.)	1-12-68	664'	SOUTH (M.M.)
1-12-17	1110'	EAST (M.M. & REBAR)	1-12-69	763'	SOUTH (M.M. & REBAR)
1-12-18	1228'	EAST (M.M.)	1-12-70	845'	SOUTH (M.M.)
1-12-30	1354'	EAST (M.M. & FC. POST)	1-12-71	1032'	SOUTH (M.M. & REBAR)
N.E. 1/16	106'	SOUTH (M.M.)	1-12-72	1189'	SOUTH (M.M.)
1-12-20	178'	SOUTH (M.M. & REBAR)	W. 1/16	1320'	SOUTH (M.M. & FC. POST)
1-12-21	365'	SOUTH (M.M.)	S12-1	194'	EAST (M.M.)
1-12-22	449'	SOUTH (M.M.)	S12-2	340'	EAST (M.M. & REBAR)
1-12-23	507'	SOUTH (M.M. & REBAR)	S12-3	523'	EAST (M.M.)
1-12-24	701'	SOUTH (M.M. & REBAR)	S12-4	702'	EAST (M.M. & REBAR)
1-12-25	841'	SOUTH (M.M.)	S12-5	895'	EAST (M.M.)
1-12-26	920'	SOUTH (M.M.)	S12-6	1040'	EAST (M.M. & REBAR)
1-12-27	985'	SOUTH (M.M. & REBAR)	S12-7	1191'	EAST (M.M.)
1-12-28	1073'	SOUTH (M.M.)	S. 1/4	1308'	EAST (FC. POST)
1-12-29	1186'	SOUTH (M.M.)			
1-12-30	1297'	SOUTH (M.M. & FC. POST)			

COUNTY SURVEYORS FILE DATA  
 DO NOT REMOVE FROM OFFICE

U.S. File 63/18  
 MAP FILE M.90-74