

A SURVEY FOR LORRAINE WAMSLEY IN NE 1/4 OF SECTION 4, T23S, R5W, W.M. AND IN G.A. BURTS DONATION LAND CLAIM #48

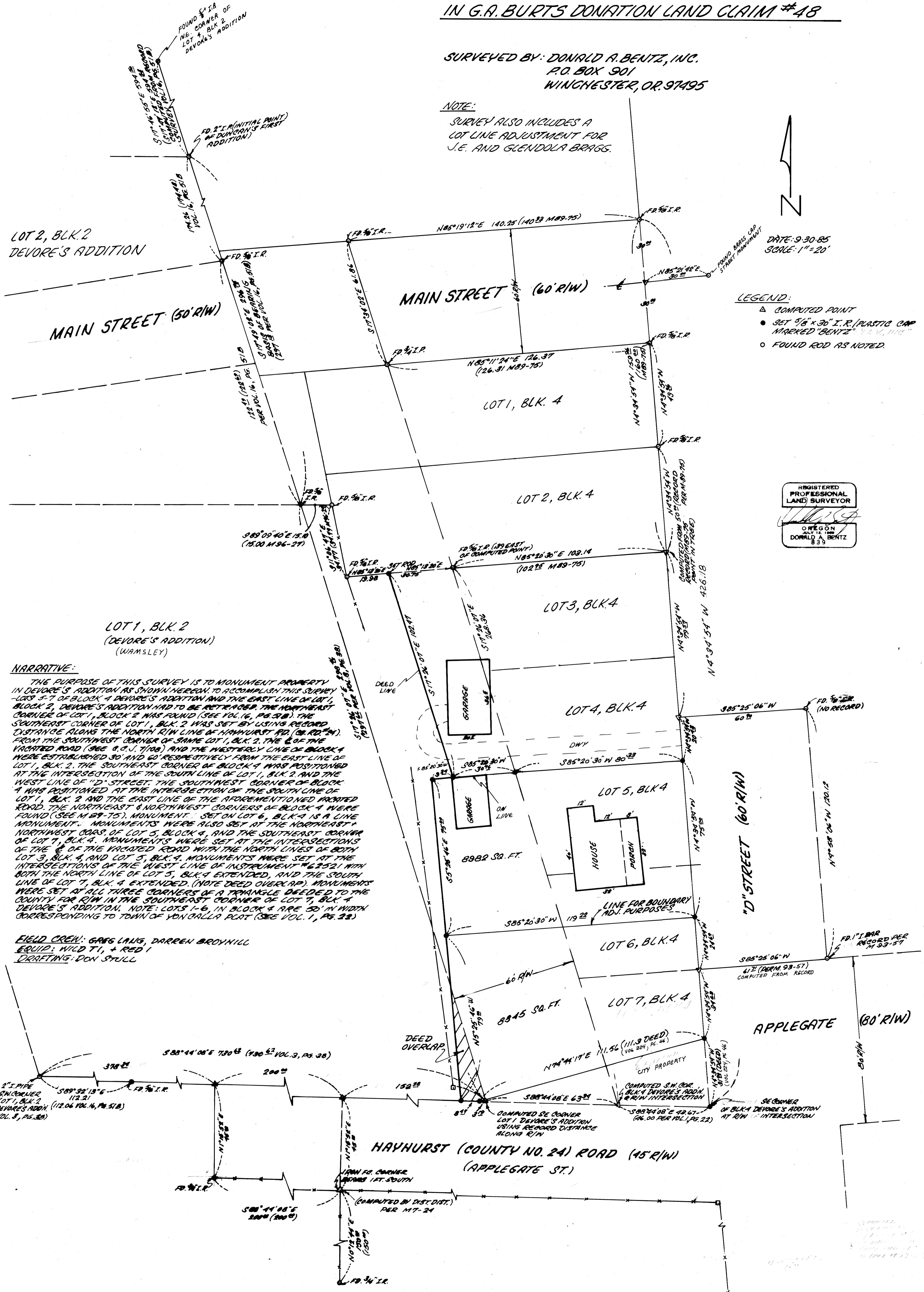
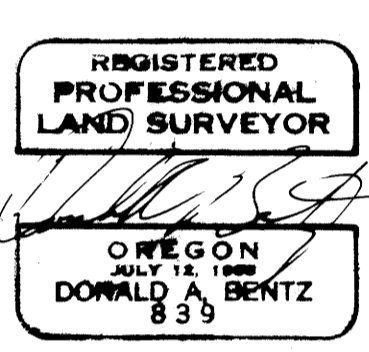
SURVEYED BY: DONALD A. BENTZ, INC.
P.O. BOX 901
WINCHESTER, OR. 971495

NOTE:
SURVEY ALSO INCLUDES A
LOT LINE ADJUSTMENT FOR
J.E. AND GLENDOLA BRASS.



DATE: 9-30-85
SCALE: 1" = 20'

- LEGEND:
- ▲ COMPUTED POINT
 - SET 5/8" x 30" I.R./PLASTIC CAP MARKED "BENTZ" 11/21/85
 - FOUND ROD AS NOTED



NARRATIVE:

THE PURPOSE OF THIS SURVEY IS TO MONUMENT PROPERTY IN DEVORE'S ADDITION AS SHOWN HEREIN TO ACCOMPLISH THIS SURVEY LOTS 5-7 OF BLOCK 4 DEVORE'S ADDITION AND THE EAST LINE OF LOT 1, BLOCK 2, DEVORE'S ADDITION HAD TO BE RETRACED. THE NORTHEAST CORNER OF LOT 1, BLOCK 2 WAS FOUND (SEE VOL. 6, PG. 38). THE SOUTHWEST CORNER OF LOT 1, BLK. 2 WAS SET BY USING RECORD DISTANCE ALONG THE NORTH R/W LINE OF HAYHURST RD. (OR. RD. #24) FROM THE SOUTHWEST CORNER OF SAME LOT 1, BLK. 2. THE E OF THE VACATED ROAD (SEE G.O.J. #108) AND THE WESTERLY LINE OF BLOCK 4 WERE ESTABLISHED 30' AND 60' RESPECTIVELY FROM THE EAST LINE OF LOT 1, BLK. 2. THE SOUTHWEST CORNER OF BLOCK 4 WAS POSITIONED AT THE INTERSECTION OF THE SOUTH LINE OF LOT 1, BLK. 2 AND THE WEST LINE OF "D" STREET. THE SOUTHWEST CORNER OF BLOCK 4 WAS POSITIONED AT THE INTERSECTION OF THE SOUTH LINE OF LOT 1, BLK. 2 AND THE EAST LINE OF THE AFOREMENTIONED VACATED ROAD. THE NORTHEAST & NORTHWEST CORNERS OF BLOCK 4 WERE FOUND (SEE M. 89-75). MONUMENT SET ON LOT 6, BLK. 4 IS A LINE MONUMENT. MONUMENTS WERE ALSO SET AT THE NORTHEAST & NORTHWEST CORNERS OF LOT 5, BLOCK 4, AND THE SOUTHWEST CORNER OF LOT 7, BLK. 4. MONUMENTS WERE SET AT THE INTERSECTIONS OF THE E OF THE VACATED ROAD WITH THE NORTH LINES OF BOTH LOT 3, BLK. 4 AND LOT 5, BLK. 4. MONUMENTS WERE SET AT THE INTERSECTIONS OF THE WEST LINE OF INSTRUMENT # 12521 WITH BOTH THE NORTH LINE OF LOT 5, BLK. 4 EXTENDED, AND THE SOUTH LINE OF LOT 7, BLK. 4 EXTENDED. (NOTE DEED OVERLAP). MONUMENTS WERE SET AT ALL THREE CORNERS OF A TRIANGLE DEEDED TO THE COUNTY FOR R/W IN THE SOUTHWEST CORNER OF LOT 7, BLK. 4 DEVORE'S ADDITION. NOTE: LOTS 1-6, IN BLOCK 4 ARE 50' IN WIDTH CORRESPONDING TO TOWN OF VON GALLA PLAT (SEE VOL. 1, PG. 22).

FIELD CREW: GREG LANG, DARREN BROWNILL
EQUIP: WILD T1, + RED 1
DRAFTING: DON STULL

MAP FILE M. 20 - 73