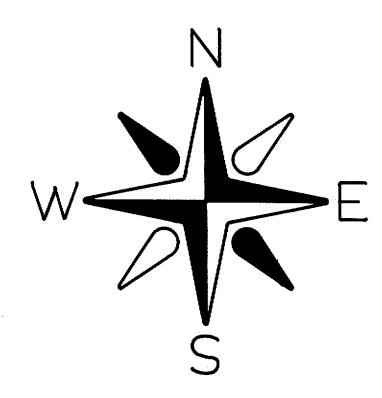


FILED CMO  
RECEIVED  
AUG 9 1985  
COUNTY SURVEYOR  
DOUGLAS COUNTY, OREGON  
CMO

LEGEND

- ◆ ACAP corner set this survey
- ⊙ ACIP corner set this survey
- ◇ corner found and used for control
- true corner position
- property line posted
- ( ) 1911 G.L.O. record course



SCALE: 1" = 500'

NOTES

- 1) ACAP refers to a 2-1/2" aluminum cap, set on a 2-1/2" x 30" aluminum, flared pipe.
- 2) ACIP refers to a 2-1/2" aluminum cap, set on a 1" x 30" iron pipe.
- 3) C.S. BCIP refers to a 2-1/2" brass cap, set on a 1" iron pipe by the Douglas County Surveyor's Office, with two exceptions. The SW and SE section corners of Sec. 20 were 1-1/2" iron pipes.
- 4) All monuments set are stamped according to the descriptions given in the 1973 B.L.M. Manual of Surveying Instructions, Chapter IV. In addition, each monument set, is stamped PLS 1988.
- 5) All bearings to corner accessories were taken with a hand compass. Mean magnetic variation = 19°45' E. Distances to bearing trees are measured to the side and center of the tree, one foot above the root crown.
- 6) This survey was run with a Topcon GTS-2, and an AGA 76 geodimeter.

SURVEY NARRATIVE

This survey was conducted to establish property corners and property lines for Champion International Corporation, in Section 30 and the South line of Section 20, T27S, R2W, W.M. Basis of bearing was obtained from a sunshot taken in one leg of the control traverse. The East boundary of T27S, R3W was originally surveyed by Samuel C. Flint, in 1882. Morris Wygant, in 1911, retraced the East boundary of T27S, R3W, and subdivided T27S, R2W.

Controlling corners used, were restored by the Douglas County Surveyor's Office, or Tom Shrum (LS 1706), based on original accessories found. In order to subdivide Sec. 30, three Quarter Corners were found. The W1/4 S30 was never established. Therefore, a retracement of the East boundary of T27S, R3W was necessary to connect the nearest identified corners. After a thorough search, the two controlling corners found and used, were the Section Corner S36/S31/S1/S6, and the Section Corner S24/S25. In addition, original Closing Corners at the N.W. and S.W. corners of Sec. 30 were found and used for control in the proportionate restoration of the township line. Since two angle points were involved in the 1911 retracement of T27S, R3W, the broken boundary method of proportioning, as discussed in the 1973 B.L.M. Manual of Surveying Instructions, was utilized to set the W1/4 S30, as well as the other lost section corner and quarter corners. New Closing Corners were set at the correct intersection with the East line of T27S, R3W. The original Closing Corners were stamped, A.M. A Witness Corner was set for the 1/4 Cor. S36/S31. Section 30 was then subdivided according to the 1973 B.L.M. Manual of Surveying Instructions. The calculated W1/16 corner between sections 19 and 30, and the CW1/16 S30 were positioned at 20 chains proportional measure. A Witness Corner was also set for the NE1/16 S30.

The S1/4 S20 was searched for, but not found. It was then single proportioned on line between the S.W. and S.E. corners of Sec. 20. The W1/16 S20/S29 was then set at midpoint between the S.W. Cor. Sec. 20 and the S1/4 S20.

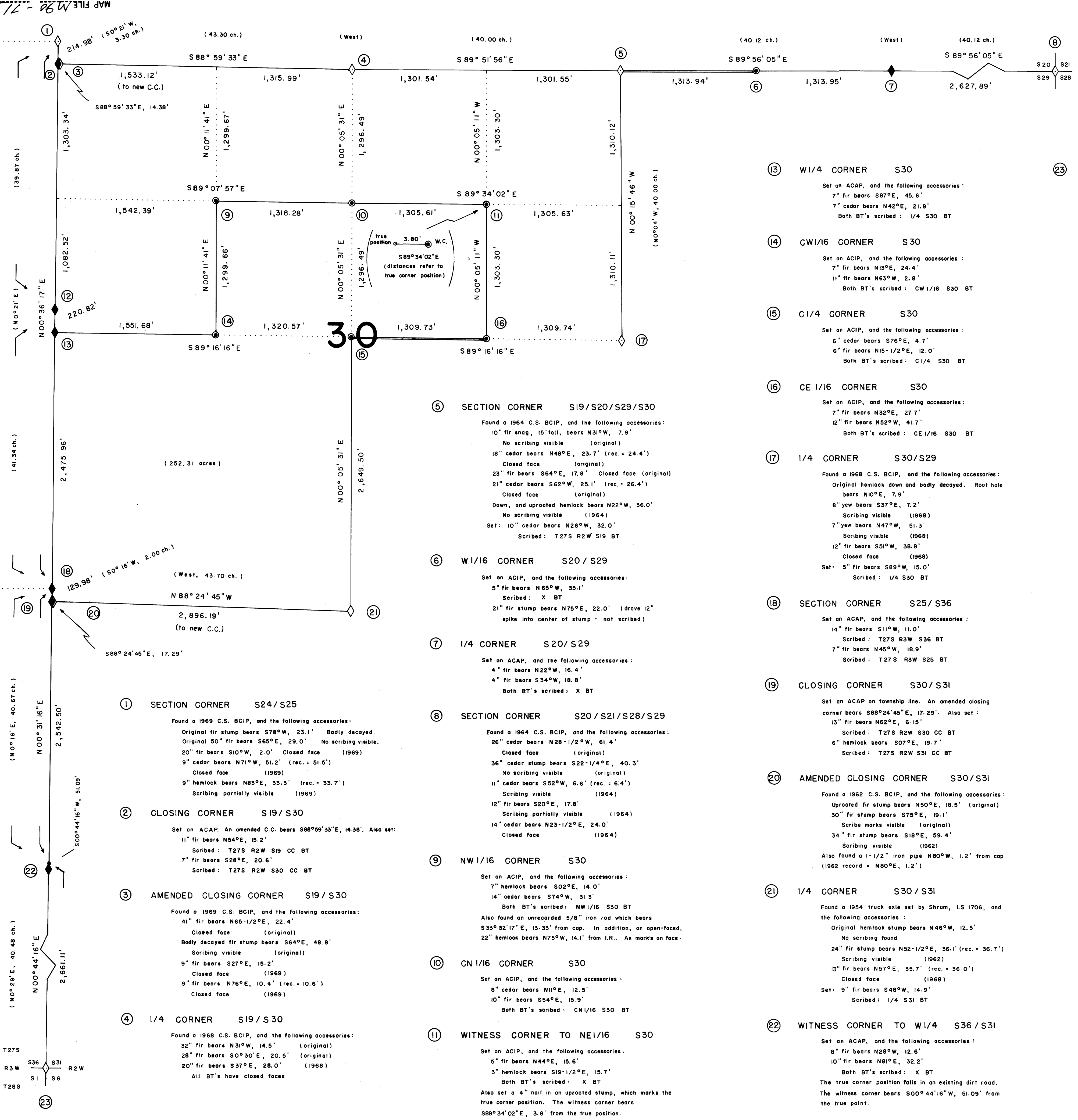
All traverses run were closed loops, with a minimum acceptable error of closure of one part in 5,000. Property lines were posted with 5" steel fence posts, with attached "Champion" tags. Lines were also blazed and flagged.

RONALD G. GEISLER, Oregon P.L.S. 1988  
P.O. Box 1328  
Roseburg, Oregon 97470

# SURVEY OF SEC. 30 and SOUTH LINE SEC. 20 T27S, R2W, W.M. DOUGLAS COUNTY, OREGON BY CHAMPION INTERNATIONAL CORPORATION

JUNE - JULY 1985

R.G.G.



- ⑤ SECTION CORNER S19/S20/S29/S30  
Found a 1964 C.S. BCIP, and the following accessories:  
10" fir snag, 15' tall, bears N31°W, 7.9'  
No scribing visible (original)  
18" cedar bears N48°E, 23.7' (rec. = 24.4')  
Closed face (original)  
23" fir bears S64°E, 17.8' Closed face (original)  
21" cedar bears S62°W, 25.1' (rec. = 26.4')  
Closed face (original)  
Down, and uprooted hemlock bears N22°W, 36.0'  
No scribing visible (1964)  
Set: 10" cedar bears N26°W, 32.0'  
Scribed: T27S R2W S19 BT
- ⑥ W1/16 CORNER S20/S29  
Set an ACIP, and the following accessories:  
5" fir bears N65°W, 35.1'  
Scribed: X BT  
21" fir stump bears N75°E, 22.0' (drove 12" spike into center of stump - not scribed)
- ⑦ 1/4 CORNER S20/S29  
Set an ACAP, and the following accessories:  
4" fir bears N22°W, 16.4'  
4" fir bears S34°W, 18.8'  
Both BT's scribed: X BT
- ⑧ SECTION CORNER S20/S21/S28/S29  
Found a 1964 C.S. BCIP, and the following accessories:  
26" cedar bears N28-1/2°W, 61.4'  
Closed face (original)  
36" cedar stump bears S22-1/4°E, 40.3'  
No scribing visible (original)  
11" cedar bears S52°W, 6.6' (rec. = 6.4')  
Scribing visible (1964)  
12" fir bears S20°E, 17.8'  
Scribing partially visible (1964)  
14" cedar bears N23-1/2°E, 24.0'  
Closed face (1964)
- ⑨ NW 1/16 CORNER S30  
Set an ACIP, and the following accessories:  
7" hemlock bears S02°E, 14.0'  
14" cedar bears S74°W, 31.3'  
Both BT's scribed: NW1/16 S30 BT  
Also found an unrecorded 5/8" iron rod which bears S33°32'17"E, 13.33' from cap. In addition, an open-faced, 22" hemlock bears N75°W, 14.1' from I.R. Ax marks on face.
- ⑩ CN 1/16 CORNER S30  
Set an ACIP, and the following accessories:  
8" cedar bears N11°E, 12.5'  
10" fir bears S54°E, 15.9'  
Both BT's scribed: CN1/16 S30 BT
- ⑪ WITNESS CORNER TO NE1/16 S30  
Set an ACIP, and the following accessories:  
5" fir bears N44°E, 15.6'  
3" hemlock bears S19-1/2°E, 15.7'  
Both BT's scribed: X BT  
Also set a 4" nail in an uprooted stump, which marks the true corner position. The witness corner bears S89°34'02"E, 3.8' from the true position.
- ⑫ E1/4 CORNER S25  
Set an ACAP, and the following accessories:  
2" hemlock bears N88°W, 11.1'  
3" fir bears S18°W, 19.2'  
Both BT's scribed: X BT
- ⑬ W1/4 CORNER S30  
Set an ACAP, and the following accessories:  
7" fir bears S87°E, 45.6'  
7" cedar bears N42°E, 21.9'  
Both BT's scribed: 1/4 S30 BT
- ⑭ CW1/16 CORNER S30  
Set an ACIP, and the following accessories:  
7" fir bears N13°E, 24.4'  
11" fir bears N63°W, 2.8'  
Both BT's scribed: CW1/16 S30 BT
- ⑮ C1/4 CORNER S30  
Set an ACIP, and the following accessories:  
6" cedar bears S76°E, 4.7'  
6" fir bears N15-1/2°E, 12.0'  
Both BT's scribed: C1/4 S30 BT
- ⑯ CE 1/16 CORNER S30  
Set an ACIP, and the following accessories:  
7" fir bears N32°E, 27.7'  
12" fir bears N52°W, 41.7'  
Both BT's scribed: CE1/16 S30 BT
- ⑰ 1/4 CORNER S30/S29  
Found a 1968 C.S. BCIP, and the following accessories:  
Original hemlock down and badly decayed. Root hole bears N10°E, 7.9'  
8" yew bears S37°E, 7.2'  
Scribing visible (1968)  
7" yew bears N47°W, 51.3'  
Scribing visible (1968)  
12" fir bears S51°W, 38.8'  
Closed face (1968)  
Set: 5" fir bears S89°W, 15.0'  
Scribed: 1/4 S30 BT
- ⑱ SECTION CORNER S25/S36  
Set an ACAP, and the following accessories:  
14" fir bears S11°W, 11.0'  
Scribed: T27S R3W S36 BT  
7" fir bears N45°W, 18.9'  
Scribed: T27S R3W S25 BT
- ⑲ CLOSING CORNER S30/S31  
Set an ACAP on township line. An amended closing corner bears S88°24'45"E, 17.29'. Also set:  
13" fir bears N62°E, 6.15'  
Scribed: T27S R2W S30 CC BT  
6" hemlock bears S07°E, 19.7'  
Scribed: T27S R2W S31 CC BT
- ⑳ AMENDED CLOSING CORNER S30/S31  
Found a 1962 C.S. BCIP, and the following accessories:  
Uprooted fir stump bears N50°E, 18.5' (original)  
30" fir stump bears S78°E, 19.1'  
Scribe marks visible (original)  
34" fir stump bears S18°E, 59.4'  
Scribing visible (1962)  
Also found a 1-1/2" iron pipe N80°W, 1.2' from cap (1962 record = N80°E, 1.2')
- ㉑ 1/4 CORNER S30/S31  
Found a 1954 truck axle set by Shrum, LS 1706, and the following accessories:  
Original hemlock stump bears N46°W, 12.5'  
No scribing found  
24" fir stump bears N52-1/2°E, 36.1' (rec. = 36.7')  
Scribing visible (1962)  
13" fir bears N57°E, 35.7' (rec. = 36.0')  
Closed face (1968)  
Set: 9" fir bears S48°W, 14.9'  
Scribed: 1/4 S31 BT
- ㉒ WITNESS CORNER TO W1/4 S36/S31  
Set an ACAP, and the following accessories:  
8" fir bears N28°W, 12.6'  
10" fir bears N81°E, 32.2'  
Both BT's scribed: X BT  
The true corner position falls in an existing dirt road. The witness corner bears S00°44'16"W, 51.09' from the true point.