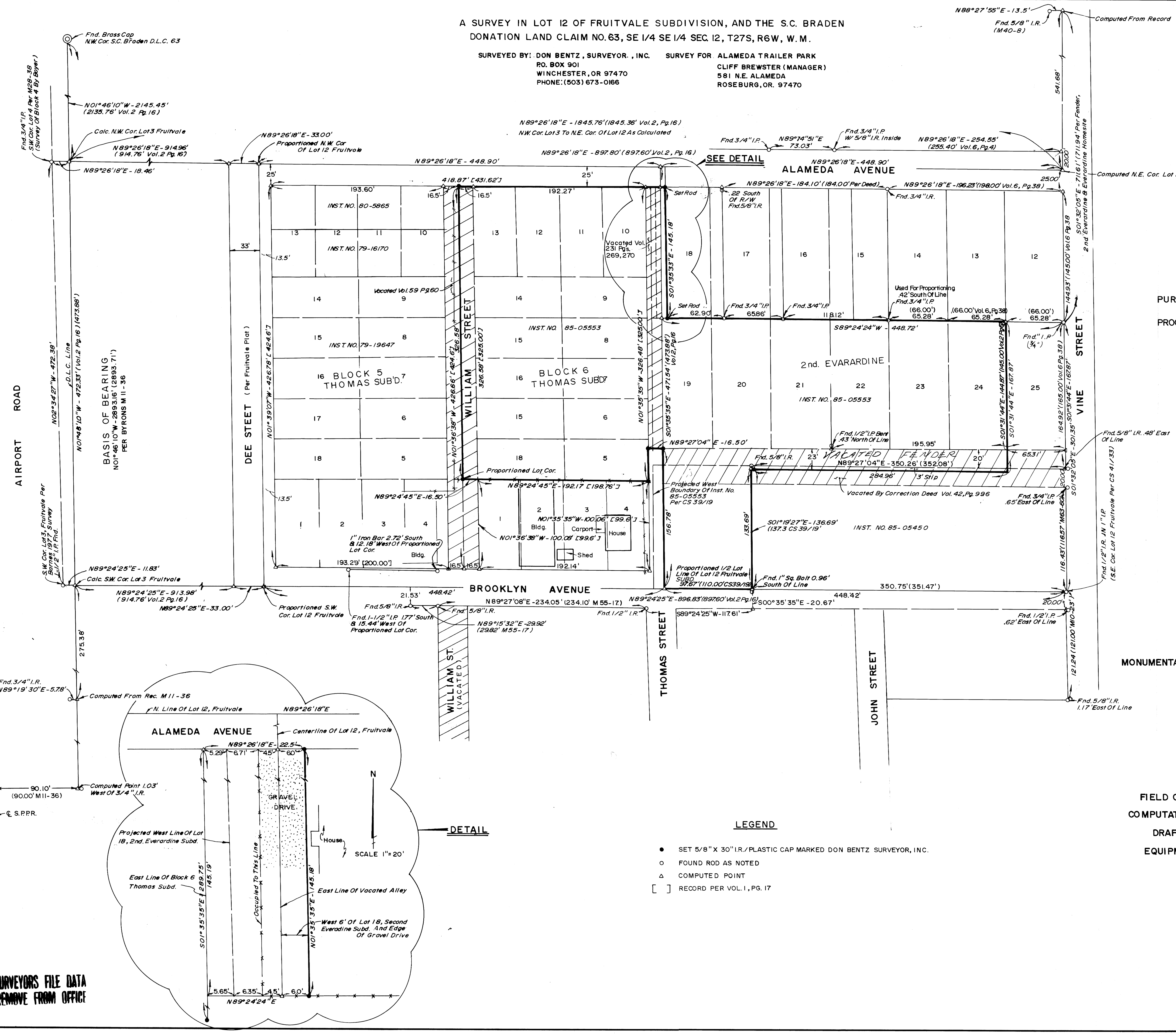
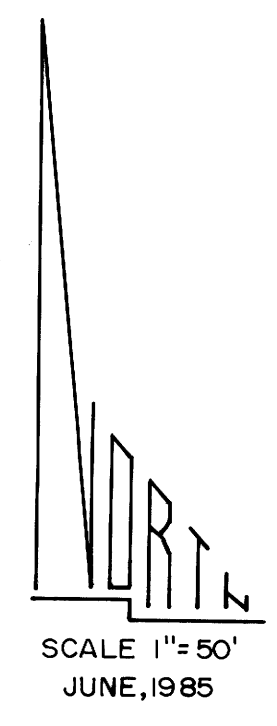


A SURVEY IN LOT 12 OF FRUITVALE SUBDIVISION, AND THE S.C. BRADEN DONATION LAND CLAIM NO.63, SE 1/4 SE 1/4 SEC. 12, T27S, R6W, W. M.

SURVEYED BY: DON BENTZ, SURVEYOR, INC. SURVEY FOR ALAMEDA TRAILER PARK  
PO. BOX 901 WINCHESTER, OR 97470 PHONE: (503) 673-0166  
CLIFF BREWSTER (MANAGER) 581 N.E. ALAMEDA ROSEBURG, OR. 97470

COUNTY SURVEYORS FILE DATA DO NOT REMOVE FROM OFFICE

FILED & RECEIVED JUN 27 1985 COUNTY SURVEYOR DOUGLAS GAYLOR



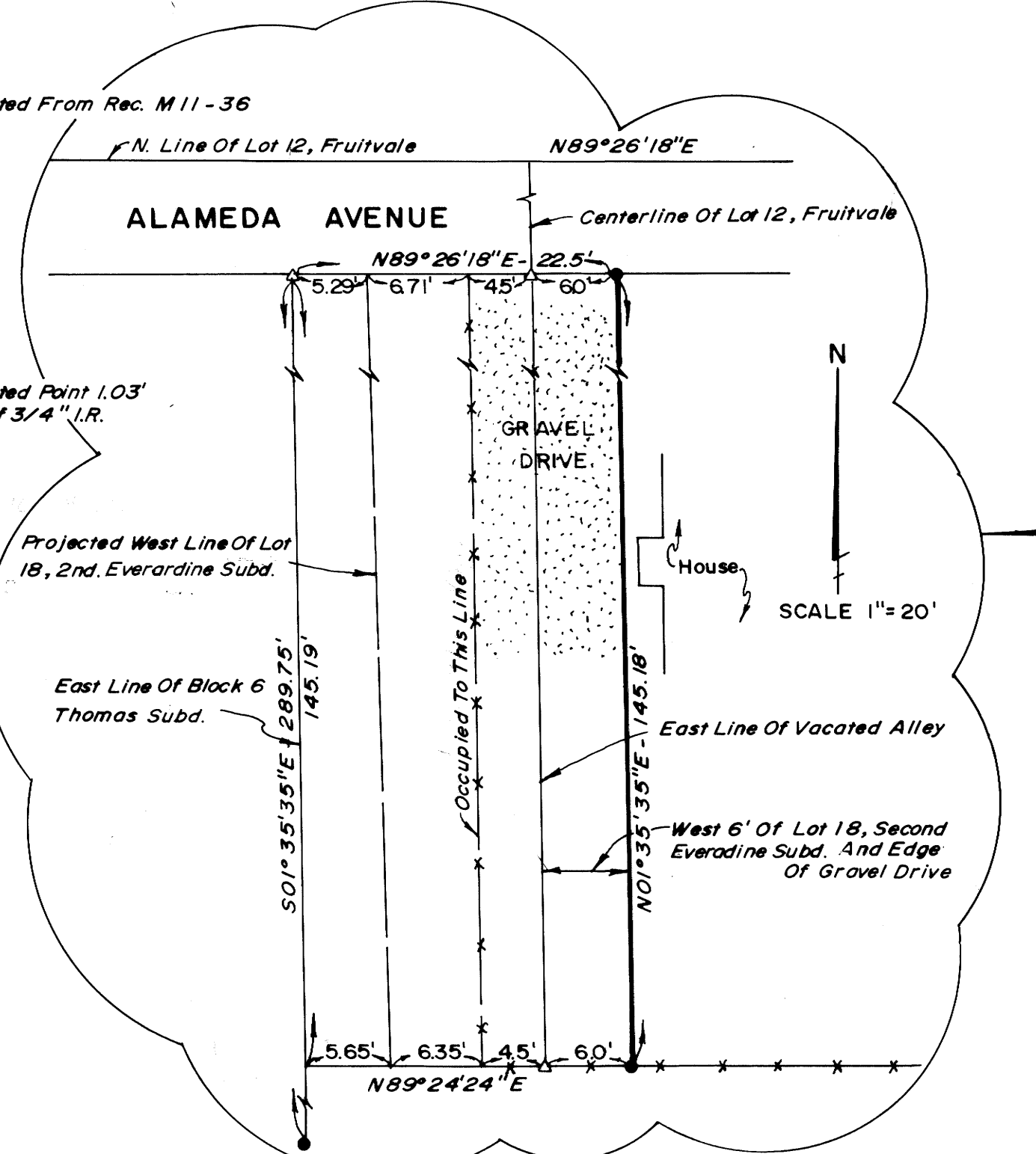
PURPOSE: TO SURVEY AND MONUMENT A PORTION OF INSTRUMENT NO. 85-05553.

PROCEDURE: TO BEGIN THIS SURVEY, IT WAS DETERMINED BY RESEARCH WE HAD TO SPLIT LOT 12 OF FRUITVALE PLAT (RECORDED IN VOL. 2, PG. 16) INTO EAST AND WEST HALFS. THE WEST LINE OF S.C. BRADEN D.L.C. WAS DETERMINED TO BE THE WEST LINE OF THE FRUITVALE PLAT, DUE TO THE FACT THAT THE SAID PLAT IS DESCRIBED WITHIN THE D.L.C. THE WEST LINE OF FRUITVALE WAS THEN POSITIONED FROM BYRONS M11-36 SURVEY OF THE D.L.C. LINE USING THE N.W. CORNER OF S.C. BRADEN D.L.C. NO. 63 AND 5.78 FEET FROM THE MONUMENT AS SHOWN. NOTE: (MATCHES BYRONS CALL OF 90.00 FEET TO THE RAILROAD TRACTS) NEXT, THE NORTHWEST AND SOUTHWEST CORNERS OF LOT 3 OF FRUITVALE PLAT WERE POSITIONED BY INTERSECTING THE WEST LINE OF D.L.C. NO. 63 AND LINES PROJECTING EASTERLY FROM FOUND IRON PIPES PER RECORD SURVEYS M65-58 AND M28-38 (THESE PIPES WERE NOTED AS THE SOUTHWEST AND NORTHWEST CORNERS OF LOT 3, FRUITVALE). THE SOUTHEAST CORNER OF LOT 12, FRUITVALE WAS FOUND AND ACCEPTED. THE NORTHEAST CORNER OF LOT 12 WAS POSITIONED BY PROPORTION USING THE CLOSEST FOUND MONUMENTS TO THE NORTH AND SOUTH (ALONG THE WEST SIDE OF VINE STREET). BY INVERTING FROM THE NORTHEAST CORNER OF LOT 12, FRUITVALE TO THE NORTHWEST CORNER OF LOT 3, FRUITVALE I FOUND THE MEASURED DISTANCE TO BE 1845.76 FEET MATCHING CLOSELY A RECORD OF 1845.36 FEET. LIKEWISE, THE MEASURED DISTANCE FROM THE SOUTHWEST CORNER OF SAID LOT 3 TO THE SOUTHEAST CORNER OF SAID LOT 12 MATCHED RECORD VERY CLOSELY. NEXT I WAS ABLE TO POSITION LOTS 3 AND 12 OF FRUITVALE BY PROPORTION. I PROPORTIONED BLOCKS 5 AND 6 OF THOMAS SUBDIVISION INSIDE THE WEST 1/2 OF LOT 12 FRUITVALE PLAT, GIVING ALL DEDICATED PROPERTY FULL WIDTH. [NOTE: THE WEST 1/2 OF SAID LOT 12 IS NARROW IN EAST-WEST WIDTH (448.87 FEET MEASURED COMPARED TO THE RECORD 461 FEET 7-1/2 INCHES OF THE THOMAS SUBDIVISION PLAT) CAUSING A SIGNIFICANT SHIFT FROM THE DEED LOCATIONS AND THAT OCCUPIED BY THE OWNERS AS SHOWN HEREON.] SECOND EVERARDINE HOMESITES, BY OWNERSHIP RIGHTS CAN ONLY EXTEND TO THE WEST LINE OF THE EAST 1/2 OF LOT 12 FRUITVALE, HOWEVER, AS DESCRIBED ON THE PLAT (VOL. 6, PG. 38) IT OVERLAPS INTO THE WEST 1/2 OF SAID LOT 12. [NOTE: SEE BLOWUP. THIS ALSO CAUSES A SIGNIFICANT SHIFT FROM THE DEED LOCATION OF THE EAST LINE OF THE WEST 6 FEET OF LOT 18, SECOND EVERARDINE HOMESITES AND THE USAGE LINES SHOWN HEREON AS OCCUPIED BY THE OWNER TO THE EAST OF SAID LINE.]

MONUMENTATION: MONUMENTS WERE SET AT TWO INTERSECTIONS WITH THE CENTERLINE OF THE VACATED WILLIAMS STREET - ONE ON THE SOUTH RIGHT-OF-WAY OF ALAMEDA AVENUE AND THE OTHER ON THE EXTENSION OF THE SOUTH LINE OF LOT 18, BLOCK 6 OF THOMAS SUBDIVISION.  
A MONUMENT WAS SET WHERE THE EAST LINE OF BLOCK 6 INTERSECTS AN EXTENSION OF THE NORTH LINE OF THE VACATED FENDER AVENUE.  
A MONUMENT WAS SET AT THE PROPORTIONED SOUTHEAST CORNER OF LOT 5, BLOCK 6, THOMAS SUBDIVISION.  
A MONUMENT WAS SET WHERE THE NORTH LINE OF FENDER AVENUE INTERSECTS THE NORTH-SOUTH CENTERLINE OF LOT 12, FRUITVALE.  
MONUMENTS WERE SET AT TWO INTERSECTIONS WITH THE EAST LINE OF THE WEST 6 FEET OF LOT 18, SECOND EVERARDINE SUBDIVISION - ONE ON THE SOUTH LINE OF ALAMEDA AVENUE AND THE OTHER ON THE SOUTH LINE OF LOT 18, SECOND EVERARDINE SUBDIVISION.

FIELD CREW: JIM ARTMAN, DAVE DELATTE, GREG LANG  
COMPUTATIONS: GREG LANG, DON BENTZ  
DRAFTING: JERRY HUGGINS  
EQUIPMENT: WILD T1 AND RED I DISTANCE METER

- LEGEND
- SET 5/8" X 30" I.R./PLASTIC CAP MARKED DON BENTZ SURVEYOR, INC.
  - FOUND ROD AS NOTED
  - △ COMPUTED POINT
  - [ ] RECORD PER VOL. 1, PG. 17



COUNTY SURVEYORS FILE DATA DO NOT REMOVE FROM OFFICE

REGISTERED PROFESSIONAL LAND SURVEYOR DONALD A. BENTZ 839