

COUNTY SURVEYORS FILE DATA
DO NOT REMOVE FROM OFFICE

A SURVEY FOR ROSEBURG SCHOOL DISTRICT #4

IN NE 1/4 OF SECTION 23, T27S, R6W, W.M.

SURVEYED BY DON BENTZ
1205 SE COURT STREET,
ROSEBURG, OREGON, 97440

FILED CMO
RECEIVED *fl*

MAR 14 1985

COUNTY SURVEYOR
DOUGLAS COUNTY, ORE.
CMO

HARVARD AVENUE

(BY PROJECTION) (173.3)
584°37'E 173.30

(Record 584°41'E)
584°37'E 232.27

290.48 (290.23)
50°49'W 792.58

(Fd. 1" Bolt)
50°49'W 792.58

See detail below

290.48 (290.23)

584°37'E 232.27

584°37'E 173.30

584°37'E 173.30

584°37'E 173.30

584°37'E 173.30

584°37'E 173.30

584°37'E 173.30

584°37'E 173.30

584°37'E 173.30

584°37'E 173.30

584°37'E 173.30

584°37'E 173.30

584°37'E 173.30

584°37'E 173.30

584°37'E 173.30

584°37'E 173.30

584°37'E 173.30

584°37'E 173.30

584°37'E 173.30

584°37'E 173.30

584°37'E 173.30

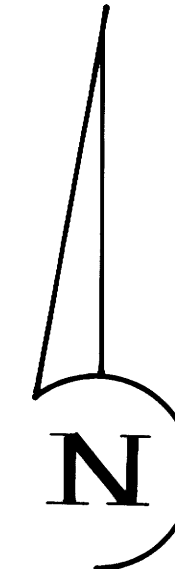
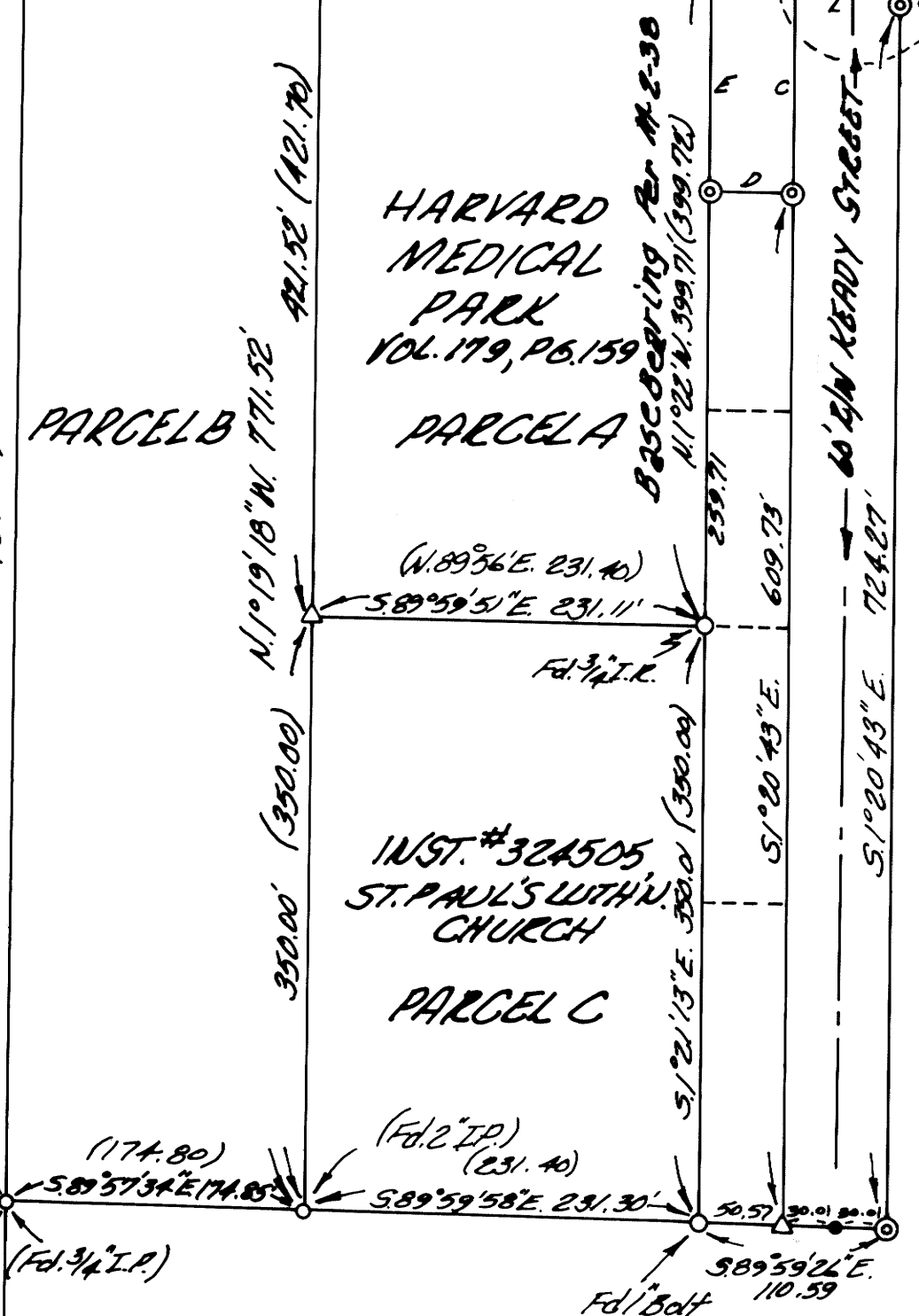
584°37'E 173.30

584°37'E 173.30

584°37'E 173.30

584°37'E 173.30

Fd. Brass Cap Mk'd. Co. Surv. Office,
From which SW corner of a dining hall bears N. 27° W. 33.0'
a 3" spruce bears S 46° E 46.0' (not marked)



SCALE: 1" = 100'

DATE: MARCH 1985

- ⊙ F.D. ROD - 5/8" x 30" I.R. WITH CAP BENTZ SURVEY INC.
- F.D. ROD - AS INDICATED
- △ COMPUTED POINT
- SET 5/8" x 30" I.R. WITH CAP BENTZ SURVEY INC.

METHODIST
CHURCH
VOL. 82, P. 699
(VOL. 124, P. 664)

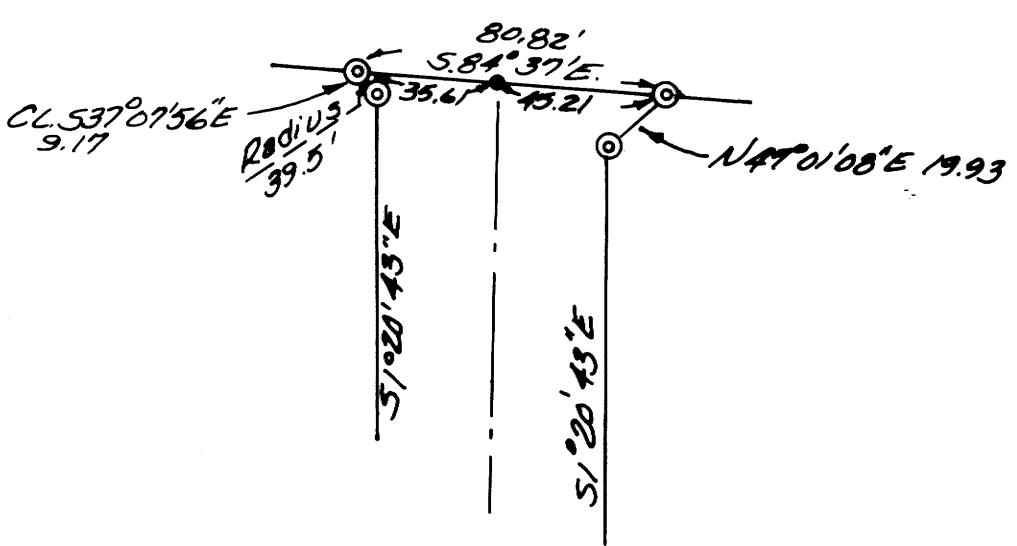
N 1° 09' 43" W 1747.98 (1748.40)

960.08 (960.50)

Fd. 1/2" I.P.

NARRATIVE: THE TWO MONUMENTS SET ON THIS SURVEY ARE FOR THE PURPOSE OF ESTABLISHING THE CENTERLINE OF KEADY STREET. THESE MONUMENTS WERE POSITIONED BY INTERSECTING THE SAID CENTERLINE WITH THE LINES BETWEEN EXISTING PINS AS SHOWN.

EQUIPMENT USED - WILD T1 & EED 1 DISTANCE METER
FIELD CREW - DAVE DELATIE & GREG LANG
DRAFTING - MIKE RADCLIFFE



DETAIL, INTERSECTION AT HARVARD
SCALE: 1" = 50'

A- 584°37'E	45.71
B- CL 537°07'56"E	9.17 (39.5' radius)
C- 51°20'43"E	128.39
D- N89°53'48"E	50.72
E- 51°22'E	140.00
F- 584°37'E	35.41
G- N47°01'08"E	19.93
H- 51°20'43"E	15.00
I- 584°37'E	15.00
J- 584°37'E	163.95
K- 584°37'E	5.40
L- 51°20'43"E	6.81
M- 584°37'E	45.21

REGISTERED
PROFESSIONAL
LAND SURVEYOR

OREGON
JULY 12, 1969
DONALD A. BENTZ
839

COUNTY SURVEYORS FILE DATA
DO NOT REMOVE FROM OFFICE