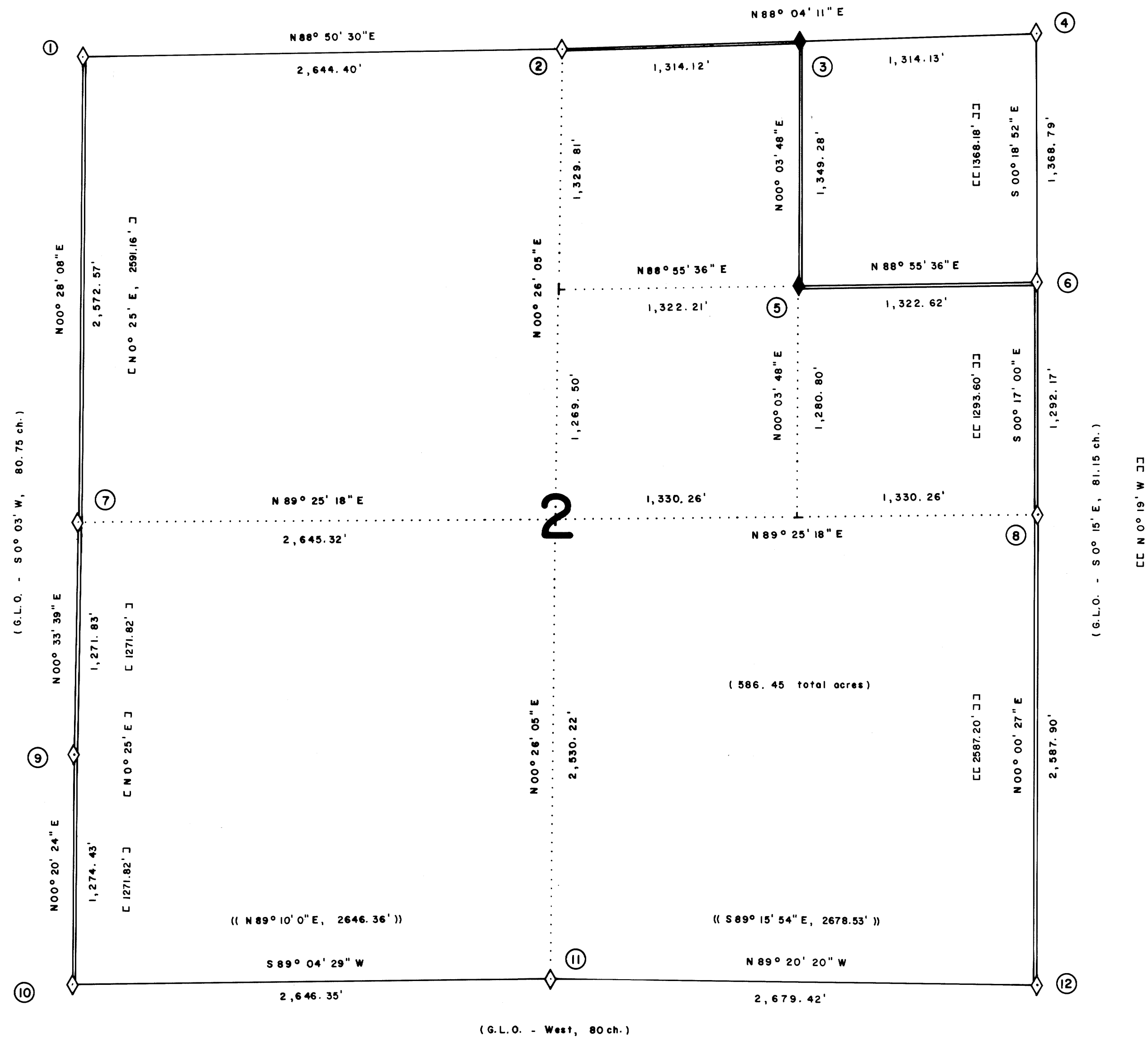


(G.L.O. - East, 80 ch.)



(G.L.O. - West, 80 ch.)

① SECTION CORNER S34/S35/S2/S3
 Found a 1957 B.L.M. BCIP with the original corner stone partially buried alongside it, and the following accessories:
 33" fir stump bears S75°W, 37.6' (original)
 closed face
 36" down and uprooted fir bears N68°W, 36'
 closed face (original)
 16" madrone bears S82°E, 55.1' (rec. = 55.4')
 rotted face (1913 original)
 21" fir bears N25-1/2°E, 25.7'
 closed face (1957)
 17" fir bears S29-1/4°W, 56.9' (rec. = 57.4')
 closed face (1957)
 15" fir bears N76°W, 74.3' (rec. = 73.9')
 closed face (1957)
 13" down and decaying fir bears S43°E, 49.5'
 no scribing found (1957)
 20" fir bears S75°E, 20.2'
 closed face (1967)

② 1/4 CORNER S35/S2
 Found a 1967 C.S. BCIP, and the following accessories:
 40" fir snag, 20' tall, bears N4°W, 29.7'
 Scribing visible on open face (1913 original)
 5" fir, down and decaying, bears N63°W, 9.2'
 Scribing visible on open face (1967)
 12" fir bears S11°W, 3.1'
 Closed face (1967)

Set new BT:
 6" fir bears N38°W, 40.8'
 Scribed: 1/4 S35 BT

③ E1/16 CORNER S35/S2
 Set ACIP, and the following accessories:
 7" fir bears N49°E, 13.1'
 Scribed: E1/16 S35 BT
 5" fir bears S68°W, 3.2'
 Scribed: E1/16 S2 BT

④ SECTION CORNER S35/S36/S1/S2
 Found a 1967 C.S. BCIP, and the following accessories:
 23" fir bears S30°W, 16.4' (rec. = 15.8' to face)
 Scribe mark visible (original)
 Original BT obliterated by Mensch in 1916, now a stump, bears N14°W, 9.2'
 21" fir bears N39-1/2°E, 11.9'
 Scribing partially visible (1913)
 15" fir bears N4°E, 6.0'
 closed face (1967)
 24" fir bears S19°W, 19.7'
 closed face (1967)
 17" fir bears S79-1/2°E, 88.7'
 closed face (1967)

⑤ NE 1/16 CORNER S2
 Set ACIP in mound of stone, and the following accessories:
 10" fir bears N55°E, 13.2'
 Scribed: NE 1/16 S2 BT
 5" fir bears S34°E, 18.65'
 Scribed: NE 1/16 S2 BT

⑥ N1/16 CORNER S2/S1
 Found a 1979 B.L.M. BCIP, and the following accessories:
 24" fir stump bears N60°E, 9.8'
 Scribed: N1/16 S1 BT (1979)
 7" fir bears S58-1/2°W, 25.4' (rec. = 26.4')
 closed face (1979)

⑦ 1/4 CORNER S3/S2
 Found a 1957 B.L.M. BCIP, and the following accessories:
 14" cedar bears N86°E, 35.8' (rec. = 36.3')
 closed face (1957)
 12" cedar bears S34°E, 57.4'
 closed face (1957)
 18" fir bears S71°W, 5.3'
 closed face (1968)

⑧ 1/4 CORNER S2/S1
 Found a 1979 B.L.M. BCIP, and the following accessories:
 13" fir bears S58-1/2°W, 12.25' (rec. = 12.9')
 scribe marks partially visible (1979)
 18" fir bears S29°E, 19.4' (rec. = 19.8')
 closed face (1979)

⑨ S1/16 CORNER S3/S2
 Found a 1957 B.L.M. BCIP, and the following accessories:
 22" cedar bears S37°E, 32.3'
 closed face (1957)
 51" fir bears S66-1/2°W, 66.7'
 well-healed face (1957)
 13" white fir (rec. = hemlock) bears N63°W, 32.7' (rec. = 33.2')
 closed face (1968)

⑩ SECTION CORNER S3/S2/S11/S10
 Found a 1957 B.L.M. BCIP, and the following accessories:
 24" cedar bears N59°W, 49.2' (rec. = 49.5')
 scribe marks visible (1905 original)
 41" fir stump bears N19°E, 56.0' (rec. = 54.8')
 scribe marks found in chopped face (1905 original)
 30" fir stump bears S47°E, 62.9' (rec. = S50°E, 62.0' to face)
 scribe marks visible on opened face (1905 original)
 15" hemlock (rec. = fir) bears N57-1/2°W, 22.3' (rec. = 21.8' to face)
 closed face (1957)
 13" fir bears N60°E, 57.6' (rec. = 57.4')
 closed face (1957)
 15" cedar bears S25°E, 19.8' (rec. = S28-1/2°E)
 closed face (1957)
 6" down and decayed pine bears S27°W, 18.5'
 scribe marks visible (1957)
 13" hemlock bears S22°W, 29.7'
 closed face (1962)

⑪ 1/4 CORNER S2/S11
 Found a 1962 D.C. BCIP, and the following accessories:
 45" fir bears N10°E, 8.6'
 closed face (original)
 Double 10" maples bear S5°E, 8.6' at position of original BT (rec. = N5°E)
 12" hemlock bears N62°W, 22.0'
 closed face (1962)
 13" hemlock bears S15°E, 18.5'
 closed face (1962)

⑫ SECTION CORNER S2/S1/S12/S11
 Found a 1962 D.C. BCIP in a mound of stone, and the following accessories:
 Root hole with down cedar lying nearby, bears N20°W, 15.8'
 no marks found (original)
 29" fir bears S39°W, 36.05' (rec. = 35.6')
 closed face (1905)
 31" fir bears S79°E, 30.4'
 closed face (1905)
 24" fir bears N6°W, 11.9' (rec. = 11.3')
 closed face (1968)
 8" yaw bears N35°E, 26.4' (rec. = 27.1')
 scribing visible (1968)
 22" fir bears S17°E, 31.0'
 closed face (1968)
 15" cedar bears South, 14.0'
 blazed, but not scribed (no record when set)

LEGEND

◊ corner set this survey
 ◊ corner found and used for control
 — property line posted
 () 1882 G.L.O. record course
 C C 1957 B.L.M. dependent resurvey record course
 CC CC 1979 B.L.M. dependent resurvey record course
 (()) 1978 record course per M70-16, a survey filed in the Douglas County Surveyor's Office

FILED *BS*
 RECEIVED *BS*
 MAY 15 1984
 COUNTY SURVEYOR
 DOUGLAS COUNTY, ORE. *BS*

SCALE: 1" = 500'

NOTES

- 1) ACIP refers to a 2-1/2" aluminum cap set on a 7/8" x 36" iron pipe.
- 2) B.L.M. BCIP refers to a 3" brass cap set on a 2-1/2" galvanized iron pipe.
- 3) C.S. BCIP refers to a 2-1/2" brass cap set on a 1-1/2" galvanized iron pipe by the Douglas County Surveyor's Office.
- 4) All monuments set are stamped according to the descriptions given in the 1973 B.L.M. Manual of Surveying Instructions, Chapter IV. In addition, each monument set, is stamped PLS 1988.
- 5) All bearings to corner accessories were taken with a hand compass. Mean magnetic variation = 19°45' E.
- 6) Distances to bearing trees are measured to the side and center of the tree, one foot above the root crown.
- 7) This survey was run with a Topcon GTS-2.

SURVEY NARRATIVE

This survey was conducted to establish the property line for Champion International Corporation, in Section 2, T27S, R2W, W.M., Douglas County, Oregon. Basis of bearing was obtained from a sunshot taken in one leg of the control traverse.

Section 2 was originally surveyed by Samuel C. Flint, in 1882. Charles Roberts retraced the south line in 1905. Portions of the south boundary of T26S, R2W were retraced by Charles Collier in 1913. Fred Mensch, in 1916, again retraced portions of the south boundary of T26S, R2W. A dependent resurvey of portions of the north boundary and subdivisional lines in T27S, R2W was executed by Harold D. Corbin, in 1957. The B.L.M., in 1979, made a dependent resurvey of the east line of Section 2.

Controlling corners used, were set by the B.L.M. or the Douglas County Surveyor's Office, based on original accessories found. There were two exceptions. The W1/4 and E1/4 corners of Section 2 were single proportioned by the B.L.M. after failing to find original evidence to verify their positions. The location of the proportioned W1/4 corner appears to be out of position by 10.6' based on this survey. However, the B.L.M. has used the corner to subdivide Section 3, T27S, R2W. In addition, two private surveyors have also utilized the W1/4 corner in establishing property surveys in Section 3, T27S, R2W. (See C.S. 58/163 and C.S. 55/352, on file in the Douglas County Surveyor's Office) Since no calls to physical land features were made in the original notes, and no original evidence remains to fix the corner location, I accept the B.L.M.'s position.

The section was then subdivided according to the 1973 B.L.M. Manual of Surveying Instructions. The CN1/16 was calculated at 20 chains proportionate measure from the south.

All traverses run were closed loops, with a minimum acceptable error of closure of one part in 4,000. Property lines were posted with 5' steel fence posts with attached "Champion" tags. Line was also blazed and flagged.

RONALD G. GEISLER
 Oregon P.L.S. 1988
 P.O. Box 1328
 Roseburg, Oregon 97470

**SURVEY OF
 SEC. 2, T27S, R2W, W.M.
 DOUGLAS COUNTY, OREGON
 BY
 CHAMPION INTERNATIONAL CORPORATION**

MARCH - APRIL 1984

R.G.G.

REGISTERED
 PROFESSIONAL
 LAND SURVEYOR
Ronald G. Geisler
 OREGON
 JULY 16, 1982
 RONALD G. GEISLER
 1988