

NORTH 1/4 CORNER SECTION 34

FD. 1953 G.L.O. BRASS CAP
 50" FIR, S59°W, 76.4'(SCAR VIS.), 1953 B.T.
 6" ALDER, N16°E, 13.6'(SCRIBE VIS.), 1967 B.T.

EAST 1/16 CORNER NORTH LINE

FD. 1983 B.L.M. BRASS CAP IN SOLID ROCK FACE
 16" FIR, N87°E, 96.2'(SCRIBE VIS.), 1983 B.T.
 18" FIR, S47°E, 64.4'(SCRIBE VIS.), 1983 B.T.

N.E. CORNER SECTION 34

FD. 1953 G.L.O. BRASS CAP & 1967 FENCE POST
 18" FIR, S11°W, 57.4'(SCAR VIS.), 1953 B.T.
 25" FIR, N45°W, 50.2'(SCAR VIS.), 1953 B.T.
 25" FIR, S84°E, 25.2'(SCAR VIS.), 1953 B.T.
 30" FIR, N83°E, 27.6'(SCAR VIS.), 1953 B.T.

**COUNTY SURVEYORS FILE DATA
 DO NOT REMOVE FROM OFFICE**

FILED *BS*
 RECEIVED *BS*
 APR 11 1984

COUNTY SURVEYOR
 DOUGLAS COUNTY, OREGON

"A" N.E. 1/16 CORNER

SET 2 1/2" BRASS CAP IN SOLID ROCK
 18" FIR, S11°W, 35.0'(SCRIBED/PAINTED)
 50" FIR, N77°W, 71.4'(SCRIBED/PAINTED)

"B" NORTH 1/16 CORNER

SET 2" x 36" ALUMINUM PIPE AND CAP
 BURIED PURPLE M.M. UNDER PIPE
 34" FIR, N80°E, 35.8'(SCRIBED/PAINTED)
 53" FIR, N33°W, 11.5'(SCRIBED/PAINTED)

"C" CENTER 1/4 CORNER

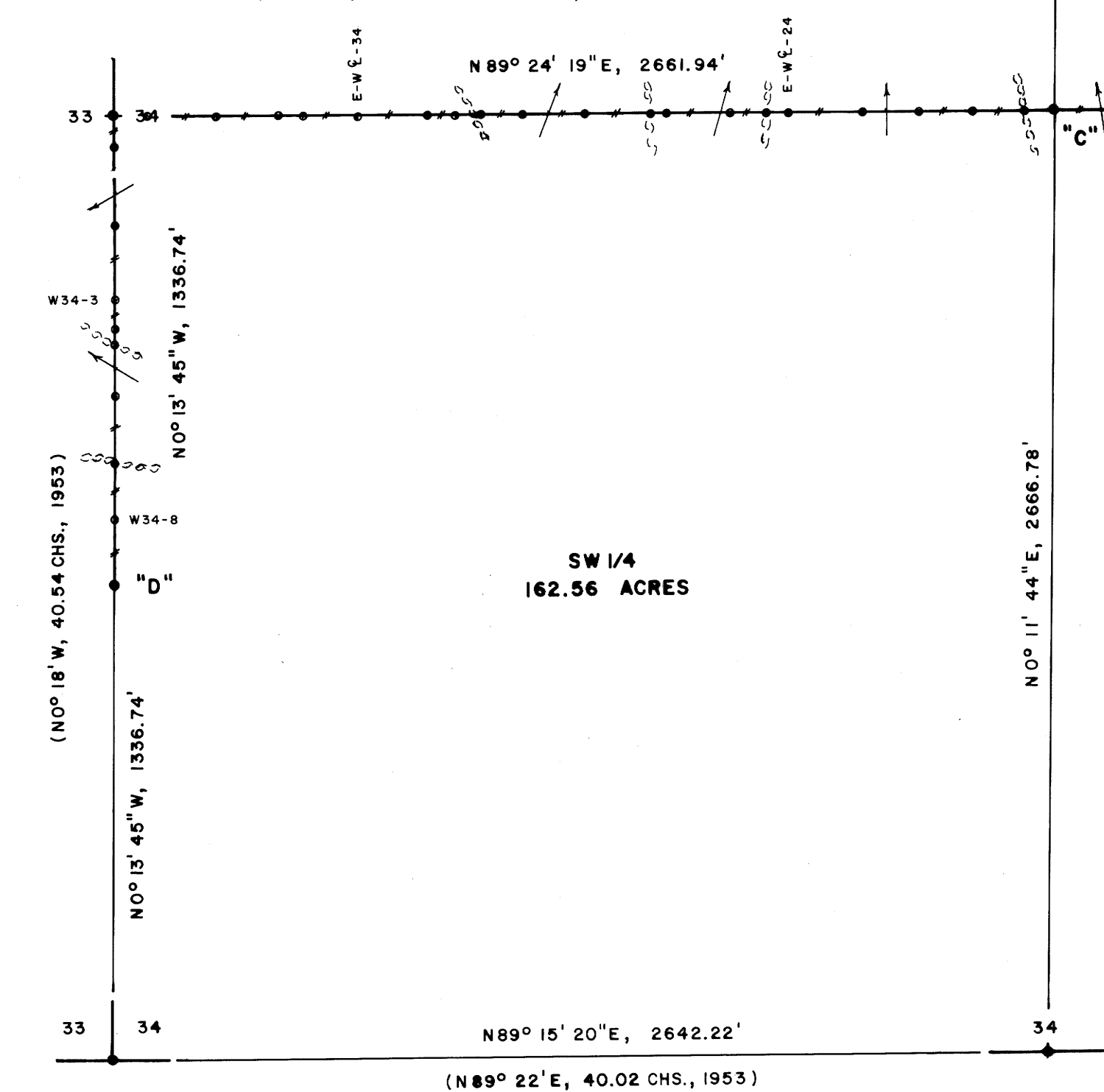
SET 2 1/2" BRASS CAP IN SOLID ROCK
 23" HEMLOCK, N47°W, 31.0'(SCRIBED/PAINTED)
 SET R.R. SPIKE IN SIDE OF 24" FIR STUMP
 S01°W, 17.1' TO SPIKE.

"D" SOUTH 1/16 CORNER

SET 2" x 36" ALUMINUM PIPE AND CAP
 BURIED PURPLE M.M. UNDER PIPE
 6" MAPLE, N19°E, 30.4'(SCRIBED/PAINTED)
 SET R.R. SPIKE IN SIDE OF 18" FIR STUMP
 S12°W, 70.8' TO SPIKE

WEST 1/4 CORNER SECTION 34

FD. 1953 G.L.O. BRASS CAP
 53" CEDAR, N81°W, 67.9'(NO MARKS), 1877 B.T.
 10" HEMLOCK STUB, N75°E, 15.5'(SCRIBE VIS.), 1953 B.T.
 19" MAPLE, N74°W, 14.1'(SCAR VIS.), 1953 B.T.

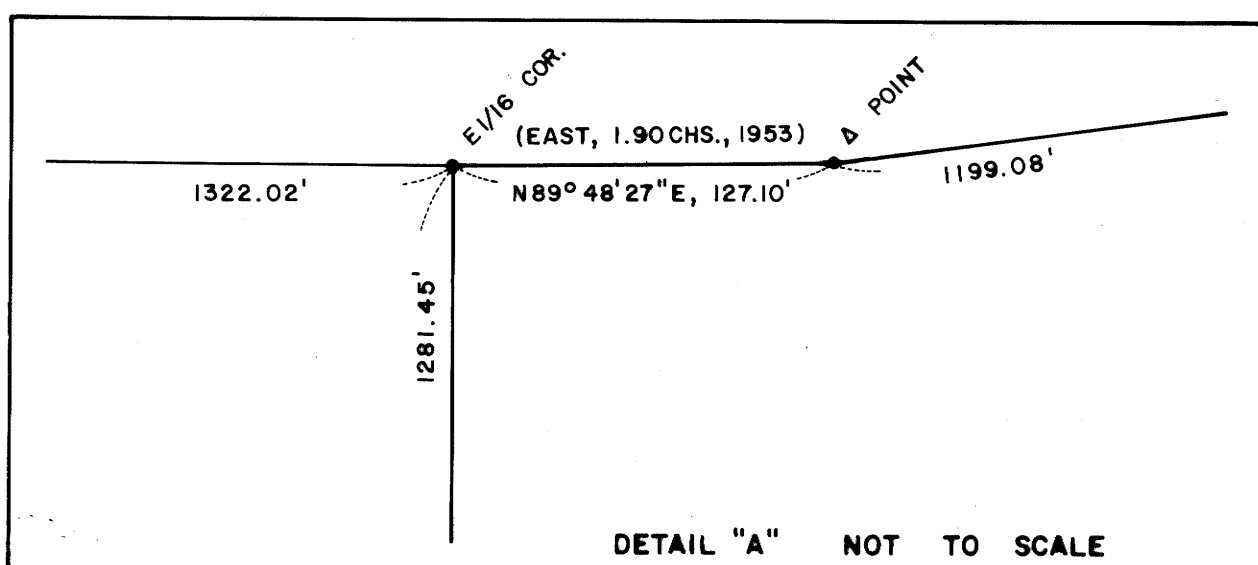


S.W. CORNER SECTION 34

FD. 1953 G.L.O. BRASS CAP
 BURIED PURPLE M.M. UNDER PIPE
 50" FIR STUMP, N13°W, 31.8'(SCAR VIS.), 1877 B.T.
 60" CEDAR STUMP, N88°E, 32.0'(SCRIBE VIS.), 1953 B.T.

SOUTH 1/4 CORNER SECTION 34 ONLY

FD. 1953 G.L.O. BRASS CAP
 BURIED PURPLE M.M. UNDER PIPE
 25" FIR STUMP, N49°E, 33.7'(SCAR VIS.), 1953 B.T.
 34" CEDAR STUMP, S46°E, 76.6'(SCRIBE VIS.), - B.T.



NW 1/4 NE 1/4
 39.44 ACRES

NE 1/4 NE 1/4
 39.84 ACRES

SW 1/4 NE 1/4
 40.36 ACRES

SE 1/4 NE 1/4
 40.88 ACRES

SW 1/4
 162.56 ACRES

EAST 1/4 CORNER SECTION 34

FD. 1953 G.L.O. BRASS CAP
 11" FIR, S18°E, 15.6'(SCAR VIS.), 1953 B.T.
 14" FIR, N41°W, 2.0'(SCAR VIS.), 1953 B.T.

LOCATION OF 1/2" IRON RODS

E. 1/4 COR.	WEST (M.M.)	E. 1/4 COR.	NORTH (M.M.)
E-Wℓ-1	178'	E34-1	39'
E-Wℓ-2	384'	E34-2	108'
E-Wℓ-3	581'	E34-3	337'
E-Wℓ-4	705'	E34-4	414'
E-Wℓ-5	873'	E34-5	603'
E-Wℓ-6	947'	E34-6	772'
E-Wℓ-7	1119'	E34-7	970'
E-Wℓ-8	1307'	E34-8	1172'
E-Wℓ-9	1392'	E34-9	1238'
E-Wℓ-10	1552'	N1/6 COR.	1344'
E-Wℓ-11	1610'	E34-11	70'
E-Wℓ-12	1730'	E34-12	271'
E-Wℓ-13	1900'	E34-13	437'
E-Wℓ-14	2076'	E34-14	633'
E-Wℓ-15	2174'	E34-15	821'
E-Wℓ-16	2300'	E34-16	987'
E-Wℓ-17	2381'	E34-17	1062'
E-Wℓ-18	2506'	E34-18	1246'
C1/4 COR.	2674'	N.E. COR.	1344'
E-Wℓ-20	73'	N34-1	84'
E-Wℓ-21	220'	N34-2	244'
E-Wℓ-22	374'	N34-3	379'
E-Wℓ-23	535'	N34-4	603'
E-Wℓ-24	744'	N34-5	799'
E-Wℓ-25	809'	N34-6	963'
E-Wℓ-26	907'	N34-7	1108'
E-Wℓ-27	1092'	Δ PT.	1199'
E-Wℓ-28	1132'	E1/16 COR.	127'
E-Wℓ-29	1319'	NE1/4 34-1	182'
E-Wℓ-30	1498'	NE1/4 34-2	310'
E-Wℓ-31	1613'	NE1/4 34-3	474'
E-Wℓ-32	1685'	NE1/4 34-4	547'
E-Wℓ-33	1767'	NE1/4 34-5	678'
E-Wℓ-34	1962'	NE1/4 34-6	779'
E-Wℓ-35	2119'	NE1/4 34-7	950'
E-Wℓ-36	2190'	NE1/4 34-8	1145'
E-Wℓ-37	2365'	NE1/6 COR.	1281'
E-Wℓ-38	2551'	NE1/4 34-10	SOLID ROCK
W1/4 COR.	2662'	NE1/4 34-11	151'
W34-1	92'	NE1/4 34-12	356'
W34-2	316'	NE1/4 34-13	552'
W34-3	526'	NE1/4 34-14	679'
W34-4	606'	NE1/4 34-15	834'
W34-5	650'	NE1/4 34-16	895'
W34-6	801'	NE1/4 34-17	1175'
W34-7	989'	NE1/4 34-18	1218'
W34-8	1147'	N1/6 COR.	1330'
S1/6 COR.	1337'		

**SURVEY OF
 SECTION 34, T20S, R9W, W.M.
 DOUGLAS COUNTY, OREGON
 FOR
 INTERNATIONAL PAPER COMPANY
 BY
 ROBERTS SURVEYING INC.
 29 WEST 29TH STREET
 EUGENE, OREGON 97405
 MARCH 15, 1984**

LEGEND

- CORNERS FOUND AND USED FOR CONTROL.
- CORNERS SET, 2" ALUMINUM PIPES WITH ALUMINUM CAPS. CAPS STAMPED S-T-R, DATE AND P.L.S. NO. 1039.
- LINES BLAZED AND POSTED THIS SURVEY.
- () DATA OF RECORD, 1877 AND 1953 G.L.O. SURVEYS.
- BASIS OF BEARING, SOLAR OBSERVATION.
- DISTANCE TO B.T.'S ARE CENTER MEASURE.
- ALL NEW B.T.'S ARE SCRIBED AND HAVE A BRASS WASHER STAMPED "P.L.S. 1039" NAILED TO LOWER BLAZE
- (M.M.) INDICATES LOCATION OF BURIED MAGNETIC MARKERS. MARKERS ARE ORANGE IN COLOR AND ARE BURIED, 12" TO 18" DEEP, BESIDE EACH IRON ROD.
- SCALE 1" = 400'

NARRATIVE

I, LES ROBERTS, REGISTERED PROFESSIONAL LAND SURVEYOR DO CERTIFY THAT I HAVE CORRECTLY SURVEYED SECTION 34 IN ACCORDANCE TO THE 1973 MANUAL OF INSTRUCTIONS FOR THE SURVEY OF THE PUBLIC LANDS OF THE UNITED STATES. THE CENTER 1/4 CORNER OF SECTION 34 WAS SET AT THE INTERSECTION OF THE N-S AND E-W CENTERLINES. THE SOUTH 1/16 CORNER BETWEEN SECTIONS 33 AND 34 WAS SET HALFWAY BETWEEN THE WEST 1/4 CORNER AND THE S.W. CORNER OF SECTION 34. THE NORTH 1/16 CORNER BETWEEN SECTIONS 34 AND 35 WAS SET HALFWAY BETWEEN THE EAST 1/4 CORNER AND N.E. CORNER OF SECTION 34. THE N.E. 1/16 CORNER OF SECTION 34 WAS SET AT THE INTERSECTION OF THE N-S AND E-W CENTERLINES OF SAID N.E. 1/4. A CLOSED MEANDER TRANSIT AND E.D.M. TRAVERSE WAS RUN BETWEEN ALL FOUND CORNERS AND USED FOR PRIMARY CONTROL. A CLOSED MEANDER TRANSIT AND E.D.M. TRAVERSE WAS RUN ALONG ALL BLAZED AND POSTED PROPERTY LINES. OFFSETS WERE COMPUTED FROM THIS MEANDER TRAVERSE TO TRUE PROPERTY LINE. PROPERTY LINES WERE MARKED WITH RED PAINTED BLAZES, 1/2" x 60" IRON RODS AND RED RIBBON. A WHITE TREE FARM SIGN AND A YELLOW PROPERTY LINE SIGN, WITH P.L.S. NO. 1039 AND DISTANCE TO NEAREST CORNER STAMPED UPON, IS ATTACHED TO EACH ROD. RODS ARE REFERENCED BY TWO 3" x 3" ALUMINUM TAGS NAILED TO NEARBY TREES. TAGS NOTE BEARING AND DISTANCE FROM TREE TO IRON ROD.

REGISTERED
 PROFESSIONAL
 LAND SURVEYOR
Les Roberts
 OREGON
 L.D. ROBERTS
 1039

C.S. File *58/223(1)*
 Map File *M-20-53*