

N.W. CORNER SECTION 22

FD. 1973 B.L.M. BRASS CAP
 18" FIR, S85°E, 11.1' (SCAR VIS.), 1939 B.T.
 18" FIR, N43°E, 9.0' (SCAR VIS.), 1939 B.T.
 38" FIR, N40°W, 54.4' (SCAR VIS.), 1939 B.T.
 32" FIR, S66°W, 32.6' (SCAR VIS.), 1962 B.T.
 12" FIR, N85°E, 11.1' (SCAR VIS.), 1973 B.T.

EAST 1/4 CORNER SECTION 22

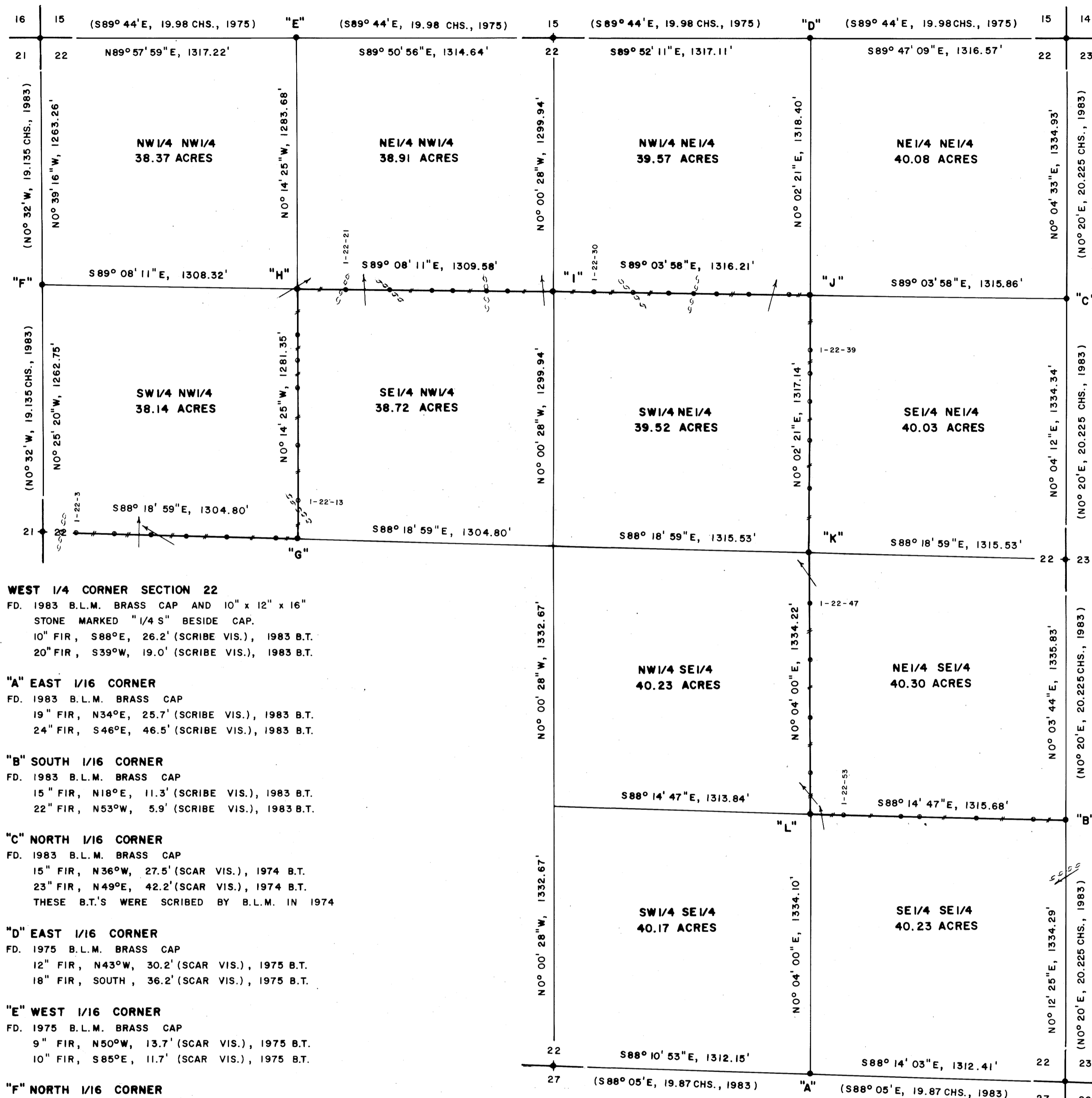
FD. 1983 B.L.M. BRASS CAP
 23" W. FIR, S32°E, 37.7' (SCRIBED VIS.), 1974 B.T.
 24" HEMLOCK, N10°W, 70.2' (SCRIBED VIS.), 1974 B.T.
 THESE B.T.'S WERE SCRIBED BY B.L.M. IN 1974

N.E. CORNER SECTION 22

FD. 1973 B.L.M. BRASS CAP (REC. 1974)
 40" FIR, N60°E, 18.4' (BARK SCRIBED), 1874 B.T.
 48" FIR, S23°W, 67.6' (SCAR VIS.), 1874 B.T.
 8" FIR, N31°W, 22.6' (SCAR VIS.), 1967 B.T.
 8" FIR, S74°E, 60.2' (SCAR VIS.), 1968 B.T.

NORTH 1/4 CORNER SECTION 22

FD. 1975 B.L.M. BRASS CAP AND 8" x 10" x 16"
 STONE MARKED "1/4 S" BESIDE CAP
 18" FIR, N18°E, 5.1' (SCAR VIS.), 1975 B.T.
 22" FIR, S15°E, 15.3' (SCAR VIS.), 1975 B.T.



WEST 1/4 CORNER SECTION 22
 FD. 1983 B.L.M. BRASS CAP AND 10" x 12" x 16"
 STONE MARKED "1/4 S" BESIDE CAP.
 10" FIR, S88°E, 26.2' (SCRIBED VIS.), 1983 B.T.
 20" FIR, S39°W, 19.0' (SCRIBED VIS.), 1983 B.T.

"A" EAST 1/16 CORNER
 FD. 1983 B.L.M. BRASS CAP
 19" FIR, N34°E, 25.7' (SCRIBED VIS.), 1983 B.T.
 24" FIR, S46°E, 46.5' (SCRIBED VIS.), 1983 B.T.

"B" SOUTH 1/16 CORNER
 FD. 1983 B.L.M. BRASS CAP
 15" FIR, N18°E, 11.3' (SCRIBED VIS.), 1983 B.T.
 22" FIR, N53°W, 5.9' (SCRIBED VIS.), 1983 B.T.

"C" NORTH 1/16 CORNER
 FD. 1983 B.L.M. BRASS CAP
 15" FIR, N36°W, 27.5' (SCAR VIS.), 1974 B.T.
 23" FIR, N49°E, 42.2' (SCAR VIS.), 1974 B.T.
 THESE B.T.'S WERE SCRIBED BY B.L.M. IN 1974

"D" EAST 1/16 CORNER
 FD. 1975 B.L.M. BRASS CAP
 12" FIR, N43°W, 30.2' (SCAR VIS.), 1975 B.T.
 18" FIR, SOUTH, 36.2' (SCAR VIS.), 1975 B.T.

"E" WEST 1/16 CORNER
 FD. 1975 B.L.M. BRASS CAP
 9" FIR, N50°W, 13.7' (SCAR VIS.), 1975 B.T.
 10" FIR, S85°E, 11.7' (SCAR VIS.), 1975 B.T.

"F" NORTH 1/16 CORNER
 FD. 1983 B.L.M. BRASS CAP
 22" FIR, N61°W, 14.8' (SCRIBED VIS.), 1983 B.T.
 22" FIR, S18°E, 40.1' (SCAR VIS.), 1975 B.T.
 S.E. B.T. WAS SCRIBED BY B.L.M. IN 1975

"G" C.W. 1/16 CORNER
 SET 1/2" x 36" IRON PIPE AND BRASS CAP
 BURIED ORANGE M.M. UNDER PIPE
 12" FIR, N13°W, 16.2' (SCRIBED/PAINTED)
 14" FIR, S78°E, 11.1' (SCRIBED/PAINTED)

"H" N.W. 1/16 CORNER
 SET 1/2" x 36" IRON PIPE AND BRASS CAP
 BURIED ORANGE M.M. UNDER PIPE
 17" ALDER, S84°W, 68.4' (SCRIBED/PAINTED)
 21" ALDER, N7°E, 51.8' (SCRIBED/PAINTED)

"I" C.N. 1/16 CORNER
 SET 1/2" x 36" IRON PIPE AND BRASS CAP
 BURIED ORANGE M.M. UNDER PIPE
 40" FIR, N2°W, 33.5' (SCRIBED/PAINTED)
 42" FIR, S76°W, 31.9' (SCRIBED/PAINTED)

"J" N.E. 1/16 CORNER
 SET 1/2" x 36" IRON PIPE AND BRASS CAP
 BURIED ORANGE M.M. UNDER PIPE
 14" FIR, S68°W, 29.5' (SCRIBED/PAINTED)
 32" FIR, S20°E, 10.1' (SCRIBED/PAINTED)

SOUTH 1/4 CORNER SECTION 22

FD. 1983 B.L.M. BRASS CAP
 20" FIR, S8°E, 13.7' (SCAR VIS.), 1975 B.T.
 34" FIR, N18°E, 43.0' (SCAR VIS.), 1975 B.T.
 THESE B.T.'S WERE SCRIBED BY B.L.M. IN 1975 SURVEY

"K" C.E. 1/16 CORNER
 SET 1/2" x 36" IRON PIPE AND BRASS CAP
 NO ORANGE M.M. UNDER PIPE
 9" FIR, S73°E, 44.7' (SCRIBED/PAINTED)
 15" FIR, N30°W, 17.3' (SCRIBED/PAINTED)

"L" S.E. 1/16 CORNER
 SET 1/2" x 36" IRON PIPE AND BRASS CAP
 BURIED ORANGE M.M. UNDER PIPE
 25" FIR, S52°E, 42.5' (SCRIBED/PAINTED)
 31" FIR, S56°W, 39.3' (SCRIBED/PAINTED)

S.E. CORNER SECTION 22

FD. 1983 B.L.M. BRASS CAP AND 6" x 8" x 10"
 STONE WITH 2 NOTCHES ON S. & E. SIDES
 30" FIR STUMP, N41°W, 35.0' (NO MARKS), 1894 B.T.
 46" FIR SNAG, N41°E, 18.8' (NO MARKS), 1894 B.T.
 48" FIR SNAG, S65°E, 65.0' (NO MARKS), 1894 B.T.
 11" FIR, N55°E, 33.6' (SCRIBED VIS.), 1983 B.T.
 12" FIR, S87°E, 33.3' (SCRIBED VIS.), 1983 B.T.
 17" FIR, S76°W, 55.9' (SCRIBED VIS.), 1983 B.T.
 18" FIR, N88°W, 73.2' (SCRIBED VIS.), 1983 B.T.

COUNTY SURVEYORS FILE DATA
 DO NOT REMOVE FROM OFFICE

FILED
 RECEIVED
 MAR 22 1984
 COUNTY SURVEYOR
 DOUGLAS COUNTY, ORE

SURVEY OF
 SECTION 22, T22S, R9W, W.M.
 DOUGLAS COUNTY, OREGON
 FOR
 INTERNATIONAL PAPER COMPANY
 BY
 ROBERTS SURVEYING INC.
 29 WEST 29TH STREET
 EUGENE, OREGON 97405
 JANUARY 20, 1984

- LEGEND**
- CORNERS FOUND AND USED FOR CONTROL
 - CORNERS SET, 1/2" x 36" IRON PIPES AND BRASS CAPS STAMPED S-T-R, DATE AND P.L.S. NO. 1039
 - — — LINES BLAZED AND POSTED THIS SURVEY
 - () DATA OF RECORD, 1975 AND 1983 B.L.M. SURVEYS
 - BASIS OF BEARING, SOLAR OBSERVATION
 - DISTANCES TO B.T.'S ARE CENTER MEASURE
 - ALL NEW B.T.'S ARE SCRIBED AND HAVE A BRASS WASHER STAMPED "P.L.S. 1039" NAILED TO LOWER BLAZE
 - (M.M.) INDICATES LOCATION OF BURIED MAGNETIC MARKERS. MARKERS ARE ORANGE IN COLOR AND ARE BURIED 12" TO 18" DEEP BESIDE EACH IRON ROD.
 - SCALE 1" = 400'

NARRATIVE

I, LES ROBERTS, REGISTERED PROFESSIONAL LAND SURVEYOR DO CERTIFY THAT I HAVE CORRECTLY SURVEYED SECTION 22 IN ACCORDANCE TO THE 1973 MANUAL OF INSTRUCTIONS FOR THE SURVEY OF THE PUBLIC LANDS OF THE UNITED STATES. THE EXTERIOR BOUNDARIES OF SECTION 22 WERE RE-SURVEYED BY THE B.L.M. CADASTRAL SURVEYOR FROM COOS BAY, OREGON BEGINNING IN AUGUST OF 1973 AND FINISHING IN DECEMBER OF 1979 AS NOTED ON THE OFFICIAL PLAT APPROVED FEBRUARY 25, 1980. I STARTED A SUBDIVISIONAL SURVEY OF SECTION 22 IN MARCH OF 1983 AND AT THIS TIME FOUND TWO ORIGINAL STONES OVERLOOKED BY THE B.L.M. CADASTRAL SURVEYOR IN THE 1973-1979 SURVEY. ONE STONE MARKED THE S.E. CORNER OF SECTION 22 AND THE 2ND STONE MARKED THE WEST 1/4 CORNER OF SECTION 22. I MET WITH HARVEY WOFFORD, CADASTRAL SURVEYOR FROM COOS BAY, AND WE DISCUSSED WHAT SHOULD BE DONE ABOUT THESE 2 OVERLOOKED STONES. IT WAS DECIDED THAT THE B.L.M. WOULD CORRECT THEIR 1973-1979 SURVEY TO CONFORM TO THE RECENTLY FOUND STONES AND THAT THIS WORK WAS TO BE DONE DURING THE UPCOMING SUMMER SEASON. I PHONED HARVEY WOFFORD IN EARLY SEPTEMBER AND WAS TOLD THAT HIS CREW HAD FINISHED THEIR RE-SURVEY OF SECTION 22 AND IN MID-SEPTEMBER I RETURNED TO COMPLETE MY SUBDIVISIONAL SURVEY. THE POSITION FOR THE CENTER 1/4 CORNER WAS DETERMINED BY INTERSECTING THE N-S AND E-W CENTERLINES OF SECTION 22. THE C.W. 1/16 CORNER, THE C.N. 1/16 CORNER AND THE C.E. 1/16 CORNER WERE SET HALFWAY BETWEEN THE CENTER 1/4 CORNER AND THE WEST 1/4 CORNER, THE NORTH 1/4 CORNER AND THE EAST 1/4 CORNER RESPECTIVELY AS SHOWN. THE N.W. 1/16 CORNER, THE N.E. 1/16 CORNER AND THE S.E. 1/16 CORNER WERE SET AT THE INTERSECTION OF THE N-S AND E-W CENTERLINES OF THE N.W. 1/4, THE N.E. 1/4 AND THE S.E. 1/4 RESPECTIVELY AS SHOWN. A CLOSED MEANDER TRANSIT AND E.D.M. TRAVERSE WAS RUN BETWEEN ALL FOUND CORNERS AND USED FOR CONTROL. A CLOSED MEANDER TRANSIT AND CHAIN TRAVERSE WAS RUN ALONG ALL BLAZED AND POSTED PROPERTY LINES. OFFSETS WERE COMPUTED FROM THIS MEANDER TRAVERSE TO THE TRUE PROPERTY LINE. PROPERTY LINES WERE MARKED WITH RED PAINTED BLAZES, 1/2" x 60" IRON RODS AND RED RIBBON. A YELLOW PROPERTY LINE SIGN, WITH P.L.S. NO. 1039 AND DISTANCE TO NEAREST CORNER STAMPED UPON, IS ATTACHED TO EACH ROD. RODS ARE REFERENCED BY A 3" x 3" ALUMINUM TAG NAILED TO NEARBY TREES. TAG NOTES BEARING AND DISTANCE FROM TREE TO IRON ROD.

LOCATION OF 1/2" IRON RODS

W. 1/4 COR.					
I-22-2	95'	EAST (M.M.)	I-22-31		
I-22-3	168'	EAST (M.M.)	I-22-33	590'	EAST (M.M.)
I-22-4	368'	EAST (M.M.)	I-22-34	722'	EAST (M.M.)
I-22-5	556'	EAST (M.M.)	I-22-35	834'	EAST (M.M.)
I-22-6	734'	EAST (M.M.)	I-22-36	1001'	EAST (M.M.)
I-22-8	948'	EAST (M.M.)	I-22-37	1209'	EAST (M.M.)
I-22-9	1198'	EAST (M.M.)	NE 1/16 COR.	1316'	EAST (M.M.)
CW 1/16 COR.	1305'	EAST (M.M.)	I-22-39	278'	SOUTH (M.M.)
I-22-13	202'	NORTH (M.M.)	I-22-40	396'	SOUTH (M.M.)
I-22-14	480'	NORTH (M.M.)	I-22-41	540'	SOUTH (M.M.)
I-22-15	773'	NORTH (M.M.)	I-22-42	738'	SOUTH (M.M.)
I-22-16	915'	NORTH (M.M.)	I-22-43	986'	SOUTH (M.M.)
I-22-17	1044'	NORTH (M.M.)	CE 1/16 COR.	1317'	SOUTH (M.M.)
NW 1/16 COR	1281'	NORTH (M.M.)	I-22-47	258'	SOUTH (M.M.)
I-22-21	249'	EAST (M.M.)	I-22-48	548'	SOUTH (M.M.)
I-22-22	474'	EAST (M.M.)	I-22-49	843'	SOUTH (M.M.)
I-22-23	691'	EAST (M.M.)	I-22-50	1127'	SOUTH (M.M.)
I-22-24	796'	EAST (M.M.)	SE 1/16 COR	1334'	SOUTH (M.M.)
I-22-26	969'	EAST (M.M.)	I-22-53	176'	EAST (M.M.)
I-22-27	1077'	EAST (M.M.)	I-22-54	468'	EAST (M.M.)
CN 1/16 COR.	1310'	EAST (M.M.)	I-22-55	561'	EAST (M.M.)
I-22-30	212'	EAST (M.M.)	I-22-56	857'	EAST (M.M.)
I-22-31	410'	EAST (M.M.)	I-22-57	1144'	EAST (M.M.)
			S. 1/16 COR.	1316'	EAST (M.M.)

REGISTERED
 PROFESSIONAL
 LAND SURVEYOR
 Les Roberts
 GREGG
 L.D. ROBERTS

COUNTY SURVEYORS FILE DATA
 DO NOT REMOVE FROM OFFICE

Map File M-90-52

C.S. File 58/280(1)
 Map File M-90-52