

NORTH 1/16 CORNER SECTION 1 ONLY
 FD. 1/2" IRON PIPE AND BRASS CAP SET IN 1981. SEE DOUGLAS COUNTY MAP FILE M88-13
 26" MAPLE, S84°E, 44.9' (BARK SCRIBED), 1981 B.T.
 22" FIR, S24°E, 56.6' (SCAR VIS.), 1981 B.T.

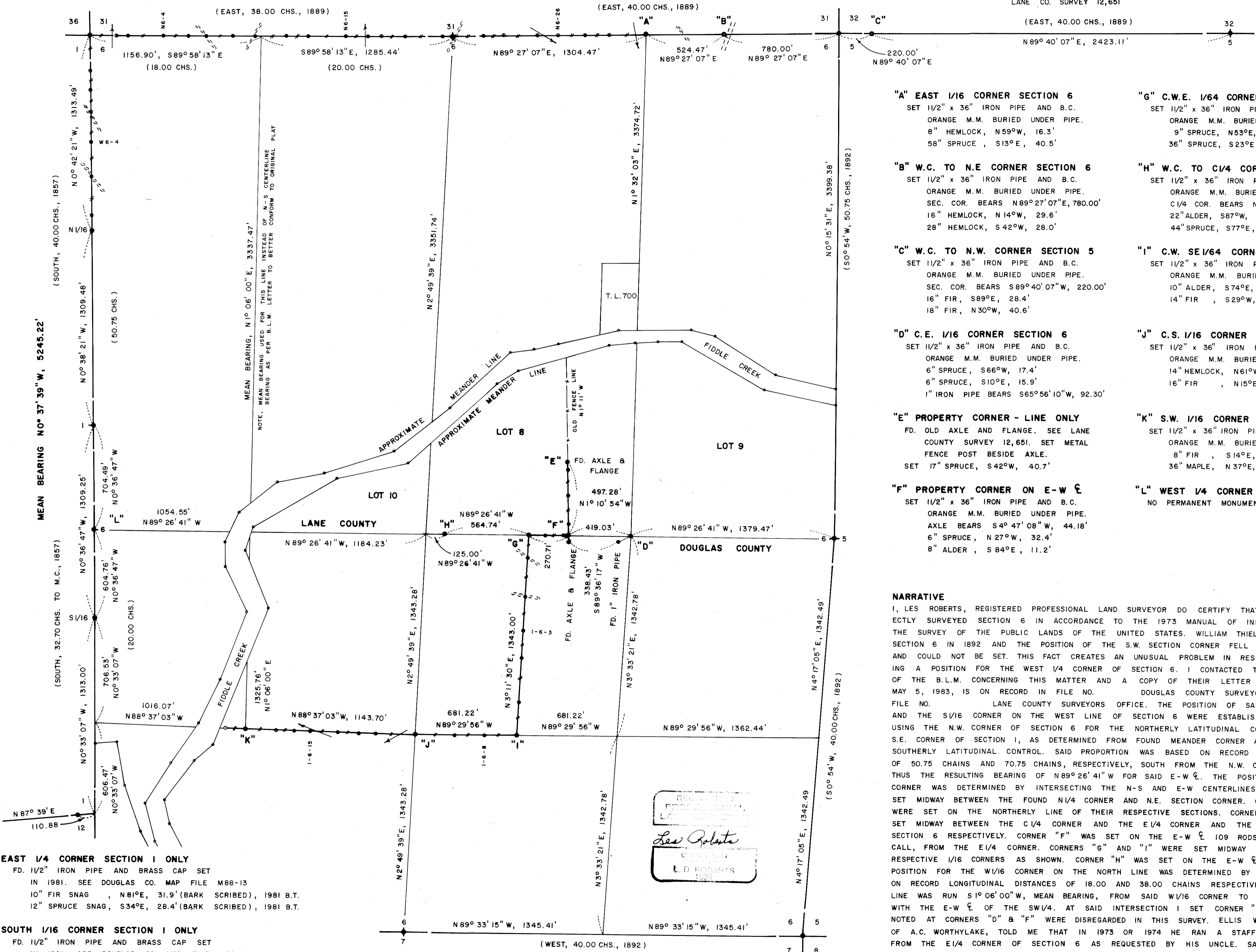
N.W. CORNER SECTION 6
 FD. 1964 DOUGLAS CO. BRASS CAP. SEE RENEWAL NO. 32.
 35" FIR, N50°E, 7.2' (SCRIBE VIS.), 1889 B.T.
 27" FIR, S50°E, 10.8' (SCAR VIS.), 1964 C.S.B.T.
 37" FIR, S35°W, 13.8' (SCAR VIS.), 1964 C.S.B.T.

NORTH 1/4 CORNER SECTION 6
 FD. 1" IRON PIPE SET IN LANE CO. SURVEY 17,453
 25" FIR SNAG, N41°W, 10.7' (SCRIBE VIS.), 1889 B.T.
 SET 6" SPRUCE, S78°E, 6.7' (SCRIBED/WASHER)
 8" FIR, N7°E, 12.4' (SCRIBED/WASHER)

N.E. CORNER SECTION 6
 FD. OLD FENCE POST IN 30" OF WATER.
 LINE OF POSTS RUNNING N-S-W. THIS POST HAS LONG BEEN RECOGNIZED BY ADJACENT LANDOWNERS AS THE SECTION CORNER. SEE RE-STAB. CARD 5335 AND LANE CO. SURVEY 12,651

NORTH 1/4 CORNER SECTION 5
 FD. 1" IRON PIPE. AXLE AND FLANGE BEAR EAST 0.35. SEE RE-ESTAB CARD 3902.
 39" FIR STUMP, N51°E, 49.4' (NO MARKS), 1889 B.T.
 7" ALDER, S16°W, 14.0' (SCRIBE VIS.), 1968 B.T.
 21" SPRUCE, N80°W, 29.0' (SCAR VIS.), 1968 B.T.

FILED RECEIVED
 DEC 20 1983
 COUNTY SURVEYOR DOUGLAS COUNTY, ORE.



EAST 1/4 CORNER SECTION 1 ONLY
 FD. 1/2" IRON PIPE AND BRASS CAP SET IN 1981. SEE DOUGLAS CO. MAP FILE M88-13
 10" FIR SNAG, N81°E, 31.9' (BARK SCRIBED), 1981 B.T.
 12" SPRUCE SNAG, S34°E, 28.4' (BARK SCRIBED), 1981 B.T.

SOUTH 1/16 CORNER SECTION 1 ONLY
 FD. 1/2" IRON PIPE AND BRASS CAP SET IN 1981. SEE DOUGLAS CO. MAP FILE M88-13
 8" CASCARA, S01°W, 20.8' (BARK SCRIBED), 1981 B.T.
 60" SPRUCE, N75°E, 11.9' (SCRIBE VIS.), 1981 B.T.

MEANDER CORNER SECTIONS 1 AND 12 ONLY
 FD. 3/4" IRON ROD (NO RECORD) IN CUT-BANK OF ROAD. SEE DOUGLAS COUNTY RENEWAL NO. 5 AND NO. 96.
 SECTION CORNER 1 AND 12 BEARS N87° 39'E, 110.86' AS NOTED IN 1857 G.L.O. NOTES.
 25" FIR, N39°W, 15.2' (SCAR VIS.), 1958 B.T.

SOUTH 1/4 CORNER SECTION 6
 FD. 1970 DOUGLAS COUNTY BRASS CAP. SEE DOUGLAS COUNTY RENEWAL NO. 89.
 14" FIR, S26°W, 78.4' (SCAR VIS.), 1970 C.S.B.T.
 65" FIR, S89 1/2°W, 122.0' (SCAR VIS.), 1970 C.S.B.T.
 65" FIR, S89 1/2°W, 122.0' (NOTCHES VIS.), 1892 LINE TREE

S.E. CORNER SECTION 6
 FD. 1970 DOUGLAS CO. BRASS CAP. SEE RENEWAL NO. 87.
 17" FIR SNAG, N71°E, 13.8' (NEGATIVE SCRIBE), 1892 B.T.
 26" FIR STUMP, S16°E, 6.6' (SCAR VIS.), 1892 B.T.
 36" FIR STUMP, S43°W, 8.8' (SCAR VIS.), 1892 B.T.
 23" ALDER, N24°W, 35.3' (SCAR VIS.), 1970 C.S.B.T.
 32" SPRUCE, N48°E, 28.4' (SCRIBE VIS.), 1970 C.S.B.T.
 6" ALDER, N88°W, 22.5' (BARK SCRIBED), 1982 B.T.
 7" ALDER, S60°E, 13.3' (BARK SCRIBED), 1982 B.T.

EAST 1/4 CORNER SECTION 6
 FD. 1/4" IRON ROD. SEE DOUGLAS CO. RENEWAL NO. 30 & 85.
 24" FIR STUMP, S88°E, 6.0' (SCAR VIS.), 1892 B.T.
 20" FIR SNAG, N33°W, 13.0' (SCAR VIS.), 1934 C.S.B.T.
 26" FIR STUMP, S11°E, 16.3' (SCRIBE VIS.), 1934 C.S.B.T.
 6" ALDER, N34°E, 14.4' (BARK SCRIBED), 1970 C.S.B.T.
 11" ALDER, S70°E, 11.2' (SCRIBE VIS.), 1970 C.S.B.T.
 11" ALDER, S26°W, 13.8' (SCRIBE VIS.), 1970 C.S.B.T.
 12" ALDER, N45°W, 16.0' (BARK SCRIBED), 1970 C.S.B.T.

- "A" EAST 1/16 CORNER SECTION 6**
 SET 1 1/2" x 36" IRON PIPE AND B.C.
 ORANGE M.M. BURIED UNDER PIPE.
 8" HEMLOCK, N59°W, 16.3'
 58" SPRUCE, S13°E, 40.5'
- "B" W.C. TO N.E. CORNER SECTION 6**
 SET 1 1/2" x 36" IRON PIPE AND B.C.
 ORANGE M.M. BURIED UNDER PIPE.
 SEC. COR. BEARS N89°27'07"E, 780.00'
 16" HEMLOCK, N14°W, 29.6'
 28" HEMLOCK, S42°W, 28.0'
- "C" W.C. TO N.W. CORNER SECTION 5**
 SET 1 1/2" x 36" IRON PIPE AND B.C.
 ORANGE M.M. BURIED UNDER PIPE.
 SEC. COR. BEARS S89°40'07"W, 220.00'
 16" FIR, S89°E, 28.4'
 18" FIR, N30°W, 40.6'
- "D" C.E. 1/16 CORNER SECTION 6**
 SET 1 1/2" x 36" IRON PIPE AND B.C.
 ORANGE M.M. BURIED UNDER PIPE.
 6" SPRUCE, S66°W, 17.4'
 6" SPRUCE, S10°E, 15.9'
 1" IRON PIPE BEARS S65°56'10"W, 92.30'
- "E" PROPERTY CORNER - LINE ONLY**
 FD. OLD AXLE AND FLANGE. SEE LANE COUNTY SURVEY 12,651. SET METAL FENCE POST BESIDE AXLE.
 SET 17" SPRUCE, S42°W, 40.7'
- "F" PROPERTY CORNER ON E-W 1/4**
 SET 1 1/2" x 36" IRON PIPE AND B.C.
 ORANGE M.M. BURIED UNDER PIPE.
 AXLE BEARS S4°47'08"W, 44.18'
 6" SPRUCE, N27°W, 32.4'
 8" ALDER, S84°E, 11.2'
- "G" C.W.E. 1/64 CORNER SECTION 6**
 SET 1 1/2" x 36" IRON PIPE AND B.C.
 ORANGE M.M. BURIED UNDER PIPE.
 9" SPRUCE, N53°E, 21.5'
 36" SPRUCE, S23°E, 9.6'
- "H" W.C. TO C1/4 CORNER SECTION 6**
 SET 1 1/2" x 36" IRON PIPE AND B.C.
 ORANGE M.M. BURIED UNDER PIPE.
 C1/4 COR. BEARS N89°26'41"W, 125.00'
 22" ALDER, S87°W, 11.2' (BARK SCRIBED)
 44" SPRUCE, S77°E, 40.2'
- "I" C.W. SE 1/64 CORNER SECTION 6**
 SET 1 1/2" x 36" IRON PIPE AND B.C.
 ORANGE M.M. BURIED UNDER PIPE.
 10" ALDER, S74°E, 10.5'
 14" FIR, S29°W, 15.0'
- "J" C.S. 1/16 CORNER SECTION 6**
 SET 1 1/2" x 36" IRON PIPE AND B.C.
 ORANGE M.M. BURIED UNDER PIPE.
 14" HEMLOCK, N61°W, 9.6'
 16" FIR, N15°E, 27.4'
- "K" S.W. 1/16 CORNER SECTION 6**
 SET 1 1/2" x 36" IRON PIPE AND B.C.
 ORANGE M.M. BURIED UNDER PIPE.
 8" FIR, S14°E, 12.8'
 36" MAPLE, N37°E, 25.6'
- "L" WEST 1/4 CORNER SECTION 6**
 NO PERMANENT MONUMENT SET.

SURVEY OF SECTION 6, T20S, R11W, W.M. LANE COUNTY, OREGON & DOUGLAS COUNTY, OREGON FOR INTERNATIONAL PAPER COMPANY BY ROBERTS SURVEYING INC. 29 WEST 29TH STREET EUGENE, OREGON 97405 OCTOBER 30, 1983

LOCATION OF 1/2" IRON RODS

N 1/16 COR.	102'	NORTH			
W6-1	102'	NORTH			
W6-2	365'	NORTH			
W6-4	594'	NORTH			
W6-5	797'	NORTH			
W6-6	942'	NORTH	AXLE		
W6-7	1073'	NORTH	P/L-1	56'	SOUTH
N.W. COR.	1314'	NORTH	P/L-2	227'	SOUTH
N6-1	182'	EAST	P/L-3	414'	SOUTH
N6-2	258'	EAST	PROP. COR. "F"	497'	SOUTH
N6-4	497'	EAST	E-W 1/4-12	22'	WEST
N6-5	663'	EAST	E-W 1/4-14	149'	WEST
N6-7	784'	EAST	C.W.E. 1/64	271'	WEST
N6-8	964'	EAST	I-6-1	153'	SOUTH
N6-9	1115'	EAST	I-6-2	412'	SOUTH
N6-11	1324'	EAST	I-6-3	641'	SOUTH
N6-13	1471'	EAST	I-6-4	826'	SOUTH
N6-15	1725'	EAST	I-6-5	1124'	SOUTH
N6-16	1877'	EAST	C.W. SE 1/64	1343'	SOUTH
N6-17	1967'	EAST	I-6-8	219'	WEST
N6-19	2123'	EAST	I-6-9	419'	WEST
N6-20	2373'	EAST	C.S. 1/16 COR.	681'	WEST
N. 1/4 COR.	2442'	EAST	I-6-12	265'	WEST
N6-22	208'	EAST	I-6-13	379'	WEST
N6-24	344'	EAST	I-6-14	521'	WEST
N6-25	569'	EAST	I-6-15	705'	WEST
N6-26	715'	EAST	I-6-16	816'	WEST
N6-28	895'	EAST	I-6-17	936'	WEST
N6-30	1053'	EAST	S.W. 1/16 COR.	1144'	WEST
E. 1/16 COR.	1304'	EAST	I-6-20	1283'	WEST

NARRATIVE
 I, LES ROBERTS, REGISTERED PROFESSIONAL LAND SURVEYOR DO CERTIFY THAT I HAVE CORRECTLY SURVEYED SECTION 6 IN ACCORDANCE TO THE 1973 MANUAL OF INSTRUCTIONS FOR THE SURVEY OF THE PUBLIC LANDS OF THE UNITED STATES. WILLIAM THIEL SURVEYED SECTION 6 IN 1892 AND THE POSITION OF THE S.W. SECTION CORNER FELL IN SILTCOOS LAKE AND COULD NOT BE SET. THIS FACT CREATES AN UNUSUAL PROBLEM IN RESPECT TO DETERMINING A POSITION FOR THE WEST 1/4 CORNER OF SECTION 6. I CONTACTED THE PORTLAND OFFICE OF THE B.L.M. CONCERNING THIS MATTER AND A COPY OF THEIR LETTER OF REPLY, DATED MAY 5, 1983, IS ON RECORD IN FILE NO. DOUGLAS COUNTY SURVEYORS OFFICE AND FILE NO. LANE COUNTY SURVEYORS OFFICE. THE POSITION OF SAID WEST 1/4 CORNER AND THE S1/16 CORNER ON THE WEST LINE OF SECTION 6 WERE ESTABLISHED BY PROPORTION USING THE N.W. CORNER OF SECTION 6 FOR THE NORTHERLY LATITUDINAL CONTROL AND THE S.E. CORNER OF SECTION 1, AS DETERMINED FROM FOUND MEANDER CORNER AS SHOWN, AS THE SOUTHERLY LATITUDINAL CONTROL. SAID PROPORTION WAS BASED ON RECORD LATITUDINAL DISTANCES OF 50.75 CHAINS AND 70.75 CHAINS, RESPECTIVELY, SOUTH FROM THE N.W. CORNER OF SECTION 6. THUS THE RESULTING BEARING OF N89°26'41"W FOR SAID E-W 1/4. THE POSITION FOR THE C1/4 CORNER WAS DETERMINED BY INTERSECTING THE N-S AND E-W CENTERLINES. CORNER "A" WAS SET MIDWAY BETWEEN THE FOUND N1/4 CORNER AND N.E. SECTION CORNER. CORNERS "B" AND "C" WERE SET ON THE NORTHERLY LINE OF THEIR RESPECTIVE SECTIONS. CORNERS "D" AND "J" WERE SET MIDWAY BETWEEN THE C1/4 CORNER AND THE E1/4 CORNER AND THE S1/4 CORNER OF SECTION 6 RESPECTIVELY. CORNER "F" WAS SET ON THE E-W 1/4 109 RODS WESTERLY, DEED CALL, FROM THE E1/4 CORNER. CORNERS "G" AND "I" WERE SET MIDWAY BETWEEN THEIR RESPECTIVE 1/16 CORNERS AS SHOWN. CORNER "H" WAS SET ON THE E-W 1/4 AS SHOWN. THE POSITION FOR THE W1/16 CORNER ON THE NORTH LINE WAS DETERMINED BY PROPORTION BASED ON RECORD LONGITUDINAL DISTANCES OF 18.00 AND 38.00 CHAINS RESPECTIVELY AS SHOWN. A LINE WAS RUN S1°06'00"W, MEAN BEARING, FROM SAID W1/16 CORNER TO ITS INTERSECTION WITH THE E-W 1/4 OF THE SW1/4. AT SAID INTERSECTION I SET CORNER "K". FOUND MONUMENTS NOTED AT CORNERS "D" & "F" WERE DISREGARDED IN THIS SURVEY. ELLIS WORTHYLAKE, NEPHEW OF A.C. WORTHYLAKE, TOLD ME THAT IN 1973 OR 1974 HE RAN A STAFF COMPASS LINE WEST FROM THE E1/4 CORNER OF SECTION 6 AS REQUESTED BY HIS UNCLE. SAID MONUMENTS WERE SET AT A LATER DATE BY PROPERTY OWNER A.C. WORTHYLAKE.

- LEGEND**
- CORNERS FOUND AND USED FOR CONTROL
 - CORNERS SET, 1 1/2" x 36" IRON PIPES WITH BRASS CAPS. CAPS STAMPED S-T-R, DATE AND P.L.S. NO. 1039.
 - LINE MARKED WITH RED PAINTED BLAZES, 1/2" x 60" IRON RODS AND RED RIBBON. A YELLOW PROPERTY LINE SIGN, WITH P.L.S. NO. 1039 STAMPED UPON, IS ATTACHED TO EACH ROD.
 - () DATA OF RECORD, 1889 AND 1892 G.L.O. SURVEY.
 - ☉ BASIS OF BEARING, SOLAR OBSERVATION.
 - ☉ DISTANCE TO BEARING TREES ARE CENTER MEASURE.
 - ☉ ALL NEW BEARING TREES ARE SCRIBED AND HAVE A BRASS WASHER STAMPED "P.L.S. 1039" NAILED TO LOWER BLAZE. SCRIBED BLAZES ARE PAINTED RED.
 - M.M. INDICATES LOCATION OF BURIED MAGNETIC MARKERS.
 - SCALE 1" = 400'

COUNTY SURVEYORS FILE DATA DO NOT REMOVE FROM OFFICE
 C S File 50/200
 Map File M90-50