

5-061W  
 COUNTY SURVEYORS FILE DATA  
 DO NOT REMOVE FROM OFFICE

SURVEY TO SET ONE-SIXTEENTH CORNERS

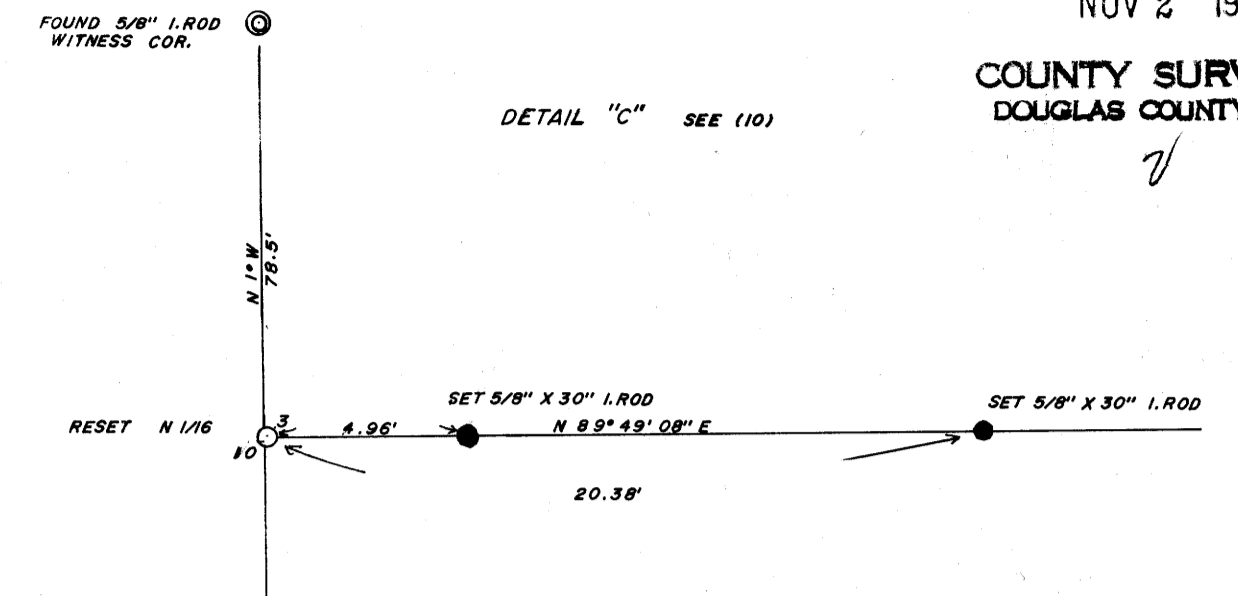
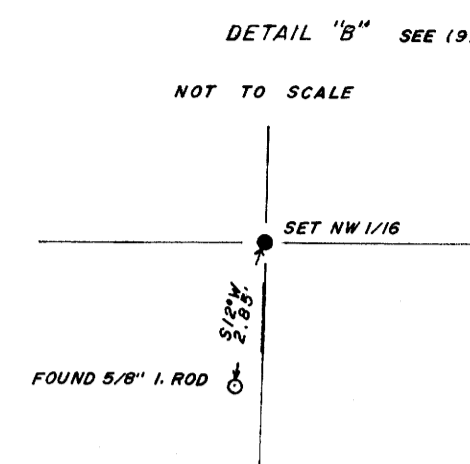
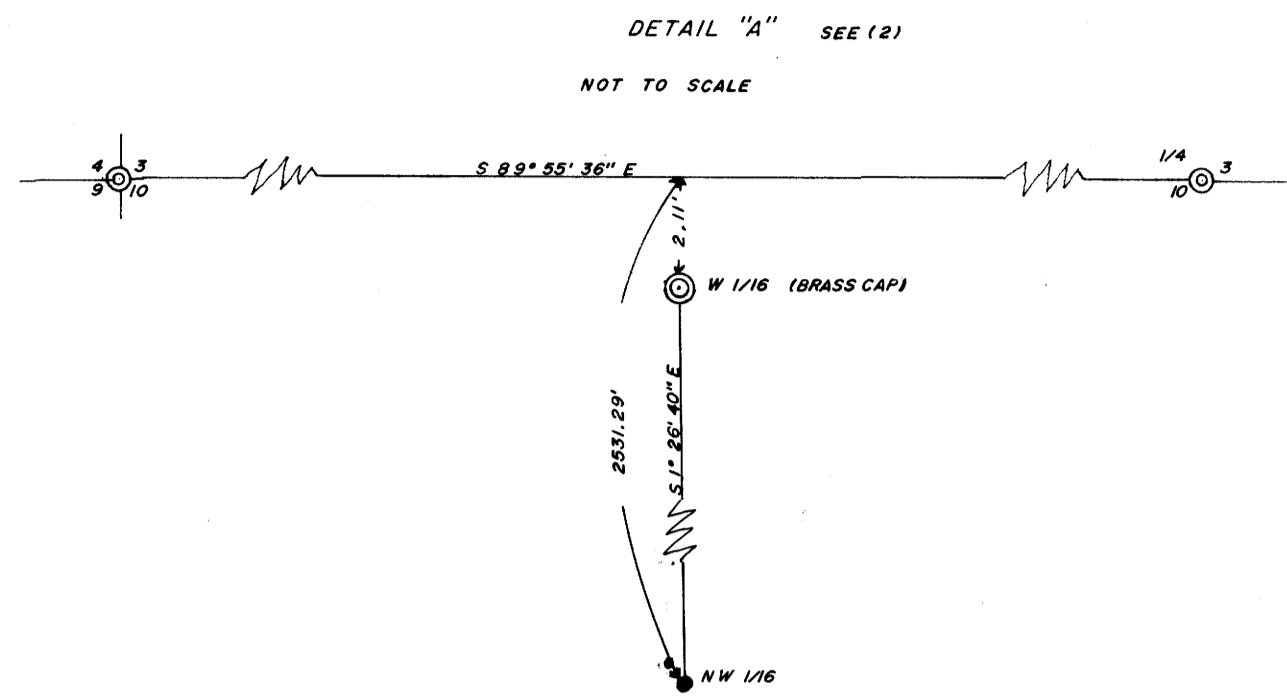
SECTION 10, T28S R4W W.M.

FOR: SUN STUDS INC.

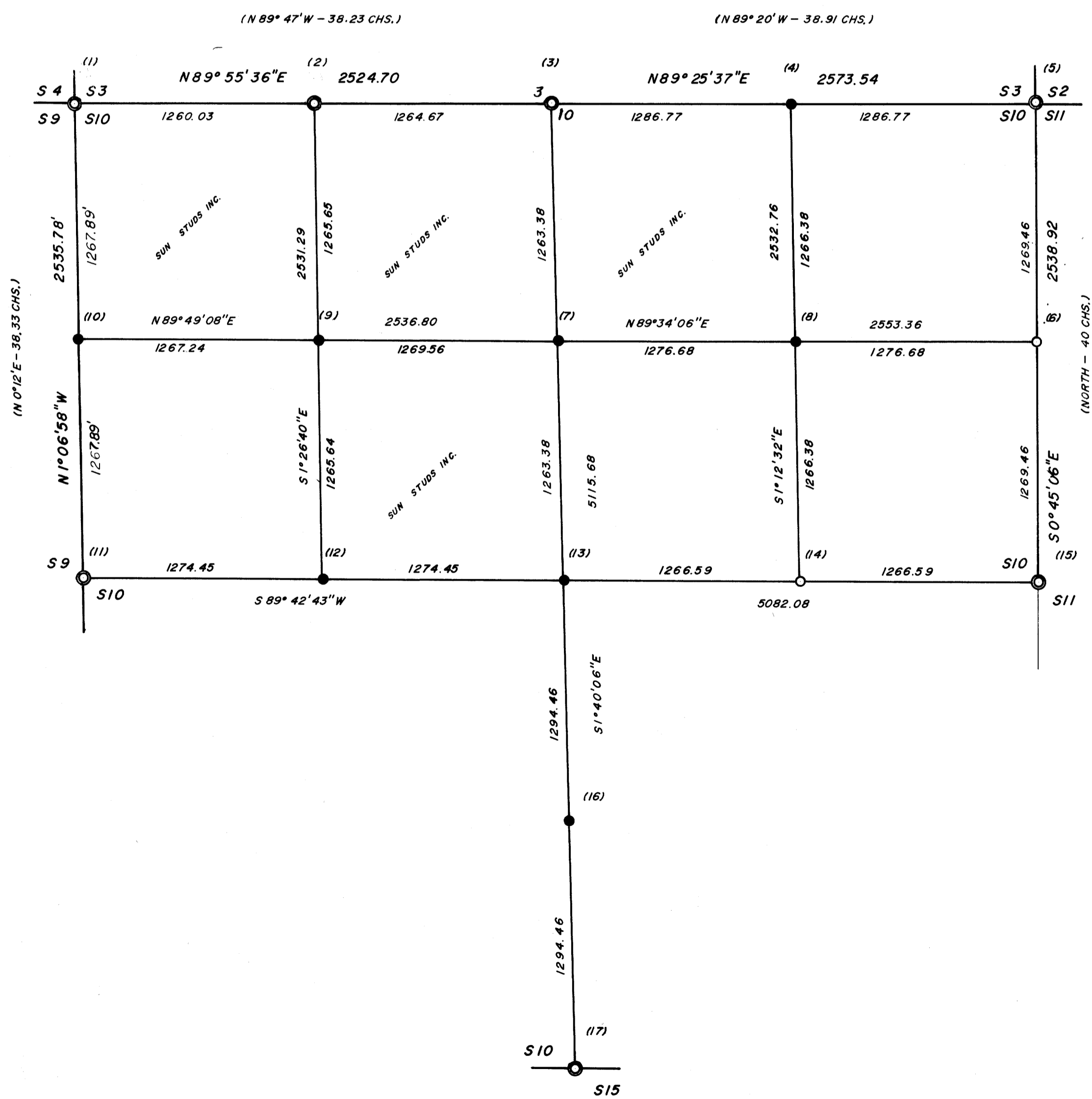
BY: BURTON W. HOLT - P.O. BOX-1127-ROSEBURG, OR - 97470

OCTOBER, 1981 ( ) = CALLS OF RECORD 1" = 500'

- MONUMENTS SET
- ⊙ MONUMENTS FOUND
- CALCULATED BUT NOT SET



RESET N 1/16 BY PROPORTIONATE DISTANCE, FROM WHICH: A D. FIR 14\"/>



- (1) FOUND BRASS CAP & BT'S AS RECORDED
- (2) FOUND BRASS CAP & BT'S AS RECORDED (SEE DETAIL "A")
- (3) FOUND BRASS CAP & BT'S AS RECORDED CORNER LIE'S ON STEEP NORTH SLOPE APPROX. 125' SOUTH OF MAIN ROAD.
- (4) SET 5/8" X 30" IRON ROD 24" IN THE GRD. FROM WHICH BEARS - 16" DOUG. FIR N 71° E 21.0 MKD. E 1/16 SIOBT 12" HEMLOCK S 48° W 33.1 MKD. E 1/16 SIOBT CORNER LIES IN OLD CAT RD. ON WEST SLOPE, MAIN BL. M. RD. BEARS N 25° W 400'+
- (5) FOUND BRASS CAP & BT'S AS RECORDED
- (6) CALCULATED AND NOT SET
- (7) SET 5/8" X 30" IRON ROD 22" IN THE GRD. FROM WHICH BEARS - 11" DOUG. FIR S 10° E 31.0 MKD. CN 1/16 SIOBT 11" DOUG. FIR N 71° W 27.4 MKD. CN 1/16 SIOBT CORNER LIES 40' NW OF NEW CAT ROAD
- (8) SET 5/8" X 30" IRON ROD 27" IN THE GRD. FROM WHICH BEARS - 13" DOUG. FIR S 33° W 22.3 MKD. NE 1/16 SIOBT 16" CEDAR N 20° E 50.1 MKD. NE 1/16 SIOBT CORNER LIES ON SE SLOPE IN HEAVY REPROD. BRUSH 180' EAST OF DIRT ROAD & 180' SOUTH OF SAME DIRT ROAD
- (9) SET 5/8" X 30" IRON ROD 24" IN THE GRD. FROM WHICH BEARS - 15" DOUG. FIR S 43° W 10.5 MKD. NW 1/16 SIOBT 8" DOUG. FIR N 37° E 40.5 MKD. NW 1/16 SIOBT CORNER LIES ON NORTH IN SHALLOW DRAINAGE (SEE DETAIL "B")
- (10) SET 5/8" X 30" IRON ROD 24" IN THE GRD. ON LINE AT PROPORTIONATE DISTANCE ORIGINAL BT'S NOW HEALED BLAZE ON STUMPS (SEE DETAIL "C")
- (11) FOUND BRASS CAP & BT'S AS RECORDED
- (12) SET 5/8" X 30" IRON ROD 26" IN THE GRD. FROM WHICH BEARS - 6" DOUG. FIR N 30° W 12.8 MKD. CW 1/16 SIOBT 16" CEDAR N 76° W 31.0 MKD. CW 1/16 SIOBT
- (13) SET 5/8" X 30" IRON ROD 26" IN THE GRD. FROM WHICH BEARS - 6" DOUG. FIR N 33° E 20.0 MKD. C 1/4 SIOBT 6" LAUREL S 38° W 10.0 MKD. C 1/4 SIOBT CORNER LIES ON SOUTH SLOPE 130' EAST OF A DRAW & 75' WEST OF A CAT IN HEAVY BRUSH & REPRODUCTION.
- (14) CALCULATED & NOT SET
- (15) FOUND BRASS CAP & BT'S AS RECORDED
- (16) CORNER FALLS ON SE CORNER OF 38" STUMP SET 4" ALUMINUM NAIL IN STUMP AT CORRECT POSITION. SET 5/8" X 30" IRON ROD ALONGSIDE APPROX. 0.2' OUT OF POSITION.
- (17) FOUND BRASS CAP & BT'S AS RECORDED

REGISTERED PROFESSIONAL LAND SURVEYOR  
 BURTON W. HOLT  
 OREGON  
 OCTOBER 7, 1987  
 BURTON W. HOLT  
 418

COUNTY SURVEYORS FILE DATA  
 DO NOT REMOVE FROM OFFICE

DATE	APPROVED BY	DRAWING NUMBER
		5. FILE NO. 57/252
SCALE	DRAWN BY	REVISED

M 90-5

FILED ✓  
RECEIVED *JK*

NOV 2 1981

SURVEY NARRATIVE TO COMPLY WITH PARAGRAPH 200, 250 O.R.S.

COUNTY SURVEYOR  
DOUGLAS COUNTY, ORE.

SURVEY FOR: Sun Studs, Inc.  
P.O. Box 1127  
Roseburg, OR. 97470

DATE: October 29, 1981

LOCATION: Section 10, T28S, R4W, Willamette  
Meridian.

PURPOSE: To Sub-Divide the section and set one-  
sixteenth corners and the center one-  
quarter corner.

PROCEDURE: Found all existing corners necessary  
for this survey. Closed a traverse  
through these corners and determined all  
bearings and distances necessary to set the  
corners by intersection and proportionate  
measurement.

EQUIPMENT: This survey was executed with a Lietz  
6 second Theodolite, a Lietz EDM, a 300  
foot steel stape, and a Surveyor 31  
computer.

BASIS OF BEARING: All bearings are based on a Solar  
observation taken between 10:36 and  
10:39 A.M. Pacific Standard Time, Thursday  
November 20, 1980 at a latitude of  
43° 09-75'

REGISTERED  
PROFESSIONAL  
LAND SURVEYOR

*Burton W. Holt*

OREGON  
OCTOBER 4, 1957  
BURTON W. HOLT  
418