

NARRATIVE

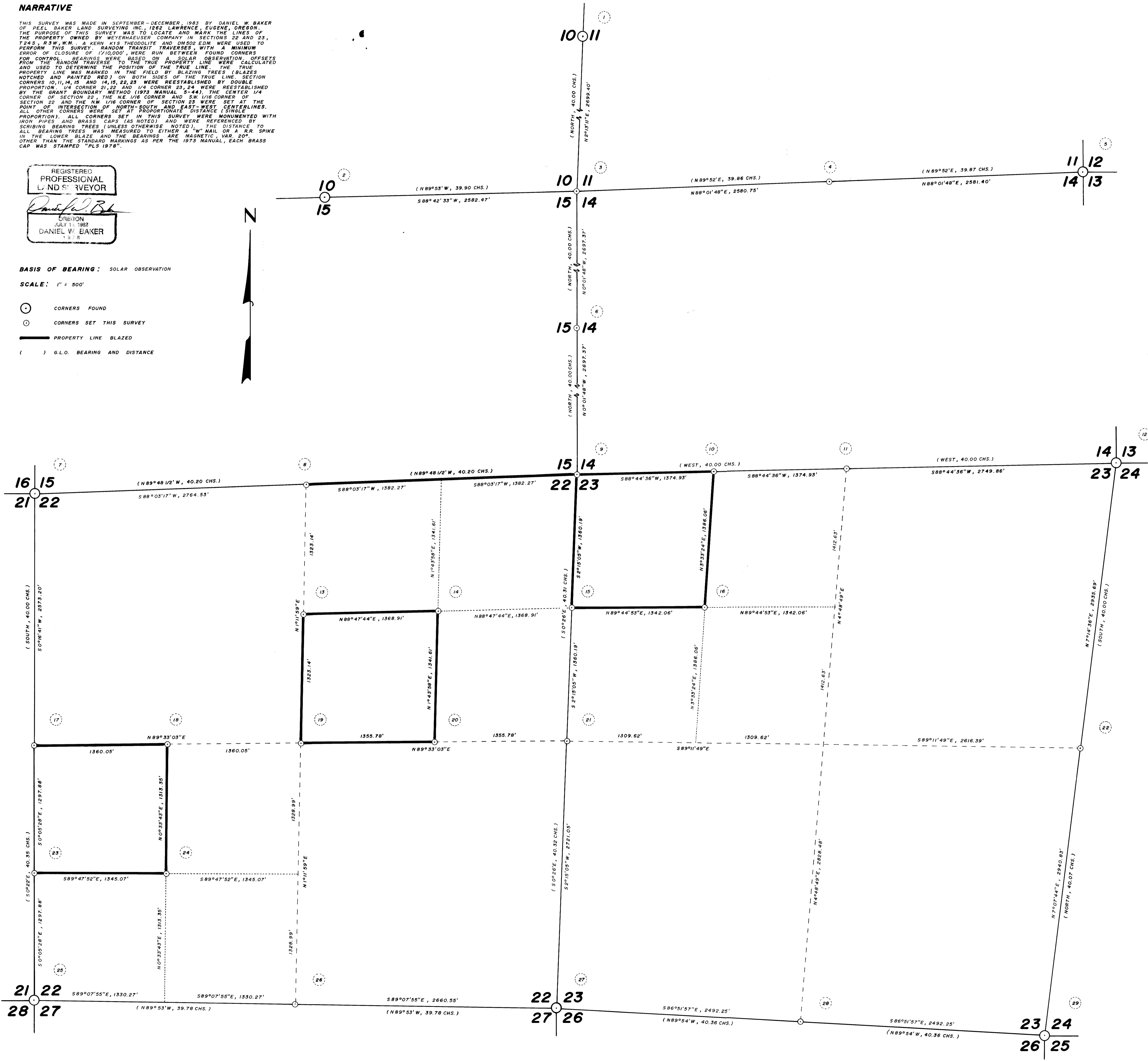
THIS SURVEY WAS MADE IN SEPTEMBER-DECEMBER 1983 BY DANIEL W. BAKER OF PEEL BAKER LAND SURVEYING INC., 1282 LAWRENCE, EUGENE, OREGON. THE PURPOSE OF THIS SURVEY WAS TO LOCATE AND MARK THE LINES OF THE PROPERTY OWNED BY WEYERHAEUSER COMPANY IN SECTIONS 22 AND 23, T24S, R3W, W.M. A KERN K15 THEODOLITE AND DMS02 EDM WERE USED TO PERFORM THIS SURVEY. RANDOM TRANSIT TRAVERSES, WITH A MINIMUM ERROR OF CLOSURE OF 1/10,000 WERE RUN BETWEEN FOUND CORNERS FOR CONTROL. BEARINGS WERE BASED ON A SOLAR OBSERVATION. OFFSETS FROM THE RANDOM TRAVERSES TO THE TRUE PROPERTY LINE WERE CALCULATED AND USED TO DETERMINE THE POSITION OF THE TRUE LINE. THE TRUE PROPERTY LINE WAS MARKED IN THE FIELD BY BLAZING TREES (BLAZES NOTCHED AND PAINTED RED) ON BOTH SIDES OF THE TRUE LINE. SECTION CORNERS 10, 11, 14, 15 AND 14, 15, 22, 23 WERE REESTABLISHED BY DOUBLE PROPORTION. 1/4 CORNER 21, 22 AND 1/4 CORNER 23, 24 WERE REESTABLISHED BY THE GRANT BOUNDARY METHOD (1973 MANUAL 5-441). THE CENTER 1/4 CORNER OF SECTION 22, THE NE 1/8 CORNER AND SW 1/8 CORNER OF SECTION 23 AND THE NW 1/8 CORNER OF SECTION 23 WERE SET AT THE POINT OF INTERSECTION OF NORTH-SOUTH AND EAST-WEST CENTERLINES. ALL OTHER CORNERS SET IN THIS SURVEY WERE MONUMENTED WITH IRON PIPES AND BRASS CAPS (AS NOTED) AND WERE REFERENCED BY SCRIBING BEARING TREES (UNLESS OTHERWISE NOTED). THE DISTANCE TO ALL BEARING TREES WAS MEASURED TO EITHER A "W" NAIL OR A BR SPIKE IN THE LOWER BLAZE AND THE BEARINGS ARE MAGNETIC, VAR. 20'. OTHER THAN THE STANDARD MARKINGS AS PER THE 1973 MANUAL, EACH BRASS CAP WAS STAMPED "PLS 1978".

REGISTERED
PROFESSIONAL
LAND SURVEYOR
Daniel W. Baker
OREGON
JULY 1, 1982
DANIEL W. BAKER
1978

BASIS OF BEARING: SOLAR OBSERVATION

SCALE: 1" = 500'

- CORNERS FOUND
- CORNERS SET THIS SURVEY
- PROPERTY LINE BLAZED
- () G.L.O. BEARING AND DISTANCE



CORNER DATA

- 1 1/4 CORNER 10 & 11
FOUND: 1 1/4" IRON PIPE WITH DOUGLAS CO. BRASS CAP "1987"
35" FIR STUMP, N21°10'12"E (dist. to RR nail) CS SCRIBING
13" CEDAR STUMP, N50W, 19.5' (dist. to "W" nail)-REVERSE SCRIBING
58" FIR STUMP, N54W, 54.9' (dist. to "W" nail)
- 2 1/4 CORNER 10 & 15
FOUND: 1 1/4" IRON PIPE WITH DOUGLAS CO. BRASS CAP "1987"
35" FIR STUMP, N29W, 15.8' (ctr. mark) ORIG. BT-NO MARKS
28" MAPLE, N45E, 11.5' (ctr. mark) DOUG. CO. BT-SCRIBE VIS.
14" FIR, N32 1/2°E, 9.4'
12" FIR, S18E, 5.6'
- 3 SECTION CORNER 10, 11, 14, 15
SET: 1 3/4" X 33" IRON PIPE WITH BRASS CAP
26" FIR, N27E, 11.3'
10" HEMLOCK, S23E, 45.5'
23" FIR, S23W, 45.4'
58" FIR STUMP, N20W, 27.4'
NOTE - 2" AL. PIPE SET BY WEYERHAEUSER CO. BEARS S30°27'17"W, 15.50'
- 4 1/4 CORNER 11 & 14
SET: 1 5/8" X 40" IRON PIPE WITH BRASS CAP
48" FIR STUMP, N31E, 75.9'
32" FIR STUMP, S30W, 43.6' (not scribed)
- 5 SECTION CORNER 11, 12, 13, 14
FOUND: 58" FIR STUMP, N50E, 66.5' (dist. to "W" nail)
11" HEMLOCK STUMP, S35E, 30.7' (dist. to "W" nail)
42" FIR STUB, S30 1/2°W, 48.5' (dist. to "W" nail)
43" FIR STUMP (20" high), N10W, 33.2' (dist. to "W" nail)
ORIG. SEC. 13.8' (not scribed) UPROOTED AND SLID DOWNHILL
CTR. OF ROOTS, S17E, 15.9' (RECORD-S17W)
SET: 2" X 36" IRON PIPE WITH BRASS CAP
- 6 1/4 CORNER 14 & 15
SET: 1 3/4" X 36" IRON PIPE WITH BRASS CAP
50" FIR STUMP, N24E, 27.7'
25" CEDAR, N44W, 45.6'
NOTE - 1/2" MONEL PIPE SET BY WEYER. CO. BEARS S42°12'56"W, 13.66'
- 7 SECTION CORNER 15, 16, 21, 22
FOUND: U.S.G.L.O. IRON PIPE WITH BRASS CAP "1950"
12" MAPLE, N100W, 12.8' (dist. to "W" nail)
8" MAPLE, N42 1/2°W, 21.5' (dist. to "W" nail)
SET: 10" FIR, S74E, 28.5'
9" FIR, S23W, 25.8'
- 8 1/4 CORNER 15 & 22
SET: 1 5/8" X 40" IRON PIPE WITH BRASS CAP
17" FIR, S1E, 21.5'
18" FIR, N76E, 7.3'
- 9 SECTION CORNER 14, 15, 22, 23
SET: 1 5/8" X 40" IRON PIPE WITH BRASS CAP
18" FIR, N7E, 35.1'
18" FIR, S38E, 23.8'
14" HEMLOCK, S80W, 33.1'
24" FIR, N46 1/2°W, 19.9'
- 10 W 1/8 CORNER 14 & 23
SET: 1 5/8" X 40" IRON PIPE WITH BRASS CAP
23" FIR, N42E, 27.4' (dist. to RR spike)
22" FIR, S5W, 35.3'
- 11 1/4 CORNER 14 & 23
SET: 2" X 36" IRON PIPE WITH BRASS CAP
14" FIR, N1E, 12.4'
21" FIR, S86E, 33.3'
- 12 SECTION CORNER 13, 14, 23, 24
FOUND: 1 1/4" IRON PIPE APPROX. 4' HIGH
50" FIR STUMP, N88E, 21.6' (dist. to "W" nail)
14" ROCKY HEMLOCK STUB (6" high), S10E, 25.1' (from ctr. of uproot hole)
(Old Weyer. Co. tag - scribings once visible, see notes of Y.R. Tracy, Douglas Co.)
SET: DROVE IN IRON PIPE TO 16" ABOVE GND. AND CEMENTED IN BRASS CAP
10" FIR, N29E, 7.4'
12" FIR, S35 1/2°E, 58.8'
15" FIR, S72 1/2°W, 18.1'
12" FIR, N55 1/2°W, 37.4'
- 13 C-N 1/8 CORNER SECTION 22
SET: 2" X 30" IRON PIPE WITH BRASS CAP
60" FIR, S85E, 30.0'
66" FIR, N29W, 41.8'
- 14 NE 1/8 CORNER SECTION 22
SET: 2" X 30" IRON PIPE WITH BRASS CAP
28" CEDAR, N72E, 28.4'
42" CEDAR, S18E, 11.1'
- 15 N 1/8 CORNER 22 & 23
SET: 1 5/8" X 40" IRON PIPE WITH BRASS CAP
43" CEDAR, S88E, 29.2'
17" HEMLOCK, S86W, 24.1'
- 16 NW 1/8 CORNER SECTION 23
SET: 1 3/8" X 36" IRON PIPE WITH BRASS CAP
10" HEMLOCK, N26E, 14.4'
13" CEDAR, S33E, 19.9'
- 17 1/4 CORNER 21 & 22
SET: 1 1/2" X 36" IRON PIPE WITH BRASS CAP
30" FIR, N88E, 34.8'
22" FIR, N24W, 32.8'
NOTE - 1" AL. PIPE SET BY WEYER. CO. BEARS N84°25'51"E, 13.47'
- 18 C-W 1/8 CORNER SECTION 22
SET: 1 3/4" X 33" IRON PIPE WITH BRASS CAP
15" HEMLOCK, N15E, 13.7'
15" CEDAR, S33E, 24.7'
- 19 CTR. 1/4 CORNER SECTION 22
SET: 1 5/8" X 40" IRON PIPE WITH BRASS CAP
23" CEDAR, N51E, 25.2'
27" FIR, S15W, 9.4'
NOTE - 1" AL. PIPE SET BY WEYER. CO. BEARS N67°52'58"E, 46.09'
- 20 C-E 1/8 CORNER SECTION 22
SET: 2" X 31" IRON PIPE WITH BRASS CAP
8" FIR, N27E, 22.9'
NOTE - 1" AL. PIPE SET BY WEYER. CO. BEARS N75°41'32"E, 64.74'
- 21 1/4 CORNER 22 & 23
SET: 2 1/2" X 36" IRON PIPE WITH BRASS CAP
8" FIR, N27E, 22.9'
NOTE - 1/2" MONEL PIPE SET BY WEYER. CO. BEARS N80°15'49"E, 82.32'
- 22 1/4 CORNER 23 & 24
SET: 2" X 30" IRON PIPE WITH BRASS CAP
12" FIR, N9E, 16.5'
11" FIR, S61W, 15.6'
- 23 S 1/8 CORNER 21 & 22
SET: 1 5/8" X 40" IRON PIPE WITH BRASS CAP
19" HEMLOCK, S78E, 31.8'
35" FIR STUMP, N31W, 29.4'
NOTE - 1" AL. PIPE SET BY WEYER. CO. BEARS S85°59'08"E, 10.69'
- 24 SW 1/8 CORNER SECTION 22
SET: 1 3/4" X 36" IRON PIPE WITH BRASS CAP
23" HEMLOCK, N51E, 37.2'
17" FIR, S75W, 28.3'
- 25 SECTION CORNER 21, 22, 27, 28
FOUND: 1 1/2" IRON PIPE
60" FIR STUMP, S41E, 30.6' (dist. to "W" nail)
60" FIR STUMP, S55W, 53.3' (dist. to "W" nail)
31" CEDAR, N57W, 56.2' (dist. to "W" nail)
SET: 14" FIR, N72E, 39.0'
- 26 1/4 CORNER 22 & 27
SET: 1 5/8" X 40" IRON PIPE WITH BRASS CAP
7" FIR, N88E, 6.9'
7" FIR, S47E, 14.7'
- 27 SECTION CORNER 22, 23, 26, 27
FOUND: 1 1/4" IRON PIPE WITH DOUGLAS CO. BRASS CAP
"1987"
48" FIR STUB, N33E, 25.0' (dist. to "W" nail)
24" FIR STUMP, S18E, 27.3' (dist. to "W" nail)
24" FIR STUMP, S89W, 16.0' (dist. to "W" nail)
20" FIR STUMP, N34W, 23.0' (dist. to "W" nail - scribings visible)
14" FIR, N3W, 69.5' (dist. to "W" nail - Douglas Co. BT)
- 28 1/4 CORNER 23 & 26
SET: 1 5/8" X 40" IRON PIPE WITH BRASS CAP
11" FIR, N5W, 13.4'
9" FIR, S84W, 16.6'
- 29 SECTION CORNER 23, 24, 25, 26
FOUND: 48" FIR STUB, N42E, 27.4' (dist. to RR spike)
28" HEMLOCK STUMP, S52E, 25.3' (some scribings vis. dist. to "W" nail)
42" FIR STUMP, S47W, 29.5' (dist. to "W" nail)
35" FIR STUMP, N31W, 29.4' (Dougl. Co. BT - scribings vis. dist. to "W" nail)
42" FIR STUMP, S50E, 42.2' (Dougl. Co. BT - scribings vis. dist. to "W" nail)
SET: 2" X 36" IRON PIPE WITH BRASS CAP
(set iron pipe from 3 original B.T.s. slope distance and face measure)
NOTE - NO TRACE OF DOUGLAS CO. CORNER MONUMENT

**SURVEY OF
SECTIONS 22 & 23, T24S, R3W, W.M.
DOUGLAS COUNTY, OREGON**
FOR
WEYERHAEUSER COMPANY
BY
PEEL BAKER LAND SURVEYING INC.
DECEMBER 8, 1983