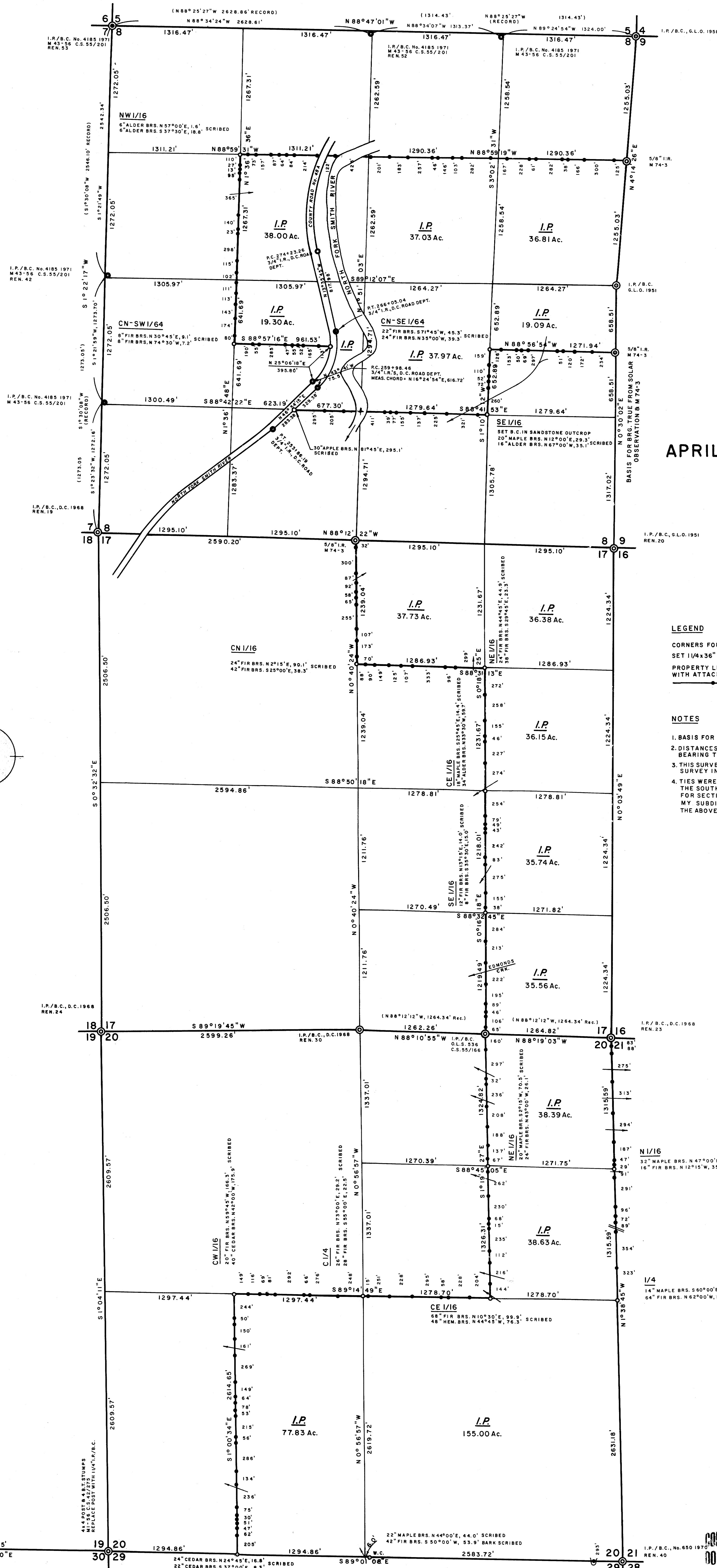


# PROPERTY SURVEY FOR INTERNATIONAL PAPER CO.

FILED *ds*  
RECEIVED *ds*  
APR 22 1983  
COUNTY SURVEYOR  
DOUGLAS COUNTY, ORE.  
*ds*

MAP FILE... 11-90-42



SECTIONS 8, 17 & 20  
T20S, R10W  
APRIL 1983 SCALE 1"=500'

### LEGEND

- CORNERS FOUND  $\odot$
- SET 1/4x3/16" I.P.'S/STAMPED BRASS CAPS (P.L.S. 497)  $\circ$
- PROPERTY LINES ESTABLISHED WITH 1/2x60" I.P.'S WITH ATTACHED ALUMINUM SIGNS

### NOTES

1. BASIS FOR BEARING, REFER TO THE EAST LINE OF SECTION 8
2. DISTANCES ARE TAKEN TO A 300' NAIL IN THE CENTER OF EACH BEARING TREE, UNLESS NOTED.
3. THIS SURVEY WAS MADE IN ACCORDANCE WITH B.L.M. MANUAL OF SURVEY INSTRUCTIONS.
4. TIES WERE MADE TO THE NORTH 1/4, EAST 1/16, WEST 1/4 AND THE SOUTH 1/16 CORNERS AS ESTABLISHED IN 1971, M 43-56, FOR SECTION 8, BUT THEIR POSITIONS WERE NOT USED FOR MY SUBDIVISION OF SAID SECTION 8. CALCULATED POSITIONS FOR THE ABOVE CORNERS WERE USED FOR THE SUBDIVISION.

REGISTERED  
PROFESSIONAL  
LAND SURVEYOR  
*Richard J. Hintz*  
OREGON  
RICHARD J. HINTZ  
497

MAP FILE... 11-90-42