

SURVEY FOR INTERNATIONAL PAPER CO.

IN SECTIONS 29, 30, N 1/2 31, N 1/2 32, T23S, R7W,
WILLAMETTE MERIDIAN, DOUGLAS COUNTY,
OREGON

COUNTY SURVEYORS FILE DATA
DO NOT REMOVE FROM OFFICE

FILED *BJ*
RECEIVED *BJ*
MAR 29 1963
COUNTY SURVEYOR
DOUGLAS COUNTY, ORE.
BJ

SECTION CORNER 24 | 19
25 | 30

ED 2 1/2" IRON PIPE, W/ 3" BRASS CAP (BLM)
MARKED AS SHOWN,
NO B.T.'S FOUND
1964

WITNESS CORNER TO N 1/4 CORNER
ED 2" IRON PIPE (BENTZ) - LOOKS TO HAVE HAD
BRASS CAP FROM DRILL HOLE IN TOP

SECTION CORNER 19 | 20
20 | 29

ED BRASS CAP MARKED AS SHOWN FROM WHICH
ED 15" FIR BEARS N80°44'E 17.8 FT.
ED 12" FIR BEARS S83°40'E 27.1 FT.
ED 17" FIR BEARS N86°32'W 40.2 FT.
ED 17" FIR BEARS S25°W 16.5 FT.

SECTION CORNER 20 | 21
29 | 28

ED BRASS CAP MARKED AS SHOWN FROM WHICH
ED 22" OAK BEARS N65°1/2'E 124.1 FT.
ED 20" TWIN OAK BEARS S11°1/2'E 12.6 FT.
ED 28" OAK BEARS N89°W 71.9 FT (REC. 28")
ED 28" OAK BEARS S75°W 123.4 FT. (REC. 28")

NARRATIVE

SURVEY WAS MADE TO ESTABLISH INTERNATIONAL PAPER CO. PROPERTY LINE AND TO MONUMENT AND POST THE LINES AS DEPICTED HEREON. ALL WORK WAS COORDINATED WITH BLM WHO HAS RECENTLY COMPLETED WORK IN THE AREA.
THE SECTION CORNER COMMON TO SECTIONS 29, 30, 31 & 32 WAS ESTABLISHED BY BLM AND FOUND TO BE WITHIN 0.30 FT. OF OUR DOUBLE PROPORTION.
IN SECTION 30, A STRIP BETWEEN 23 FT. AND 27 FT. WIDE WAS FOUND TO EXIST BETWEEN PARCELS OWNED BY MADISON AND DEED CALLS ON ADJACENT PROPERTIES CALL OUT 20 CHAINS AS BEGINNING POINT INSTEAD OF 1/4 LINE.
POSTING ALONG THE COUNTY ROAD WAS DONE USING THE CENTERLINE OF THE TRAVELLED WAY SINCE RECORDS OF THE RIGHT-OF-WAY ARE VAGUE.
FIELD CREW WAS D. DELATTE, T. MONTGOMERY, K. FLEUTSCH. COMPUTATIONS BY D. BENTZ. DRAFTING BY D. HOPKINS.
BASIS OF BEARINGS: SOLAR OBSERVATION.

LEGEND:

- - SET 1" x 36" IRON PIPE WITH BRASS CAP MKD AS SHOWN. PIPE SET IN CONCRETE, UNLESS NOTED OTHERWISE.
- - FOUND MONUMENT AS NOTED
- - COMPUTED POINT
- - SET 1/2" x 60" IRON ROD WITH BOUNDARY SIGN MARKED "PROPERTY LINE INTERNATIONAL PAPER CO. CARBONER, OREGON" SIGN FACE I.P. PROPERTY
- LINE FLAGGED WITH RED RIBBON & TREES BLAZED
- - - FENCE LINE

SECTION CORNER 28 | 27
33 | 34

ED 2 1/2" IRON PIPE, W/ 3" BRASS CAP (BLM)
MARKED AS SHOWN, FROM WHICH
ED 18" MADRONE BEARS S18°W - 42.2 FT.
ED 26" FIR BEARS N84°W - 97.7 FT.
ED 21" HEMLOCK BEARS S80°W - 99.0 FT.
1961

SHEET 1 OF 2

REGISTERED
PROFESSIONAL
LAND SURVEYOR

OREGON
JULY 12, 1968
DONALD A. BENTZ
833

SURVEY BY:

DONALD BENTZ, SURVEYOR, INC.
P.O. BOX 901, WINCHESTER, OREGON 97495
503 673-6796

SCALE: 1" = 500'
FEBRUARY 1983

1/16 CORNER 30 | 31
ED BRASS CAP FROM WHICH
ED 24" FIR BEARS N43°34'W - 11.2 FT.
ED 12" FIR BEARS N20°W - 12.2 FT.
1962

1/4 CORNER 30 | 31
ED BRASS CAP FROM WHICH
ED 12" FIR BEARS N43°34'W - 11.2 FT.
ED 10" FIR BEARS N51°W - 16.8 FT.
ED 15" FIR BEARS S70°25'E - 10.8 FT.
ED 18" FIR BEARS S52°E - 17.8 FT.
1962

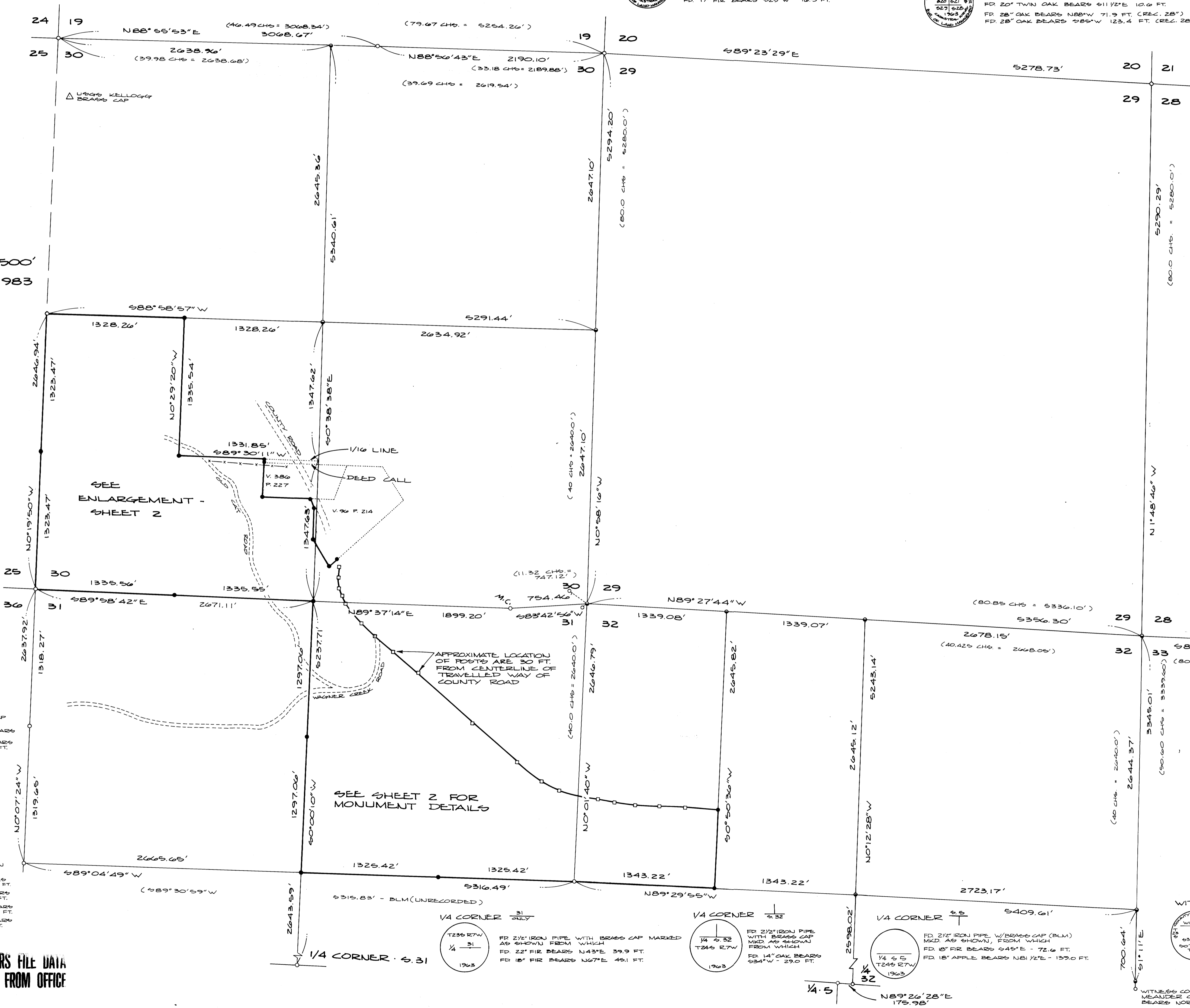
1/4 CORNER 31 ONLY
ED 2 1/2" IRON PIPE WITH BRASS CAP MARKED AS SHOWN FROM WHICH
ED 22" FIR BEARS N43°E 39.9 FT.
ED 18" FIR BEARS N67°E 45.1 FT.
1963

1/4 CORNER 32
ED 2 1/2" IRON PIPE WITH BRASS CAP MKD AS SHOWN FROM WHICH
ED 14" OAK BEARS S24°W - 29.0 FT.
1963

1/4 CORNER 33
ED 2 1/2" IRON PIPE, W/ BRASS CAP (BLM) MKD AS SHOWN, FROM WHICH
ED 8" FIR BEARS S45°E - 72.6 FT.
ED 18" APPLE BEARS N81°1/2'E - 139.0 FT.
1963

WITNESS CORNER TO MEANDER CORNER
ED 1 1/2" IRON PIPE W/ BRASS CAP MKD AS SHOWN, FROM WHICH
ED 15" D FIR BEARS S53°W - 77.4 FT.
1962

WITNESS CORNER - MEANDER CORNER BEARS NORTH 50.00'
1962



COUNTY SURVEYORS FILE DATA
DO NOT REMOVE FROM OFFICE