

**N.W. CORNER SECTION 4**  
 FD. 1953 G.L.O. BRASS CAP  
 36" FIR STUB, N 29°E, 22.0' (SCRIBE VIS.), 1877 B.T.  
 63" FIR SNAG, S 33°W, 121.2' (NO MARKS), 1877 B.T.  
 68" FIR, S 33°E, 76.6' (SCAR VIS.), 1877 B.T.  
 16" FIR, N 42°E, 62.2' (SCAR VIS.), 1953 B.T.  
 38" HEMLOCK, N 29°W, 79.7' (SCRIBE VIS.), 1953 B.T.

**WEST 1/16 CORNER SECTION 4 ONLY**  
 FD. 1966 B.L.M. BRASS CAP  
 13" FIR, S 22°E, 18.8' (SCAR VIS.), 1966 B.T.  
 26" FIR, S 68°W, 57.6' (SCAR VIS.), 1966 B.T.

**NORTH 1/4 CORNER SECTION 4 ONLY**  
 FD. 1966 B.L.M. BRASS CAP  
 7" FIR, S 4°E, 46.3' (SCAR VIS.), 1966 B.T.  
 22" FIR, S 50°W, 10.3' (SCAR VIS.), 1966 B.T.

**SOUTH 1/4 CORNER SECTION 33 ONLY**  
 FD. 1953 G.L.O. BRASS CAP  
 13" FIR, S 54°E, 2.8' (SCAR VIS.), 1953 B.T.  
 18" FIR, N 18°E, 5.1' (SCAR VIS.), 1953 B.T.

**EAST 1/16 CORNER SECTION 4 ONLY**  
 FD. 1966 B.L.M. BRASS CAP  
 8" CEDAR, S 14°E, 22.9' (SCAR VIS.), 1966 B.T.  
 18" HEMLOCK, S 60°W, 25.3' (SCAR VIS.), 1966 B.T.

**EAST 1/16 CORNER SECTION 33 ONLY**  
 FD. 1966 B.L.M. BRASS CAP  
 28" MAPLE, N 72°E, 26.3' (SCAR VIS.), 1966 B.T.  
 32" HEMLOCK, N 59°W, 13.9' (SCAR VIS.), 1966 B.T.

**"A" NORTH 1/16 CORNER**  
 SET 1/2" x 36" IRON PIPE & BRASS CAP  
 14" HEMLOCK, S 37°W, 89.6' (SCRIBED)  
 32" CEDAR, S 62°E, 12.4' (SCRIBED)

**"B" N.W. 1/16 CORNER**  
 SET 1/2" x 36" IRON PIPE & BRASS CAP  
 INCORRECT COR. BEARS N 30° 20' 19" E, 22.70'  
 10" FIR, N 56°E, 14.6' (SCRIBED)  
 16" FIR, S 3°E, 1.8' (SCRIBED)  
 1 REPLACED INCORRECTLY SET PIPE WITH  
 1/2" x 30" IRON ROD (BURIED 1.0')

**"C" C.W. 1/16 CORNER**  
 SET 1/2" x 36" IRON PIPE & BRASS CAP  
 INCORRECT COR. BEARS N 30° 20' 19" E, 45.40'  
 17" ALDER, N 44°W, 49.7' (BARK SCRIBED)  
 30" ALDER, N 41°E, 44.3' (BARK SCRIBED)  
 1 REPLACED INCORRECTLY SET PIPE WITH  
 1/2" x 30" IRON ROD (BURIED 1.0')

**"D" CENTER 1/4 CORNER**  
 SET 1/2" x 36" IRON PIPE & BRASS CAP  
 INCORRECT COR. BEARS N 30° 20' 19" E, 90.81'  
 32" FIR, S 47°W, 36.3' (SCRIBED)  
 56" FIR, N 30°E, 21.2' (SCRIBED)  
 1 REPLACED INCORRECTLY SET PIPE WITH  
 1/2" x 30" IRON ROD (BURIED 1.0')

**"E" C.E. 1/16 CORNER**  
 SET 1/2" x 36" IRON PIPE & BRASS CAP  
 INCORRECT COR. BEARS N 30° 20' 20" E, 63.88'  
 NO B.T.'S SET  
 1 REPLACED INCORRECTLY SET PIPE WITH  
 1/2" x 30" IRON ROD (BURIED 1.0')

**"G" C.S. 1/16 CORNER**  
 SET 1/2" x 36" IRON PIPE & BRASS CAP  
 INCORRECT COR. BEARS N 30° 20' 18" E, 45.40'  
 16" FIR, N 10°W, 19.0' (SCRIBED)  
 32" FIR, N 69°W, 11.3' (SCRIBED)  
 1 REPLACED INCORRECTLY SET PIPE WITH  
 1/2" x 30" IRON ROD (BURIED 1.0')

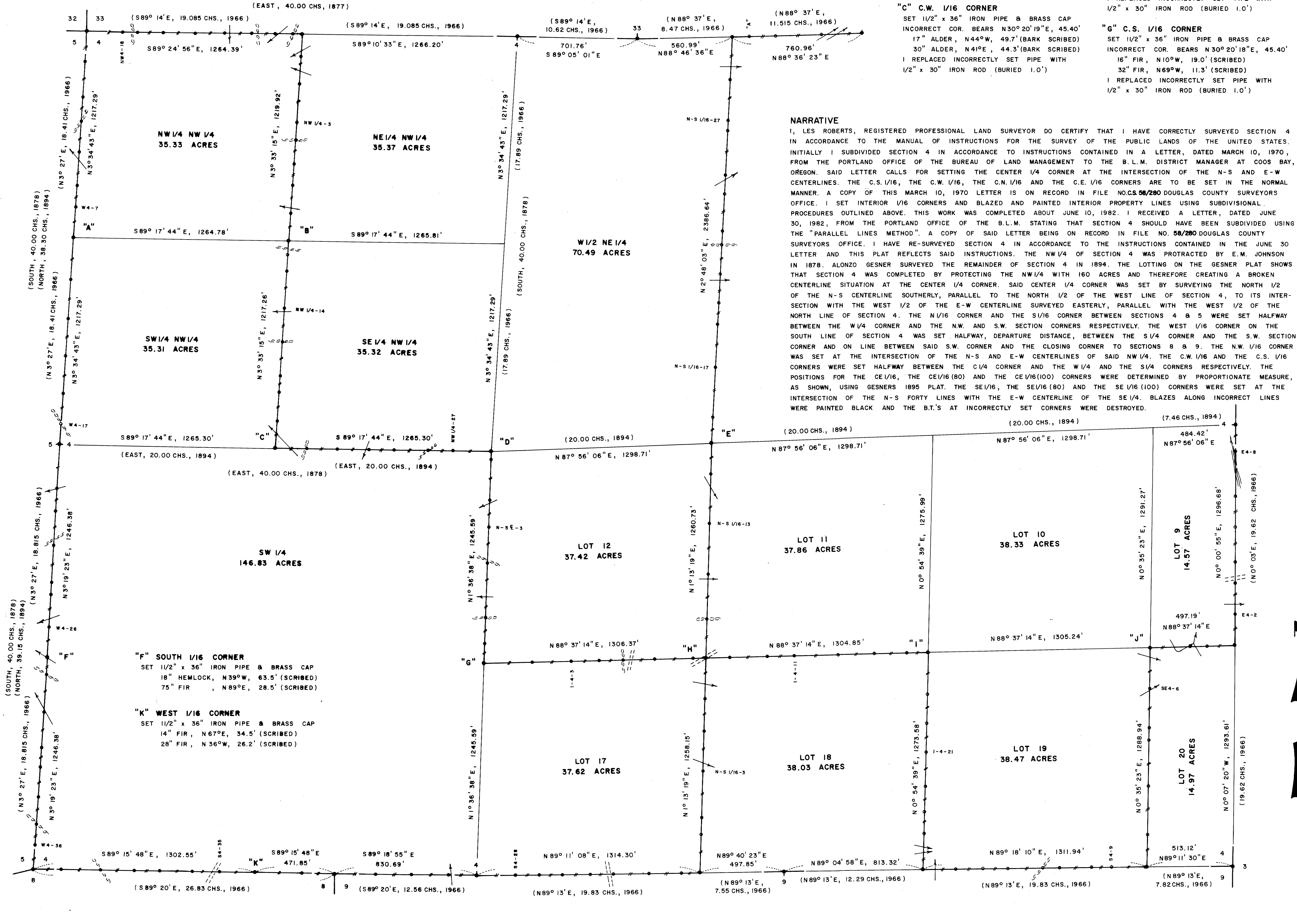
**"H" S.E. 1/16 CORNER**  
 SET 1/2" x 36" IRON PIPE & BRASS CAP  
 INCORRECT COR. BEARS N 30° 17' 57" E, 31.95'  
 17" HEMLOCK, N 81°E, 138.0' (SCRIBED)  
 52" FIR, S 15°E, 91.5' (SCRIBED)  
 1 REPLACED INCORRECTLY SET PIPE WITH  
 1/2" x 30" IRON ROD (BURIED 1.0')

**"I" S.E. 1/16 (80) CORNER**  
 SET 1/2" x 36" IRON PIPE & BRASS CAP  
 INCORRECT COR. BEARS N 30° 14' 20" E, 18.52'  
 16" HEMLOCK, N 46°W, 36.3' (SCRIBED)  
 28" CEDAR, S 9°E, 31.4' (SCRIBED)  
 1 REPLACED INCORRECTLY SET CAP WITH  
 R.R. SPIKE DRIVEN IN SANDSTONE LEDGE

**"J" S.E. 1/16 (100) CORNER**  
 SET 1/2" x 36" IRON PIPE & BRASS CAP  
 INCORRECT COR. BEARS N 29° 52' 09" E, 5.09'  
 12" HEMLOCK, S 63°E, 57.3' (SCRIBED)  
 16" HEMLOCK, N 8°W, 23.6' (SCRIBED)  
 1 REPLACED INCORRECTLY SET PIPE WITH  
 1/2" x 30" IRON ROD (BURIED 1.0')

**COUNTY SURVEYORS FILE DATA**  
**DO NOT REMOVE FROM OFFICE**

FILED RECEIVED  
 FEB 11 1983  
 COUNTY SURVEYOR  
 DOUGLAS COUNTY, ORE.



**LOCATION OF 1/2" IRON RODS**

W 1/16 COR.	W 1/16 COR.	E 1/16 (100)
NW 4-8 55' WEST	NW 1/4-1 132' SOUTH	NW 4-2 190' NORTH
NW 4-9 159' WEST	NW 1/4-2 296' SOUTH	SE 4-3 477' NORTH
NW 4-11 294' WEST	NW 1/4-3 520' SOUTH	SE 4-4 745' NORTH
NW 4-12 455' WEST	NW 1/4-4 623' SOUTH	SE 4-5 814' NORTH
NW 4-14 629' WEST	NW 1/4-6 767' SOUTH	SE 4-6 1049' NORTH
NW 4-15 814' WEST	NW 1/4-7 890' SOUTH	SE 1/16 (100) 1289' NORTH
NW 4-16 966' WEST	NW 1/4-8 1053' SOUTH	SE 4-10 236' EAST
NW 4-18 1055' WEST	NW 1/16 COR. 1220' SOUTH	SE 4-11 332' EAST
N.W. COR. 1264' WEST	NW 1/4-12 1298' SOUTH	S 1/16 COR. 497' EAST
W 4-1 186' SOUTH	NW 1/4-13 1389' SOUTH	E 4-2 182' NORTH
W 4-2 389' SOUTH	NW 1/4-14 1609' SOUTH	E 4-3 366' NORTH
W 4-4 536' SOUTH	NW 1/4-15 1811' SOUTH	E 4-5 490' NORTH
W 4-5 715' SOUTH	NW 1/4-17 2011' SOUTH	E 4-6 696' NORTH
W 4-6 910' SOUTH	NW 1/4-18 2103' SOUTH	E 4-7 877' NORTH
W 4-7 1036' SOUTH	NW 1/4-19 2276' SOUTH	E 4-8 1139' NORTH
N 1/16 COR. 1217' SOUTH	CW 1/16 COR. 2437' SOUTH	E 1/4 COR. 1297' NORTH
W 4-11 1464' SOUTH	NW 1/4-21 184' EAST	
W 4-13 1696' SOUTH	NW 1/4-23 362' EAST	
W 4-15 1913' SOUTH	NW 1/4-24 548' EAST	E 1/16 COR.
W 4-16 2133' SOUTH	NW 1/4-25 696' EAST	N-S 1/16-1 221' NORTH
W 4-17 2312' SOUTH	NW 1/4-26 895' EAST	N-S 1/16-2 319' NORTH
W 1/4 COR. 2435' SOUTH	NW 1/4-27 1041' EAST	N-S 1/16-3 592' NORTH
W 4-20 249' SOUTH	C 1/4 COR. 1265' EAST	N-S 1/16-4 825' NORTH
W 4-21 382' SOUTH	N-S E-1 49' SOUTH	N-S 1/16-6 1016' NORTH
W 4-23 597' SOUTH	N-S E-2 288' SOUTH	SE 1/16 COR. 1258' NORTH
W 4-24 806' SOUTH	N-S E-3 442' SOUTH	N-S 1/16-11 1484' NORTH
W 4-25 873' SOUTH	N-S E-4 657' SOUTH	N-S 1/16-12 1750' NORTH
W 4-26 1068' SOUTH	N-S E-6 975' SOUTH	N-S 1/16-13 2046' NORTH
S 1/16 COR. 1246' SOUTH	N-S E-8 1124' SOUTH	N-S 1/16-14 2340' NORTH
W 4-29 1343' SOUTH	CS 1/16 COR. 1246' SOUTH	CE 1/16 COR. 2519' NORTH
W 4-30 1568' SOUTH	I-4-1 288' EAST	N-S 1/16-16 152' NORTH
W 4-31 1775' SOUTH	I-4-2 516' EAST	N-S 1/16-17 443' NORTH
W 4-32 1890' SOUTH	I-4-3 680' EAST	N-S 1/16-18 699' NORTH
W 4-33 2066' SOUTH	I-4-4 822' EAST	N-S 1/16-20 825' NORTH
W 4-35 2223' SOUTH	I-4-6 1006' EAST	N-S 1/16-21 997' NORTH
W 4-36 2348' SOUTH	I-4-7 1232' EAST	N-S 1/16-22 1163' NORTH
S.W. COR. 2493' SOUTH	SE 1/16 COR. 1306' EAST	N-S 1/16-23 1244' NORTH
	I-4-9 1442' EAST	N-S 1/16-24 1462' NORTH
	I-4-10 1668' EAST	N-S 1/16-25 1578' NORTH
E 1/16 COR.	S 4-21 109' WEST	N-S 1/16-26 1832' NORTH
	S 4-22 300' WEST	N-S 1/16-27 1895' NORTH
	S 4-23 509' WEST	I-4-14 2296' EAST
	S 4-24 643' WEST	I-4-15 2485' EAST
	S 4-26 808' WEST	SE 1/16 (80) 2611' EAST
	S 4-27 947' WEST	I-4-19 247' SOUTH
	S 4-28 1086' WEST	I-4-20 413' SOUTH
	S 1/4 COR. 1314' WEST	I-4-21 585' SOUTH
	S 4-29 162' WEST	I-4-22 783' SOUTH
	S 4-30 382' WEST	I-4-23 935' SOUTH
	S 4-32 591' WEST	I-4-24 1059' SOUTH
	C.C. 831' WEST	E 1/16 (80) 1274' SOUTH
	S 4-33 193' WEST	S 4-2 191' EAST
	W 1/16 COR. 472' WEST	S 4-3 352' EAST
	S 4-35 676' WEST	S 4-4 500' EAST
	S 4-37 835' WEST	S 4-6 703' EAST
	S 4-38 1024' WEST	S 4-7 804' EAST
	S 4-39 1176' WEST	S 4-8 990' EAST
	S 4-40 1374' WEST	S 4-9 1111' EAST
	S 4-41 1605' WEST	E 1/16 (100) 1312' EAST
	S.W. COR. 1774' WEST	

**S.W. CORNER SECTION 4**  
 FD. 1966 B.L.M. BRASS CAP  
 30" FIR SNAG, S 87°W, 36.8' (NO MARKS), 1878 B.T.  
 52" FIR SNAG, N 43°W, 91.5' (SCRIBE VIS.), 1878 B.T.  
 66" FIR, S 46°E, 81.6' (SCAR VIS.), 1878 B.T.  
 19" FIR, N 77°E, 4.5' (SCAR VIS.), 1966 B.T.  
 19" FIR, N 40°W, 23.5' (SCAR VIS.), 1966 B.T.

**WEST 1/4 CORNER SECTION 4**  
 FD. 1966 B.L.M. BRASS CAP  
 22" MAPLE, S 50°E, 46.7' (SCAR VIS.), 1966 B.T.  
 36" FIR, S 57°W, 40.0' (SCAR VIS.), 1966 B.T.

**CLOSING CORNER SECTIONS 8 & 9**  
 FD. 1966 B.L.M. BRASS CAP  
 63" FIR STUMP, S 64°E, 102.2' (SCAR VIS.), 1894 B.T.  
 22" FIR STUMP, S 81°W, 14.5' (SCAR VIS.), 1966 B.T.  
 22" CEDAR, S 10°E, 26.9' (SCAR VIS.), 1966 B.T.

**SOUTH 1/4 CORNER SECTION 4 ONLY**  
 FD. 1966 B.L.M. BRASS CAP & STONE MARKED "C.S."  
 38" FIR, N 56°E, 29.4' (SCRIBE VIS.), 1894 B.T.  
 29" FIR SNAG, S 25°E, 11.9' (SCAR VIS.), NO RECORD  
 46" FIR, N 17°W, 39.8' (SCAR VIS.), 1966 B.T.

**EAST 1/16 CORNER SECTION 4 ONLY**  
 FD. 1966 B.L.M. BRASS CAP  
 24" ALDER, N 17°W, 68.0' (BARK SCRIBED), 1966 B.T.  
 32" HEMLOCK, N 20°E, 30.5' (SCAR VIS.), 1966 B.T.

**NORTH 1/4 CORNER SECTION 9 ONLY**  
 FD. 1966 B.L.M. BRASS CAP  
 14" HEMLOCK, S 34°W, 38.5' (SCAR VIS.), 1966 B.T.  
 18" HEMLOCK, S 34°W, 38.5' (SCAR VIS.), 1966 B.T.

**EAST 1/16 (80) CORNER SECTION 4 ONLY**  
 FD. 1966 B.L.M. BRASS CAP  
 17" ALDER, N 3°W, 55.4' (BARK SCRIBED), 1966 B.T.  
 26" ALDER, N 33°E, 39.1' (BARK SCRIBED), 1966 B.T.

**EAST 1/16 (100) CORNER SECTION 4 ONLY**  
 FD. 1966 B.L.M. BRASS CAP  
 9" CEDAR, N 68°E, 17.4' (SCAR VIS.), 1966 B.T.  
 13" HEMLOCK, EAST, 14.5' (SCAR VIS.), NO RECORD  
 21" HEMLOCK, N 2°W, 7.0' (SCAR VIS.), 1966 B.T.

**CLOSING CORNER SECTIONS 4 & 9**  
 FD. 1966 B.L.M. BRASS CAP  
 30" MAPLE, N 79°W, 34.6' (SCAR VIS.), 1966 B.T.

**SOUTH 1/16 CORNER SECTION 4 ONLY**  
 FD. 1966 B.L.M. BRASS CAP  
 11" HEMLOCK, S 81°W, 5.0' (SCAR VIS.), 1966 B.T.  
 11" HEMLOCK, N 74°W, 23.8' (SCAR VIS.), 1966 B.T.

**EAST 1/4 CORNER SECTION 4 ONLY**  
 FD. 1966 B.L.M. BRASS CAP  
 19" CEDAR, N 5°W, 15.6' (SCAR VIS.), 1966 B.T.  
 21" ALDER, N 50°E, 8.0' (BARK SCRIBED), 1966 B.T.

**LEGEND**

- CORNERS FOUND AND USED FOR CONTROL
- CORNERS SET, 1/2" x 36" IRON PIPES WITH BRASS CAPS. CAPS STAMPED S-T-R, DATE AND P.L.S. NO. 1039
- LINES MARKED WITH RED PAINTED BLAZES, 1/2" x 60" IRON RODS AND RED RIBBON. A YELLOW PROPERTY LINE SIGN, WITH P.L.S. NO. 1039 STAMPED UPON, IS ATTACHED TO EACH ROD.
- ( ) DATA OF RECORD, 1877, 1878, 1894, 1953 AND 1966 G.L.O. SURVEYS.
- BASIS OF BEARING, SOLAR OBSERVATION
- DISTANCE TO BEARING TREES ARE CENTER MEASURE
- ALL NEW BEARING TREES ARE SCRIBED
- SCALE 1" = 300'

**COUNTY SURVEYORS FILE DATA**  
**DO NOT REMOVE FROM OFFICE**

C.S. File 58/280 (w)  
 Map File M 90-36