

Resurvey of NE 1/4 Section 17 & Resurvey and Subdivision of Section 9, T31S, R7W, W.M., Oregon

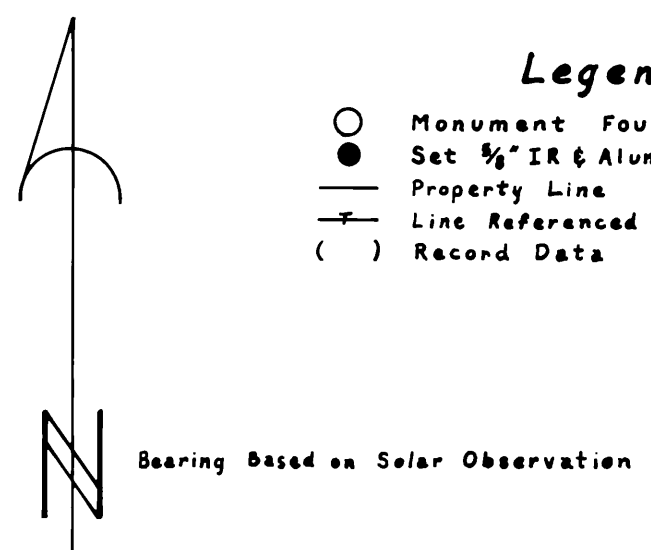
Scale: 1"=400'

December 20, 1982

I ran a closed traverse in Section 9 and the NE 1/4 of Section 17 using a Jena 1 second theodolite and a Mac I-E EDM. I achieved a precision of 1:24,411 and adjusted the traverse by the Crandall method. I set the corner to Sections 8, 9, 16 & 17 by double proportionate measurement and the other corners by standard subdivision procedure based on the location of the existing monuments.

Howard W. Johnstone P.O. Box 1088 Roseburg, Oregon

- Legend**
- Monument Found
 - Set 3/8" IR & Alum. Cap Marked "LS 498"
 - Property Line
 - Line Referenced to Alum. Tags
 - () Record Data



REGISTERED
PROFESSIONAL
LAND SURVEYOR

Howard W. Johnstone

OREGON
MAY 13, 1980
HOWARD W. JOHNSTONE
498

