

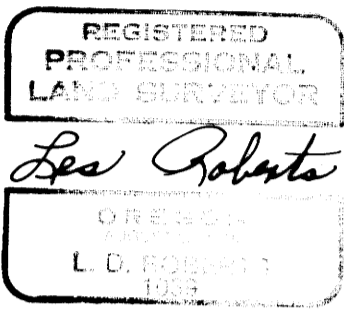
**NARRATIVE**  
I, LES ROBERTS, REGISTERED PROFESSIONAL LAND SURVEYOR DO CERTIFY THAT I HAVE CORRECTLY SURVEYED SECTION 20 IN ACCORDANCE TO THE MANUAL OF INSTRUCTIONS FOR THE SURVEY OF THE PUBLIC LANDS OF THE UNITED STATES. THE CENTER 1/4 CORNER WAS SET AT THE INTERSECTION OF THE N-S AND E-W CENTERLINES OF SECTION 20. THE NORTH 1/16 CORNER BETWEEN SECTIONS 20 AND 21 AND THE SOUTH 1/16 CORNER BETWEEN SECTIONS 20 AND 21 WERE SET HALFWAY BETWEEN THE EAST 1/4 CORNER OF SECTION 20 AND THE N.E. CORNER AND THE S.E. CORNER OF SECTION 20 RESPECTIVELY. THE SOUTH 1/16 CORNER BETWEEN SECTIONS 19 AND 20 AND THE WEST 1/16 CORNER BETWEEN SECTIONS 20 AND 29 WERE SET HALFWAY BETWEEN THE S.W. CORNER OF SECTION 20 AND THE WEST 1/4 CORNER AND THE SOUTH 1/4 CORNER OF SECTION 20 RESPECTIVELY. THE C.E. 1/16 CORNER WAS SET HALFWAY BETWEEN THE CENTER 1/4 CORNER AND THE EAST 1/4 CORNER OF SECTION 20. THE C.W. 1/16 CORNER WAS SET HALFWAY BETWEEN THE CENTER 1/4 CORNER AND THE WEST 1/4 CORNER OF SECTION 20. THE N.E. 1/16 CORNER OF SECTION 20 WAS SET AT THE INTERSECTION OF THE N-S AND E-W CENTERLINES OF SAID N.E. 1/4. THE S.W. 1/16 CORNER OF SECTION 20 WAS SET AT THE INTERSECTION OF THE N-S AND E-W CENTERLINES OF SAID S.W. 1/4. A CLOSED MEANDER TRANSIT AND E.D.M. TRAVERSE WAS RUN BETWEEN ALL FOUND CORNERS AND USED FOR CONTROL. A CLOSED MEANDER TRANSIT AND CHAIN TRAVERSE WAS RUN ALONG ALL BLAZED AND POSTED PROPERTY LINES AS SHOWN. OFFSETS WERE COMPUTED FROM THIS MEANDER TRAVERSE TO THE TRUE PROPERTY LINE.

**EAST 1/4 CORNER**  
FD. 1953 G.L.O. BRASS CAP  
10" FIR, S 19° E, 20.4' (SCAR VIS.), 1953 B.T.  
28" FIR, N 85° W, 20.9' (SCAR VIS.), 1953 B.T.

**N.E. SECTION CORNER**  
FD. 1953 G.L.O. BRASS CAP  
23" FIR STUMP, S 79° E, 18.1' (NO MARKS), 1891 B.T.  
28" FIR STUMP, S 7° W, 9.4' (NO MARKS), 1891 B.T. (1953, 50" DEAD SNAG)  
42" FIR STUMP, N 28° E, 38.3' (NO MARKS), 1891 B.T.  
20" FIR STUMP, S 70° W, 91.4' (NO MARKS), 1953 B.T.  
36" FIR STUMP, S 53° E, 69.5' (NO MARKS), 1953 B.T.  
36" FIR STUMP, N 19° W, 58.3' (NO MARKS), 1953 B.T.

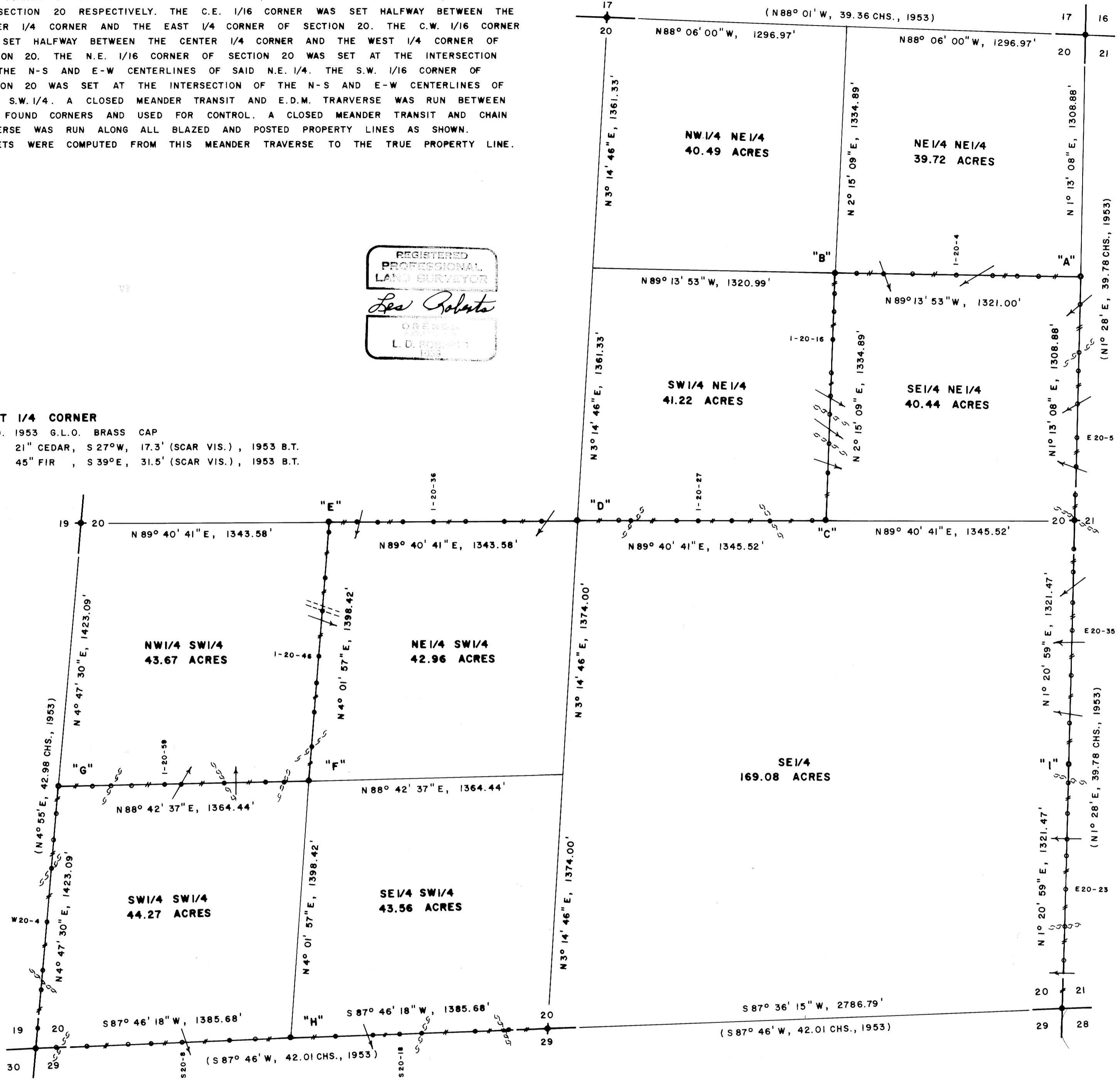
**NORTH 1/4 CORNER**  
FD. 1953 G.L.O. BRASS CAP  
52" FIR STUMP, S 76° W, 29.2' (SCRIBE VIS.), 1953 B.T.  
56" FIR STUMP, N 64° W, 32.9' (TO SPIKE), 1974 C.S.B.O.

**WEST 1/4 CORNER**  
FD. 1953 G.L.O. BRASS CAP  
21" CEDAR, S 27° W, 17.3' (SCAR VIS.), 1953 B.T.  
45" FIR, S 39° E, 31.5' (SCAR VIS.), 1953 B.T.



**SURVEY OF**  
SECTION 20, T20S, R9 W, W.M.  
DOUGLAS COUNTY, OREGON  
FOR  
INTERNATIONAL PAPER COMPANY  
BY  
ROBERTS SURVEYING INC.  
29 WEST 29TH STREET  
EUGENE, OREGON 97405  
DECEMBER 3, 1982

**LEGEND**  
● CORNERS FOUND AND USED FOR CONTROL  
○ CORNERS SET, 1/2" x 36" IRON PIPES WITH BRASS CAPS. CAPS STAMPED S-T-R, DATE AND P.L.S. NO. 1039.  
— LINE MARKED WITH RED PAINTED BLAZES, 1/2" x 60" IRON RODS AND RED RIBBON. A YELLOW PROPERTY LINE SIGN, WITH P.L.S. NO. 1039 STAMPED UPON, IS ATTACHED TO EACH ROD.  
( ) DATA OF RECORD, 1953 G.L.O. SURVEY  
BASIS OF BEARING, SOLAR OBSERVATION  
DISTANCE TO BEARING TREES ARE CENTER MEASURE  
ALL NEW BEARING TREES ARE SCRIBED  
SCALE 1" = 400'



**LOCATION OF 1/2" IRON RODS**

E 1/4 COR.		SW 1/6 COR.			
E 20-2	138'	NORTH	I-20-53	133'	WEST
E 20-3	290'	NORTH	I-20-54	236'	WEST
E 20-5	445'	NORTH	I-20-56	455'	WEST
E 20-7	627'	NORTH	I-20-58	690'	WEST
E 20-8	804'	NORTH	I-20-59	781'	WEST
E 20-9	904'	NORTH	I-20-60	957'	WEST
E 20-11	1167'	NORTH	I-20-62	1069'	WEST
N 1/16 COR.	1309'	NORTH	I-20-63	1168'	WEST
I-20-1	227'	WEST	S 1/6 COR.	1364'	WEST
I-20-2	340'	WEST	W 20-1	144'	SOUTH
I-20-3	477'	WEST	W 20-2	289'	SOUTH
I-20-4	669'	WEST	W 20-3	445'	SOUTH
I-20-6	908'	WEST	W 20-4	737'	SOUTH
I-20-8	1065'	WEST	W 20-5	999'	SOUTH
I-20-10	1209'	WEST	W 20-7	1103'	SOUTH
NE 1/16 COR.	1321'	WEST	W 20-9	1312'	SOUTH
I-20-13	112'	SOUTH	SW COR.	1423'	SOUTH
I-20-14	212'	SOUTH	S 20-2	117'	EAST
I-20-16	362'	SOUTH	S 20-4	281'	EAST
I-20-17	538'	SOUTH	S 20-5	504'	EAST
I-20-18	667'	SOUTH	S 20-6	631'	EAST
I-20-19	767'	SOUTH	S 20-8	797'	EAST
I-20-20	921'	SOUTH	S 20-10	1052'	EAST
I-20-21	1081'	SOUTH	S 20-11	1195'	EAST
CE 1/16 COR.	1335'	SOUTH	W 1/16 COR.	1386'	EAST
I-20-23	77'	WEST	S 20-15	1625'	EAST
I-20-24	299'	WEST	S 20-17	1823'	EAST
I-20-26	510'	WEST	S 20-18	1975'	EAST
I-20-27	691'	WEST	S 20-19	2091'	EAST
I-20-28	807'	WEST	S 20-20	2384'	EAST
I-20-29	1055'	WEST	S 20-22	2558'	EAST
I-20-30	1121'	WEST	S 1/4 COR.	2771'	EAST
CTR. 1/4 COR.	1346'	WEST			
I-20-32	196'	WEST	SE COR.		
I-20-34	396'	WEST	E 20-21	262'	NORTH
I-20-35	605'	WEST	E 20-22	446'	NORTH
I-20-36	778'	WEST	E 20-23	643'	NORTH
I-20-38	939'	WEST	E 20-24	826'	NORTH
I-20-39	1082'	WEST	E 20-25	915'	NORTH
I-20-40	1190'	WEST	E 20-26	1057'	NORTH
CW 1/16 COR.	1344'	WEST	E 20-28	1218'	NORTH
I-20-42	56'	SOUTH	S 1/16 COR.	1322'	NORTH
I-20-43	301'	SOUTH	E 20-31	1541'	NORTH
I-20-44	481'	SOUTH	E 20-33	1802'	NORTH
I-20-46	724'	SOUTH	E 20-35	2041'	NORTH
I-20-47	869'	SOUTH	E 20-36	2189'	NORTH
I-20-48	1032'	SOUTH	E 20-37	2355'	NORTH
I-20-50	1216'	SOUTH	E 20-38	2487'	NORTH
SW 1/16 COR.	1398'	SOUTH	E 1/4 COR.	2643'	NORTH

**S.W. SECTION CORNER**  
FD. 1953 G.L.O. BRASS CAP  
40" FIR SNAG, N 28° E, 24.0' (NO MARKS), 1891 B.T.  
54" FIR, S 49° W, 48.8' (NO MARKS), 1891 B.T.  
72" FIR, N 52° W, 25.6' (BARK SCRIBED), 1891 B.T.  
16" HEMLOCK, S 55° E, 11.2' (SCRIBE VIS.), 1953 B.T.  
22" HEM. STUMP, N 5° E, 62.9' (SCRIBE VIS.), 1953 B.T.

**SOUTH 1/4 CORNER**  
FD. 1953 G.L.O. BRASS CAP  
24" DOWNED FIR, N 2° E, 32.0' (SCAR VIS.), 1953 B.T.  
SET, 15" FIR, S 38° E, 32.7' (SCRIBED)  
17" MAPLE, N 39° E, 38.5' (SCRIBED)

**S.E. SECTION CORNER**  
FD. 1953 G.L.O. BRASS CAP  
22" FIR STUMP, S 64° W, 27.0' (NO MARKS), 1891 B.T.  
30" FIR STUMP, N 38° W, 37.7' (NO MARKS), 1891 B.T.  
36" FIR STUMP, S 68° E, 31.1' (NO MARKS), 1891 B.T.  
62" FIR, N 24° E, 41.8' (NO MARKS), 1891 B.T.  
15" FIR, S 27° E, 32.4' (SCAR VIS.), 1953 B.T.  
24" FIR, S 33° W, 50.8' (SCAR VIS.), 1953 B.T.  
36" FIR, N 2° W, 54.6' (SCAR VIS.), 1953 B.T.  
62" FIR, N 24° E, 41.8' (SCAR VIS.), 1953 B.T.

**"A" NORTH 1/16 CORNER**  
SET 1 1/2" x 36" IRON PIPE & BRASS CAP  
45" FIR, S 61° E, 17.1' (SCRIBED)  
46" FIR, N 7° W, 26.9' (SCRIBED)

**"D" CENTER 1/4 CORNER**  
SET 1 1/2" x 36" IRON PIPE & BRASS CAP  
20" FIR, N 85° W, 21.2' (SCRIBED)  
26" FIR, S 1° E, 23.8' (SCRIBED)

**"G" SOUTH 1/16 CORNER**  
SET 1 1/2" x 36" IRON PIPE & BRASS CAP  
12" CEDAR, S 51° E, 28.1' (SCRIBED)

**"B" N.E. 1/16 CORNER**  
SET 1 1/2" x 36" IRON PIPE & BRASS CAP  
8" FIR, N 9° E, 52.3' (SCRIBED)  
20" CEDAR, S 34° E, 60.1' (SCRIBED)

**"E" C.W. 1/16 CORNER**  
SET 1 1/2" x 36" IRON PIPE & BRASS CAP  
44" FIR, S 52° W, 17.0' (SCRIBED)  
60" FIR, S 42° E, 26.6' (SCRIBED)

**"H" WEST 1/16 CORNER**  
SET 1 1/2" x 36" IRON PIPE & BRASS CAP  
22" HEMLOCK, N 31° W, 14.1' (SCRIBED)  
24" HEMLOCK, S 63° W, 22.5' (SCRIBED)

**"C" C.E. 1/16 CORNER**  
SET 1 1/2" x 36" IRON PIPE & BRASS CAP  
16" MAPLE, S 7° W, 22.4' (SCRIBED)  
18" ALDER, N 62° E, 19.9' (SCRIBED)

**"F" S.W. 1/16 CORNER**  
SET 1 1/2" x 36" IRON PIPE & BRASS CAP  
22" MAPLE, S 53° W, 25.5' (SCRIBED)  
24" ALDER, S 27° E, 8.5' (BARK SCRIBED)

**"I" SOUTH 1/16 CORNER**  
SET 1 1/2" x 36" IRON PIPE & BRASS CAP  
30" HEMLOCK, N 40° E, 46.6' (SCRIBED)  
43" FIR, S 5° W, 64.9' (SCRIBED)