

COUNTY SURVEYORS FILE DATA  
DO NOT REMOVE FROM OFFICE

SURVEY IN THE SW 1/4 OF THE SW 1/4 OF SECTION 8, T23S, R7W, W.M.  
& GOV'T LOT 10

FOR  
INTERNATIONAL PAPER COMPANY

BY  
DONALD A. BENTZ  
P.O. BOX 901  
ROSEBURG, OREGON

NOVEMBER 1982

SCALE: 1" = 500'

SECTION CORNER  $\frac{31}{6}$   
F.d. "X" in rock in fence line  
F.d. 20" d. fir bears N36°W 96.2' - visible scribes  
F.d. 36" b. oak bears N15°E 234.0' - visible scribes

1/4 CORNER  
F.d. T iron & rock (No record)  
No bearing trees found

1/4 CORNER  
F.d. Brass Cap  
F.d. 54" fir bears N4°E 33.0' - scribe in poor condition  
F.d. 10" myrtle bears N67°E 6.7' - visible scribes  
F.d. 16" d. fir bears S51°W 24.6' - visible scribes

ANGLE POINT  
F.d. Brass Cap  
F.d. 22" d. fir bears S66°W 110.7' - vis. scribes  
(28.59 ch.)

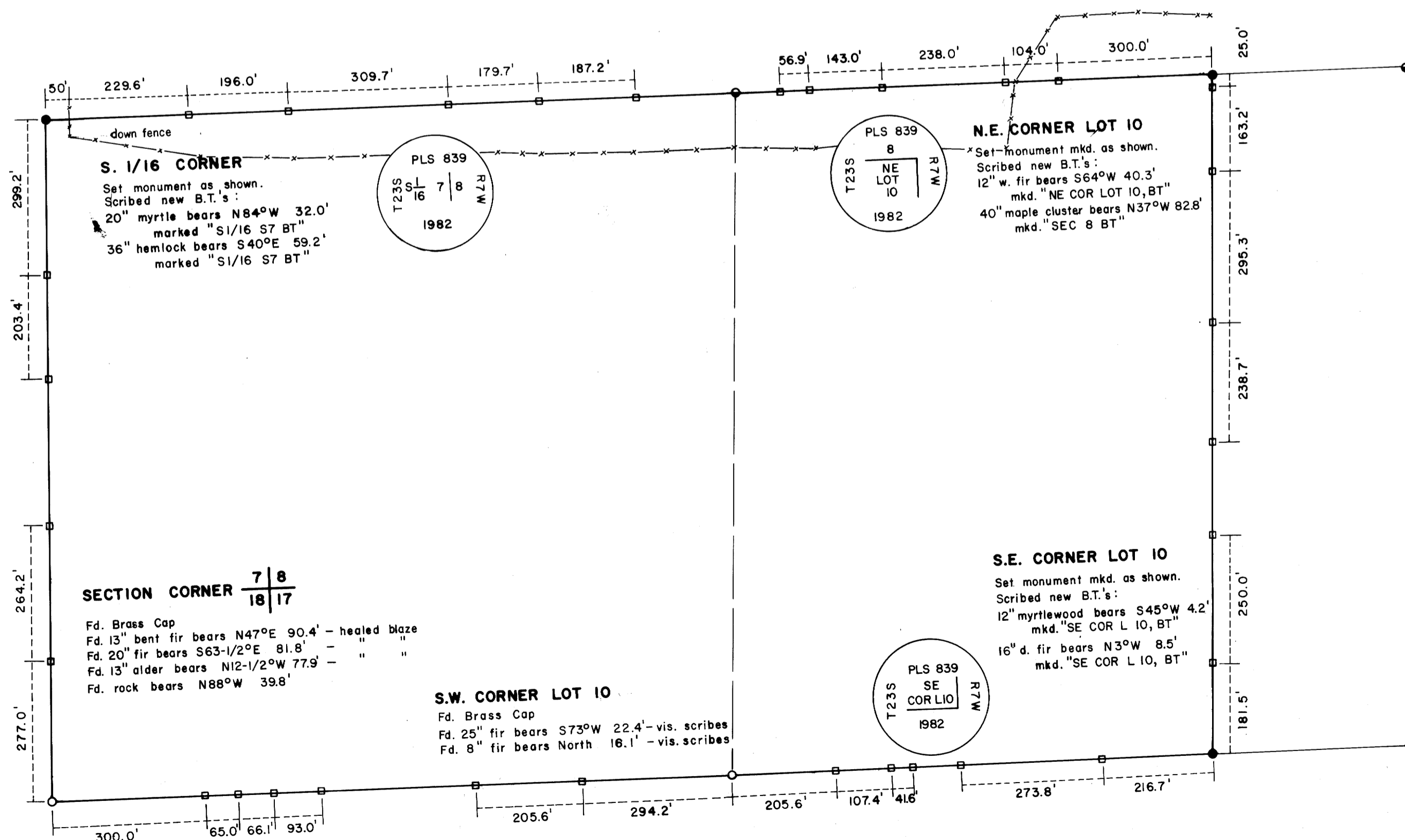
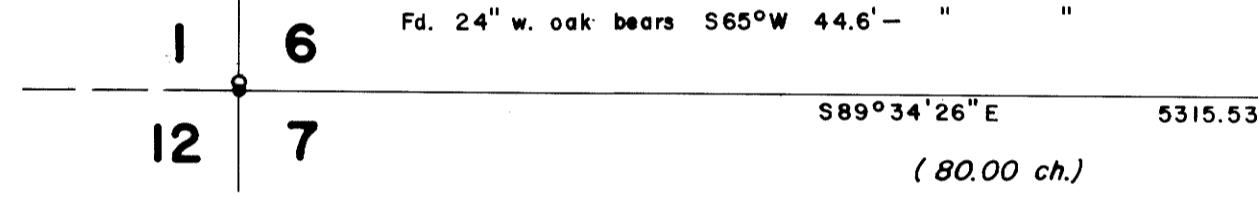
FILED  
RECEIVED  
JAN 10 1983  
COUNTY SURVEYOR  
DOUGLAS COUNTY, ORE.

LEGEND:

- COMPUTED POINT ONLY
  - FOUND MONUMENT AS NOTED, USED FOR CONTROL
  - SET 2-1/2" X 36" IRON PIPE IN CONCRETE WITH ALUM. CAP MARKED AS SHOWN
  - SET 1/2" X 60" IRON ROD WITH BOUNDARY SIGN MARKED "PROPERTY LINE - INTERNATIONAL PAPER CO. - GARDINER, OREGON" (SIGNS FACE I.P. PROPERTY)
  - FENCE LINE
  - LINES FLAGGED WITH RED RIBBON & TREES BLAZED
- BASIS OF BEARING, SOLAR OBSERVATION  
DISTANCE TO BEARING TREES ARE CENTER MEASURE  
ALL BEARING TREES ARE SCRIBED

WITNESS CORNER TO SECTION CORNER  $\frac{1}{12}$   $\frac{6}{7}$

F.d. Brass Cap (Witness Corner - bears North 20.00' of true corner.)  
F.d. 30" w. oak bears N70°E 52.4' - hollow, down, no scribes  
F.d. 25" w. oak bears N53°W 29.0' - visible scribes  
F.d. 20" w. oak bears N64°W 22.0' - " "  
F.d. 22" w. oak bears N33°E 21.3' - " "  
F.d. 34" b. oak bears S7°E 40.5' - " "  
F.d. 24" w. oak bears S65°W 44.6' - " "



DETAIL A  
SCALE: 1" = 200'

NARRATIVE:

Survey made to determine and post property lines of International Paper Co. in the Southwest Corner of Section 8, T.23S., R.7W., W.M., Douglas County, Oregon.

Field work by G. Long, M. Radcliffe, D. Bentz; computations by M. Riggan and D. Bentz; drafting by D. Hopkins and M. Riggan.

Corners searched for and not found include: (1) East 1/4 Corner of Section 8; (2) Section Corner common to Sections 4, 5, 8 & 9; (3) North 1/4 Corner of Section 8; (4) Section Corner common to Sections 5, 6, 7 & 8; (5) North 1/4 Corner of Section 7; (6) East 1/4 Corner of Section 6; (7) North Section Corner common to Sections 5 & 6; and (8) West 1/4 Corner of Section 8.

The South and West Line of parcel surveyed is determined by Section Lines. The North Line is determined by 1/16 line. The East Line is my best attempt to duplicate the West Line of D.L.C. No. 47. This was done using record calls and bearings since no corners exist on the original D.L.C.

Property lines were blazed and posted to standards of International Paper Co. so that signs on posting can be read while standing on the property in question.

As mentioned above, the East Line of parcel surveyed was determined using record distance from the 1/4 Corner, then on true North to intersect with the North Line of the S1/2 of the SW 1/4. This has been discussed with adjacent property owners and meets with their approval. Quitclaims should be exchanged to finalize this line.

REGISTERED  
PROFESSIONAL  
LAND SURVEYOR  
DONALD A. BENTZ  
839

COUNTY SURVEYORS FILE DATA  
DO NOT REMOVE FROM OFFICE