

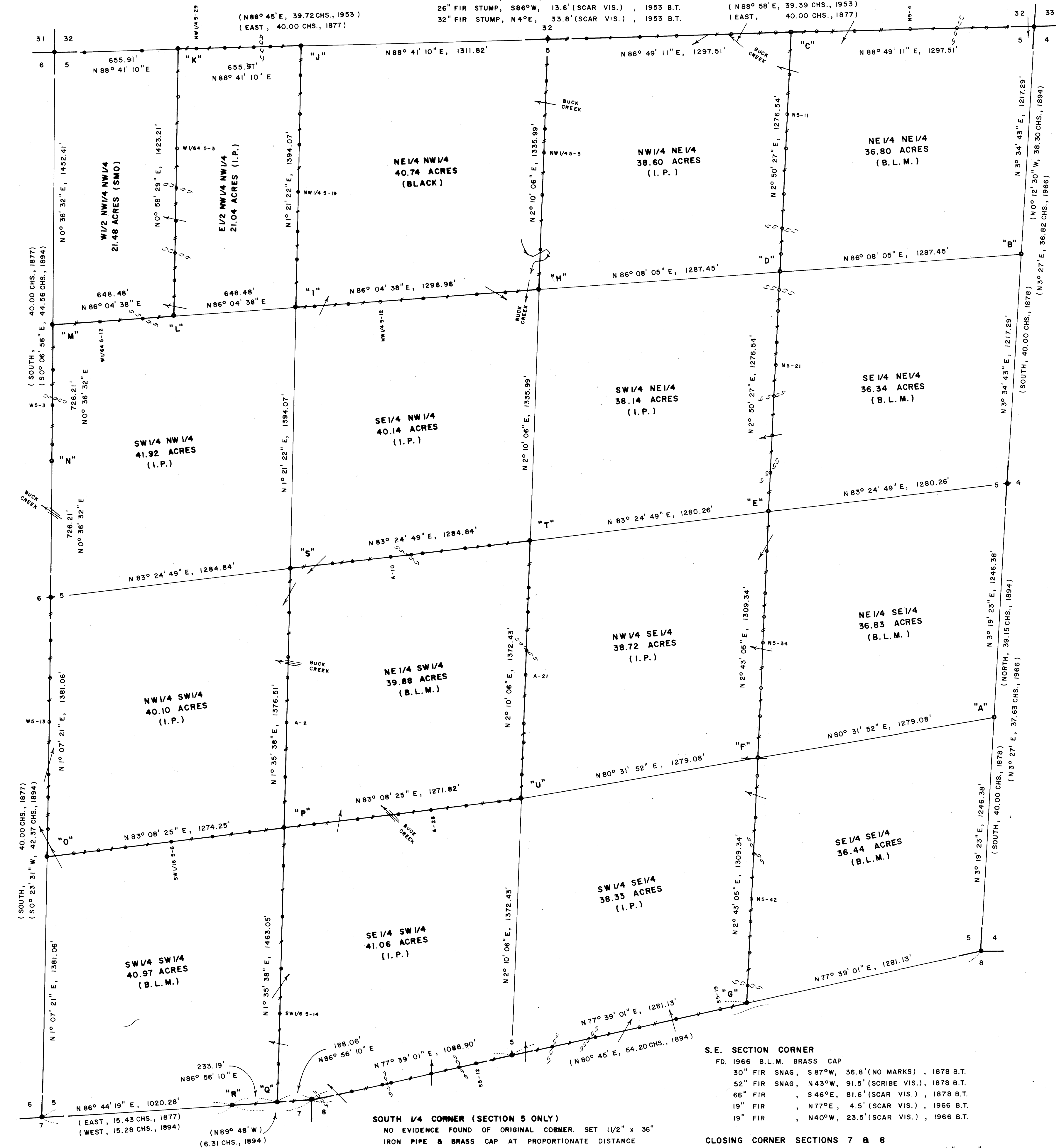
**N.W. SECTION CORNER**  
 FD. 1953 G.L.O. BRASS CAP  
 60" FIR STUMP, S 27° W, 54.5' (NO MARKS), 1877 B.T.  
 11" MAPLE, N 48° W, 22.4' (SCAR VIS.), 1969 CO. SURV.  
 14" MAPLE, N 6° E, 21.9' (SCAR VIS.), 1969 CO. SURV.  
 15" MAPLE, S 49° W, 20.6' (SCAR VIS.), 1969 CO. SURV.

**WEST 1/4 CORNER**  
 FD. 1982 I.P. BRASS CAP (STAMPED P.L.S. 497)  
 24" MAPLE, N 56° W, 59.7' (SCRIBE VIS.), 1982 B.T.  
 90" MAPLE, N 53° E, 36.0' (SCRIBE VIS.), 1982 B.T.

**N.E. SECTION CORNER**  
 FD. 1953 G.L.O. BRASS CAP  
 36" FIR STUB, N 29° E, 22.0' (SCRIBE VIS.), 1877 B.T.  
 63" FIR SNAG, S 33° W, 121.2' (NO MARKS), 1877 B.T.  
 68" FIR, S 33° E, 76.6' (SCAR VIS.), 1877 B.T.  
 16" FIR, N 42° E, 62.2' (SCAR VIS.), 1953 B.T.  
 38" HEMLOCK, N 29° W, 79.7' (SCRIBE VIS.), 1953 B.T.

**"A" SOUTH 1/16 CORNER**  
 SET 1/2" x 36" IRON PIPE & BRASS CAP  
 18" HEMLOCK, N 39° W, 63.5' (SCRIBED)  
 75" FIR, N 89° E, 28.5' (SCRIBED)

**"L" CW-NW 1/64 CORNER**  
 SET 1/2" x 36" IRON PIPE & BRASS CAP  
 20" FIR, S 70° E, 12.9' (SCRIBED)  
 24" FIR, S 85° W, 11.6' (SCRIBED)



**S.W. SECTION CORNER**  
 FD. 1966 B.L.M. BRASS CAP  
 34" FIR SNAG, S 47° W, 62.0' (NO MARKS), 1877 B.T.  
 46" FIR STUB, S 50° E, 38.0' (NO MARKS), 1877 B.T.  
 60" FIR SNAG, N 35° E, 68.0' (NO MARKS), 1877 B.T.  
 18" FIR, N 68° W, 5.1' (SCAR VIS.), 1966 B.T.  
 21" HEMLOCK, N 26° E, 17.6' (SCAR VIS.), 1966 B.T.

**SOUTH 1/4 CORNER (SECTION 5 ONLY)**  
 NO EVIDENCE FOUND OF ORIGINAL CORNER. SET 1/2" x 36" IRON PIPE & BRASS CAP AT PROPORTIONATE DISTANCE  
 23" CEDAR, N 3° W, 47.8' (SCRIBED)  
 58" FIR, N 72° W, 50.1' (SCRIBED)

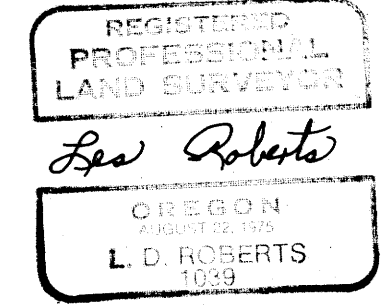
**S.E. SECTION CORNER**  
 FD. 1966 B.L.M. BRASS CAP  
 30" FIR SNAG, S 87° W, 36.8' (NO MARKS), 1878 B.T.  
 52" FIR SNAG, N 43° W, 91.5' (SCRIBE VIS.), 1878 B.T.  
 66" FIR, S 46° E, 81.6' (SCAR VIS.), 1878 B.T.  
 19" FIR, N 77° E, 4.5' (SCAR VIS.), 1966 B.T.  
 19" FIR, N 40° W, 23.5' (SCAR VIS.), 1966 B.T.

**EAST 1/4 CORNER**  
 FD. 1966 B.L.M. BRASS CAP  
 22" MAPLE, S 50° E, 46.7' (SCAR VIS.), 1966 B.T.  
 36" FIR, S 57° W, 40.0' (SCAR VIS.), 1966 B.T.

**CLOSING CORNER SECTIONS 7 & 8**  
 NO EVIDENCE FOUND OF ORIGINAL CORNER. SET 1/2" x 36" IRON PIPE & BRASS CAP BY THE METHOD OF BROKEN BOUNDARIES.  
 34" FIR, S 32° W, 99.0' (SCRIBED)  
 64" FIR, S 66° E, 44.5' (SCRIBED)  
 67" FIR, WEST, 41.9' (SCRIBED)

**NARRATIVE**  
 I, LES ROBERTS, REGISTERED PROFESSIONAL LAND SURVEYOR DO CERTIFY THAT I HAVE CORRECTLY SURVEYED SECTION 5 IN ACCORDANCE TO THE MANUAL OF INSTRUCTIONS FOR THE SURVEY OF THE PUBLIC LANDS OF THE UNITED STATES AND IN ACCORDANCE TO INSTRUCTIONS CONTAINED IN A LETTER, DATED JUNE 30, 1982, FROM THE PORTLAND OFFICE OF THE BUREAU OF LAND MANAGEMENT, SAID LETTER BEING ON RECORD IN FILE NO. C.S. 58/280 DOUGLAS COUNTY SURVEYORS OFFICE. THE CLOSING CORNER TO SECTIONS 7 AND 8 AND THE ANGLE POINT TO SECTIONS 5 AND 7 (CORNER "R") WERE SET BY THE METHOD OF BROKEN BOUNDARIES USING ALANZO GESNER'S 1894 SURVEY DATA. THE SOUTH 1/4 CORNER OF SEC. 5 WAS SET HALFWAY, DEPARTURE DISTANCE, BETWEEN THE FOUND S.W. & S.E. SECTION CORNERS & ON LINE BETWEEN THE CLOSING CORNER TO SECTIONS 7 & 8 AND THE S.E. CORNER OF SECTION 5. THE CENTER 1/4 COR. WAS SET AT THE INTERSECTION OF THE N-S AND E-W CENTERLINES OF SECTION 5. THE SOUTH 1/16 & THE NORTH 1/16 CORNERS BETWEEN SECTIONS 4 & 5 WERE SET HALFWAY BETWEEN THE EAST 1/4 COR. AND THE S.E. CORNER AND THE N.E. CORNER OF SEC. 5 RESPECTIVELY. THE EAST 1/16 & THE WEST 1/16 CORNERS BETWEEN SECTIONS 5 & 32 WERE SET HALFWAY BETWEEN THE WEST 1/4 COR. AND THE N.E. CORNER AND THE N.W. CORNER OF SEC. 5 RESPECTIVELY. THE W-W 1/64 COR. WAS SET HALFWAY BETWEEN THE N.W. CORNER OF SECTION 5 & THE WEST 1/16 COR. BETWEEN SECTIONS 5 & 32. THE NORTH 1/6 & THE SOUTH 1/16 CORNERS ON THE WEST LINE OF SEC. 5 WERE SET HALFWAY BETWEEN THE WEST 1/4 COR. AND THE N.W. CORNER AND THE S.W. COR. OF SECTION 5 RESPECTIVELY. THE S-N 1/64 COR. WAS SET HALFWAY BETWEEN THE WEST 1/4 COR. OF SEC. 5 AND THE NORTH 1/16 COR. BETWEEN SECTIONS 5 & 6. THE WEST 1/16 CORNER ON THE SOUTH LINE OF SEC. 5 WAS SET HALFWAY, DEPARTURE DISTANCE, BETWEEN THE SOUTH 1/4 COR. & THE S.W. COR. OF SEC. 5 AND ON LINE BETWEEN THE CLOSING CORNER TO SECTIONS 7 & 8 AND THE ANGLE POINT TO SECTIONS 5 & 7 (CORNER "R"). THE EAST 1/16 COR. ON THE SOUTH LINE OF SEC. 5 WAS SET HALFWAY BETWEEN THE SOUTH 1/4 COR. & THE S.E. CORNER OF SEC. 5. THE C.E. 1/16 & THE S.E. 1/16 CORNERS WERE SET HALFWAY BETWEEN THE CENTER 1/4 COR. AND THE SOUTH 1/4 COR. OF SEC. 5 RESPECTIVELY. THE C.W. 1/16 & THE C.N. 1/16 CORNERS WERE SET HALFWAY BETWEEN THE CENTER 1/4 COR. AND THE WEST 1/4 COR. & THE NORTH 1/4 COR. OF SEC. 5 RESPECTIVELY. THE N.E. 1/16 COR. AND THE S.E. 1/16 COR. OF SEC. 5 WERE SET AT THE INTERSECTION OF THE N-S AND E-W CENTERLINES OF THE NE 1/4 AND THE SE 1/4 OF SEC. 5 RESPECTIVELY. THE S.W. 1/16 COR. AND THE N.W. 1/16 COR. OF SEC. 5 WERE SET AT THE INTERSECTION OF THE N-S AND E-W CENTERLINES OF THE SW 1/4 AND THE NW 1/4 OF SEC. 5 RESPECTIVELY. THE CW-NW 1/64 CORNER "L", WAS SET HALFWAY BETWEEN THE N.W. 1/16 COR. AND THE NORTH 1/16 COR. ON THE WEST LINE OF SEC. 5. A CLOSED MEANDER TRANSIT AND E.D.M. TRAVERSE WAS RUN BETWEEN ALL FOUND CORNERS AND USED FOR CONTROL. A CLOSED MEANDER TRANSIT AND CHAIN TRAVERSE WAS RUN ALONG ALL BLAZED AND POSTED PROPERTY LINES AS SHOWN. OFFSETS WERE COMPUTED FROM THIS MEANDER TRAVERSE TO THE TRUE PROPERTY LINE.

**LEGEND**  
 • CORNERS FOUND AND USED FOR CONTROL  
 • CORNERS SET, 1/2" x 36" IRON PIPES WITH BRASS CAPS. CAPS STAMPED S-T-R, DATE AND P.L.S. NO. 1039.  
 — LINES MARKED WITH RED PAINTED BLAZES, 1/2" x 60" IRON RODS AND RED RIBBON. A YELLOW PROPERTY LINE SIGN, WITH P.L.S. NO. 1039 STAMPED UPON, IS ATTACHED TO EACH ROD.  
 ( ) DATA OF RECORD, 1877, 1878, 1894 AND 1953 G.L.O. SURVEYS  
 BASIS OF BEARING, SOLAR OBSERVATION  
 DISTANCE TO BEARING TREES ARE CENTER MEASURE  
 ALL NEW BEARING TREES ARE SCRIBED  
 SCALE 1" = 300'



FILED RECEIVED  
 JAN 5 1983  
 COUNTY SURVEYOR  
 DOUGLAS COUNTY, ORE.

SURVEY OF  
 SECTION 5, T21S, R9W, W.M.  
 DOUGLAS COUNTY, OREGON  
 FOR  
 INTERNATIONAL PAPER COMPANY  
 BY  
 ROBERTS SURVEYING INC.  
 29 WEST 29TH STREET  
 EUGENE, OREGON 97405  
 DECEMBER 21, 1982

LOCATION OF 1/2" IRON RODS

N.E. COR.	WEST	CW-NW 1/64	WEST
N5-1	255'	W/64 5-11	168'
N5-2	411'	W/64 5-12	394'
N5-4	661'	N 1/16 COR.	648'
N5-6	957'	W 5-1	241'
N5-7	1157'	W 5-3	430'
E 1/16 COR.	1298'	W 5-5	642'
N5-9	224'	S-N 1/64 COR.	726'
N5-11	438'		
N5-12	621'		
N5-13	868'	W 1/4 COR.	
N5-14	1045'	W 5-10	229'
N5-16	1179'	W 5-11	428'
N.E. 1/16 COR.	1276'	W 5-13	667'
N5-18	1378'	W 5-14	944'
N5-19	1491'	W 5-15	1064'
N5-20	1659'	W 5-16	1236'
N5-21	1776'	S 1/16 COR.	1381'
N5-22	1941'	SW 1/16 5-1	146'
N5-24	2149'	SW 1/16 5-3	281'
N5-26	2352'	SW 1/16 5-4	423'
C.E. 1/16 COR.	2553'	SW 1/16 5-6	671'
N5-29	212'	SW 1/16 5-7	890'
N5-31	436'	SW 1/16 5-8	1089'
N5-33	560'	SW 1/16 COR.	1274'
N5-34	697'	SW 1/16 5-10	204'
N5-36	941'	SW 1/16 5-12	474'
N5-37	1089'	SW 1/16 5-13	752'
S.E. 1/16 COR.	1309'	SW 1/16 5-14	992'
N5-39	1408'	SW 1/16 5-15	1261'
N5-40	1630'	W 1/16 COR.	1463'
N5-41	1822'		
N5-42	2064'		
N5-43	2186'	ANGLE PT.	
N5-44	2351'	W 1/16 COR.	233'
N5-45	2528'	CLOS. COR.	421'
E 1/16 COR.	2619'	S 5-7	218'
		S 5-8	380'
		S 5-9	427'
		S 5-10	647'
		S 5-11	800'
		S 5-12	894'
		S 1/4 COR.	1089'
		S 5-15	1308'
		S 5-16	1547'
		S 5-17	1787'
		S 5-18	1983'
		S 5-19	2225'
		E 1/16 COR.	2370'
		S.W. 1/16 COR.	
		A-1	266'
		A-2	553'
		A-3	796'
		A-4	906'
		A-5	1140'
		C.W. 1/16 COR.	1376'
		A-8	221'
		A-9	332'
		A-10	538'
		A-12	643'
		A-13	702'
		A-14	935'
		A-15	1067'
		C. 1/4 COR.	1285'
		A-17	249'
		A-18	379'
		A-20	587'
		A-21	713'
		A-22	972'
		A-23	1079'
		A-24	1247'
		C.S. 1/16 COR.	1372'
		A-26	117'
		A-27	293'
		A-28	483'
		A-29	654'
		A-30	877'
		A-31	1109'
		S.W. 1/16 COR.	1272'
		W-W 1/64 COR.	
		W/64 5-2	261'
		W/64 5-3	533'
		W/64 5-5	745'
		W/64 5-6	922'
		W/64 5-8	1089'
		W/64 5-9	1235'
		CW-NW 1/64	1423'

COUNTY SURVEYORS FILE DATA  
 DO NOT REMOVE FROM OFFICE