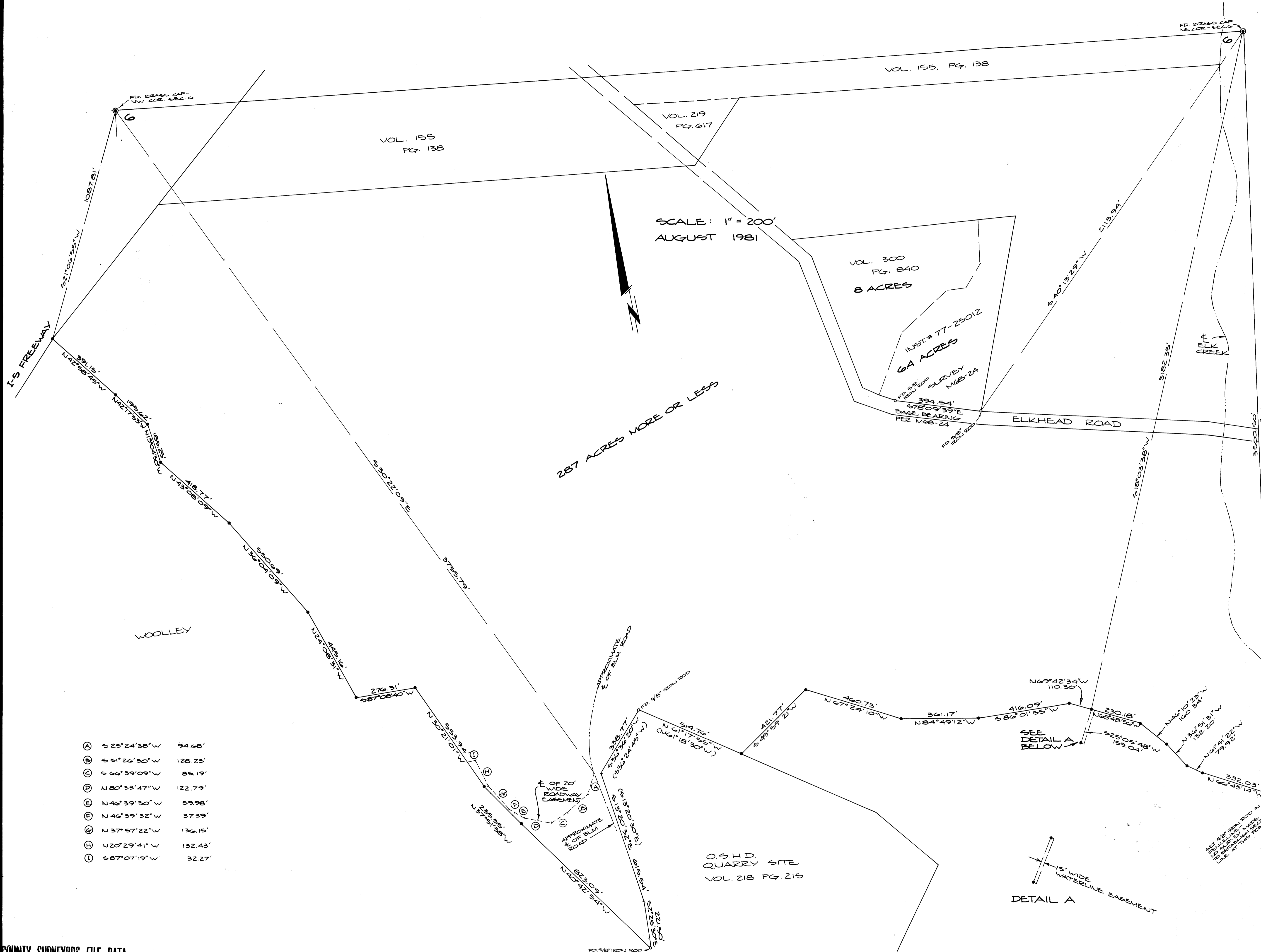


COUNTY SURVEYORS FILE DATA
DO NOT REMOVE FROM OFFICE

FILED ✓
RECEIVED ✓
SEP 29 1981
COUNTY SURVEYOR
DOUGLAS COUNTY, ORE.
✓



SURVEY IN
SW 1/4, NW 1/4, NE 1/4, SE 1/4 OF
SECTION 6, T23S, R4W, W.M.
IN NE 1/4 OF SECTION 1,
T23S, R5W, W.M.

FOR: ADAMS CREEK RANCH
& WOOLEY ENTERPRISES
BY: BHW ENGINEERING &
SURVEYING, INC.
1205 SE COURT - ROSEBURG, OR.

LEGEND:

- FOUND BRASS CAP
- FOUND MONUMENT AS NOTED
- SET 5/8" x 30" IRON ROD

NARRATIVE:

RON QUIMBY & DAVE DELATTE, USING A WILD
T1 THEODOLITE & RED-1 EDM ON AUGUST
24 & 25, ESTABLISHED A RANDOM LINE
WITH HELP OF HAROLD BOLCOCK, OWNER,
IN EFFORT TO PROVIDE LEGAL DESCRIPTION.
MONUMENTS WERE SET & TIED. ACRES
WAS COMPUTED BY SCALING SINCE NO
PROPERTY TO THE NORTH WAS TIED TO
OUR SURVEY.

COMPUTATIONS BY D. BENTZ,
DRAFTING BY D. HOPKINS.

A	S 25° 24' 38" W	94.68'
B	S 51° 26' 50" W	128.23'
C	S 66° 39' 09" W	85.19'
D	N 80° 33' 47" W	122.79'
E	N 46° 39' 30" W	59.98'
F	N 46° 39' 32" W	37.39'
G	N 37° 57' 22" W	136.15'
H	N 20° 29' 41" W	132.43'
I	S 87° 07' 19" W	32.27'

REGISTERED
PROFESSIONAL
LAND SURVEYOR
DONALD A. BENTZ
JULY 12, 1980
839

COUNTY SURVEYORS FILE DATA
DO NOT REMOVE FROM OFFICE