

EAST 1/4 CORNER SECTION 3 ONLY
FD. 1967 DOUGLAS COUNTY BRASS CAP, MARKED SEC. 3 | 2
44" CEDAR, S 2°W, 38.4' (SCAR VIS.), 1894 B.T.
59" FIR, S 64°E, 60.7' (SCRIBE VIS.), 1894 B.T.
13" FIR, S 29°E, 25.1' (SCAR VIS.), 1967 C.S.B.T.

SOUTH 1/4 CORNER SECTION 35
NO EVIDENCE FOUND OF ORIGINAL CORNER.
NO PERMANENT MONUMENT SET.

SECTION CORNER SECTIONS 35 AND 36
FD. 1964 B.L.M. BRASS CAP
36" OAK, N 64 1/2°W, 71.8' (SCAR VIS.), 1964 B.T.
42" OAK, N 18°E, 59.3' (SCAR VIS.), 1964 B.T.

SOUTH 1/4 CORNER SECTION 36
NO EVIDENCE FOUND OF ORIGINAL CORNER.
NO PERMANENT MONUMENT SET.

CLOSING CORNER SECTIONS 36 AND 31
FD. 1964 B.L.M. BRASS CAP
19" FIR, N 75°W, 101.0' (SCAR VIS.), 1964 B.T.
28" FIR STUMP, N 50°E, 112.4' (SCAR VIS.), 1964 B.T.

STANDARD CORNER SECTIONS 2 AND 3
FD. 1964 B.L.M. BRASS CAP
20" MAPLE, S 8°W, 33.7' (SCAR VIS.), 1894 B.T.
40" FIR, S 24°E, 38.8' (SCAR VIS.), 1894 B.T.
55" FIR, N 80°W, 43.0' (SCAR VIS.), 1894 B.T.

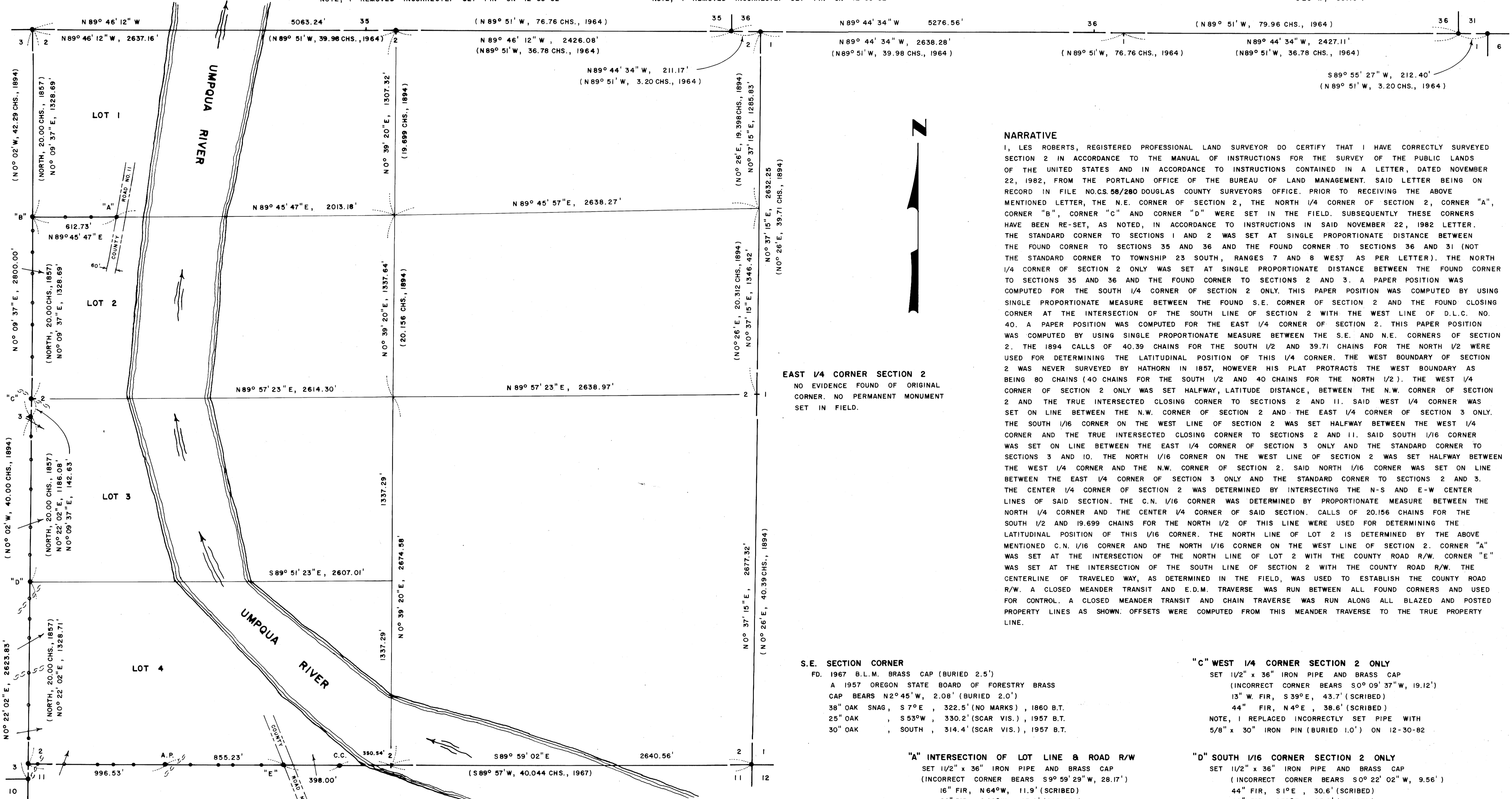
NORTH 1/4 CORNER SECTION 2
NO EVIDENCE FOUND OF ORIGINAL CORNER. SET 5/8" x 30"
IRON ROD AT PROPORTIONATE DISTANCE. BURIED 1.0'
(INCORRECT CORNER BEARS S 89° 46' 12"E, 0.89')
15" OAK, S 77°E, 282.2' (SCRIBED)
18" OAK, S 77°E, 270.8' (SCRIBED)
NOTE, I REMOVED INCORRECTLY SET PIN ON 12-30-82

STANDARD CORNER SECTIONS 1 AND 2
NO EVIDENCE FOUND OF ORIGINAL CORNER. SET 5/8" x 24"
IRON ROD AT PROPORTIONATE DISTANCE. BURIED 0.5'
(INCORRECT CORNER BEARS S 89° 44' 34"E, 1.69')
24" OAK, S 25°W, 58.4' (SCRIBED)
32" OAK, S 62°E, 165.2' (SCRIBED)
NOTE, I REMOVED INCORRECTLY SET PIN ON 12-30-82

NORTH 1/4 CORNER SECTION 1
NO EVIDENCE FOUND OF ORIGINAL CORNER.
NO PERMANENT MONUMENT SET.

STANDARD CORNER SECTION 1 AND 6
FD. 1964 B.L.M. BRASS CAP
32" FIR STUMP, S 49°W, 4.1' (NO MARKS), 1855 B.T.
36" FIR STUMP, S 66°E, 9.5' (SCRIBE VIS.), 1855 B.T.
27" FIR, S 37°E, 71.6' (SCAR VIS.), 1964 B.T.
1964 BRASS CAP REFERENCE MONUMENT BEARS
S 23°W, 85.16'

SURVEY OF
SECTION 2, T23S, R8W, W.M.
DOUGLAS COUNTY, OREGON
FOR
INTERNATIONAL PAPER COMPANY
BY
ROBERTS SURVEYING INC.
29 WEST 29TH STREET
EUGENE, OREGON 97405
OCTOBER 21, 1982



NARRATIVE
I, LES ROBERTS, REGISTERED PROFESSIONAL LAND SURVEYOR DO CERTIFY THAT I HAVE CORRECTLY SURVEYED SECTION 2 IN ACCORDANCE TO THE MANUAL OF INSTRUCTIONS FOR THE SURVEY OF THE PUBLIC LANDS OF THE UNITED STATES AND IN ACCORDANCE TO INSTRUCTIONS CONTAINED IN A LETTER, DATED NOVEMBER 22, 1982, FROM THE PORTLAND OFFICE OF THE BUREAU OF LAND MANAGEMENT. SAID LETTER BEING ON RECORD IN FILE NO. CS. 58/280 DOUGLAS COUNTY SURVEYORS OFFICE. PRIOR TO RECEIVING THE ABOVE MENTIONED LETTER, THE N.E. CORNER OF SECTION 2, THE NORTH 1/4 CORNER OF SECTION 2, CORNER "A", CORNER "B", CORNER "C" AND CORNER "D" WERE SET IN THE FIELD. SUBSEQUENTLY THESE CORNERS HAVE BEEN RE-SET, AS NOTED, IN ACCORDANCE TO INSTRUCTIONS IN SAID NOVEMBER 22, 1982 LETTER. THE STANDARD CORNER TO SECTIONS 1 AND 2 WAS SET AT SINGLE PROPORTIONATE DISTANCE BETWEEN THE FOUND CORNER TO SECTIONS 35 AND 36 AND THE FOUND CORNER TO SECTIONS 36 AND 31 (NOT THE FOUND CORNER TO TOWNSHIP 23 SOUTH, RANGES 7 AND 8 WEST AS PER LETTER). THE NORTH 1/4 CORNER OF SECTION 2 ONLY WAS SET AT SINGLE PROPORTIONATE DISTANCE BETWEEN THE FOUND CORNER TO SECTIONS 35 AND 36 AND THE FOUND CORNER TO SECTIONS 36 AND 31. A PAPER POSITION WAS COMPUTED FOR THE SOUTH 1/4 CORNER OF SECTION 2 ONLY. THIS PAPER POSITION WAS COMPUTED BY USING SINGLE PROPORTIONATE MEASURE BETWEEN THE FOUND S.E. CORNER OF SECTION 2 AND THE FOUND CLOSING CORNER AT THE INTERSECTION OF THE SOUTH LINE OF SECTION 2 WITH THE WEST LINE OF D.L.C. NO. 40. A PAPER POSITION WAS COMPUTED FOR THE EAST 1/4 CORNER OF SECTION 2. THIS PAPER POSITION WAS COMPUTED BY USING SINGLE PROPORTIONATE MEASURE BETWEEN THE S.E. AND N.E. CORNERS OF SECTION 2. THE 1894 CALLS OF 40.39 CHAINS FOR THE SOUTH 1/2 AND 39.71 CHAINS FOR THE NORTH 1/2 WERE USED FOR DETERMINING THE LATITUDINAL POSITION OF THIS 1/4 CORNER. THE WEST BOUNDARY OF SECTION 2 WAS NEVER SURVEYED BY HATHORN IN 1857, HOWEVER HIS PLAT PROTRACTS THE WEST BOUNDARY AS BEING 80 CHAINS (40 CHAINS FOR THE SOUTH 1/2 AND 40 CHAINS FOR THE NORTH 1/2). THE WEST 1/4 CORNER OF SECTION 2 ONLY WAS SET HALFWAY, LATITUDE DISTANCE, BETWEEN THE N.W. CORNER OF SECTION 2 AND THE TRUE INTERSECTED CLOSING CORNER TO SECTIONS 2 AND 11. SAID WEST 1/4 CORNER WAS SET ON LINE BETWEEN THE N.W. CORNER OF SECTION 2 AND THE EAST 1/4 CORNER OF SECTION 3 ONLY. THE SOUTH 1/16 CORNER ON THE WEST LINE OF SECTION 2 WAS SET HALFWAY BETWEEN THE WEST 1/4 CORNER AND THE N.W. CORNER OF SECTION 2. SAID NORTH 1/16 CORNER WAS SET ON LINE BETWEEN THE EAST 1/4 CORNER OF SECTION 3 ONLY AND THE STANDARD CORNER TO SECTIONS 2 AND 3. THE CENTER 1/4 CORNER OF SECTION 2 WAS DETERMINED BY INTERSECTING THE N-S AND E-W CENTER LINES OF SAID SECTION. THE C.N. 1/16 CORNER WAS DETERMINED BY PROPORTIONATE MEASURE BETWEEN THE NORTH 1/4 CORNER AND THE CENTER 1/4 CORNER OF SAID SECTION. CALLS OF 20.156 CHAINS FOR THE SOUTH 1/2 AND 19.699 CHAINS FOR THE NORTH 1/2 OF THIS LINE WERE USED FOR DETERMINING THE LATITUDINAL POSITION OF THIS 1/16 CORNER. THE NORTH LINE OF LOT 2 IS DETERMINED BY THE ABOVE MENTIONED C.N. 1/16 CORNER AND THE NORTH 1/16 CORNER ON THE WEST LINE OF SECTION 2. CORNER "A" WAS SET AT THE INTERSECTION OF THE NORTH LINE OF LOT 2 WITH THE COUNTY ROAD R/W. CORNER "E" WAS SET AT THE INTERSECTION OF THE SOUTH LINE OF SECTION 2 WITH THE COUNTY ROAD R/W. THE CENTERLINE OF TRAVELED WAY, AS DETERMINED IN THE FIELD, WAS USED TO ESTABLISH THE COUNTY ROAD R/W. A CLOSED MEANDER TRANSIT AND E.D.M. TRAVERSE WAS RUN BETWEEN ALL FOUND CORNERS AND USED FOR CONTROL. A CLOSED MEANDER TRANSIT AND CHAIN TRAVERSE WAS RUN ALONG ALL BLAZED AND POSTED PROPERTY LINES AS SHOWN. OFFSETS WERE COMPUTED FROM THIS MEANDER TRAVERSE TO THE TRUE PROPERTY LINE.

LEGEND
• CORNERS FOUND AND USED FOR CONTROL
• CORNERS SET, 1/2" x 36" IRON PIPES AND 5/8" IRON RODS. IRON PIPES HAVE BRASS CAPS STAMPED S-T-R, DATE AND P.L.S. NO. 1039. IRON RODS HAVE YELLOW PLASTIC CAPS MARKED "ROBERTS" L.S. 1039.
— LINES MARKED WITH RED PAINTED BLAZES, 1/2" x 60" IRON RODS AND RED RIBBON. A YELLOW PROPERTY LINE SIGN, WITH P.L.S. NO. 1039 STAMPED UPON, IS ATTACHED TO EACH ROD.
() DATA OF RECORD, 1860 AND 1894 G.L.O. SURVEYS. 1964 AND 1967 CADASTRAL SURVEYS.
BASIS OF BEARING, SOLAR OBSERVATION
DISTANCE TO BEARING TREES ARE CENTER MEASURE
ALL NEW BEARING TREES ARE SCRIBED
SCALE 1" = 400'

LOCATION OF 1/2" IRON RODS

S.W. COR.	NORTH	S.W. COR.	EAST
W2-2	182'	S2-1	75'
W2-3	418'	S2-2	260'
W2-4	655'	S2-3	502'
W2-6	910'	S2-4	618'
W2-7	1046'	S2-5	762'
W2-8	1197'	ANGLE PT.	996'
S. 1/16 COR.	1329'	S2-9	179'
W2-11	1512'	S2-11	386'
W2-12	1709'	S2-12	488'
W2-13	1986'	S2-13	696'
W2-14	2203'	R/W PIPE	855'
W2-16	2371'		
E. 1/4 SEC. 3	2515'		
N. 1/4 SEC. 2	2657'	N. 1/16 COR.	235'
W2-21	285'	N. 1/16 2-2	419'
W2-22	516'	N. 1/16 2-3	613'
W2-23	673'	R/W PIPE	613'
W2-25	886'		
W2-26	1039'		
W2-28	1194'		
N. 1/16 COR.	1329'		

EAST 1/4 CORNER SECTION 2
NO EVIDENCE FOUND OF ORIGINAL CORNER. NO PERMANENT MONUMENT SET IN FIELD.

S.E. SECTION CORNER
FD. 1967 B.L.M. BRASS CAP (BURIED 2.5')
A 1957 OREGON STATE BOARD OF FORESTRY BRASS CAP BEARS N 2° 45' W, 2.08' (BURIED 2.0')
38" OAK SNAG, S 7° E, 322.5' (NO MARKS), 1860 B.T.
25" OAK, S 53° W, 330.2' (SCAR VIS.), 1957 B.T.
30" OAK, SOUTH, 314.4' (SCAR VIS.), 1957 B.T.

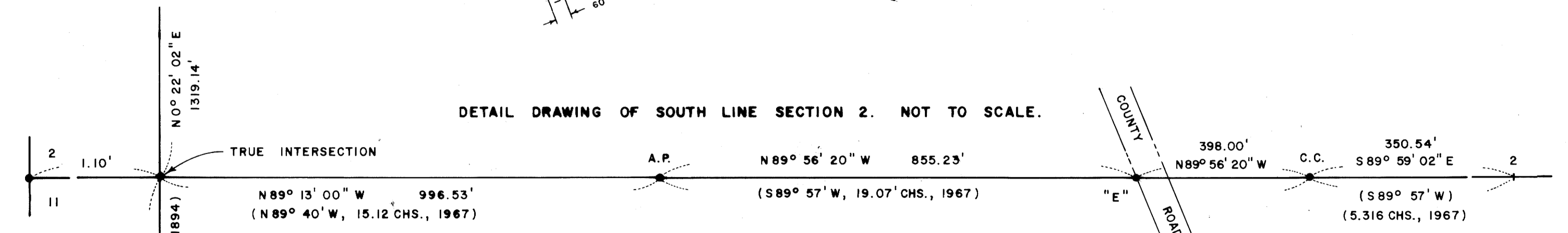
"C" WEST 1/4 CORNER SECTION 2 ONLY
SET 1/2" x 36" IRON PIPE AND BRASS CAP (INCORRECT CORNER BEARS S 0° 09' 37" W, 19.12')
13" W. FIR, S 39° E, 43.7' (SCRIBED)
44" FIR, N 4° E, 38.6' (SCRIBED)
NOTE, I REPLACED INCORRECTLY SET PIPE WITH 5/8" x 30" IRON PIN (BURIED 1.0') ON 12-30-82

"A" INTERSECTION OF LOT LINE & ROAD R/W
SET 1/2" x 36" IRON PIPE AND BRASS CAP (INCORRECT CORNER BEARS S 9° 59' 29" W, 28.17')
16" FIR, N 64° W, 11.9' (SCRIBED)
28" FIR, S 28° W, 43.9' (SCRIBED)
NOTE, I REPLACED INCORRECTLY SET PIPE WITH 5/8" x 30" IRON PIN (BURIED 1.0') ON 12-30-82.

"D" SOUTH 1/16 CORNER SECTION 2 ONLY
SET 1/2" x 36" IRON PIPE AND BRASS CAP (INCORRECT CORNER BEARS S 0° 22' 02" W, 9.56')
44" FIR, S 1° E, 30.6' (SCRIBED)
46" FIR, S 70° E, 25.8' (SCRIBED)
NOTE, I REPLACED INCORRECTLY SET PIPE WITH 5/8" x 25" IRON PIN (BURIED 1.5') ON 12-30-82.

"B" NORTH 1/16 CORNER SECTION 2 ONLY
SET 1/2" x 36" IRON PIPE AND BRASS CAP (INCORRECT CORNER BEARS S 0° 09' 37" W, 28.69')
13" FIR, S 26° E, 32.9' (SCRIBED)
14" FIR, N 20° E, 46.5' (SCRIBED)
NOTE, I REPLACED INCORRECTLY SET PIPE WITH 5/8" x 30" IRON PIN (BURIED 1.5') ON 12-30-82

"E" INTERSECTION OF SECTION LINE & ROAD R/W
SET 1/2" x 36" IRON PIPE AND BRASS CAP
16" FIR, S 77° W, 25.7' (SCRIBED)
31" FIR, N 47° W, 34.9' (SCRIBED)
A 5/8" IRON PIN SET IN SURVEY M11-33 BEARS N 25° 54' 26" W, 10.13'



SECTION CORNER SECTIONS 3 AND 10
FD. 1959 DOUGLAS COUNTY BRASS CAP
33" WHITE FIR, N 31° E, 50.6' (SCAR VIS.), 1894 B.T.
36" FIR, N 65° W, 16.3' (SCAR VIS.), 1894 B.T.
60" FIR, S 55° W, 45.3' (SCAR VIS.), 1894 B.T.
7" FIR, S 74° W, 42.3' (SCAR VIS.), 1959 C.S.B.T.

CLOSING CORNER SECTIONS 2 AND 11
FD. 1959 DOUGLAS COUNTY BRASS CAP
42" FIR, S 3° E, 43.8' (SCAR VIS.), 1894 B.T.
22" FIR, N 25° E, 43.4' (SCAR VIS.), 1959 C.S.B.T.
8" FIR, S 30° E, 15.8' (SCAR VIS.), 1959 C.S.B.T.
SET 1/2" x 36" IRON PIPE AND BRASS CAP AT TRUE INTERSECTION. 1959 DOUGLAS COUNTY BRASS CAP BEARS N 89° 13' 00" W, 1.10'. SEE DETAIL DRAWING. NO NEW B.T.'S SET

ANGLE POINT SECTIONS 2 AND 11
FD. 1967 B.L.M. BRASS CAP
10" FIR, S 67° W, 21.7' (SCAR VIS.), 1967 B.T.
16" FIR, NORTH, 36.8' (SCAR VIS.), 1967 B.T.
A 5/8" IRON PIN SET IN SURVEY M11-33 BEARS N 83° 46' 36" E, 94.25' 2 B.T.'S FOUND.
8" FIR, N 29° E, 19.3' (SCAR VIS.), 1959 C.S.B.T.
26" FIR, S 53° W, 43.0' (SCAR VIS.), 1959 C.S.B.T.

CLOSING CORNER SECTIONS 2, 11 AND D.L.C. NO. 40
FD. 1967 B.L.M. BRASS CAP
39" FIR, S 64° W, 30.6' (SCAR VIS.), 1967 B.T.
48" FIR, N 20° W, 14.2' (SCAR VIS.), 1967 B.T.
A 5/8" IRON PIN SET IN SURVEY M11-33 BEARS N 10° 32' 40" W, 8.63' 2 B.T.'S FOUND.
13" MYRTLE, S 68° E, 17.6' (SCAR VIS.), 1959 C.S.B.T.
17" HEMLOCK STUMP, N 33° E, 13.3' (SCRIBE VIS.), 1959 C.S.B.T.

SOUTH 1/4 CORNER SECTION 2 ONLY
CORNER FALLS IN RIVER AND WAS NOT SET DURING ORIGINAL SURVEY.

