

NORTH 1/4 CORNER
 FD. 1953 G.L.O. BRASS CAP
 12" CEDAR, S66°W, 51.6' (SCRIBE VIS.), NO RECORD
 33" FIR, N43°W, 33.2' (SCAR VIS.), 1953 B.T.

EAST 1/16 CORNER
 FD. 1982 B.L.M. BRASS CAP (NO RECORD)
 18" HEMLOCK, S9°E, 29.8' (SCRIBE VIS.), 1982 B.T.
 27" FIR, N80°W, 26.4' (SCRIBE VIS.), 1982 B.T.

N.E. SECTION CORNER
 FD. 1953 G.L.O. BRASS CAP
 40" FIR SNAG, N28°E, 24.0' (NO MARKS), 1891 B.T.
 54" FIR, S49°W, 48.8' (NO MARKS), 1891 B.T.
 72" FIR, N52°W, 25.6' (SCRIBE VIS.), 1891 B.T.
 16" HEMLOCK, S55°E, 11.2' (SCRIBE VIS.), 1953 B.T.
 22" HEMLOCK STUMP, N5°E, 62.9' (SCRIBE VIS.), 1953 B.T.

COUNTY SURVEYORS FILE DATA
 DO NOT REMOVE FROM OFFICE

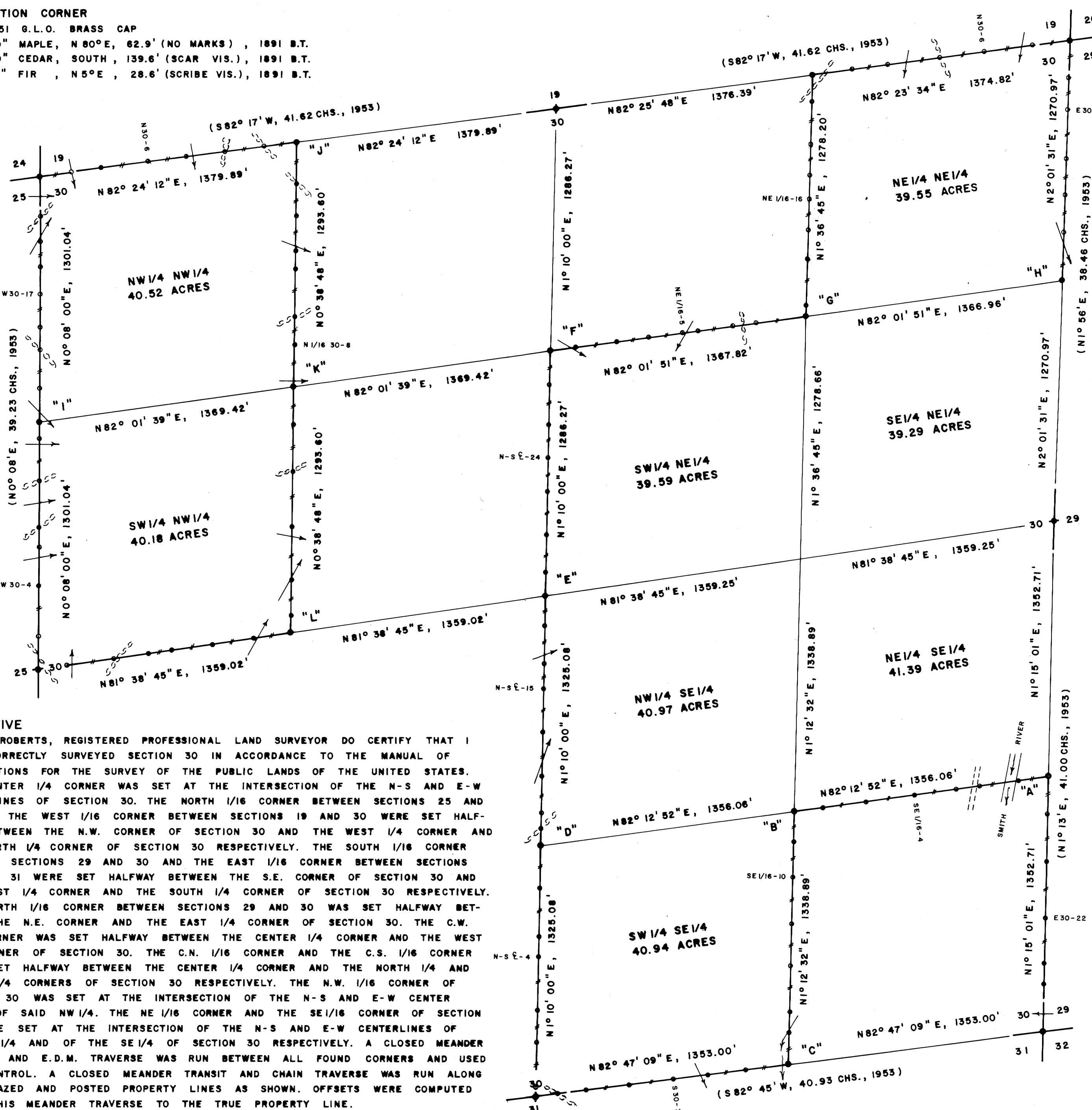
FILED
 RECEIVED
 OCT 21 1982
 COUNTY SURVEYOR
 DOUGLAS COUNTY, OREGON

WEST 1/4 CORNER
 FD. 1951 G.L.O. BRASS CAP
 12" FIR STUMP, S26°W, 9.3' (NO MARKS), 1951 B.T.
 18" FIR, S36°E, 20.9' (SCAR VIS.), 1951 B.T.
 SET 28" FIR, N24°W, 40.8' (SCRIBED)

EAST 1/4 CORNER
 FD. 1953 G.L.O. BRASS CAP
 60" FIR SNAG, N43°W, 60.5' (NO MARKS), 1877 B.T.
 18" MAPLE, S39°E, 22.1' (SCAR VIS.), 1953 B.T.
 22" MAPLE STUB, N83°W, 60.4' (SCRIBE VIS.), 1953 B.T.

N.W. SECTION CORNER
 FD. 1951 G.L.O. BRASS CAP
 39" MAPLE, N80°E, 62.9' (NO MARKS), 1891 B.T.
 39" CEDAR, SOUTH, 139.6' (SCAR VIS.), 1891 B.T.
 61" FIR, N5°E, 28.6' (SCRIBE VIS.), 1891 B.T.

SURVEY OF
 SECTION 30, T20S, R9W, W.M.
 DOUGLAS COUNTY, OREGON
 FOR
 INTERNATIONAL PAPER COMPANY
 BY
 ROBERTS SURVEYING INC.
 29 WEST 29TH STREET
 EUGENE, OREGON 97405
 OCTOBER 8, 1982



LEGEND

- CORNERS FOUND AND USED FOR CONTROL
- CORNERS SET, 1/2" x 36" IRON PIPES WITH BRASS CAPS. CAPS STAMPED S-T-R, DATE AND P.L.S. NO. 1039.
- LINE MARKED WITH RED PAINTED BLAZES, 1/2" x 60" IRON RODS AND RED RIBBON. A YELLOW PROPERTY LINE SIGN, WITH P.L.S. NO. 1039 STAMPED UPON, IS ATTACHED TO EACH ROD.
- () DATA OF RECORD, 1953 G.L.O. SURVEY
- BASIS OF BEARING, WEST LINE SECTION 30 FROM 1953 G.L.O. SURVEY
- DISTANCE TO BEARING TREES ARE CENTER MEASURE
- ALL NEW BEARING TREES ARE SCRIBED.
- SCALE 1" = 400'

REGISTERED PROFESSIONAL LAND SURVEYOR
Les Roberts
 OREGON
 L. D. ROBERTS
 1039

LOCATION OF 1/2" IRON RODS

S.E. COR.		NE 1/16-16		
E30-20	257'	NORTH	NE 1/16-17	744'
E30-21	368'	NORTH	NE 1/16-18	910'
E30-22	603'	NORTH	NE 1/16-19	1137'
E30-23	902'	NORTH	E. 1/16 COR.	1278'
E30-24	1158'	NORTH	N30-2	216'
S. 1/16 COR.	1353'	NORTH	N30-4	402'
SE 1/16-1	154'	WEST	N30-5	686'
SE 1/16-2	366'	WEST	N30-6	920'
SE 1/16-3	489'	WEST	N30-8	1179'
SE 1/16-4	709'	WEST	N.E. COR.	1375'
SE 1/16-5	969'	WEST	E30-2	194'
SE 1/16-6	1201'	WEST	E30-4	363'
S.E. 1/16 COR.	1356'	WEST	E30-6	627'
SE 1/16-9	160'	SOUTH	E30-7	815'
SE 1/16-10	351'	SOUTH	E30-9	1016'
SE 1/16-11	598'	SOUTH	N. 1/16 COR.	1271'
SE 1/16-12	818'	SOUTH		
SE 1/16-13	1063'	SOUTH		
SE 1/16-14	1170'	SOUTH	W. 1/4 COR.	
E. 1/16 COR.	1339'	SOUTH	W30-3	162'
S30-1	224'	WEST	W30-4	434'
S30-2	432'	WEST	W30-5	639'
S30-3	616'	WEST	W30-6	743'
S30-4	849'	WEST	W30-7	988'
S30-5	1082'	WEST	W30-8	1209'
S30-6	1231'	WEST	N. 1/16 COR.	1301'
S. 1/4 COR.	1353'	WEST	W30-12	1478'
N-S E-2	334'	NORTH	W30-14	1683'
N-S E-3	454'	NORTH	W30-15	1806'
N-S E-4	738'	NORTH	W30-17	1977'
N-S E-5	844'	NORTH	W30-18	2122'
N-S E-6	1100'	NORTH	W30-19	2252'
C.S. 1/16 COR.	1325'	NORTH	W30-20	2390'
N-S E-9	1420'	NORTH	N.W. COR.	2602'
N-S E-11	1501'	NORTH	N30-3	170'
N-S E-12	1698'	NORTH	N30-5	328'
N-S E-13	1930'	NORTH	N30-6	585'
N-S E-15	2162'	NORTH	N30-7	789'
N-S E-16	2296'	NORTH	N30-9	991'
N-S E-17	2492'	NORTH	N30-10	1201'
C. 1/4 COR.	2650'	NORTH	W. 1/16 COR.	1380'
N-S E-20	2769'	NORTH	N. 1/16 COR.	1478'
N-S E-21	2967'	NORTH	N. 1/16 COR.	1576'
N-S E-23	3199'	NORTH	N. 1/16 COR.	1674'
N-S E-24	3378'	NORTH	N. 1/16 COR.	1772'
N-S E-25	3550'	NORTH	N. 1/16 COR.	1870'
N-S E-26	3758'	NORTH	N. 1/16 COR.	1968'
C.N. 1/16 COR.	3936'	NORTH	N.W. 1/16 COR.	1294'
NE 1/16-1	135'	EAST	N. 1/16 COR.	1485'
NE 1/16-2	352'	EAST	N. 1/16 COR.	1583'
NE 1/16-4	525'	EAST	N. 1/16 COR.	1681'
NE 1/16-5	704'	EAST	N. 1/16 COR.	1779'
NE 1/16-6	791'	EAST	N. 1/16 COR.	1877'
NE 1/16-7	974'	EAST	C.W. 1/16 COR.	2587'
NE 1/16-9	1100'	EAST	N. 1/16 COR.	201'
N.E. 1/16 COR.	1368'	EAST	N. 1/16 COR.	420'
NE 1/16-12	55'	NORTH	N. 1/16 COR.	640'
NE 1/16-13	304'	NORTH	N. 1/16 COR.	762'
NE 1/16-15	456'	NORTH	N. 1/16 COR.	950'
NE 1/16-16	624'	NORTH	N. 1/16 COR.	1200'
			W. 1/4 COR.	1359'

NARRATIVE
 I, LES ROBERTS, REGISTERED PROFESSIONAL LAND SURVEYOR DO CERTIFY THAT I HAVE CORRECTLY SURVEYED SECTION 30 IN ACCORDANCE TO THE MANUAL OF INSTRUCTIONS FOR THE SURVEY OF THE PUBLIC LANDS OF THE UNITED STATES. THE CENTER 1/4 CORNER WAS SET AT THE INTERSECTION OF THE N-S AND E-W CENTERLINES OF SECTION 30. THE NORTH 1/16 CORNER BETWEEN SECTIONS 25 AND 30 AND THE WEST 1/16 CORNER BETWEEN SECTIONS 19 AND 30 WERE SET HALFWAY BETWEEN THE N.W. CORNER OF SECTION 30 AND THE WEST 1/4 CORNER AND THE NORTH 1/4 CORNER OF SECTION 30 RESPECTIVELY. THE SOUTH 1/16 CORNER BETWEEN SECTIONS 29 AND 30 AND THE EAST 1/16 CORNER BETWEEN SECTIONS 30 AND 31 WERE SET HALFWAY BETWEEN THE S.E. CORNER OF SECTION 30 AND THE EAST 1/4 CORNER AND THE SOUTH 1/4 CORNER OF SECTION 30 RESPECTIVELY. THE NORTH 1/16 CORNER BETWEEN SECTIONS 29 AND 30 WAS SET HALFWAY BETWEEN THE N.E. CORNER AND THE EAST 1/4 CORNER OF SECTION 30. THE C.W. 1/16 CORNER WAS SET HALFWAY BETWEEN THE CENTER 1/4 CORNER AND THE WEST 1/4 CORNER OF SECTION 30. THE C.N. 1/16 CORNER AND THE C.S. 1/16 CORNER WERE SET HALFWAY BETWEEN THE CENTER 1/4 CORNER AND THE NORTH 1/4 AND SOUTH 1/4 CORNERS OF SECTION 30 RESPECTIVELY. THE N.W. 1/16 CORNER OF SECTION 30 WAS SET AT THE INTERSECTION OF THE N-S AND E-W CENTER LINES OF SAID NW 1/4. THE NE 1/16 CORNER AND THE SE 1/16 CORNER OF SECTION 30 WERE SET AT THE INTERSECTION OF THE N-S AND E-W CENTERLINES OF THE NE 1/4 AND OF THE SE 1/4 OF SECTION 30 RESPECTIVELY. A CLOSED MEANDER TRANSIT AND E.D.M. TRAVERSE WAS RUN BETWEEN ALL FOUND CORNERS AND USED FOR CONTROL. A CLOSED MEANDER TRANSIT AND CHAIN TRAVERSE WAS RUN ALONG ALL BLAZED AND POSTED PROPERTY LINES AS SHOWN. OFFSETS WERE COMPUTED FROM THIS MEANDER TRAVERSE TO THE TRUE PROPERTY LINE.

"A" SOUTH 1/16 CORNER
 SET 1/2" x 36" IRON PIPE & BRASS CAP
 1" IRON PIN BEARS N5°W, 2.0'
 26" MAPLE, S4°E, 24.2' (SCRIBED)
 40" CEDAR, N71°W, 77.5' (SCRIBED)

"B" S.E. 1/16 CORNER
 SET 1/2" x 36" IRON PIPE & BRASS CAP
 19" MAPLE, SOUTH, 64.1' (SCRIBED)
 24" MAPLE, S76°E, 39.6' (SCRIBED)

"C" EAST 1/16 CORNER
 SET 1/2" x 36" IRON PIPE & BRASS CAP
 28" MAPLE, S45°W, 152.8' (SCRIBED)
 32" MAPLE, N9°E, 66.9' (SCRIBED)

"D" C.S. 1/16 CORNER
 SET 1/2" x 36" IRON PIPE & BRASS CAP
 14" MAPLE, S48°W, 21.8' (SCRIBED)
 20" FIR, S82°E, 29.1' (SCRIBED)

"E" CENTER 1/4 CORNER
 SET 1/2" x 36" IRON PIPE & BRASS CAP
 19" ALDER, N10°W, 32.0' (SCRIBED)
 37" FIR, S58°E, 37.4' (SCRIBED)

"F" C.N. 1/16 CORNER
 SET 1/2" x 36" IRON PIPE & BRASS CAP
 24" ALDER, S45°E, 40.3' (SCRIBED)
 54" CEDAR, N37°W, 32.4' (SCRIBED)

"G" N.E. 1/16 CORNER
 SET 1/2" x 36" IRON PIPE & BRASS CAP
 16" FIR, S14°W, 31.5' (SCRIBED)
 24" FIR, N82°E, 47.0' (SCRIBED)

"H" NORTH 1/16 CORNER
 SET 1/2" x 36" IRON PIPE & BRASS CAP
 15" MAPLE, N14°E, 48.4' (SCRIBED)
 60" FIR, S46°W, 45.4' (SCRIBED)

"I" NORTH 1/16 CORNER
 SET 1/2" x 36" IRON PIPE & BRASS CAP
 12" TRIPLE MAPLE, N82°W, 28.3' (SCRIBED)
 20" ALDER, N17°E, 21.8' (SCRIBED)

"J" WEST 1/16 CORNER
 SET 1/2" x 36" IRON PIPE & BRASS CAP
 18" ALDER, N23°W, 44.6' (SCRIBED)
 30" MAPLE, S59°W, 5.8' (SCRIBED)

S.E. SECTION CORNER
 FD. 1953 G.L.O. BRASS CAP
 36" FIR STUMP, S64°E, 41.3' (SCAR VIS.), 1877 B.T.
 46" FIR STUMP, S29°W, 11.3' (NO MARKS), 1877 B.T.
 48" FIR STUMP, N23°E, 23.8' (NO MARKS), 1877 B.T.
 20" FIR, N37°W, 36.3' (SCAR VIS.), 1953 B.T.
 24" FIR STUMP, N23°E, 37.2' (SCAR VIS.), 1953 B.T.
 24" FIR STUMP, S60°W, 42.3' (SCAR VIS.), 1953 B.T.
 30" HEMLOCK STUMP, S78°E, 43.9' (SCAR VIS.), 1953 B.T.
 16" CEDAR, S82°W, 36.0' (SCRIBE VIS.), 1972 B.T.

SOUTH 1/4 CORNER
 FD. 1953 G.L.O. BRASS CAP
 50" FIR, N23°W, 34.7' (SCAR VIS.), 1953 B.T.
 50" FIR, S22°W, 81.0' (SCRIBE VIS.), 1975 C.S.B.T.

"K" N.W. 1/16 CORNER
 SET 1/2" x 36" IRON PIPE & BRASS CAP
 28" MAPLE, N41°E, 136.4' (SCRIBED)
 52" CEDAR, N12°W, 117.6' (SCRIBED)

"L" C.W. 1/16 CORNER
 SET 1/2" x 36" IRON PIPE & BRASS CAP
 24" HEMLOCK, N20°E, 14.6' (SCRIBED)
 31" MAPLE, S19°E, 7.1' (SCRIBED)

COUNTY SURVEYORS FILE DATA
 DO NOT REMOVE FROM OFFICE

MAP FILE 11.22-28