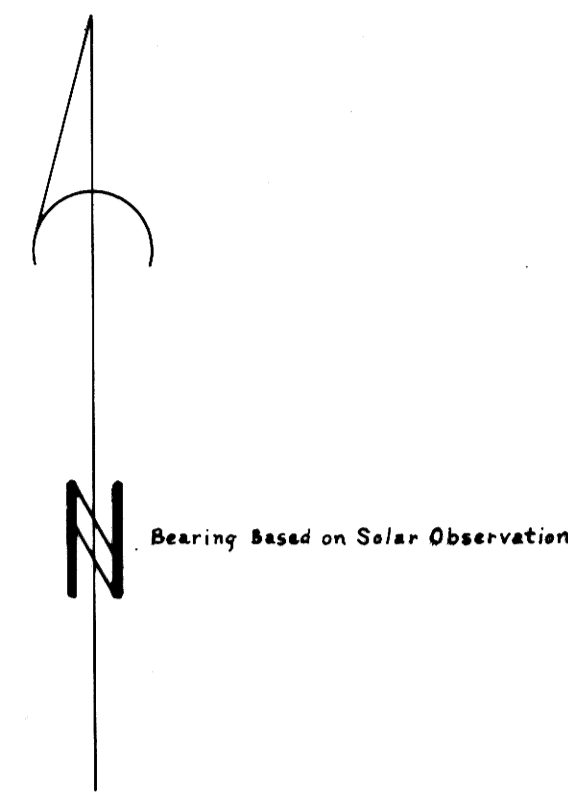


Resurvey and Subdivision of Sections 9 & 10, T 30 S, R 9 W, W. M., Oregon

For Roseburg Lumber Company

August 2, 1982

Scale: 1" = 400'



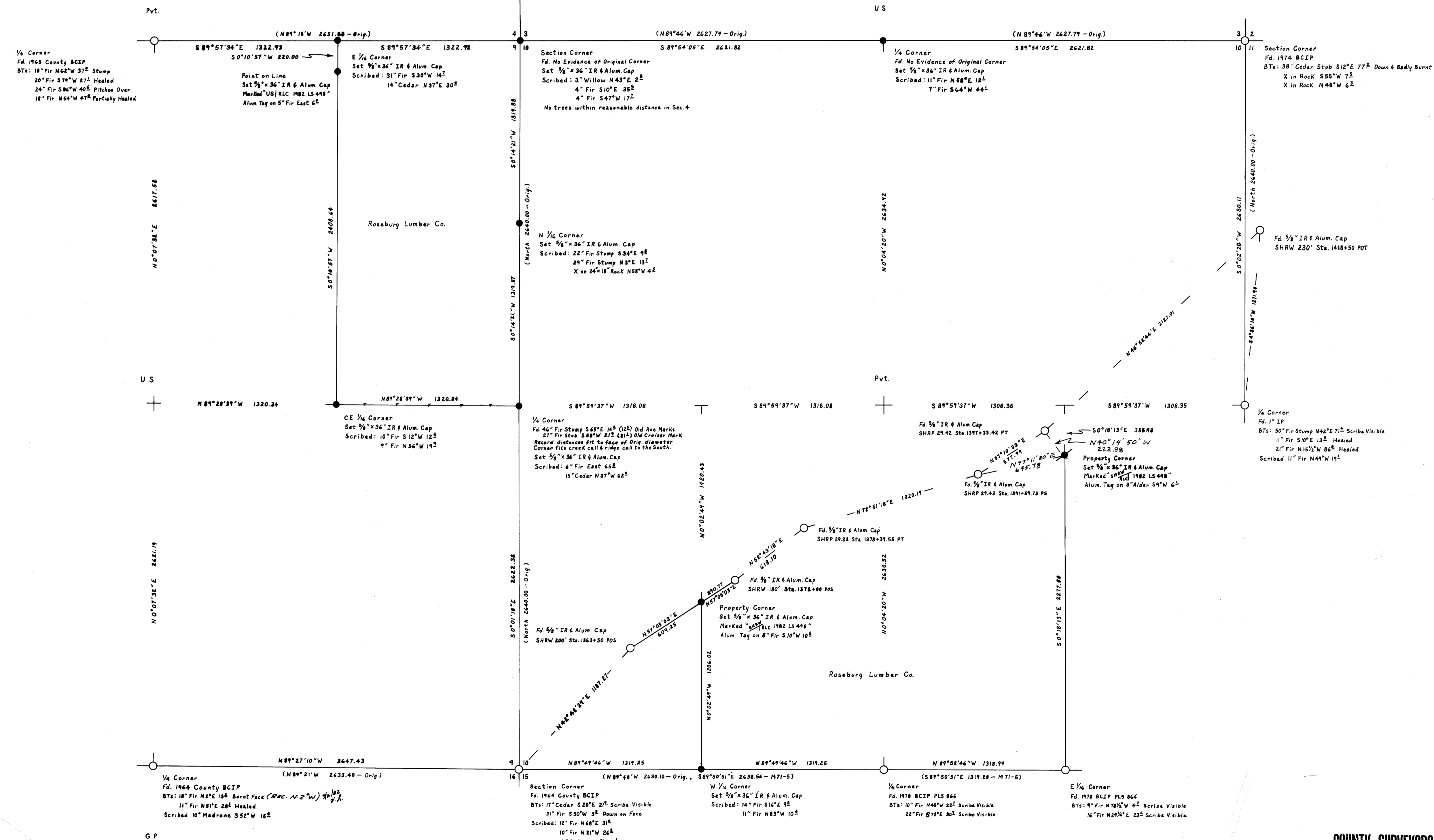
- Legend**
- Monument Found
 - Set 3/8" IR & Alum. Cap Marked LS 498"
 - Section or Property Line
 - Line Referenced to Alum. Tags
 - () Record Data

1/4 Corner
Fd. 1963 County BCIP
BTs: 28" Fir Stump S32°W 10"²
24" Fir Stump N26°E 11"²
23" Fir (Hemlock) N76°E 28"² Healed
18" Fir (Hemlock) N27°W 41² (42") Healed

I ran a closed traverse in Sections 9 & 10 using a Jena 1 second theodolite and a Mac I-E EDM. I achieved a precision of 1:37,816 and adjusted the traverse by the Crandall method. I set the corner to Sections 3, 4, 9 & 10 by double proportionate measurement and the 1/4 Corner to Sections 3 & 10 at a midpoint. I set the property corners in Section 10 on the right of way of State Highway 42 as shown on State Highway Division Plat 98-13-6. I set the other corners by standard subdivision procedure based on the location of the existing monuments.
Howard W. Johnstone P.O. Box 1088 Roseburg, Oregon

REGISTERED
PROFESSIONAL
LAND SURVEYOR
Howard W. Johnstone
OREGON
MAY 19, 1980
HOWARD W. JOHNSTONE
498

FILED
RECEIVED
SEP 14 1982
COUNTY SURVEYOR
DOUGLAS COUNTY, OREG.



1/4 Corner
Fd. 1965 County BCIP
BTs: 18" Fir N62°W 37² Stump
20" Fir S74°W 27² Healed
24" Fir S86°W 40² Pitched Over
18" Fir N56°W 47² Partially Healed

1/4 Corner
Fd. 1974 BCIP
BTs: 38" Cedar Stub S12°E 77² Down & Badly Burnt
X in Rock S55°W 7²
X in Rock N48°W 6²

Section Corner
Fd. No Evidence of Original Corner
Set 3/8" x 3/8" IR & Alum. Cap
Scribed: 31" Fir S30°W 14²
14" Cedar N37°E 30²
4" Fir S10°E 35²
4" Fir S47°W 17²
No trees within reasonable distance in Sec. 4

Section Corner
Fd. No Evidence of Original Corner
Set 3/8" x 3/8" IR & Alum. Cap
Scribed: 11" Fir N68°E 12²
7" Fir S64°W 44²

Section Corner
Fd. 1974 BCIP
BTs: 38" Cedar Stub S12°E 77² Down & Badly Burnt
X in Rock S55°W 7²
X in Rock N48°W 6²

Section Corner
Fd. 1974 BCIP
BTs: 38" Cedar Stub S12°E 77² Down & Badly Burnt
X in Rock S55°W 7²
X in Rock N48°W 6²

1/4 Corner
Fd. 1965 County BCIP
BTs: 18" Fir N62°W 37² Stump
20" Fir S74°W 27² Healed
24" Fir S86°W 40² Pitched Over
18" Fir N56°W 47² Partially Healed

CE 1/4 Corner
Set 3/8" x 3/8" IR & Alum. Cap
Scribed: 10" Fir S12°W 12²
9" Fir N56°W 19²

1/4 Corner
Fd. 46" Fir Stump S68°E 14² (15²) Old Axe Marks
27" Fir Stub S88°W 21² (21²) Old Curved Mark
Record distances fit to face of Drive Diameter
Corner fits creek call & fence call to the South.
Set 3/8" x 3/8" IR & Alum. Cap
Scribed: 6" Fir East 65²
15" Cedar N37°W 62²

1/4 Corner
Fd. 46" Fir Stump S68°E 14² (15²) Old Axe Marks
27" Fir Stub S88°W 21² (21²) Old Curved Mark
Record distances fit to face of Drive Diameter
Corner fits creek call & fence call to the South.
Set 3/8" x 3/8" IR & Alum. Cap
Scribed: 6" Fir East 65²
15" Cedar N37°W 62²

1/4 Corner
Fd. 46" Fir Stump S68°E 14² (15²) Old Axe Marks
27" Fir Stub S88°W 21² (21²) Old Curved Mark
Record distances fit to face of Drive Diameter
Corner fits creek call & fence call to the South.
Set 3/8" x 3/8" IR & Alum. Cap
Scribed: 6" Fir East 65²
15" Cedar N37°W 62²

1/4 Corner
Fd. 17² P
BTs: 50" Fir Stump N42°E 71² Scribe Visible
11" Fir S10°E 13² Healed
21" Fir N16 1/2°W 86² Healed
Scribed 11" Fir N44°W 14²

1/4 Corner
Fd. 1964 County BCIP
BTs: 18" Fir N41°E 19² Burnt Face (Rec. N 2")
11" Fir N81°E 28² Healed
Scribed 10" Madrone S52°W 16²

Section Corner
Fd. 1964 County BCIP
BTs: 17" Cedar S20°E 21² Scribe Visible
21" Fir S50°W 3² Down on Face
Scribed: 12" Fir N68°E 31²
10" Fir N21°W 26²
6" Cedar S46°W 11²

Section Corner
Fd. 1964 County BCIP
BTs: 17" Cedar S20°E 21² Scribe Visible
21" Fir S50°W 3² Down on Face
Scribed: 12" Fir N68°E 31²
10" Fir N21°W 26²
6" Cedar S46°W 11²

Section Corner
Fd. 1978 BCIP PLS 866
BTs: 10" Fir N68°W 22² Scribe Visible
22" Fir S72°E 30² Scribe Visible

Section Corner
Fd. 1978 BCIP PLS 866
BTs: 10" Fir N68°W 22² Scribe Visible
22" Fir S72°E 30² Scribe Visible

E 1/4 Corner
Fd. 1978 BCIP PLS 866
BTs: 10" Fir N68°W 22² Scribe Visible
22" Fir S72°E 30² Scribe Visible