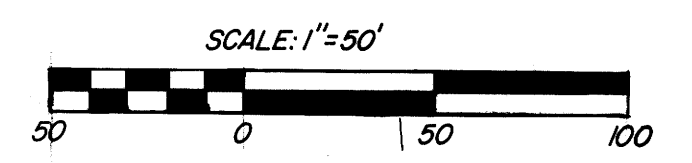
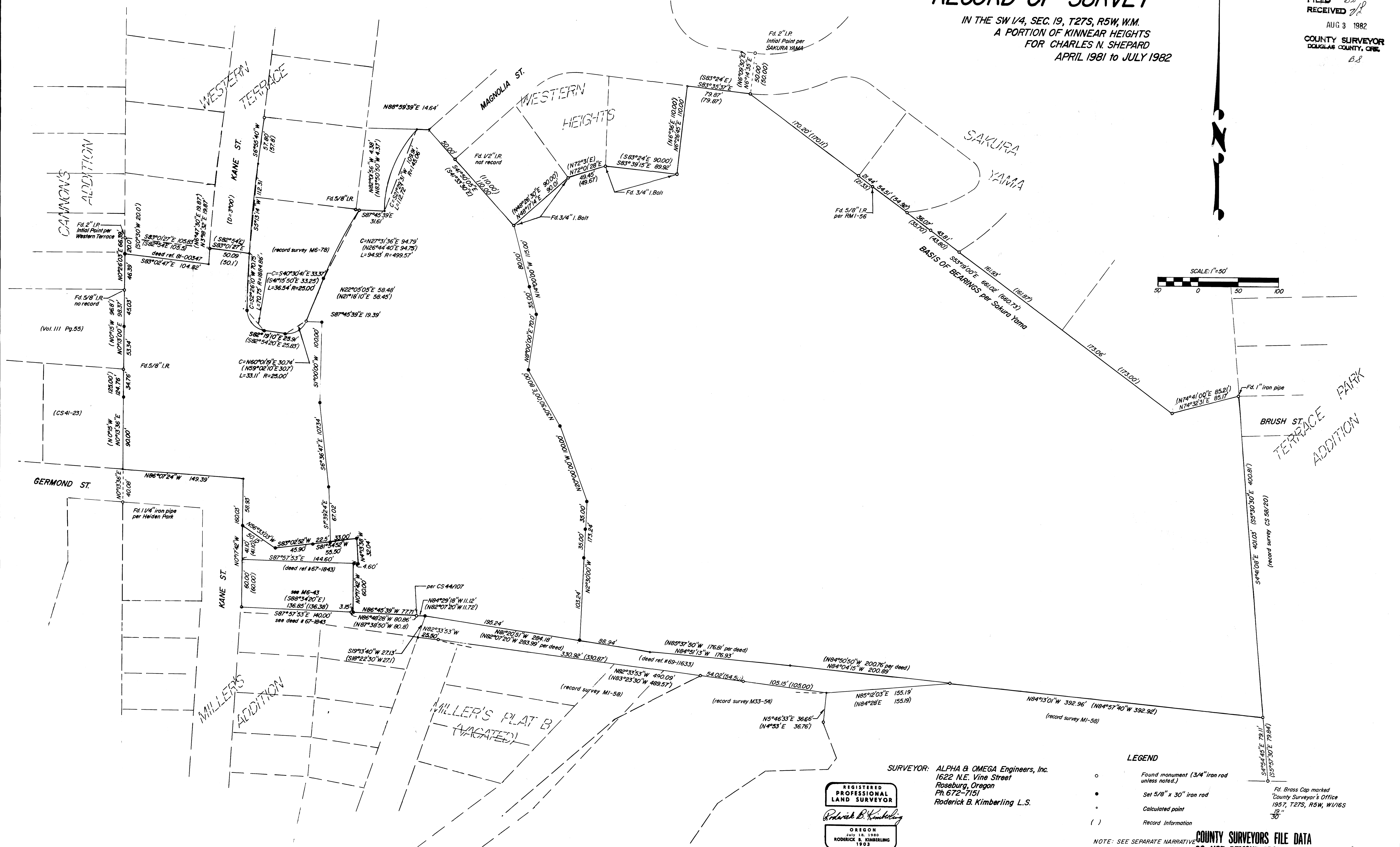


RECORD OF SURVEY

IN THE SW 1/4, SEC. 19, T27S, R5W, W1M.
 A PORTION OF KINNEAR HEIGHTS
 FOR CHARLES N. SHEPARD
 APRIL 1981 to JULY 1982

FILED 68
 RECEIVED 78
 AUG 3 1982
 COUNTY SURVEYOR
 DOUGLAS COUNTY, OREG.
 68

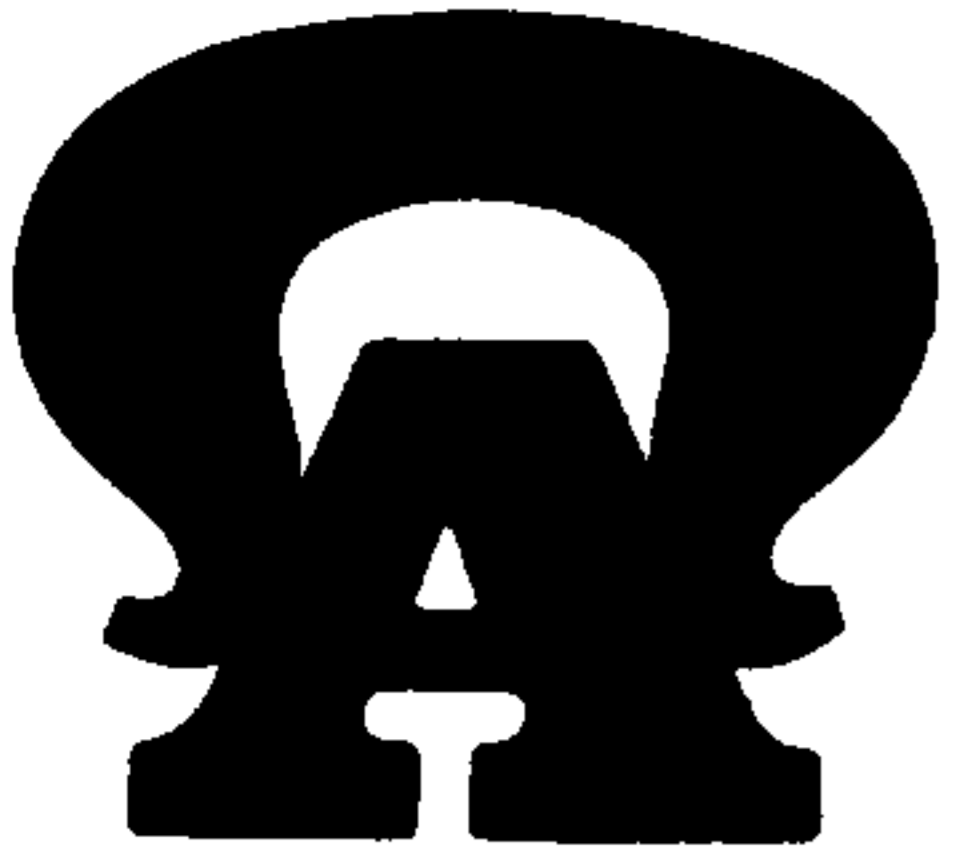


SURVEYOR: ALPHA & OMEGA Engineers, Inc.
 1622 N.E. Vine Street
 Roseburg, Oregon
 Ph. 672-7151
 Roderick B. Kimberling L.S.



- LEGEND**
- Found monument (3/4" iron rod unless noted.)
 - Set 5/8" x 30" iron rod
 - Calculated point
 - () Record information
- Fd. Brass Cap marked
 County Surveyor's Office
 1957, T27S, R5W, W1/16S
 19" / 30"

M 90-24



**ALPHA
AND
OMEGA
ENGINEERS
INC.**

Municipal Engineering
Subdivisions-Planning-Studies
Design-Inspection
Estimating-Surveying
Sewer-Water

1622 N.E. Vine • Frontier Village • Roseburg, Oregon 97470

• Phone (503) 672-7151
or
(503) 673-0823

NARRATIVE

To accompany filed survey plat

In SW ¼, Sec. 19, T27S, R5W, W.M.
A Portion of Kinnear Heights Tract
For Charles M. Shepard
April, 1981 to July, 1982

FILED

RECEIVED *BS*

AUG 3 1982

COUNTY SURVEYOR
DOUGLAS COUNTY, ORE.

PURPOSE:

The purpose of this survey originally was to subdivide the land delineated on the accompanying plat. Due to the slowed down economy, the subdivision was postponed after the monumentation of several corners. This plat is to record those monuments.

PROCEDURE:

The Basis of Bearings used was Sukura Yama Subdivision, in the City of Roseburg, Douglas County, Oregon.

The north line of this survey was controlled by found monuments per the shown subdivisions, deed reference number 81-00347 and survey M6-78.

The east line of this survey was controlled by found monuments per M1-58 and CS 58/20.

The south line was controlled by monuments per M 1-58, M 33-54, M 6-43 and deed reference numbers 69-11633 and 67-1843. Referring to deed reference number 69-11633 and M 1-58, record bearings were rotated 0°49'37" right to match the Basis of Bearings of this plat, and the record distances between found monuments were adjusted by the compass rule to establish the distances shown. Some evidence of an old fence was found along this line.

The east right-of-way line of South Kane Street and the north right-of-way line of Germond Street were established by the angle and distance calculated per CS 44/107, using the found 1½" iron pipe on the south right-of-way of Germond and the found ¾" iron rod on the east right-of-way line of South Kane Street to control.

The west line was established by found monuments as shown on the plat.

REGISTERED
PROFESSIONAL
LAND SURVEYOR

Roderick B. Kimberling

OREGON
July 18, 1980
RODERICK B. KIMBERLING
1903

File No. 58/259-5