

COUNTY SURVEYORS FILE DATA
DO NOT REMOVE FROM OFFICE

SURVEY IN SECTIONS 31 & 32, T27S, R5W, W.M.
AND IN SECTION 5, T28S, R5W, W.M.

FOR: BOISE CASCADE

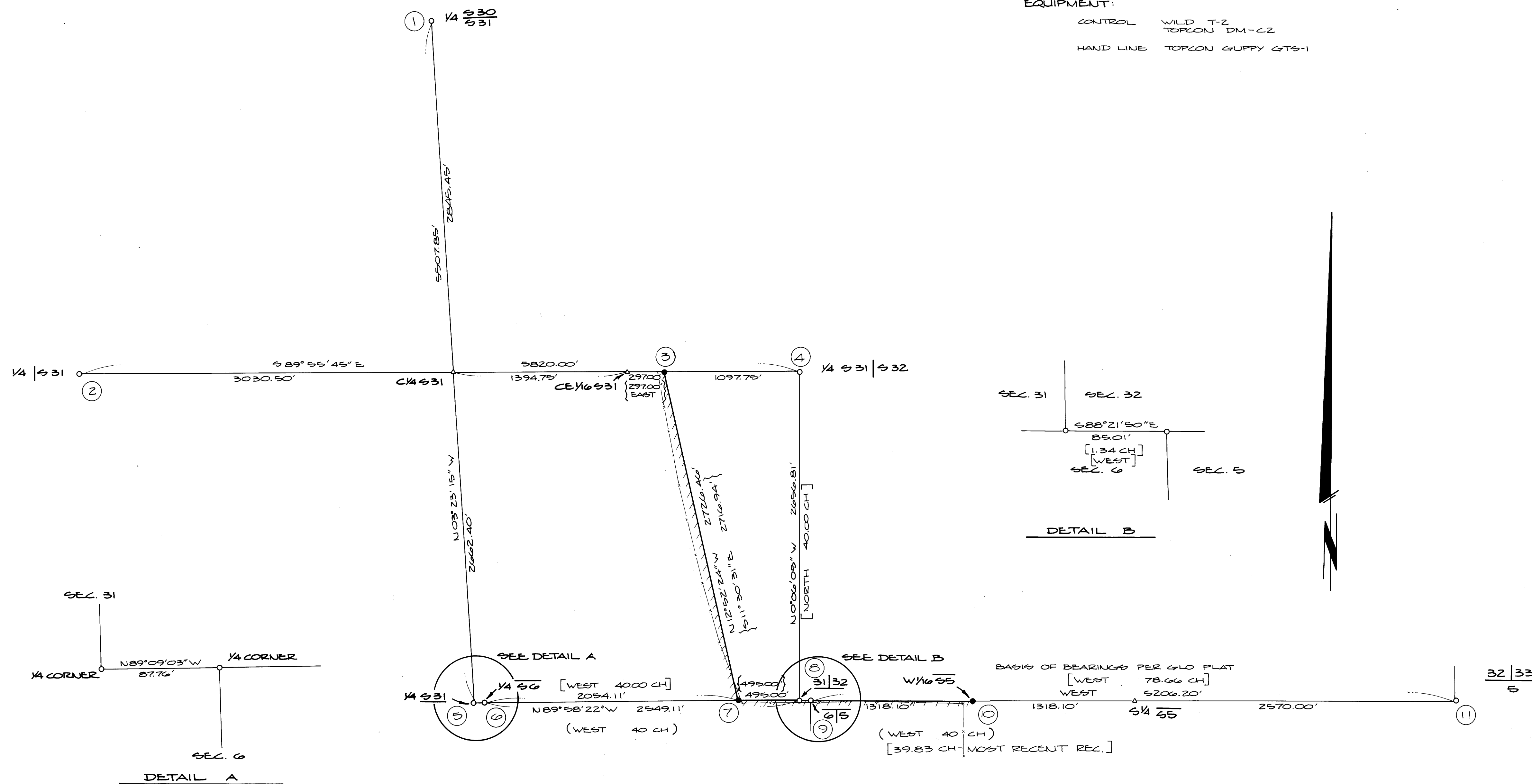
SCALE: 1" = 500'

JUNE 1982

BY: AA SURVEYING SERVICE, INC.
P.O. BOX 130 - ROSEBURG, OREGON

LEGEND:

- △ - NO MONUMENT SET, COMPUTED POINT ONLY
- - FOUND MONUMENT AS NOTED
- - SET MONUMENT AS NOTED
- LINE TAGGED, BLAZED & PAINTED
- - - FENCE LINE
- { } - RECORD CALL PER DESCRIPTION IN TITLE POLICY #641906, TITLE INSURANCE COMPANY OF OREGON, PARCEL 2.
- [] - RECORD CALL PER G.L.O. CONTRACT #3, DATED APRIL 7, 1853 BY ROBERT ELDER & HENRY S. GILE IN T27S, R5W.
- () - RECORD CALL PER G.L.O. CONTRACT #31 DATED APRIL 7, 1853 BY ROBERT ELDER AND HENRY S. GILE IN T28S, R5W.



NARRATIVE:

PURPOSE:

TO SET PROPERTY CORNERS FOR PARCEL IN SECTION 31, T27S, R5W, AS DESCRIBED IN TITLE INSURANCE POLICY #641906, PARCEL 2, TITLE INSURANCE COMPANY OF OREGON.

TO SET THE W 1/6 CORNER ON THE NORTH LINE OF SECTION 5, T28S, R5W.

TO MARK LINES BETWEEN SAID CORNERS.

PROCEDURE:

CONTROLLING CORNERS WERE FOUND AND TIED TO HIGH PRECISION CONTROL NETWORK.

A DILIGENT SEARCH WAS MADE FOR THE NORTH 1/4 CORNER OF SECTION 5 AND THE SOUTH 1/4 CORNER OF SECTION 32. THE AREA HAD BEEN LOGGED. THE BEARING TREES WERE OAKS. THERE ARE NO OAK STUMPS IN THE SEARCH AREA, BUT MOSTLY CEDARS, FIRS AND A FEW MADRONNES.

THE W 1/6 CORNER WAS PROPORTIONED USING THE SOUTHEAST CORNER OF SECTION 32 AND THE NORTHWEST CORNER OF SECTION 5 AS CONTROLLING CORNERS.

SECTION 31 WAS SUBDIVIDED. THE SOUTHEAST CORNER OF SECTION 31 WAS ACCEPTED AS FOUND MONUMENTED. I FOUND AN ORIGINAL BEARING TREE N70°50'W 63.8 FEET (RECORD N70°34'W 99 LKS). I FOUND THE CORNER TO SECTIONS 5 AND 6 S88°21'50"E 85.01 FEET (RECORD EAST 1.34 CH). THIS PUTS THE MONUMENT AT APPROXIMATELY THE PROPORTIONED DISTANCE BETWEEN THE TWO.

PROPERTY CORNERS IN SECTION 31 WERE ESTABLISHED PER DESCRIPTION CALLS.

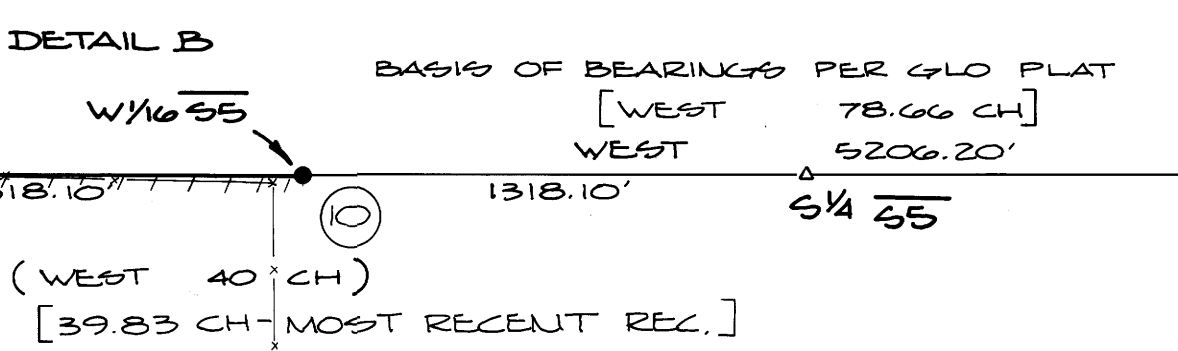
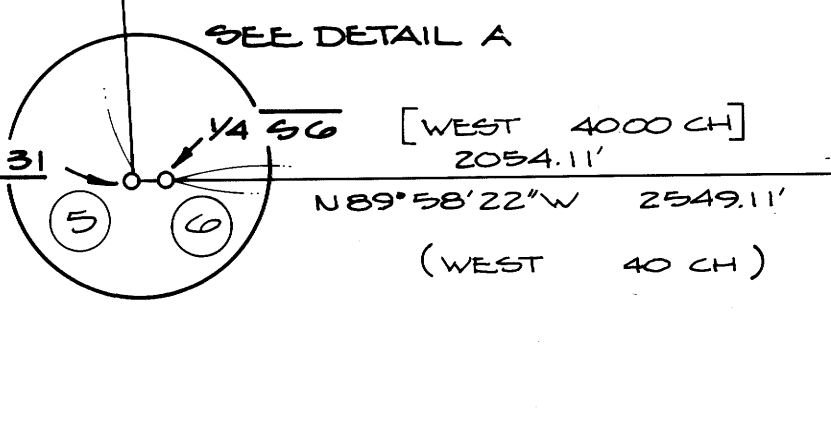
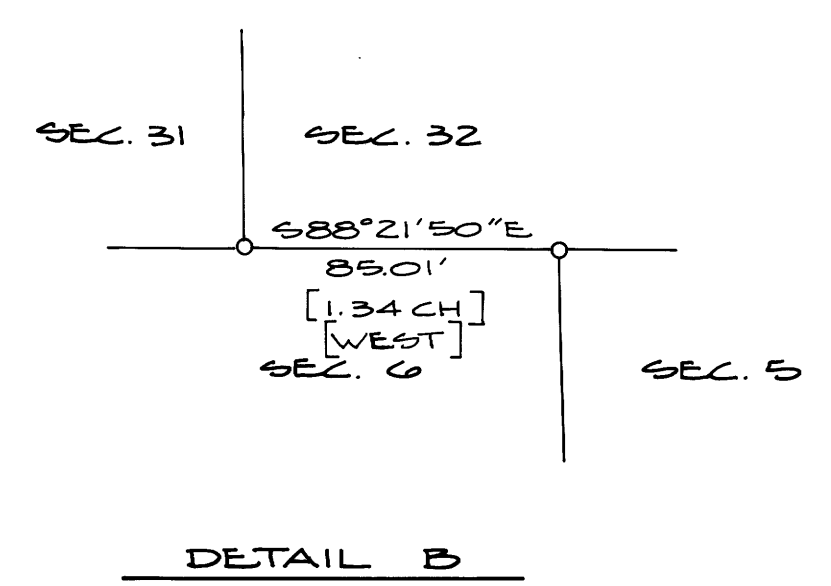
EQUIPMENT:

CONTROL WILD T-2
TOPCON DM-22

HAND LINE TOPCON GUPPY GTS-1

FILED 88
INDEXED 88
COUNTY SURVEYORS
OFFICE
ROSEBURG, OREGON
68

- 1/4 S30 S31 FOUND 5/8" IRON ROD WITH A 6" STEEL FENCE POST NEXT TO IT.
- T27S
1/4 S36 S31 FOUND 1" IRON PIPE WITH 2 1/2" BRASS CAP
R5W R5W
- 1 SET A 5/8" x 30" IRON ROD 29" INTO THE GROUND AND MARKED THE ATTACHED 2" ALUMINUM CAP "AA SURVEYING SERVICE, INC."
1 BLAZED AND SCRIBED TWO TREES:
15" MYRTLE N81°14'W 37.7 FT.
SCRIBED "LS 1651, B.T."
24" MAPLE S37°06'E 42.0 FT.
SCRIBED "LS 1651, B.T."
THE CORNER IS APPROXIMATELY S83°E 51.7 FT. FROM A FENCE (APPROXIMATE BEARING, N13°W).
- 1/4 S31 S32 FOUND 1" IRON PIPE WITH 2 1/2" BRASS CAP MARKED AS SHOWN:
- 1/4 S31 FOUND 3/4" IRON BOLT
- FOUND 3/4" IRON BOLT APPROXIMATELY 10 FT. SOUTH AND 4 FT. EAST OF FENCE CORNER (N-S-E).
- 1 SET A 5/8" x 30" IRON ROD 28" INTO THE GROUND AND MARKED THE ATTACHED 2" ALUMINUM CAP "AA SURVEYING SERVICE, INC."
1 BLAZED AND SCRIBED TWO TREES:
11" MAPLE N59°56'E 59.5 FT.
SCRIBED "LS 1651, B.T."
9" MAPLE N32°11'E 51.1 FT.
SCRIBED "LS 1651, B.T."
THE CORNER IS APPROXIMATELY 4.0 FT. WEST FROM A N-S FENCE AND 33.5 FT. NORTH FROM AN E-W FENCE.
- S31 S32 FOUND 1/2" BOLT WITH A 1" SQUARE HEAD
FOUND 24" DOUGLASS FIR N83°44'W 5.5 FT. WITH GOOD FACE SCAR
FOUND 28" DOUGLASS FIR STUMP AND LOG N73°50'W 63.8 FT. FACE HAS BEEN PREVIOUSLY OPENED. TREE BROKE OFF AT BOTTOM OF OPENING AND FELL. LOG IS ROTTEN BUT ON VERY PITZHY PIECE. FIND DEFINITE AND CLEAR "S31". THIS IS AN ORIGINAL B.T.
FOUND 32" DOUGLASS FIR N09°34'W 11.0 FT. WITH GOOD FACE SCAR.
- S36 S35 FOUND 1" IRON PIPE WITH A 2 1/2" BRASS CAP MARKED AS SHOWN BELOW. FOUND BOLT NEXT TO PIPE.
FOUND 60" DOUGLASS FIR S68°12'E 36.2 FT. SHOWS GOOD HEALED FACE WITH BARK SCRIBED "B.T." BELOW.
FOUND 48" DOUGLASS FIR S08°45'E 10.0 FT. SHOWS GOOD HEALED FACE WITH BARK SCRIBED "B.T." BELOW.
- 1 SET A 5/8" x 30" IRON ROD 29" INTO THE GROUND AND MARKED THE ATTACHED 2" ALUMINUM CAP AS SHOWN BELOW:
1 BLAZED AND SCRIBED TWO TREES:
10" BLACK OAK S20°27'W 29.9 FT.
SCRIBED "W 1/6 S5, B.T."
10" WHITE OAK S69°55'E 48.7 FT.
SCRIBED "W 1/6 S5, B.T."
- S32 S33 FOUND 1" IRON PIPE WITH A 2 1/2" BRASS CAP MARKED AS SHOWN:



REGISTERED
PROFESSIONAL
LAND SURVEYOR
Norman A. Pieske
OREGON
JULY 23, 1978
HERMAN A. PIESKE
1951

COUNTY SURVEYORS FILE DATA
DO NOT REMOVE FROM OFFICE