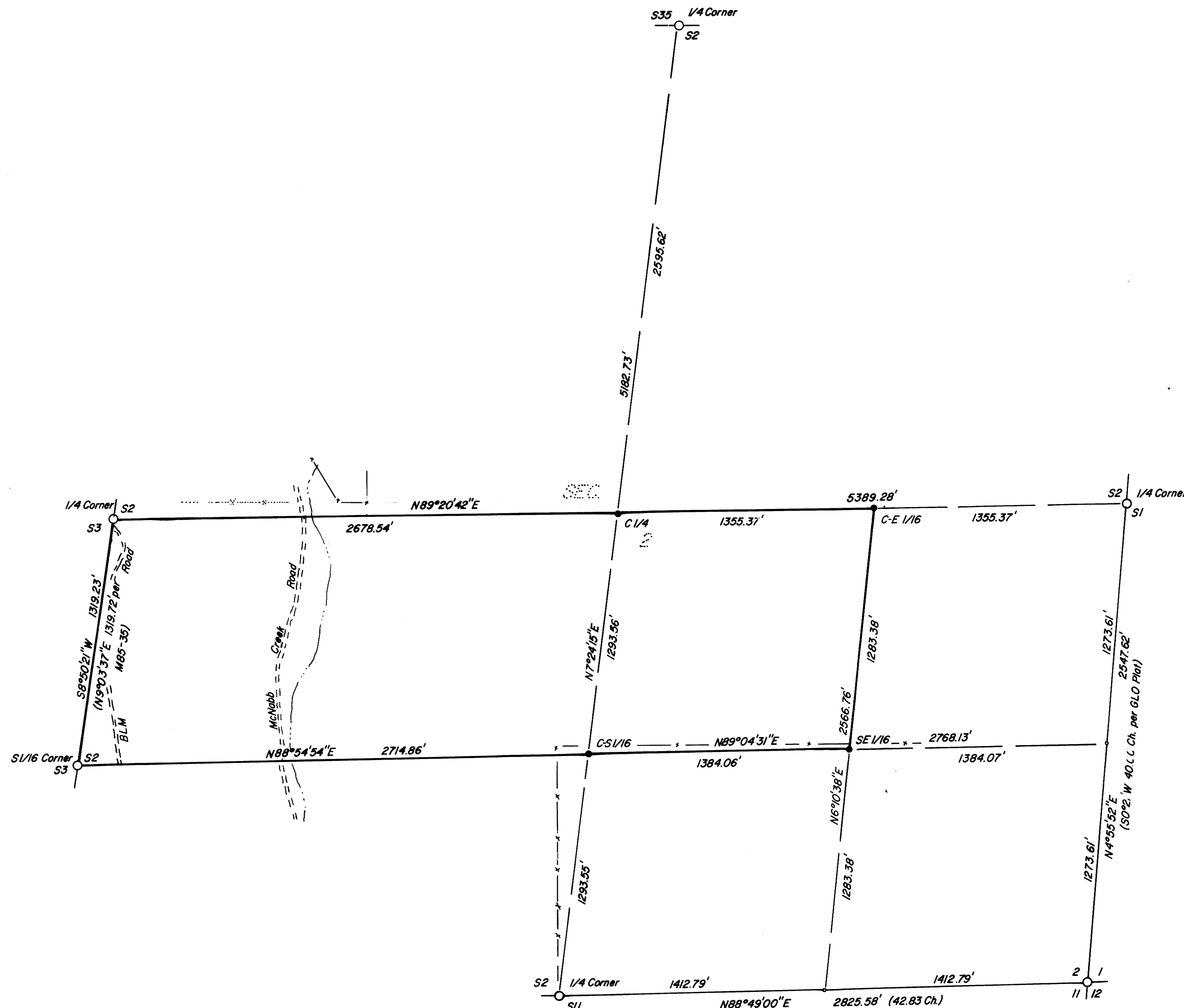


RECORD OF SURVEY

SECTION 2, T29S, R7W, W.M.
DOUGLAS COUNTY, OREGON
FOR
MICHAEL J. WINTERS
FEBRUARY 1982

FILED *BJ*
RECEIVED *JH*
MAR 26 1982
COUNTY SURVEYOR
DOUGLAS COUNTY, OREG.
BJ



BASIS OF BEARINGS per Dependant Resurvey
by Hans W. Thielsen March 29, 1957
Vol. 28, Page 12154, Government Field Notes

FOUND CORNERS

1/4 CORNER COMMON TO SEC. 2 & SEC. 3, T29S, R7W

Found 1" Iron Pipe with Brass Cap 12" above ground
marked "T29S R7W"
S3 | S2
1980
RL5 536

from which a:
10" Douglas fir w/ "1/4 S3 BT" scribing visible in
partially healed double blaze bears N35°W 30.0'
30" Madrone w/ "1/4 S2 BT" scribing visible
bears S62°E 61.3'

S 1/16 CORNER COMMON TO SEC. 2 & SEC. 3, T29S, R7W

Found 2" Iron Pipe with BLM Brass Cap 12" above ground
marked "T29S R7W"
S1/16
S3 | S2
1981

from which a:
5/8" Iron Rod bears Due South 0.2'
10" Douglas fir w/ "1/16 S3" scribing visible in
partially healed double blaze bears S46°W 23.0'
8" Douglas fir w/ "1/16 BT" scribing visible in
partially healed double blaze bears N41°E 13.3'

1/4 CORNER COMMON TO SEC. 35, T28S, R7W & SEC. 2, T29S, R7W

Found 1" Iron Pipe with DCSO Brass Cap 15" above ground
marked "T28S"
S35 | S2
1/4 | S2
T29S
1961

from which a:
12" now 13" Douglas fir with well healed double blaze
bears N35°E 2.5'
19" now 22" Douglas fir with well healed double blaze
bears S45°E 12.0'

1/4 CORNER COMMON TO SEC. 1 & SEC. 2, T29S, R7W

Found 1" Iron Pipe with DCSO Brass Cap 12" above ground
marked "T29S R7W"
1/4
S2 | S1
1969

from which a:
28" now 30" Douglas fir with well healed blaze bears
N31°E 58.5'
13" now 14" Douglas fir with well healed blaze bears
N53°W 53.1'
36" Fir stump bears N30°E 3.0'

SEC. CORNER COMMON TO SECS. 1, 2, 11, 12, T29S, R7W

Found 2" Iron Pipe with GLO Brass Cap 18" above ground
marked "T29S R7W"
S2 | S1
S11 | S12
1957

from which a:
12" now 15" W. Oak with well healed blaze bears
N29°W 262.7' (263.6)
9" now 12" W. Oak with well healed blaze bears
S22°W 11.9' (12.5)
30" now 36" W. Oak with well healed blaze bears
S80 1/4°E 225.5'
1 1/2" Iron Pipe bears Due South 0.3'

1/4 CORNER COMMON TO SEC. 2 & SEC. 11, T29S, R7W

Found 1" Iron Pipe with GLO Brass Cap 12" above ground
marked "T29S R7W"
1/4 | S2
S11
1957

from which a:
15" now 24" Douglas fir with well healed blaze bears
S57 1/2°E 21.8'
12" now 15" Douglas fir with well healed blaze bears
N32°W 40.2'
24" now 30" Douglas fir with burned out blaze
bears S72°W 17.2'
1 1/2" Iron Pipe at S.E. edge of B.C.
N-S-W fence corner at Corner

SET CORNERS

CENTER 1/4 CORNER, SEC. 2, T29S, R7W

Set 5/8" x 30" iron rod with 3/4" brass washer marked
"LS1903" from which a:
24" 1. Cedar bears N13°W 33.6 ft. scribed
"C1/4 S2 BT" in a double blaze
12" 1. Cedar bears S38°E 38.1 ft. scribed
"C1/4 S2 BT" in a double blaze.

CENTER EAST 1/16 CORNER, SEC. 2, T29S, R7W

Set 5/8" x 30" iron rod with 3/4" brass washer marked
"LS1903" from which a:
12" Douglas fir bears N2°W 16.7 ft. scribed
"CE 1/16 BT" in a double blaze.
6" Douglas fir bears S66°E 19.0 ft. scribed
"CE 1/16 BT" in a double blaze.

SOUTHEAST 1/16 CORNER, SEC. 2, T29S, R7W

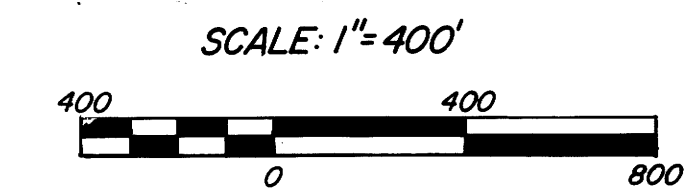
Set 5/8" x 30" iron rod with 3/4" brass washer marked
"LS1903" from which a:
10" W. Oak bears N36°E 51.5 ft. scribed
"SE 1/16 BT" in a double blaze.
24" Douglas fir bears N30°W 63.5 ft. scribed
"SE 1/16 BT" in a double blaze.

CENTER SOUTH 1/16 CORNER, SEC. 2, T29S, R7W

Set 5/8" x 30" iron rod with 3/4" brass washer marked
"LS1903" from which a:
24" Douglas fir bears N7°W 55.0 ft. scribed
"CS 1/16 BT" in a double blaze.
24" Douglas fir bears S83°W 68.6 ft. scribed
"CS 1/16 BT" in a double blaze.

NARRATIVE

The purpose of this plat is to record the survey of lands represented hereon
in which the boundaries of the N1/2 of the SW 1/4 and the NW 1/4 of the
SE 1/4 of Sec. 2, T29S, R7W, W.M. were established. A 20" theodolite and
EDM were used.



LEGEVD

- Found standard monument and accessories as noted
 - Set monument and accessories as noted
 - Property line established and marked
 - Calculated Corner not set
 - - - Fence
 - ⋯ Evidence of old fence
- Note: Locations of creeks, fences and roads are not to scale.

SURVEYOR Roderick B. Kimberling
Alpha and Omega Engineers, Inc.
1622 N.E. Vine St.
Roseburg, Oregon

