

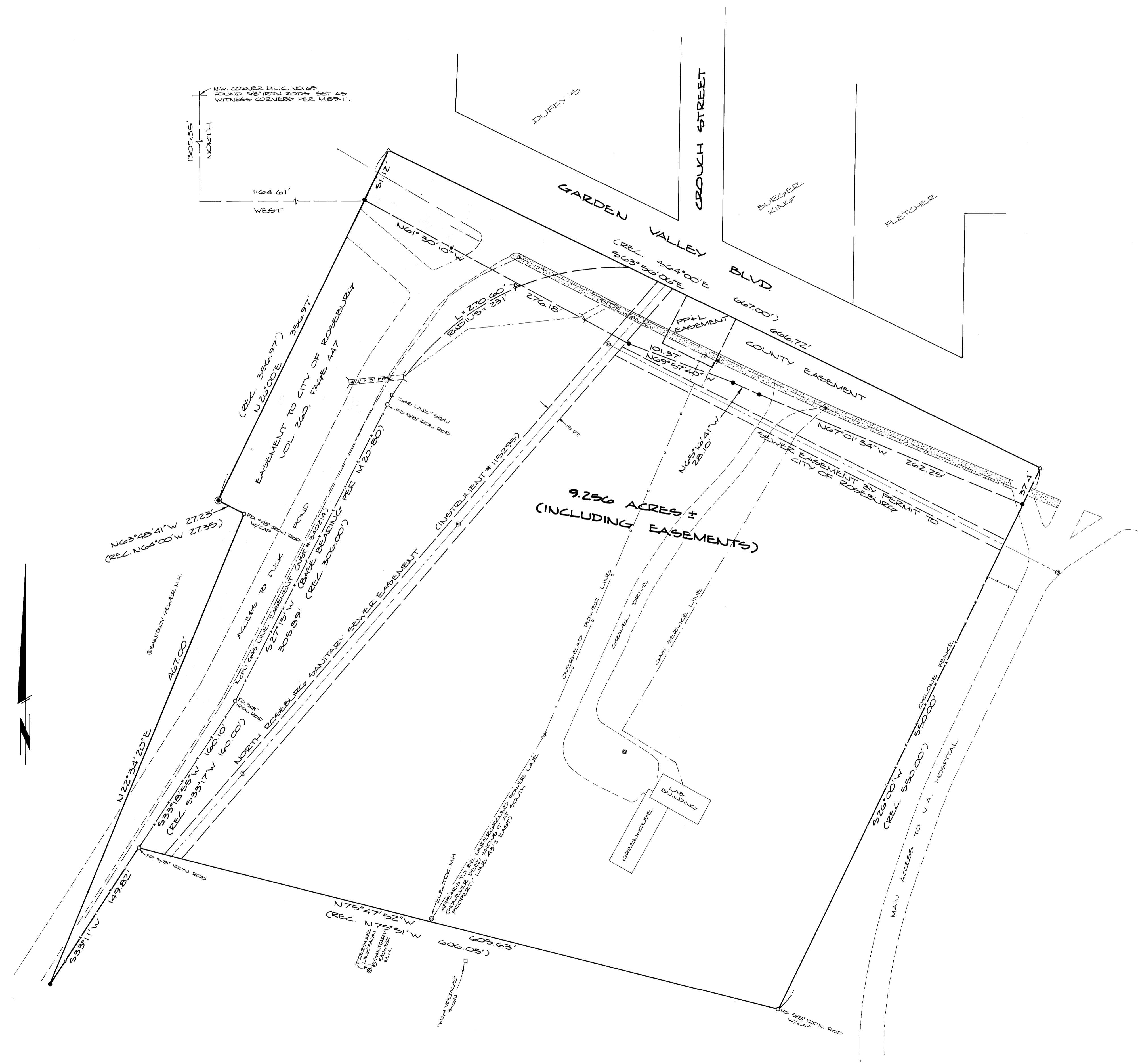
SURVEY IN THE S.E. 1/4 OF SECTION 11 AND THE NE 1/4 OF SECTION 14, T27S, R6W, W.M.

FOR: LARRY MICHAELS
BY: BHW ENGINEERING & SURVEYING, INC.
1205 S.E. COURT - ROSEBURG, OREGON

SCALE: 1" = 50'
DECEMBER 1981

FILED
RECEIVED
JAN 1 1982
COUNTY SURVEYOR
DOUGLAS COUNTY, ORE.

REGISTERED
PROFESSIONAL
LAND SURVEYOR
Romano E. Ware
OREGON
1964 AND
ROMANSO & WARE
1985



NARRATIVE:

SURVEY TO LOCATE AND MONUMENT THAT PROPERTY PREVIOUSLY SURVEYED BY LEZKLEIDER IN 1961 AS PER M20-80 RECORDED IN COUNTY SURVEYOR'S OFFICE.

FIELD CREW: ROMNEY WARE, DON BENTZ, RON QUIMBY

OFFICE COMPUTATIONS & DRAFTING: ROMNEY WARE AND DEBBIE HOPKINS

FIELD EQUIPMENT: WILD T-1 THEODOLITE MOUNTED WITH LEITZ RED-1 EDM.

LEGEND:

- FOUND BRASS CAP
- FOUND MONUMENT AS NOTED
- SET 5/8" x 30" IRON ROD W/CAP MARKED "BHW, INC."
- △ COMPUTED POINT - NO MONUMENT SET

- ⊙ MANHOLE
- SIGN AS NOTED
- ✕ TELEPHONE POLE
- ✦ LIGHT POLE
- ✧ POWER POLE
- ⊠ STS DRAIN
- GAS VALVE

- DRAINAGE
- SANITARY SEWER
- UNDERGROUND POWER
- OVERHEAD POWER
- GAS
- FENCE