

CLOSING CORNER SECTIONS 18 & 19

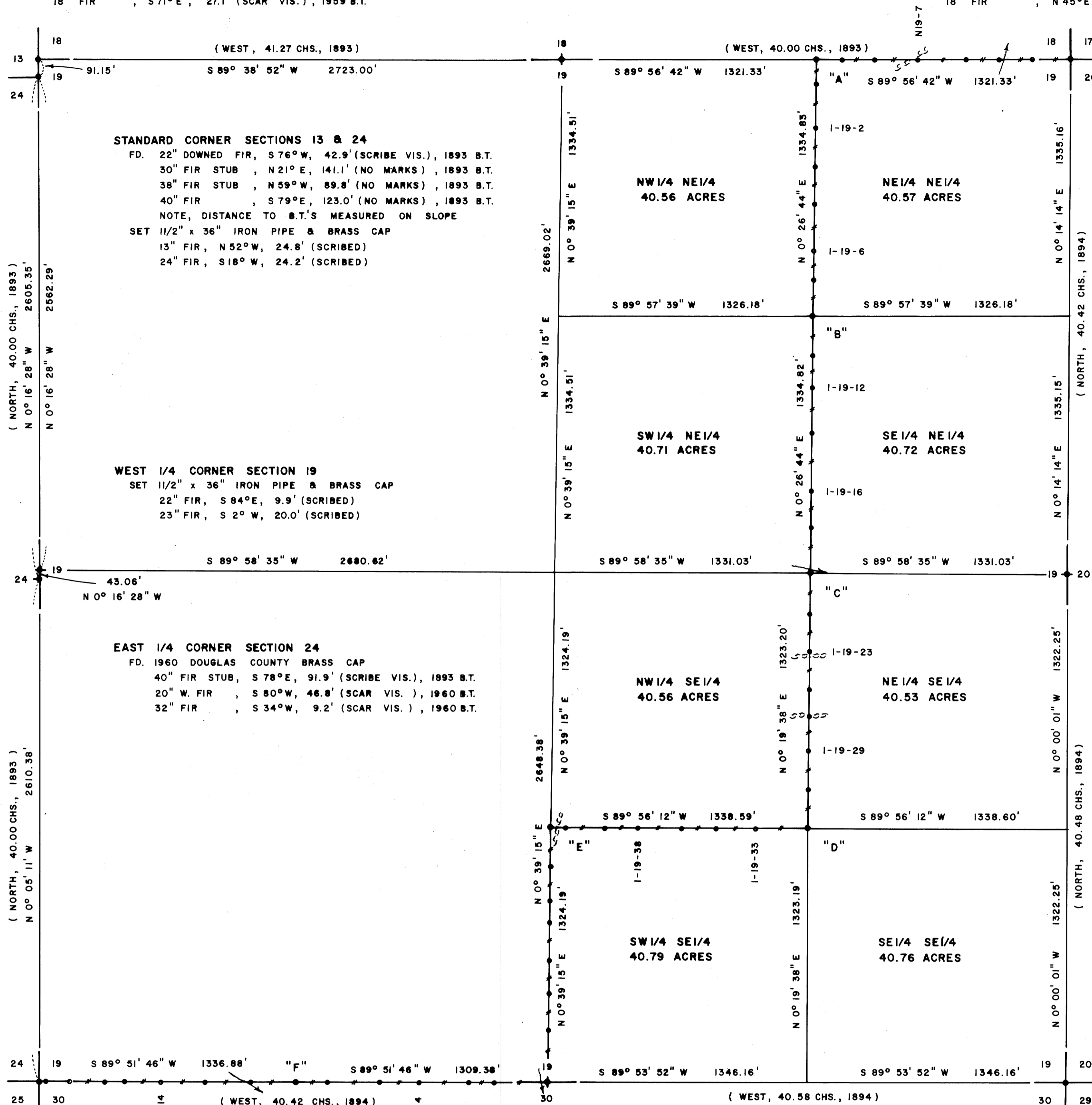
FD. 1959 DOUGLAS COUNTY BRASS CAP
30" FIR STUB, N 56° E, 56.8' (NO MARKS), 1893 B.T.
60" FIR, N 65° W, 100.3' (SCAR VIS.), 1893 B.T.
6" FIR, S 77° W, 22.0' (SCAR VIS.), 1959 B.T.
14" FIR, N 21° E, 36.8' (SCAR VIS.), 1959 B.T.
18" FIR, S 71° E, 27.1' (SCAR VIS.), 1959 B.T.

NORTH 1/4 CORNER

FD. 1959 DOUGLAS COUNTY BRASS CAP
10" W. FIR, S 44° W, 30.2' (SCAR VIS.), 1959 B.T.
16" FIR, N 59° E, 8.0' (SCAR VIS.), 1893 B.T.

N.E. SECTION CORNER

FD. 1960 DOUGLAS COUNTY BRASS CAP
38" FIR SNAG, N 1° E, 25.5' (SCRIBE VIS.), 1857 B.T.
14" FIR STUMP, S 78° E, 22.7' (SCAR VIS.), 1960 B.T.
14" W. FIR, N 5° W, 64.3' (SCAR VIS.), 1960 B.T.
16" W. FIR, S 61° W, 64.6' (SCAR VIS.), 1960 B.T.
18" FIR, N 45° E, 69.0' (SCAR VIS.), 1960 B.T.



LOCATION OF 1/2" IRON RODS

N.E. COR.		S.E. 1/16 COR.	
N19-1	197' WEST	I-19-33	271' WEST
N19-3	371' WEST	I-19-34	475' WEST
N19-5	545' WEST	I-19-35	657' WEST
N19-7	796' WEST	I-19-38	884' WEST
N19-8	1020' WEST	I-19-39	1055' WEST
N19-10	1191' WEST	I-19-40	1261' WEST
E. 1/16	1321' WEST	C. S. 1/16	1339' WEST
I-19-1	124' SOUTH	I-19-43	205' SOUTH
I-19-2	355' SOUTH	I-19-45	387' SOUTH
I-19-3	561' SOUTH	I-19-46	495' SOUTH
I-19-5	750' SOUTH	I-19-48	692' SOUTH
I-19-6	996' SOUTH	I-19-50	864' SOUTH
I-19-7	1143' SOUTH	I-19-52	1054' SOUTH
N.E. 1/16	1335' SOUTH	S. 1/4	1324' SOUTH
I-19-10	1543' SOUTH	S19-2	279' WEST
I-19-12	1711' SOUTH	S19-3	407' WEST
I-19-14	1946' SOUTH	S19-4	666' WEST
I-19-16	2245' SOUTH	S19-5	870' WEST
I-19-18	2433' SOUTH	S19-7	1139' WEST
C. E. 1/16	2670' SOUTH	W. 1/16	1309' WEST
I-19-22	213' SOUTH	S19-10	1543' WEST
I-19-23	404' SOUTH	S19-12	1775' WEST
I-19-25	604' SOUTH	S19-14	2008' WEST
I-19-27	743' SOUTH	S19-16	2197' WEST
I-19-29	927' SOUTH	S19-17	2301' WEST
I-19-31	1123' SOUTH	S19-18	2487' WEST
S.E. 1/16	1323' SOUTH	S19-19	2608' WEST
		S.W. COR.	2646' WEST

EAST 1/4 CORNER

FD. 1958 DOUGLAS COUNTY BRASS CAP
21" FIR, N 62° W, 67.7' (SCAR VIS.), 1958 B.T.
26" CEDAR, S 27° E, 77.0' (SCAR VIS.), 1958 B.T.

SURVEY OF
SECTION 19, T24S, R7W, W.M.
DOUGLAS COUNTY, OREGON
FOR
INTERNATIONAL PAPER COMPANY
BY
ROBERTS SURVEYING INC.
29 WEST 29TH STREET
EUGENE, OREGON 97405
NOVEMBER 20, 1981

REGISTERED
PROFESSIONAL
LAND SURVEYOR

Les Roberts
OREGON
L.D. ROBERTS
1989

LEGEND

- CORNERS FOUND AND USED FOR CONTROL
- CORNERS SET & CAPS STAMPED L.S. #1089 1/10/82 2R.
- +— LINES MARKED WITH RED PAINTED BLAZES, 1/2" x 60" IRON RODS, AND RED RIBBON
- () DATA OF RECORD
- BASIS OF BEARING, SOLAR OBSERVATION
- DISTANCE TO BEARING TREES ARE CENTER MEASURE
- ALL BEARING TREES ARE SCRIBED
- SCALE 1" = 400'

S.W. SECTION CORNER

FD. 1958 DOUGLAS COUNTY BRASS CAP
17" MAPLE, S 85° W, 39.2' (SCAR VIS.), 1893 B.T.
30" MAPLE, N 15° E, 46.0' (SCRIBE VIS.), 1893 B.T.
50" FIR STUMP, N 50° W, 45.4' (SCRIBE VIS.), 1893 B.T.
20" W. FIR, N 83° W, 63.5' (SCAR VIS.), 1958 B.T.

SOUTH 1/4 CORNER

FD. OLD AXLE SET IN 1928
18" MAPLE, S 78° W, 4.7' (SCRIBE VIS.), 1928 B.T.
44" DOWNED FIR, N 8° W, 39.1' (NO MARKS), 1928 B.T.
18" FIR, N 68° E, 77.4' (SCAR VIS.), 1970 B.T.

S.E. SECTION CORNER

FD. OLD AXLE SET IN 1928
30" FIR STUMP, S 89° E, 28.4' (SCRIBE VIS.), 1958 B.T.
34" OAK, N 86° E, 67.4' (SCAR VIS.), 1958 B.T.
18" FIR, N 15° E, 87.5' (SCAR VIS.), 1970 B.T.

"A" EAST 1/16 CORNER

SET 1/2" x 36" IRON PIPE & BRASS CAP
16" FIR, N 63° E, 14.8' (SCRIBED)
20" FIR, S 33° E, 13.6' (SCRIBED)

"D" S.E. 1/16 CORNER

SET 1/2" x 36" IRON PIPE & BRASS CAP
16" FIR, N 87° W, 270.0' (SCRIBED)
20" FIR, N 33° W, 163.6' (SCRIBED)

"B" N.E. 1/16 CORNER (W.C.)

SET 1/2" x 36" IRON PIPE & BRASS CAP
S 0° 26' 44" W, 5.00' FROM TRUE POSITION
8" W. FIR, S 36° E, 6.2' (SCRIBED)
36" FIR, N 7° W, 2.9' (SCRIBED)

"E" C.S. 1/16 CORNER

SET 1/2" x 36" IRON PIPE & BRASS CAP
14" FIR, S 34° W, 26.3' (SCRIBED)
32" FIR, S 68° E, 23.4' (SCRIBED)

"C" C.E. 1/16 CORNER

SET 1/2" x 36" IRON PIPE & BRASS CAP
10" FIR, N 3° E, 39.3' (SCRIBED)
11" FIR, S 81° W, 5.6' (SCRIBED)

"F" WEST 1/16 CORNER

SET 1/2" x 36" IRON PIPE & BRASS CAP
12" FIR, S 39° E, 26.2' (SCRIBED)
18" FIR, N 89° E, 9.4' (SCRIBED)

NARRATIVE

I, LESLIE ROBERTS, REGISTERED PROFESSIONAL LAND SURVEYOR DO CERTIFY THAT I HAVE CORRECTLY SURVEYED SAID SECTION 19 IN ACCORDANCE TO THE MANUAL OF INSTRUCTIONS FOR THE SURVEY OF THE PUBLIC LANDS OF THE UNITED STATES. THE STANDARD CORNER TO SECTIONS 13 & 24 WAS SET FROM EXISTING 1893 B.T.'S; HOWEVER SLOPE DISTANCE HAD TO BE USED IN ORDER TO MAKE THEM FIT. THE WEST 1/4 CORNER OF SECTION 19 WAS SET BY SINGLE PROPORTIONATE MEASUREMENT BETWEEN THE S.W. SECTION CORNER AND THE N.W. SECTION CORNER OF SECTION 19 AND WAS SET ON LINE BETWEEN THE EAST 1/4 CORNER AND THE N.E. SECTION CORNER OF SECTION 24. THE CENTER 1/4 CORNER WAS DETERMINED BY INTERSECTING THE N-S AND E-W CENTER LINES OF SECTION 19. THE EAST 1/16 CORNER BETWEEN SECTIONS 18 & 19 WAS SET HALF-WAY BETWEEN THE RESPECTIVE NORTH 1/4 CORNER AND N.E. SECTION CORNER. THE N.E. 1/16 CORNER WAS SET AT THE INTERSECTION OF THE N-S AND E-W CENTER LINES OF THE NE 1/4 OF SAID SECTION 19. THE C.E. 1/16 CORNER WAS SET HALF-WAY BETWEEN THE CENTER 1/4 CORNER AND THE EAST 1/4 CORNER OF SECTION 19. THE S.E. 1/16 CORNER WAS SET AT THE INTERSECTION OF THE N-S AND E-W CENTER LINES OF THE S.E. 1/4 OF SECTION 19. THE C.S. 1/16 CORNER WAS SET HALF-WAY BETWEEN THE CENTER 1/4 CORNER AND THE SOUTH 1/4 CORNER OF SECTION 19. THE WEST 1/16 CORNER BETWEEN SECTIONS 19 AND 30 WAS SET BY SINGLE PROPORTIONATE MEASURE BETWEEN THE RESPECTIVE SOUTH 1/4 CORNER AND S.W. SECTION CORNER OF SECTION 19. A CLOSED MEANDER TRANSIT AND E.D.M. TRAVERSE WAS RUN BETWEEN ALL FOUND CORNERS AND USED FOR CONTROL. A CLOSED MEANDER TRANSIT TRAVERSE WAS RUN THRU THE INTERIOR OF SECTION 19 AS SHOWN. OFFSETS WERE COMPUTED FROM THIS MEANDER TRAVERSE TO THE TRUE PROPERTY LINE.