

DO NOT REMOVE FROM OFFICE

S. 18 T. 22 S. R. 5 W. W.M.
 SE 1/4 NW 1/4 + NE 1/4 SW 1/4 Sect. 18

This is a copy of a map made for a minor land partition for Dolbert Garret - Drain, Oregon; it needs a zone change.

Scale 1" = 200' Oct 6, 1981

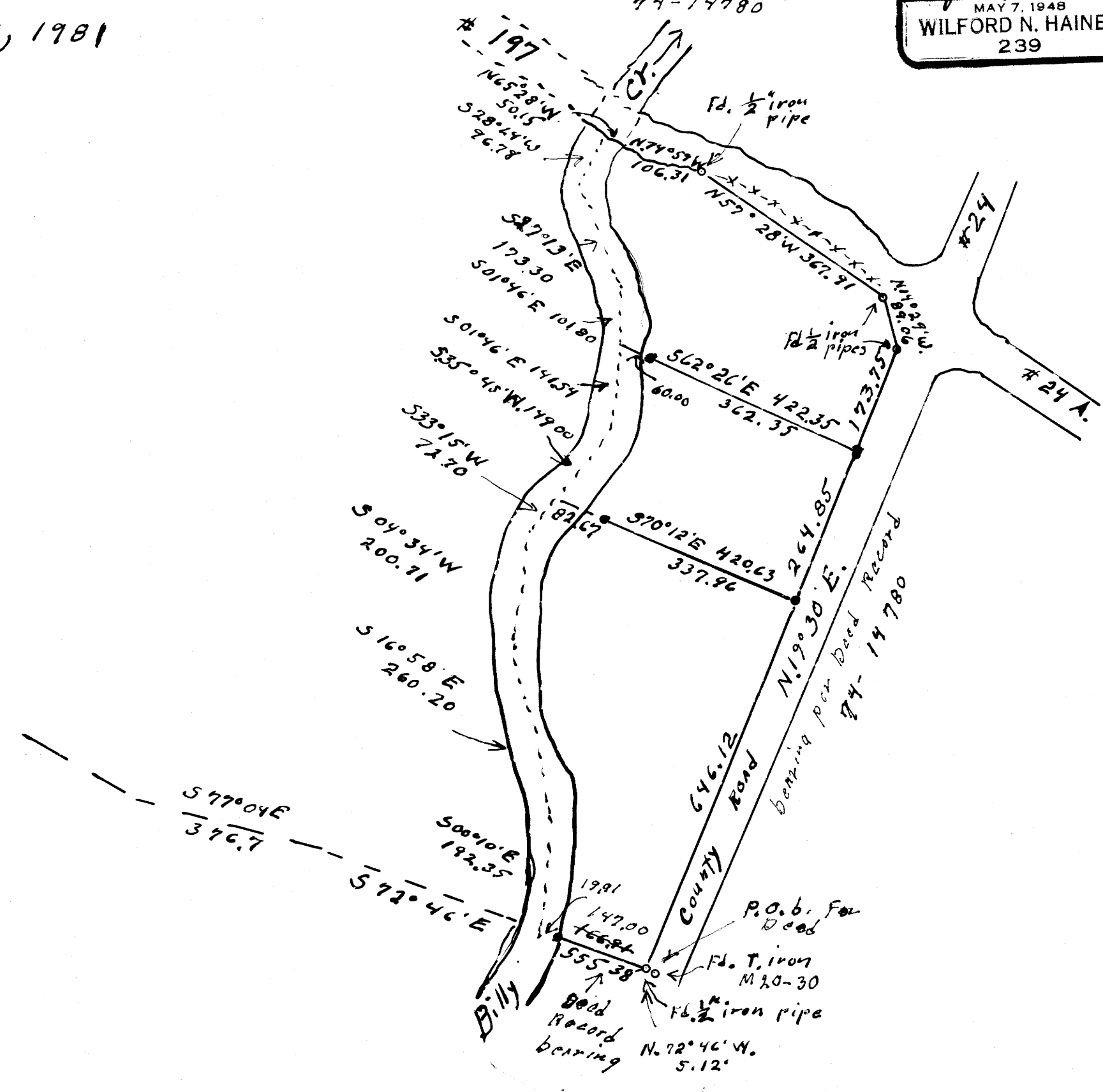
- set 5" Rebar this survey 40' in length set Sept. 1978
 - monuments found as indicated on drawing. No previous record except as noted
- Based on
 N. 19° 30' E.
 on County Road #24
 Deed records # 74-14780

Wilford N. Haines
 RT 38 Box 2
 Drain, Oregon 97435
 phone 936-1303



FILED
 RECEIVED
 JAN 11 1982
 COUNTY SURVEYOR
 DOUGLAS COUNTY, ORE.

1/4 Corner common to Sects.
 18 T. 22 S., R. 5 W., W.M.
 13 T. 22 S., R. 6 W., W.M.
 S 64° 45' E
 1037.9
 Fd. channel iron at corner
 8" Black Oak N 8 1/2° E 12.8'
 15" Black Oak N 18 1/2° W 168.2'
 County Records show Brass cap set by County in 1976



MAP FILE M 89-28

MAP FILE M 89-28