

FILED
RECEIVED

JAN 8 1982

COUNTY SURVEYOR
DOUGLAS COUNTY, ORE.

SURVEY NARRATIVE TO COMPLY WITH PARAGRAPH 209.250 OREGON REVISED STATUTES.

LEGEND

- OSBF P/C = OREGON STATE BOARD OF FORESTRY 1 1/2" x 36" GALVANIZED IRON PIPE WITH 3" BRONZE CAP
 - = SET 5/8" x 30" IRON ROD WITH 1 1/4" PLASTIC CAP STAMPED LS 1101
 - ⊙ = TRUE BLAZED AND POSTED
 - BTS = BEARING TREES
 - [] = RECORD BEARINGS AND DISTANCES (W.H.BYARS 1879, CONTRACT NO. 292)
 - () = RECORD BEARINGS AND DISTANCES (OSBF 1981 CORRECTION SURVEY)
- FOR DETAILED REPORT ON FOUND CORNERS SEE COUNTY RECORDS.

BASIS OF BEARING

SOLAR OBSERVATION

PURPOSE

TO SEPARATE STATE FOREST LANDS AND PRIVATE LANDS LOCATED IN THE SOUTHEAST ONE QUARTER (SE 1/4) OF SECTION 24, TOWNSHIP 23 SOUTH, RANGE 10 WEST, WILLAMETTE MERIDIAN.

PROCEDURE

A RANDOM TRAVERSE CONNECTING THE ONE QUARTER CORNER COMMON TO SECTIONS 24 AND 19, THE SECTION CORNER COMMON TO SECTIONS 24, 25, 19 AND 30 AND THE ONE QUARTER CORNER COMMON TO SECTIONS 24 AND 25 WAS USED TO GOVERN THE PROPERTY SURVEY IN THE SOUTHEAST ONE QUARTER (SE 1/4) OF SECTION 24, TOWNSHIP 23 SOUTH, RANGE 10 WEST, WILLAMETTE MERIDIAN. BEARINGS WERE ROTATED TO CORRESPOND TO THE OREGON STATE BOARD OF FORESTRY 1981 CORRECTION SURVEY OF SECTION 24, TOWNSHIP 23 SOUTH, RANGE 10 WEST, WILLAMETTE MERIDIAN. (MAP REFERENCE NO. M89-40)

CLOSING RATIO: 1:7,000
REFERENCE DEEDS: VOL. 298 PAGE 116 AND VOL. 471 PAGE 630
DOUGLAS COUNTY, RECORD OF DEEDS.

SURVEY FOR:
STATE OF OREGON - DEPARTMENT OF FORESTRY
SE 1/4 SECTION 24, T.23S., R.10W., W.M.
DOUGLAS COUNTY, OREGON
THEODOLITE & EDM SURVEY BY: J. McINTOSH,
A. KOREIVA AND T. VANVLEET
DRAWN BY: J. McINTOSH
NOVEMBER 30, 1981
SCALE: 1" = 400'

SURVEYED BY:

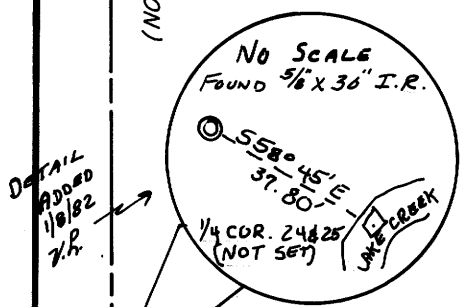
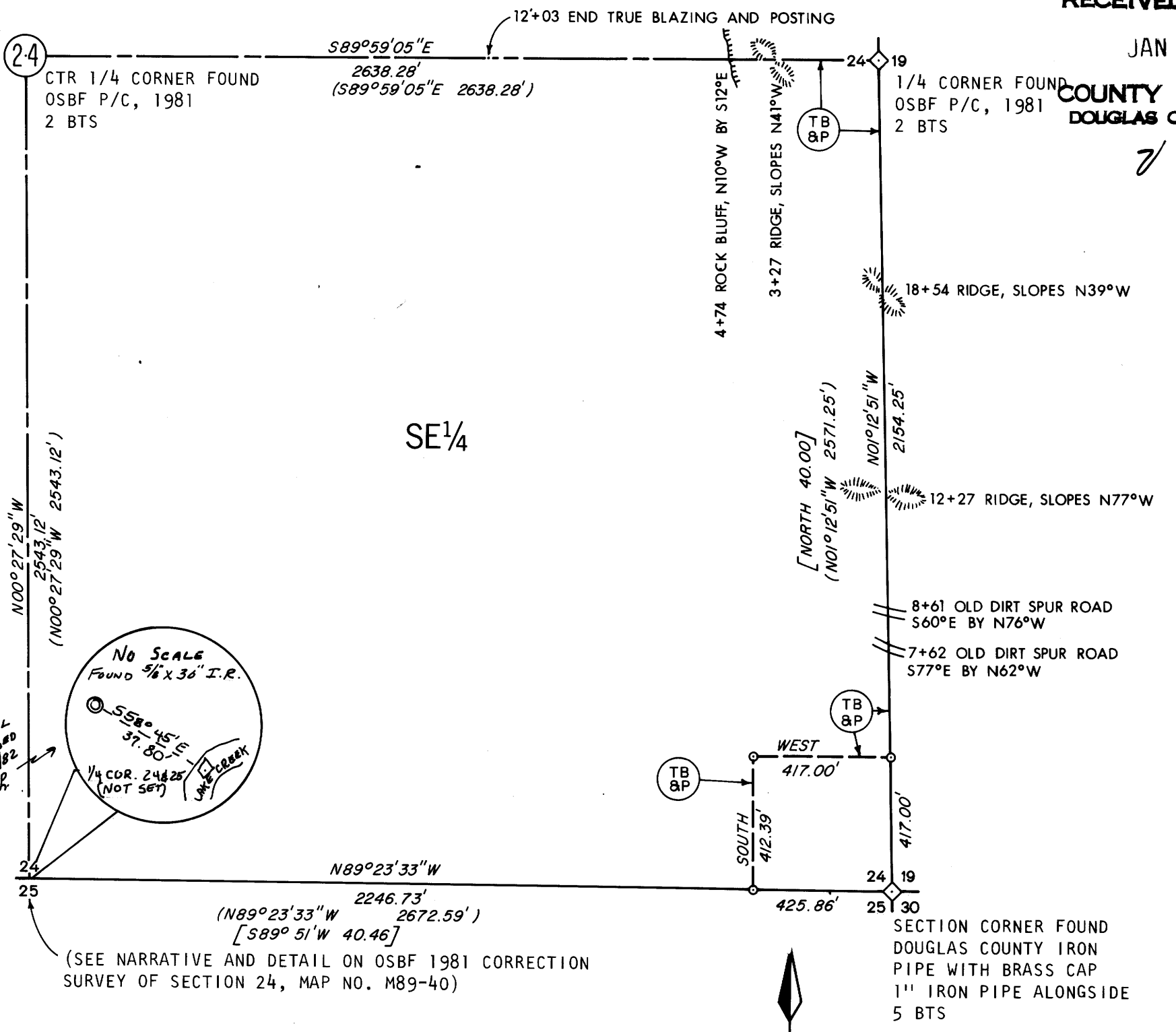
REGISTERED
PROFESSIONAL
LAND SURVEYOR

Lloyd D. Smith

OREGON
JULY 22, 1977
LLOYD D. SMITH
1101

LLOYD D. SMITH
300 5TH ST., BAY PARK
COOS BAY, OREGON

COUNTY SURVEYORS FILE DATA
DO NOT REMOVE FROM OFFICE



(SEE NARRATIVE AND DETAIL ON OSBF 1981 CORRECTION SURVEY OF SECTION 24, MAP NO. M89-40)

MAP FILE M89-76

MAP FILE M89-76

C-109

C-109
FB 12/9/81