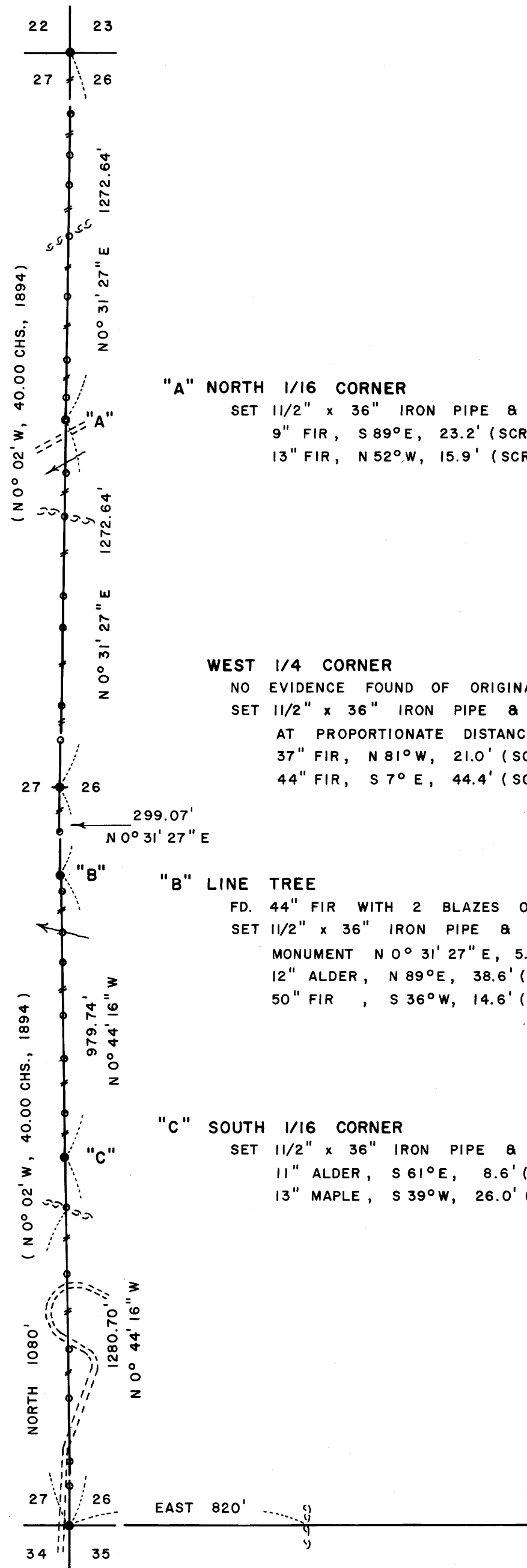


N.W. SECTION CORNER
FD. 50" FIR, S 41 1/2° W, 31.0' (SCRIBE VIS.), 1894 B.T.
SET 1 1/2" x 40" IRON PIPE & BRASS CAP
10" ALDER, N 57° E, 21.5' (SCRIBED)
17" FIR, S 32° E, 94.1' (SCRIBED)



"A" NORTH 1/16 CORNER
SET 1 1/2" x 36" IRON PIPE & BRASS CAP
9" FIR, S 89° E, 23.2' (SCRIBED)
13" FIR, N 52° W, 15.9' (SCRIBED)

WEST 1/4 CORNER
NO EVIDENCE FOUND OF ORIGINAL CORNER
SET 1 1/2" x 36" IRON PIPE & BRASS CAP
AT PROPORTIONATE DISTANCE
37" FIR, N 81° W, 21.0' (SCRIBED)
44" FIR, S 7° E, 44.4' (SCRIBED)

"B" LINE TREE
FD. 44" FIR WITH 2 BLAZES ON NORTH & SOUTH SIDES
SET 1 1/2" x 36" IRON PIPE & BRASS CAP REFERENCE
MONUMENT N 0° 31' 27" E, 5.00' FROM CENTER OF TREE
12" ALDER, N 89° E, 38.6' (SCRIBED)
50" FIR, S 36° W, 14.6' (SCRIBED)

"C" SOUTH 1/16 CORNER
SET 1 1/2" x 36" IRON PIPE & BRASS CAP
11" ALDER, S 61° E, 8.6' (SCRIBED)
13" MAPLE, S 39° W, 26.0' (SCRIBED)

S.W. SECTION CORNER
FD. 30" FIR STUMP, S 20° E, 52.1' (NO MARKS), 1894 B.T.
24" HEMLOCK STUMP, S 59° W, 31.0' (NO MARKS), 1894 B.T.
GROUP OF MAPLES, N 4 1/2° E, 37.6' (NO MARKS), 1894 B.T.
SET 1 1/2" x 36" IRON PIPE & BRASS CAP
12" FIR, N 63° E, 33.5' (SCRIBED)
14" FIR, S 45° E, 39.4' (SCRIBED)
14" FIR, S 73° W, 33.8' (SCRIBED)
15" FIR, N 44° W, 35.3' (SCRIBED)

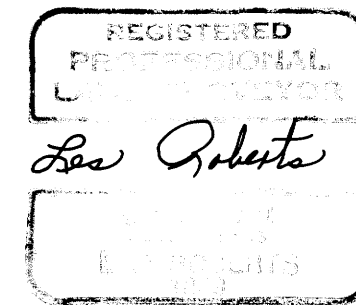
LOCATION OF 1/2" IRON RODS

N.W. COR.			W. 1/4 COR.		
W 26-3	209'	SOUTH	W 26-22	145'	SOUTH
W 26-4	356'	SOUTH	LINE TREE	299'	SOUTH
W 26-5	454'	SOUTH	W 26-23	352'	SOUTH
W 26-6	634'	SOUTH	W 26-25	496'	SOUTH
W 26-8	845'	SOUTH	W 26-26	598'	SOUTH
W 26-9	1066'	SOUTH	W 26-28	786'	SOUTH
W 26-10	1196'	SOUTH	W 26-29	935'	SOUTH
N. 1/16 COR.	1273'	SOUTH	W 26-30	1120'	SOUTH
W 26-13	1453'	SOUTH	S. 1/16 COR.	1280'	SOUTH
W 26-15	1611'	SOUTH	W 26-34	1454'	SOUTH
W 26-16	1885'	SOUTH	W 26-36	1683'	SOUTH
W 26-17	1992'	SOUTH	W 26-38	1947'	SOUTH
W 26-18	2261'	SOUTH	W 26-40	2112'	SOUTH
W 26-19	2385'	SOUTH	W 26-41	2335'	SOUTH
W. 1/4 COR.	2545'	SOUTH	W 26-42	2421'	SOUTH
			S.W. COR.	2560'	SOUTH

SURVEY OF
SECTION 26, T21S, R9W, W.M.
DOUGLAS COUNTY, OREGON
FOR
INTERNATIONAL PAPER COMPANY
BY
ROBERTS SURVEYING INC.
29 WEST 29TH STREET
EUGENE, OREGON 97405
NOVEMBER 30, 1981

LEGEND

- CORNERS FOUND AND USED FOR CONTROL
- CORNERS SET & CAP STAMPED L.S. #1033 11/30/81
- LINE MARKED WITH RED PAINTED BLAZES, 1/2" x 60" IRON RODS AND RED RIBBON
- () DATA OF RECORD
- BASIS OF BEARING, WEST LINE SECTION 26 FROM 1894 SURVEY
- DISTANCE TO BEARING TREES ARE CENTER MEASURE
- ALL BEARING TREES ARE SCRIBED
- SCALE 1" = 400'



NARRATIVE

I, LESLIE ROBERTS, REGISTERED PROFESSIONAL LAND SURVEYOR DO CERTIFY THAT I HAVE CORRECTLY SURVEYED THE WEST LINE OF SECTION 26 IN ACCORDANCE TO THE MANUAL OF INSTRUCTIONS FOR THE SURVEY OF THE PUBLIC LANDS OF THE UNITED STATES. THE N.W. CORNER OF SECTION 26 WAS SET FROM THE EXISTING 1894 S.W. B.T. THE S.W. CORNER OF SECTION 26 WAS SET FROM A STUMP PATTERN IN THE FOLLOWING MANNER. I FOUND A 30" FIR STUMP (NO MARKS VISIBLE), A 24" HEMLOCK STUMP (NO MARKS VISIBLE), AND A GROUP OF MAPLES (NO MARKS VISIBLE) IN THE VICINITY OF THE S.W. CORNER OF SECTION 26. I ASSUMED THESE 3 TREES TO BE ORIGINAL B.T.'S AND USING THE ORIGINAL 1894 CALLS I SET A TEMPORARY HUB FOR THE S.W. CORNER OF SECTION 26. NEXT I CHAIN EAST FROM MY TEMPORARY HUB TO A NORTH-SOUTH RIDGE AND RECORD A DISTANCE OF 820'. THE 1894 SURVEY SHOWS THIS DISTANCE TO BE 812', A DIFFERENCE OF ONLY 8'. I RETURN TO MY TEMPORARY HUB AND CHAIN NORTH TO A EAST-WEST RIDGE AND RECORD A DISTANCE OF 1080'. THE 1894 SURVEY SHOWS THIS DISTANCE TO BE 1089', A DIFFERENCE OF ONLY 9'. THE ABOVE MENTIONED EAST AND NORTH TIES SHOW MY TEMPORARY HUB TO BE VERY NEAR THE ORIGINAL POSITION OF THE S.W. CORNER OF SECTION 26, THEREFORE I CONCLUDE THAT THE ABOVE MENTIONED TREES TO ACTUALLY BE ORIGINAL B.T.'S EVEN THOUGH NO VISIBLE MARKS CAN BE FOUND ON THEM. I REPLACE MY TEMPORARY HUB WITH A 1 1/2" IRON PIPE AND BRASS CAP. THE WEST 1/4 CORNER OF SECTION 26 WAS SET BY SINGLE PROPORTIONATE MEASUREMENT BETWEEN THE N.W. CORNER AND A BLAZED 44" FIR LINE TREE FOUND IN THE FIELD. THE NORTH 1/16 CORNER BETWEEN SECTIONS 26 AND 27 WAS SET HALF-WAY BETWEEN THE N.W. SECTION CORNER AND THE PREVIOUSLY SET WEST 1/4 CORNER OF SAID SECTION 26. THE SOUTH 1/16 CORNER BETWEEN SECTIONS 26 AND 27 WAS SET BY SINGLE PROPORTIONATE MEASUREMENT BETWEEN THE S.W. SECTION CORNER AND THE PREVIOUSLY MENTIONED 44" LINE TREE. A CLOSED MEANDER TRANSIT AND E.D.M. TRAVERSE WAS RUN BETWEEN THE N.W. AND S.W. SECTION CORNERS AND USED FOR CONTROL. OFFSETS WERE COMPUTED FROM THIS MEANDER TRAVERSE TO THE TRUE PROPERTY LINE.

MAP FILE M 89 - 74

MAP FILE M 89 - 74