

SURVEY IN LOTS 2 & 3, BLOCK II, "STARBURST SUBDIVISION"
AND LYING IN NW¼, SECTION 21, T28S, R6W, W.M.

COUNTY SURVEYORS FILE DATA FILED
DO NOT REMOVE FROM OFFICE RECEIVED

DEC 29 1981

COUNTY SURVEYOR
DOUGLAS COUNTY, ORE.

SCALE: 1" = 100'
DECEMBER 1981

FOR: GORDON AVERY ✓
BY: BHW ENGINEERING
& SURVEYING, INC.
1205 SOUTHEAST COURT
ROSEBURG, OREGON 97470

LEGEND:

- SET 5/8" x 30" IRON ROD WITH CAP-MARKED "BHW ENG., INC."
- FOUND 5/8" IRON ROD UNLESS NOTED OTHERWISE

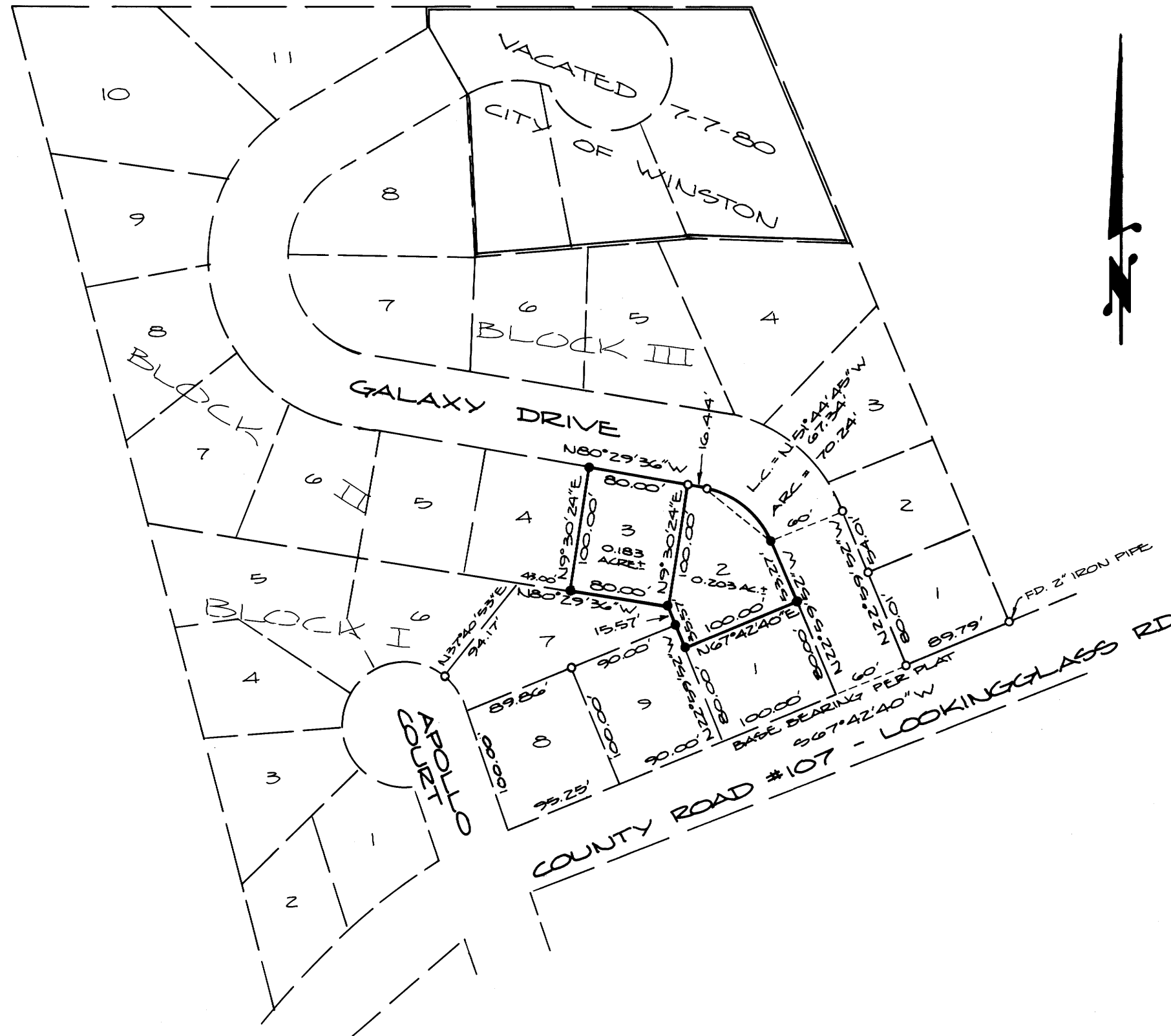
NARRATIVE:

SURVEY TO SET MONUMENTS IN LOTS 2 & 3, BLOCK II, "STARBURST SUBDIVISION". SURVEY BASED ON FOUND MONUMENTS (AS SHOWN) AND CHECKED EXCELLENTLY WITH THE RECORD MEASUREMENTS.

SURVEY CREW: R. QUIMBY AND M. RADCLIFFE.
EQUIPMENT: WILD T-1 THEODOLITE MOUNTED WITH LEITZ RED-1 EDM.

COMPUTATIONS: R. WARE.
DRAFTING: M. RIGGAN AND D. HOPKINS.

MONUMENTS SET PER RECORD MEASUREMENTS AS PORPORTIONING NOT NECESSARY.



REGISTERED
PROFESSIONAL
LAND SURVEYOR

Romano E. Ware

OREGON
NOV. 19 1973
ROMANSO E. WARE
1005

MAP FILE M89-68

MAP FILE M89-68