

SECTION CORNER 32,33,4,5

FOUND: 2 1/4" IRON PIPE WITH LANE CO. BRASS CAP "1975"
53" FIR, N73W, 9.6' - CLOSED FACE
34" FIR, S37E, 10.1' - OPENED, SCRIBE VISIBLE
(THIS B.T. DOES NOT FIT THE CALLS. HOWEVER,
THERE ARE 87 YEARS OF OVERGROWTH, THUS
FIXING THE TIME OF SCRIBING AT THE TIME OF
THE ORIGINAL SURVEY)

SECTION CORNER 33,34,3,4

SET: 2" X 48" IRON PIPE WITH BRASS CAP
11" FIR, N42E, 253.0'
19" ALDER, N50W, 72.5' (BARK SCRIBED)

1/4 CORNER 34 & 3

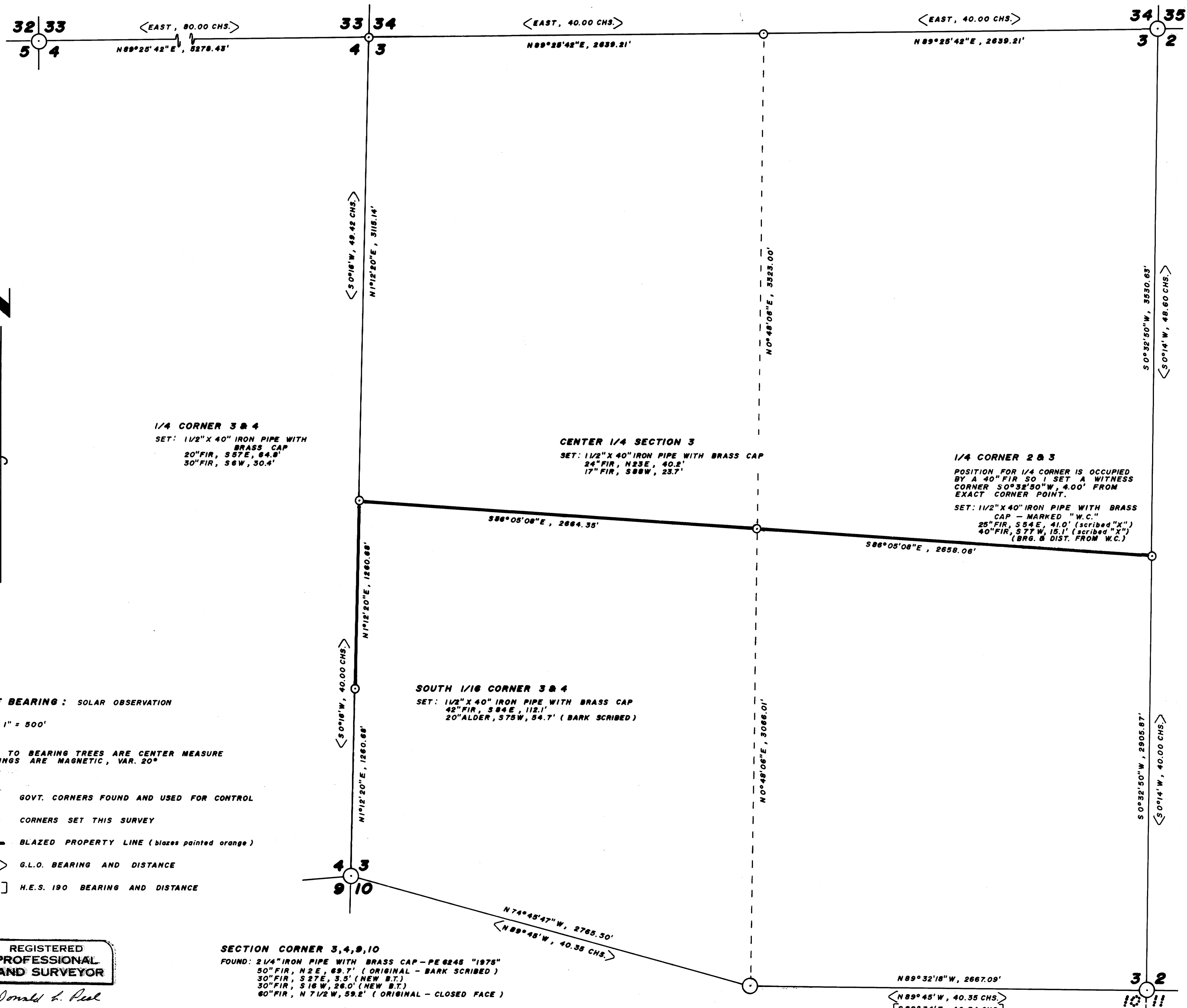
SET: 2" X 42" IRON PIPE WITH BRASS CAP
16" ALDER, N7W, 123.9' (BARK SCRIBED)
36" HEMLOCK, S18W, 301.2'

SECTION CORNER 34,35,2,3

FOUND: 2 1/2" IRON PIPE WITH LANE CO. BRASS CAP "1975"
9" FIR, N82E, 13.5' (CLOSED FACE)
8" ALDER, S74E, 28.1' (BARK SCRIBED)
15" ALDER, S55W, 21.5' (BARK SCRIBED)
11" ALDER, N9W, 28.3' (BARK SCRIBED)

FILED
RECEIVED
DEC 28 1981
COUNTY SURVEYOR
DOUGLAS COUNTY, OREG.

MAP FILE 1289-66



NARRATIVE

THIS SURVEY WAS MADE IN NOVEMBER AND DECEMBER, 1981 BY DONALD L. PEEL OF PEEL BAKER LAND SURVEYING, INC., 1262 LAWRENCE, EUGENE, OREGON. THE PURPOSE OF THIS SURVEY WAS TO LOCATE AND MARK THE 1/2 OF THE 1/2 OF THE WEST LINE AND THE EAST WEST CENTERLINE OF SECTION 3 AND TO REESTABLISH THE NORTHWEST CORNER OF THE EAST, WEST, AND NORTH 1/4 CORNERS OF SECTION 3 AND TO ESTABLISH THE SOUTH 1/16 CORNER 3 & 4. A KERN K13 THEODOLITE AND DM 502 E.D.M. WERE USED TO PERFORM THIS SURVEY. RANDOM TRANSIT TRAVERSES WITH A MINIMUM ERROR OF CLOSURE OF 1/8000' WERE RUN BETWEEN FOUND GOVERNMENT CORNERS AND USED FOR CONTROL. BEARINGS WERE BASED ON A SOLAR OBSERVATION. OFFSETS TO THE TRUE PROPERTY LINE WERE CALCULATED AND USED TO DETERMINE THE POSITION OF THE TRUE LINE. THE TRUE PROPERTY LINE WAS MARKED IN THE FIELD BY BLAZING TREES ON BOTH SIDES OF THE TRUE LINE. THE SECTION CORNER 33,34,3,4 AND THE NORTH, EAST AND WEST 1/4 CORNERS OF SECTION 3 WERE ALL SET BY SINGLE PROPORTION. THE SOUTH 1/16 CORNER 3 & 4 WAS SET AT THE MIDPOINT BETWEEN SECTION CORNER 3,4,9,10 AND 1/4 CORNER 3 & 4. THE CENTER 1/4 CORNER WAS SET AT THE POINT OF INTERSECTION OF THE NORTH-SOUTH AND EAST-WEST CENTERLINES.

ALL CAPS ARE STAMPED ABOVE DATE WITH P.L.S. #752

BASIS OF BEARING: SOLAR OBSERVATION
SCALE: 1" = 500'

DISTANCES TO BEARING TREES ARE CENTER MEASURE AND BEARINGS ARE MAGNETIC, VAR. 20°

- GOVT. CORNERS FOUND AND USED FOR CONTROL
- CORNERS SET THIS SURVEY
- BLAZED PROPERTY LINE (blazes painted orange)
- < > G.L.O. BEARING AND DISTANCE
- [] H.E.S. 190 BEARING AND DISTANCE

REGISTERED PROFESSIONAL LAND SURVEYOR

Donald L. Peel

OREGON JULY 9, 1966 DONALD L. PEEL 752

SURVEY OF SECTION 3, T20S, R11W, W.M. LANE & DOUGLAS COUNTIES, OREGON

FOR DAVIDSON INDUSTRIES INC. BY PEEL BAKER LAND SURVEYING, INC. DECEMBER 11, 1981

1262 LAWRENCE EUGENE, OREGON 97401

COUNTY SURVEYORS FILE DATA DO NOT REMOVE FROM OFFICE

MAP FILE 1289-66