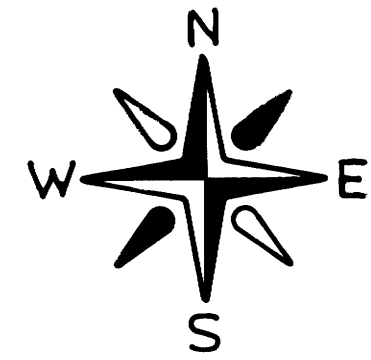
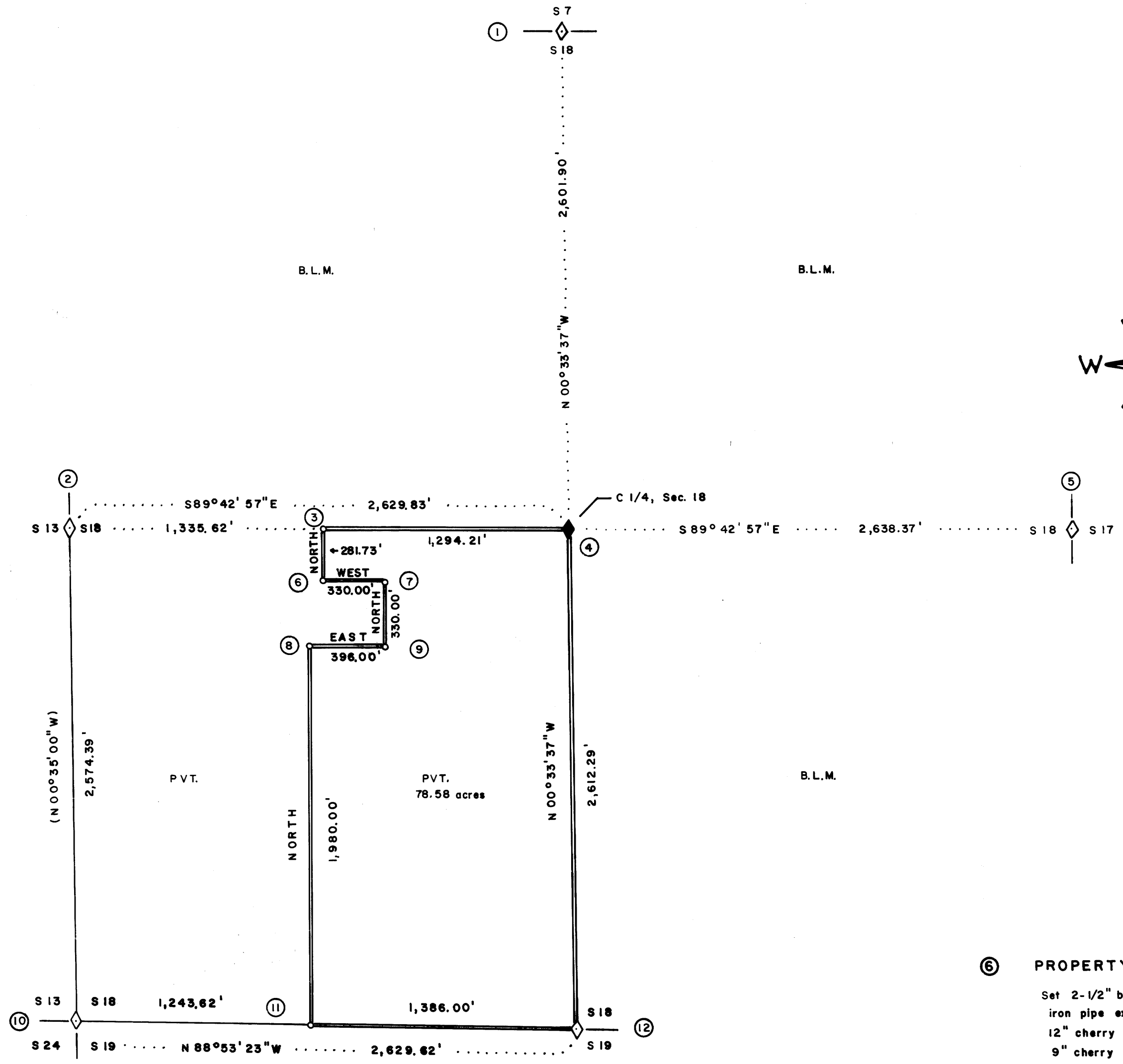


SURVEY OF
SECTION 18, T.23S., R.9W., W.M.
DOUGLAS COUNTY, OREGON

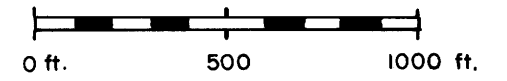
BY
CHAMPION INTERNATIONAL CORPORATION
SEPTEMBER - NOVEMBER, 1981
RGG

FILED
JK
1789-63



LEGEND

- ◇ corner found and used for control
- ◆ C1/4 Section 18 set this survey
- property corner set this survey
- ==== property line posted



SURVEY NARRATIVE

The following describes a survey conducted in Section 18, T.23S., R.9W., W.M., during the months of September - November, 1981.

All corners used for control were B.L.M. brass caps in good condition. Closed transit traverses were run for control with a minimum acceptable error of closure being one part in 4000.

Basis of bearing was the bearing established between the S.W. Section Corner of Section 18 and the W1/4 Corner of Section 18, by a 1967 B.L.M. dependent resurvey of a line common to T.23S., R.10W., and T.23S., R.9W..

The C1/4 of Section 18 was set at the intersection of the center lines between opposing 1/4 corners. The remaining property corners were set according to the property description in Bargain and Sale Deed number 304044, Volume 311, page 208, on file in the Douglas County Courthouse. Property corner number 3, was set at the intersection of the line from the W1/4, Section 18 to the C1/4, Section 18, and the North property line called for in the deed description.

Offsets to true line were calculated, and property lines were posted with steel fence posts at intervals of 200 feet or less.

I, Robert B. Ward, a Registered Professional Land Surveyor in the State of Oregon, hereby certify that this plat and the notes hereon are a correct and accurate representation of a survey I performed during the months September-November, 1981, in accordance with the statutes of the State of Oregon.

ROBERT B. WARD
OREGON P.L.S. 1091
P.O. Box 37
Mapleton, Oregon 97453

① 1/4 CORNER S18/S7
Found 2-1/2" B.L.M. brass cap on a 2-1/2" iron pipe set in 1969.
13" hemlock bears N52°W, 18.8 ft. (1969)
Scribed 1/4 S7 BT
19" hemlock bears S13-1/2°E, 23.7 ft. (1969)
Scribed 1/4 S18 BT

② 1/4 CORNER S13/S18
Found 2-1/2" B.L.M. brass cap on a 2-1/2" iron pipe set in 1967.
28" hemlock bears N29-1/2°W, 36.3 ft. (1967)
Scribing not visible - closed face
26" fir bears N43°E, 44.2 ft. (1967)
Scribing not visible - closed face
From this point, an unrecorded 1" iron pipe bears N11°08'11"W, 42.1 ft..
From this same point, a 46" fir mentioned as 43" in diameter in the 1967 B.L.M. Resurvey notes of a portion of the East boundary, T.23 S., R.10 W., W.M., bears N73°18'W, 67.5 ft.. Visible scribing faces S40°E. A 2"x2" wooden hub described in the B.L.M. notes, was not found.

③ PROPERTY CORNER
Set 2-1/2" brass cap on a 2-1/2" x 30" iron pipe extending 5" above ground.
18" maple (triple stem) bears S30°W, 25.0 ft. (1981)
32" maple (double stem) bears N42°W, 25.5 ft. (1981)
Both scribed BT

④ C1/4, S18
Set 2-1/2" brass cap on a 2-1/2" x 30" iron pipe extending 6" above ground.
14" fir bears S60°W, 11.8 ft. (1981)
11" fir bears N08°E, 6.8 ft. (1981)
Both scribed C1/4 S18 BT

⑤ 1/4 CORNER S18/S17
Found 2-1/2" brass cap on a 2-1/2" iron pipe set in 1969.
20" hemlock bears N84°E, 31.4 ft. (1969)
Scribed 1/4 S17 BT
15" hemlock bears S65°W, 29.7 ft. (1969)
Scribed 1/4 S18 BT

⑥ PROPERTY CORNER
Set 2-1/2" brass cap on a 2-1/2" x 30" iron pipe extending 5" above ground.
12" cherry bears N37°W, 18.9 ft. (1981)
9" cherry bears N41°E, 26.8 ft. (1981)
Both scribed BT

⑦ PROPERTY CORNER
Set 2-1/2" brass cap on a 2-1/2" x 30" iron pipe extending 4" above ground.
14" maple bears S60°W, 26.7 ft. (1981)
14" maple bears S42°E, 25.0 ft. (1981)
Both scribed BT

⑧ PROPERTY CORNER
Set 2-1/2" brass cap on a 2-1/2" x 30" iron pipe extending 5" above ground.
7" maple (cluster) bears N82°W, 2.4 ft. (1981)
Scribed BT
22" alder bears N48°E, 19.9 ft. (1981)
Scribed BT in bark

⑨ PROPERTY CORNER
Set 2-1/2" brass cap on a 2-1/2" x 30" iron pipe extending 4" above ground.
13" fir bears S48-1/2°W, 13.3 ft. (1981)
12" fir bears S48°E, 25.8 ft. (1981)
Both scribed BT

⑩ SECTION CORNER S18, S19, S24, S13
Found 2-1/2" B.L.M. brass cap on a 2-1/2" iron pipe set in 1967.
8" myrtle bears N69°E, 223.7 ft. (1967)
Scribed T23S R9W S18 BT
8" dead, down ash (record, maple) bears N27°W, 427.7 ft.. Scribing not found. (1967)
11" ash bears N02°E, 81.3 ft. (1981)
Scribed T23S R9W S18 BT

⑪ PROPERTY CORNER
Set 2-1/2" brass cap on a 2-1/2" x 30" iron pipe extending 6" above ground.
12" fir bears S13°E, 4.3 ft. (1981)
10" fir bears N54°E, 17.7 ft. (1981)
Both scribed BT

⑫ 1/4 CORNER S18/S19
Found 2-1/2" B.L.M. brass cap on a 2-1/2" iron pipe set in 1969. A rotted wood post was found lying on ground beside cap.
45" fir stump bears N20°E, 27.5 ft. (original)
45" fir stump bears S64°E (record, S70°E), 16.5 ft. (original)
Scribing not found on either BT
11" fir bears S14-1/2°E, 18.9 ft. (1969)
13" fir bears N9-1/2°W, 17.6 ft. (1969)
Scribing not visible - closed faces



1789-63