

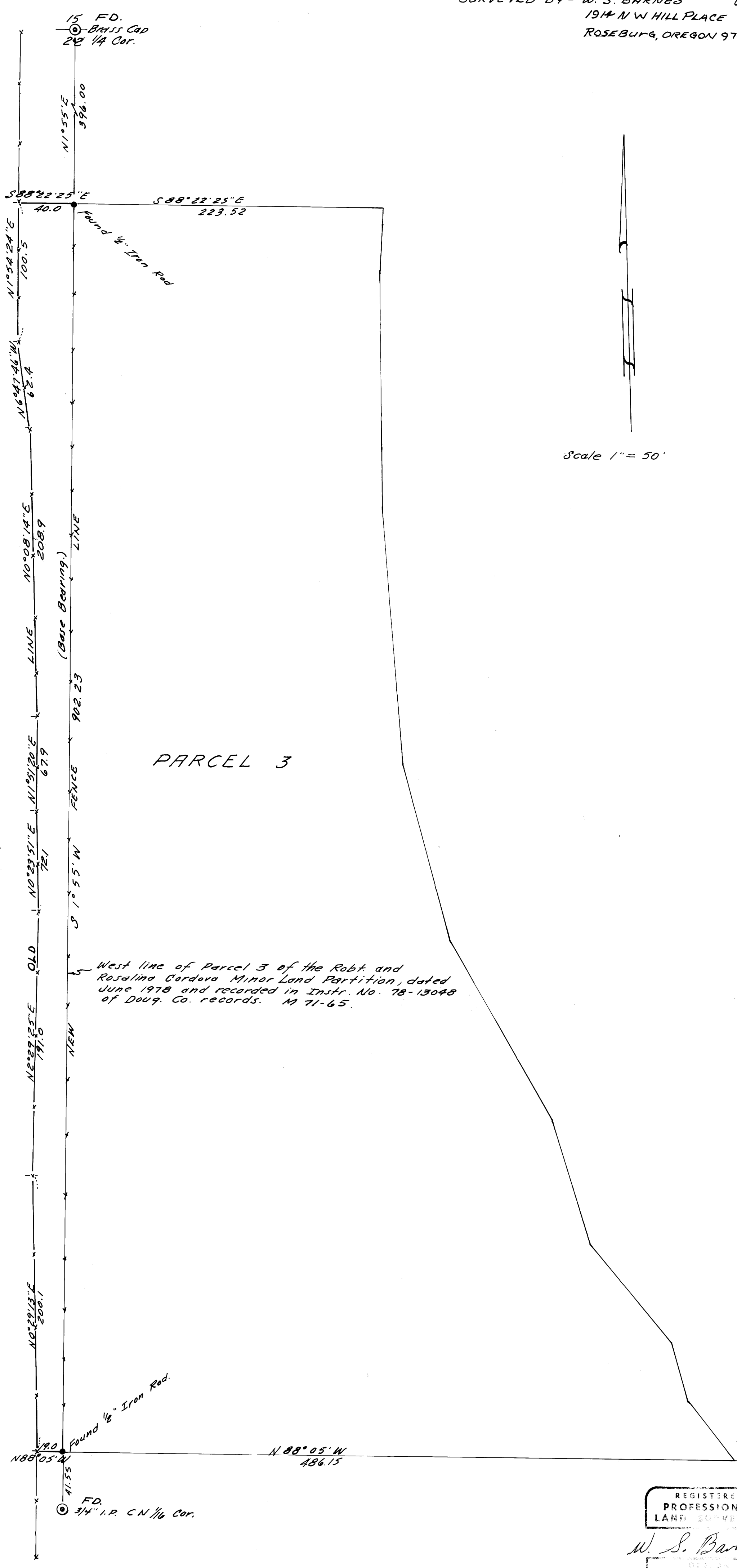
09-534

COUNTY SURVEYORS FILE DATA
DO NOT REMOVE FROM OFFICE

FENCE LINE SURVEY
IN NE 1/4 SEC. 22, T29S, R5W. W.M.
SURVEYED FOR - ROBERT CORDOVA

Nov. 15, 1981
SURVEYED BY - W. S. BARNES
1914 NW HILL PLACE
ROSEBURG, OREGON 97470

FILED 7
RECORDED 8
COUNTY CLERK



Scale 1" = 50'



REGISTERED
PROFESSIONAL
LAND SURVEYOR

W. S. Barnes

SECTION
SUPERVISOR
WILLIAM S. BARNES
1981