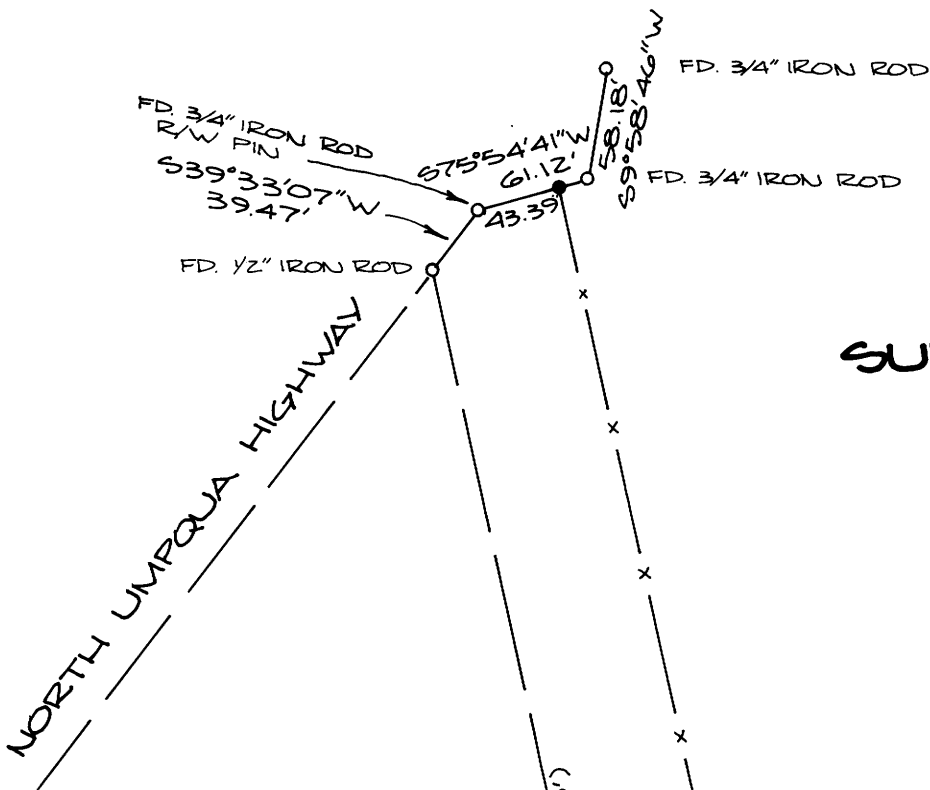


COUNTY SURVEYORS FILE UNIT
DO NOT REMOVE FROM OFFICE

FILED ✓
RECEIVED

DEC 8 1981

COUNTY SURVEYOR
DOUGLAS COUNTY, OREGON



SURVEY IN SE 1/4, SECTION 29, T26S, R4W, W.M.

FOR: GEORGIA STILES
BY: BHW ENGINEERING
& SURVEYING, INC.
1205 S.E. COURT
ROSEBURG, OREGON

REGISTERED
PROFESSIONAL
LAND SURVEYOR

Romano E. Ware

OREGON
NOV. 16, 1973
ROMANSO E. WARE
1005

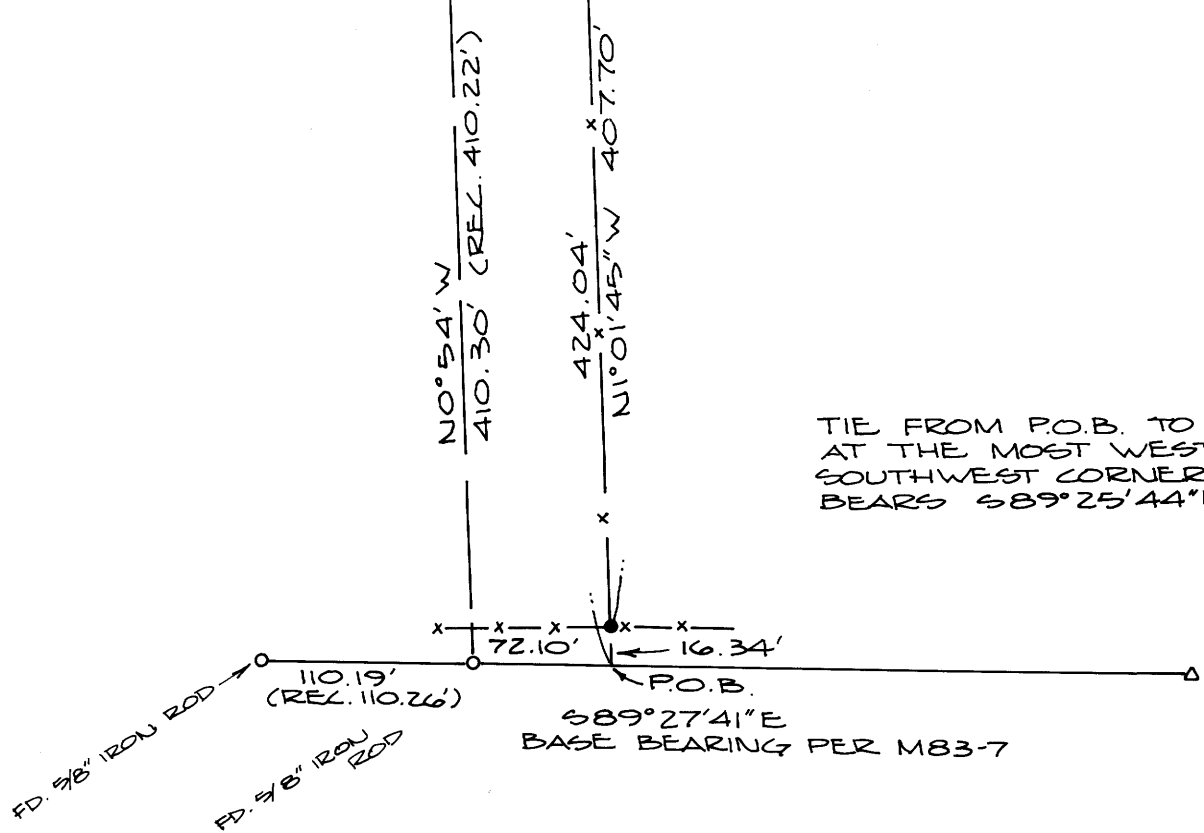
SCALE: 1" = 100'
NOVEMBER 1981

LEGEND:

- FENCE POST
- FOUND MONUMENT AS NOTED
- △ NO MONUMENT FOUND



2.14 ACRES



NARRATIVE:

SURVEY FOR THE PURPOSE OF LOCATING A FENCELINE FOR DESCRIPTION. FIELD CREW: R. QUIMBY, M. RADCLIFFE. EQUIPMENT: WILD T-1 MOUNTED WITH LEITZ RED-1. OFFICE COMPUTATIONS: R. WARE. DRAFTING: D. HOPKINS.

TIE FROM P.O.B. TO A BRASS CAP AT THE MOST WESTERLY SOUTHWEST CORNER OF D.L.C. #49 BEARS 589°25'44"E 5919.80 FEET.