

SURVEY LOTS 31 & 32, BLOCK 24,
 "AMENDED PLAT TOWNSITE OF SUTHERLIN"
 LYING IN SE 1/4, SECTION 17, T25S, R5W, W.M.

COUNTY SURVEYORS FILE DATA
 DO NOT REMOVE FROM OFFICE

FILED *✓*
 RECEIVED *✓*

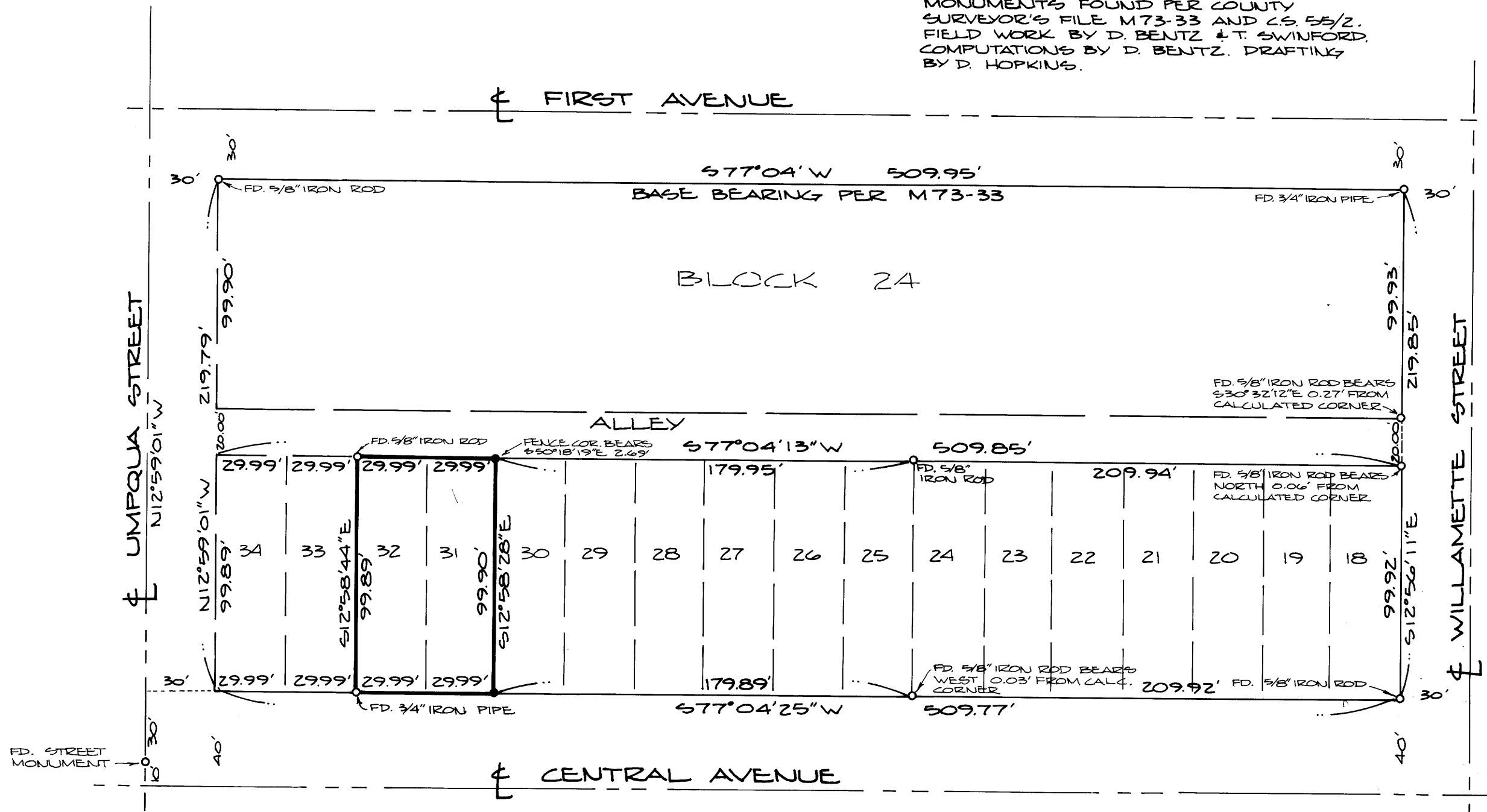
NOV 16 1981

COUNTY SURVEYOR
 DOUGLAS COUNTY, ORE.

FOR: ERMA SAMARRON
 BY: BHW ENGINEERING & SURVEYING
 1205 S.E. COURT - ROSEBURG, ORE.

NARRATIVE:

SURVEY TO MONUMENT EAST LINE
 OF LOT 31, BLOCK 24, "AMENDED PLAT
 TOWNSITE OF SUTHERLIN" TO ESTABLISH
 RELATIVE LOCATION OF FENCE LINE.
 MONUMENTS FOUND PER COUNTY
 SURVEYOR'S FILE M73-33 AND C.S. 55/2.
 FIELD WORK BY D. BENTZ & T. SWINFORD.
 COMPUTATIONS BY D. BENTZ. DRAFTING
 BY D. HOPKINS.



LEGEND:

- FOUND MONUMENT AS NOTED
- SET 5/8" & 30" IRON ROD

SCALE: 1" = 50'
 OCTOBER 1981

REGISTERED
 PROFESSIONAL
 LAND SURVEYOR

Donald A. Bentz
 OREGON
 JULY 12, 1968
 DONALD A. BENTZ
 839

MAP FILE M89-42

MAP FILE M89-42