

**SURVEY - LOT 7 "HI-WAY HOMESITES"**  
 LYING IN NE 1/4, SECTION 19, T25S, R5W, W.M.

**COUNTY SURVEYORS FILE DATA**  
**DO NOT REMOVE FROM OFFICE**

FILED ✓  
 RECEIVED 22

NOV 13 1981

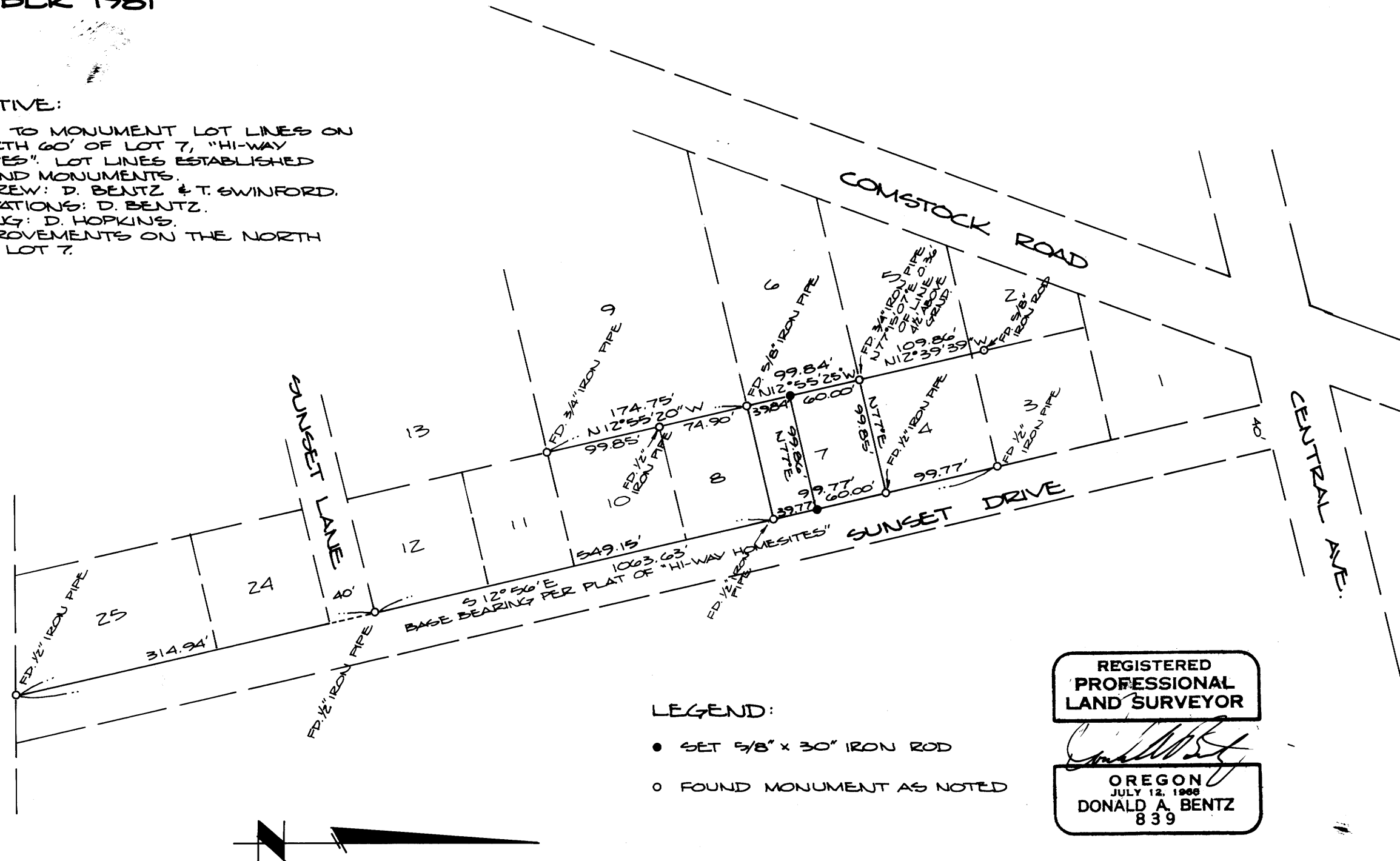
COUNTY SURVEYOR  
 DOUGLAS COUNTY, ORE.

FOR: ERNIE ORTON  
 BY: BHW ENGINEERING & SURVEYING, INC.  
 1205 SE COURT - ROSEBURG, OREGON

SCALE: 1" = 100'  
 OCTOBER 1981

**NARRATIVE:**

SURVEY TO MONUMENT LOT LINES ON THE NORTH 60' OF LOT 7, "HI-WAY HOMESITES". LOT LINES ESTABLISHED PER FOUND MONUMENTS.  
 FIELD CREW: D. BENTZ & T. SWINFORD.  
 COMPUTATIONS: D. BENTZ.  
 DRAFTING: D. HOPKINS.  
 NO IMPROVEMENTS ON THE NORTH 60' OF LOT 7.



**LEGEND:**

- SET 5/8" X 30" IRON ROD
- FOUND MONUMENT AS NOTED

REGISTERED  
 PROFESSIONAL  
 LAND SURVEYOR

*Donald A. Bentz*  
 OREGON  
 JULY 12, 1966  
 DONALD A. BENTZ  
 839

MAP FILE M89-4

MAP FILE M89-4