

FILED
RECEIVED
JAN 4 1982
COUNTY SURVEYOR
DOUGLAS COUNTY, ORE.



SURVEY NARRATIVE TO COMPLY WITH PARAGRAPH 209.250
OREGON REVISED STATUTES

BASIS OF BEARING
SOLAR OBSERVATION

PURPOSE

TO CORRECT THE 1972 OREGON STATE BOARD OF FORESTRY SURVEY OF
SECTION 24, TOWNSHIP 23 SOUTH, RANGE 10 WEST, WILLAMETTE MERIDIAN.

LEGEND

- OSBF P/C = OREGON STATE BOARD OF FORESTRY 1 1/2" x 36" GALVANIZED IRON PIPE WITH 3" BRONZE CAP
- WPCP = 4" x 4" x 72" WHITE PAINTED CEDAR POST
- YMLP = YELLOW METAL LOCATION POSTER
- IG = IN GROUND
- BT(S) = BEARING TREE (OR TREES)
- [] = ORIGINAL BEARING(S) AND/OR DISTANCE(S)
- () = RECORDED BEARING(S) AND/OR DISTANCE(S) (OSBF)
- RS = REGISTERED SURVEYOR 1101

FOR DETAILED REPORT ON FOUND CORNERS SEE COUNTY RECORD.
NEW CORNERS AND ACCESSORIES MARKED ACCORDING TO "MANUAL OF INSTRUCTIONS FOR THE SURVEY OF THE PUBLIC LANDS OF THE U.S."
DISTANCE MEASURED TO BT FACE.
ESTABLISHED = NEW CORNER SET
REESTABLISHED = LOST GLO, CADASTRAL OR OTHER CORNER RESET BY PROPORTIONATE MEASUREMENT, OR AS NOTED.
ROADS AND CREEK ARE APPROXIMATE LOCATION

PROCEDURE

A RANDOM TRAVERSE WITH A PRECISION RATIO OF 1 TO 50,000 WAS USED TO CONNECT THE CONTROLLING CORNERS GOVERNING THE CORRECTION SURVEY OF SECTION 24, TOWNSHIP 23 SOUTH, RANGE 10 WEST, WILLAMETTE MERIDIAN. A SEARCH WAS MADE FOR THE ONE QUARTER CORNER COMMON TO SECTIONS 24 AND 25 RESTORED BY JAMES W. BYRON, DEPUTY COUNTY SURVEYOR, RECORDED IN COUNTY SURVEYORS FILE NO. 49/60. IF I FIND THAT LAKE CREEK, DUE TO EROSION ACTION, HAS OBLITERATED THE CORNER POINT. I FIND THE 27" MYRTLE BEARING TREE N02°W 58.0 FEET OUT OF PLACE. I AM UNABLE TO LOCATE ITS TRUE POSITION. THE 28" MYRTLE BEARING TREE N58°45'W 37.8 FEET IS ALSO OUT OF PLACE. I LOCATE ITS TRUE POSITION AND SET A 5/8" x 30" IRON ROD 28" IN GROUND IN THE CENTER OF THE ROOT CROWN. A TIE WAS MADE IN THE PRELIMINARY TRAVERSE TO THE CENTER OF THE ROOT CROWN AND THE POSITION OF THE ONE QUARTER CORNER COMMON TO SECTIONS 24 AND 25 WAS CALCULATED USING RECORD BEARING AND DISTANCE. I FIND THE 1972 OSBF WITNESS CORNER FOR THE ONE QUARTER CORNER COMMON TO SECTIONS 24 AND 25 AND ONE MYRTLE BEARING TREE S47°30'E 37.3 FEET TO THE FACE (RECORD 37.6 FEET TO FACE). THE SLOPE DISTANCE MEASURED FROM THE FACE TO THE WITNESS CORNER IS 37.6 FEET. I ESTABLISH THE CENTER ONE QUARTER CORNER FOR SECTION 24 BY MOVING THE 1972 OSBF P/C S10°11'11"W 1.65 FEET AND REPLACE IT WITH A 5/8" x 30" IRON ROD 28 INCHES IN GROUND. I USED BOTH 1972 BEARING TREES TO WITNESS THE CORRECTED CORNER LOCATION. I REESTABLISH THE ONE QUARTER CORNER COMMON TO SECTIONS 19 AND 24 BY MOVING THE 1972 OSBF P/C S80°10'58" E 23.71 FEET AND REPLACE IT WITH A 5/8" x 30" IRON ROD 28 INCHES IN GROUND. I SCRIBED TWO NEW BEARING TREES WITNESSING THE CORRECTED CORNER LOCATION AND OBLITERATE THE SCRIBES ON BOTH 1972 BEARING TREES. THIS SECTION WAS SURVEYED USING THE PROCEDURES AS OUTLINED IN THE "MANUAL OF SURVEYING INSTRUCTIONS FOR THE SURVEY OF THE PUBLIC LANDS OF THE U.S." BEARINGS TO CORNER ACCESSORIES FOR REESTABLISHED AND ESTABLISHED CORNERS WERE TAKEN WITH A STAFF COMPASS SET AT 20°30' EAST MAGNETIC DECLINATION.

**COUNTY SURVEYORS FILE DATA
DO NOT REMOVE FROM OFFICE**

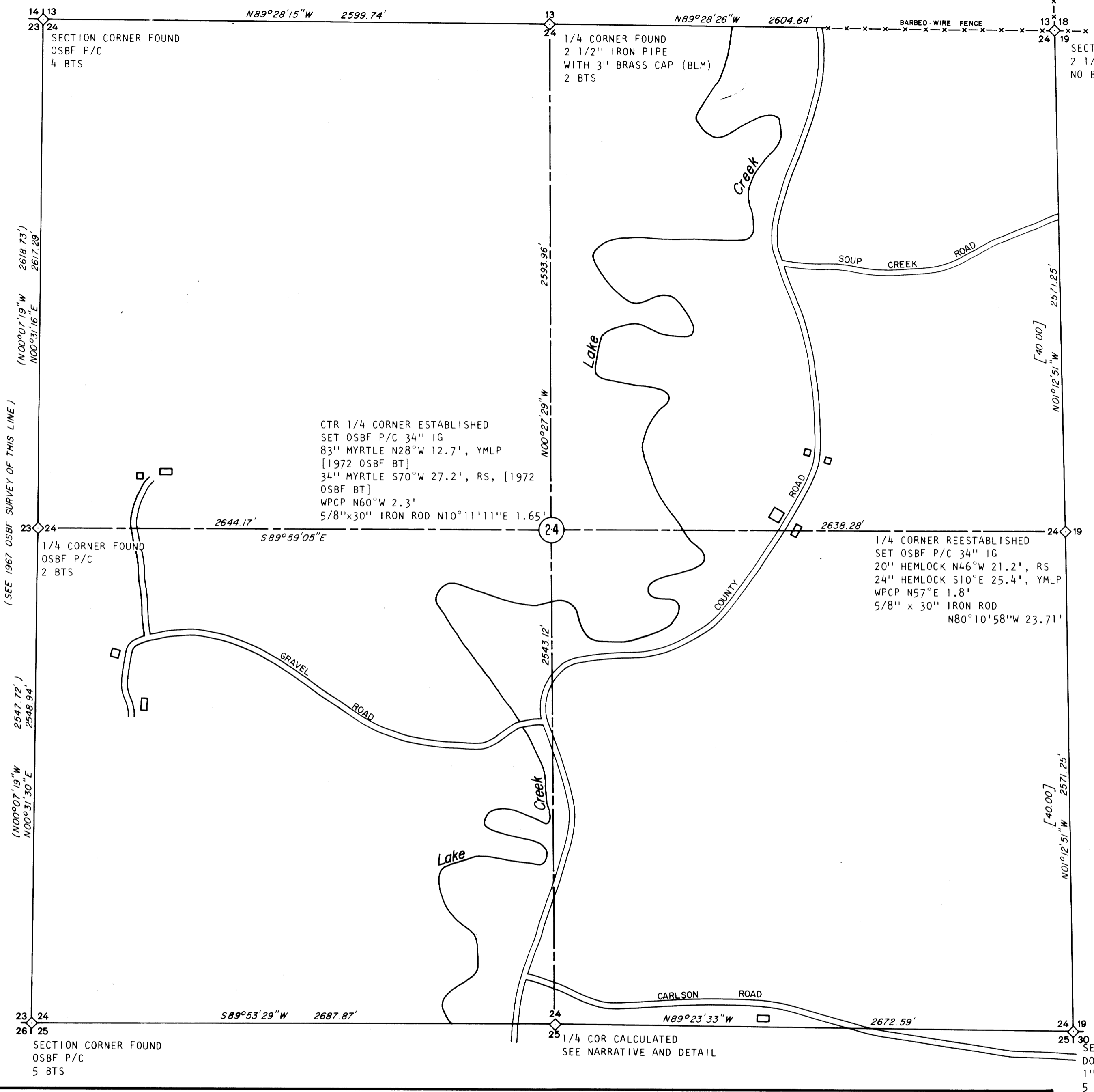
SURVEYED BY:

**REGISTERED
PROFESSIONAL
LAND SURVEYOR**
Lloyd D. Smith
**OREGON
LLOYD D SMITH
1101**

CORRECTION SURVEY FOR:
STATE OF OREGON - DEPARTMENT OF FORESTRY
SECTION 24, T.23S., R.10W., W.M.

DOUGLAS COUNTY, OREGON
THEODOLITE AND EDM SURVEY BY: J.McINTOSH,
B.PETERSON, A.KOREIVA, AND T.VAN VLEET
DRAWN BY: T. VAN VLEET
SEPTEMBER 29, 1981
SCALE: 1" = 400'

LLOYD D. SMITH
300 5TH STREET, BAY PARK
COOS BAY, OREGON



CTR 1/4 CORNER ESTABLISHED
SET OSBF P/C 34" IG
83" MYRTLE N28°W 12.7', YMLP
[1972 OSBF BT]
34" MYRTLE S70°W 27.2', RS, [1972
OSBF BT]
WPCP N60°W 2.3'
5/8" x 30" IRON ROD N10°11'11"E 1.65'

1/4 CORNER REESTABLISHED
SET OSBF P/C 34" IG
20" HEMLOCK N46°W 21.2', RS
24" HEMLOCK S10°E 25.4', YMLP
WPCP N57°E 1.8'
5/8" x 30" IRON ROD
N80°10'58"W 23.71'

DETAIL SCALE 1" = 20'

